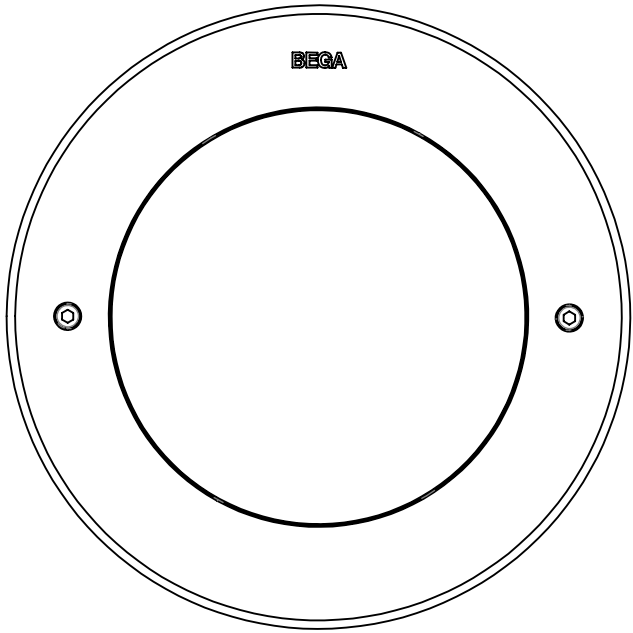
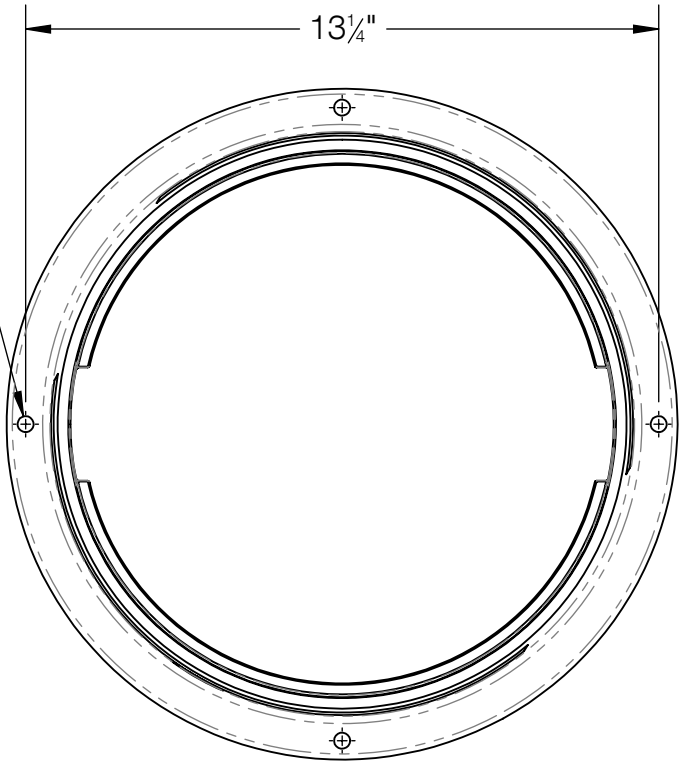


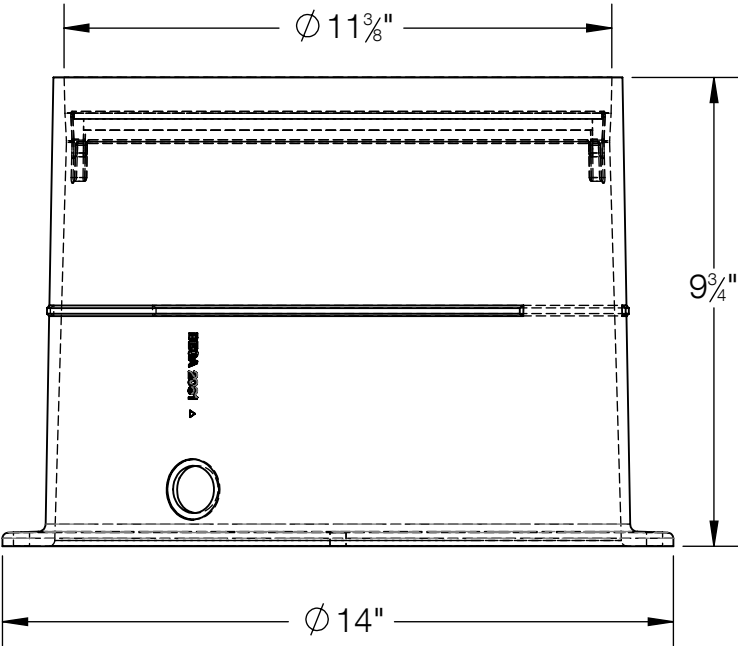
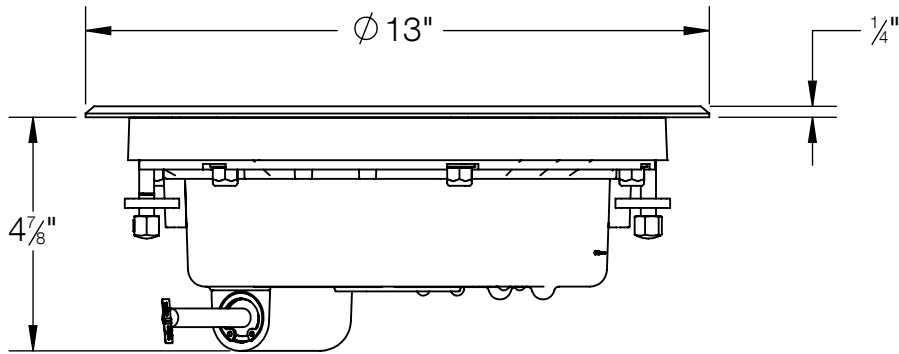
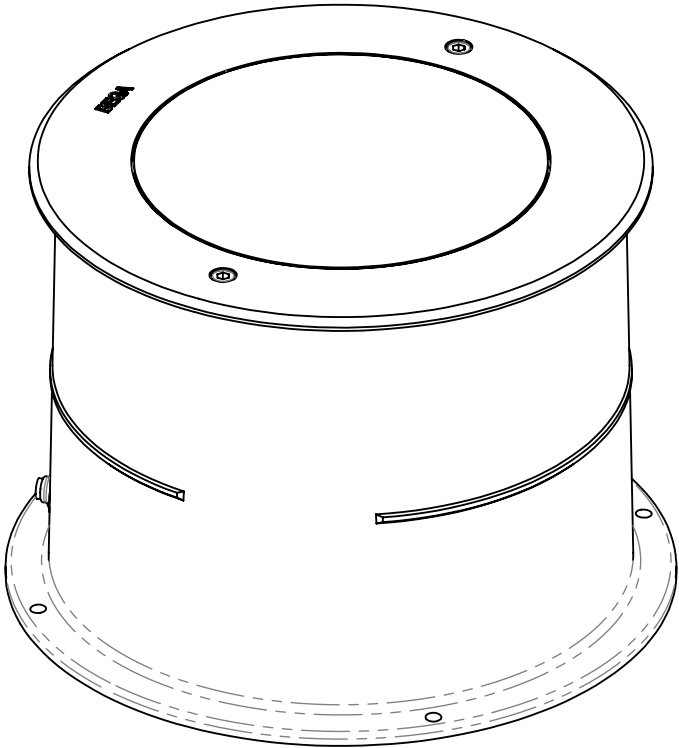
REV	CHANGED BY	DESCRIPTION	DATE



$\phi \frac{3}{8}$ " (4X)  
MOUNTING HOLES



OUTER HOUSING DETAIL



- NOTE:
- PROPER DRAINAGE REQUIRED BELOW THE OUTER HOUSING
  - DRIVE OVER APPLICATION REQUIRES FOUNDATION TO ACCOMDATE LUMINAIRE MAX LOAD OF (11,000lbs / (5,000KG)

BEGA				
1000 BEGA Way, Carpinteria, California 93013			P (805) 684-0533 - <a href="http://www.bega-us.com">www.bega-us.com</a>	
APPROVED: _____		DATE: _____		DESCRIPTION: IN-GRADE LUMINAIRE - LOCATION LUMINAIRE
TYPE: _____				
PROPRIETARY AND CONFIDENTIAL THE INFORMATION CONTAINED IN THIS DRAWING IS THE SOLE PROPERTY OF BEGA NORTH AMERICA, INC. ANY REPRODUCTION IN PART OR AS A WHOLE WITHOUT THE WRITTEN PERMISSION OF BEGA NORTH AMERICA, INC. IS PROHIBITED.		SIZE B	PART NO. 84 290	REV -
NOT TO SCALE		06/17/2021	SHEET 1 OF 1	