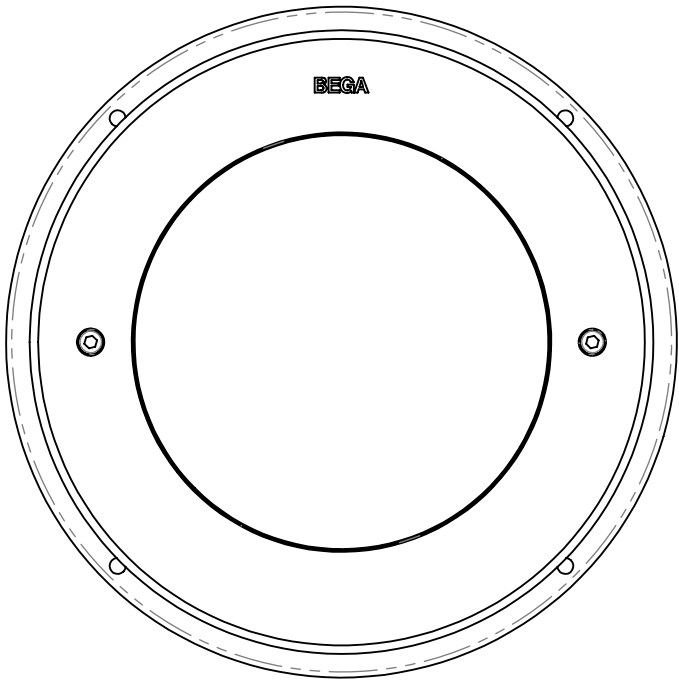
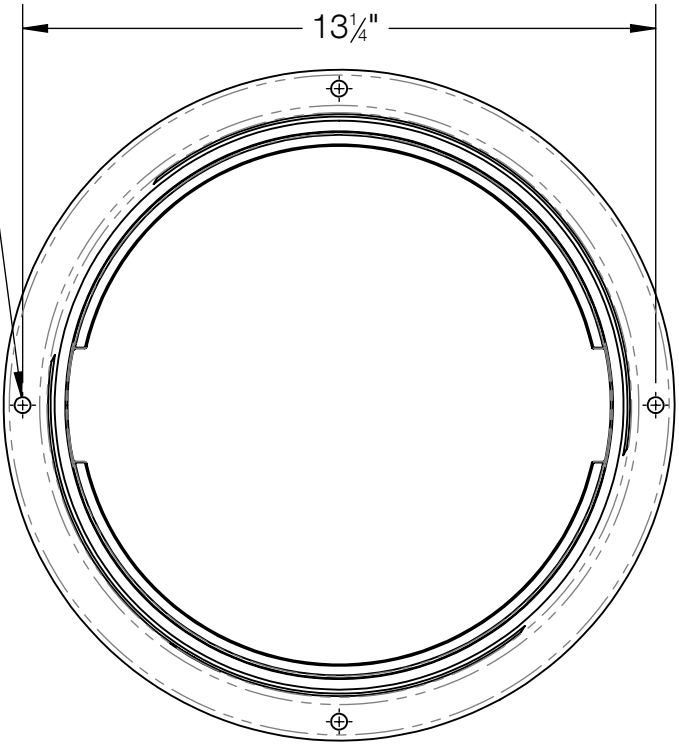


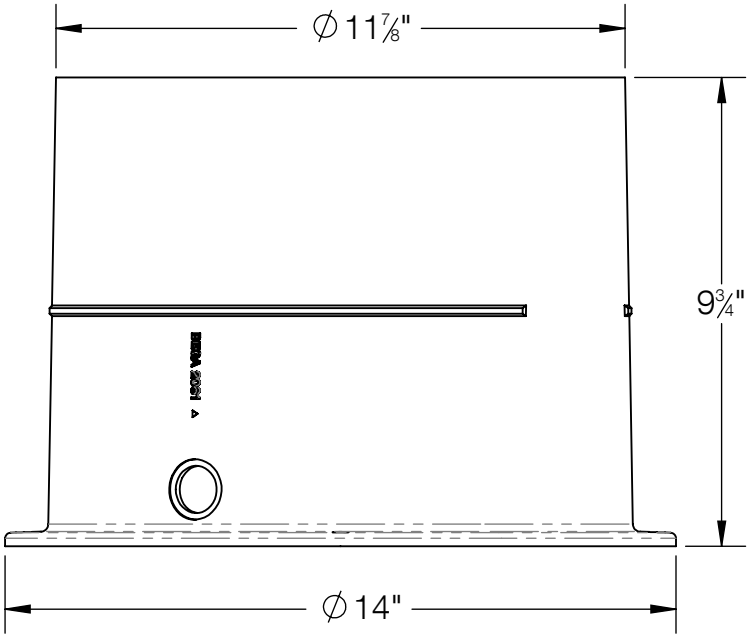
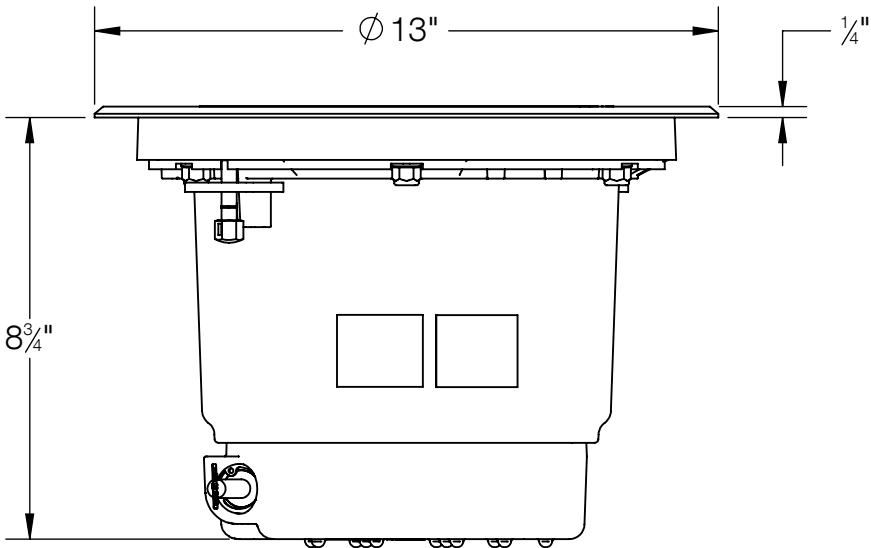
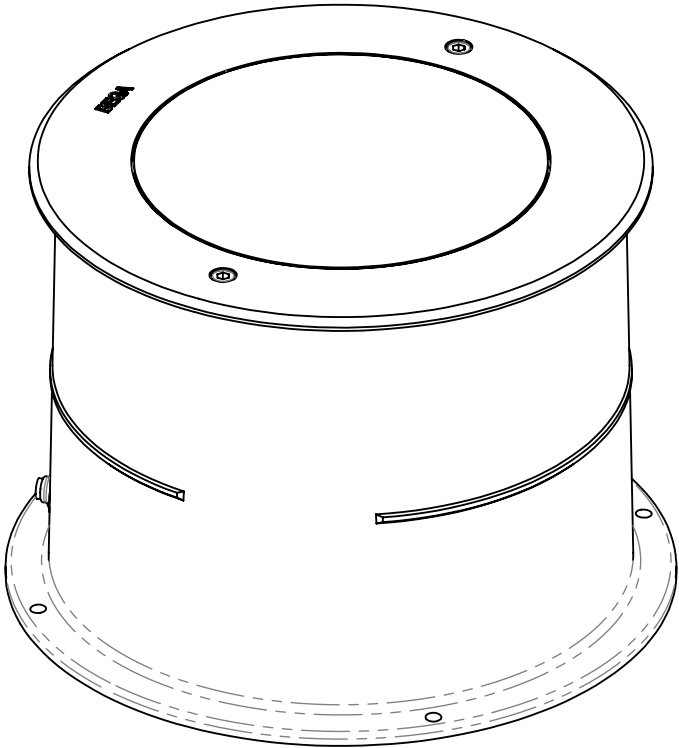
REV	CHANGED BY	DESCRIPTION	DATE



Ø 3/8" (4X)
MOUNTING HOLES



OUTER HOUSING DETAIL



- NOTE:
- PROPER DRAINAGE REQUIRED BELOW THE OUTER HOUSING
 - DRIVE OVER APPLICATION REQUIRES FOUNDATION TO ACCOMDATE LUMINAIRE MAX LOAD OF (11,000lbs / (5,000KG))

BEGA				
1000 BEGA Way, Carpinteria, California 93013			P (805) 684-0533 - www.bega-us.com	
APPROVED: _____		DATE: _____		DESCRIPTION: IN-GRADE LUMINAIRE - SYMMETRIC
TYPE: _____		SIZE B		REV -
PROPRIETARY AND CONFIDENTIAL THE INFORMATION CONTAINED IN THIS DRAWING IS THE SOLE PROPERTY OF BEGA NORTH AMERICA, INC. ANY REPRODUCTION IN PART OR AS A WHOLE WITHOUT THE WRITTEN PERMISSION OF BEGA NORTH AMERICA, INC. IS PROHIBITED.		PART NO. 84 297		NOT TO SCALE
		06/17/2021		SHEET 1 OF 1