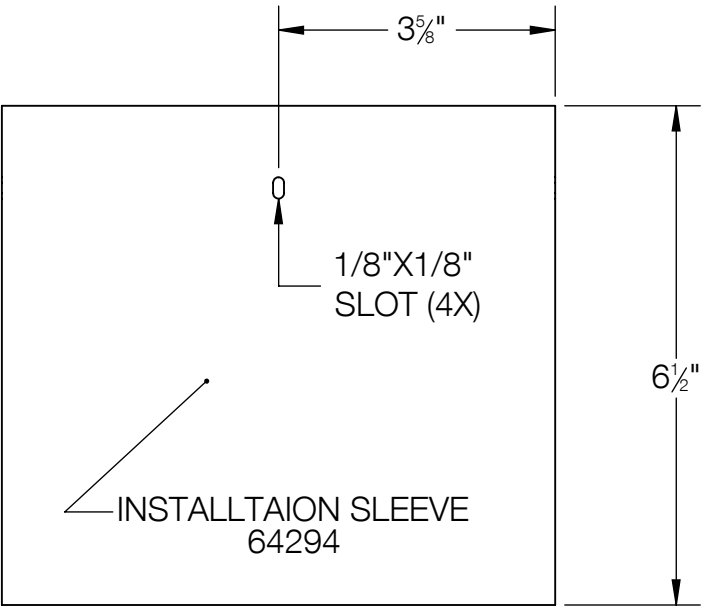
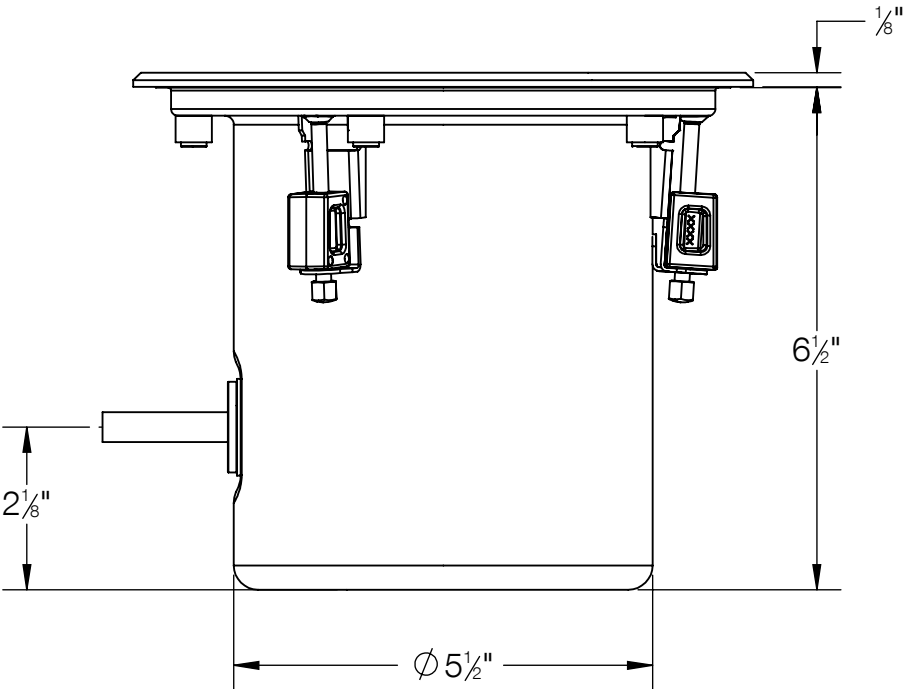
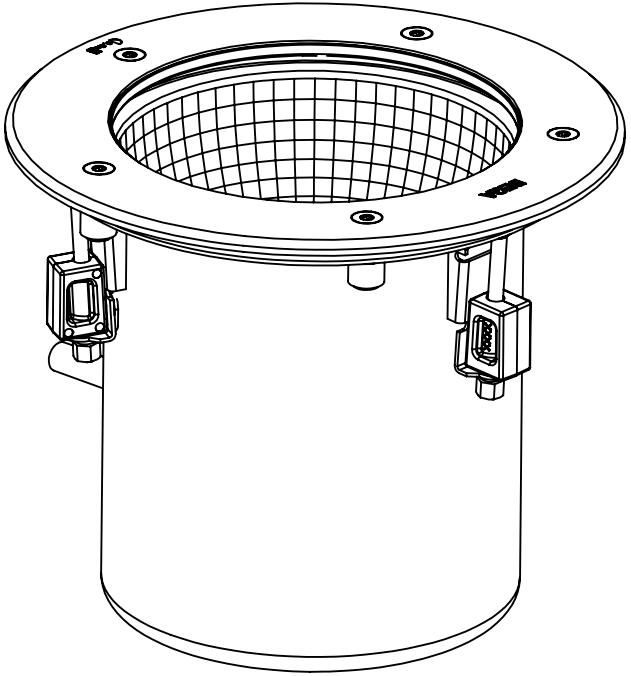
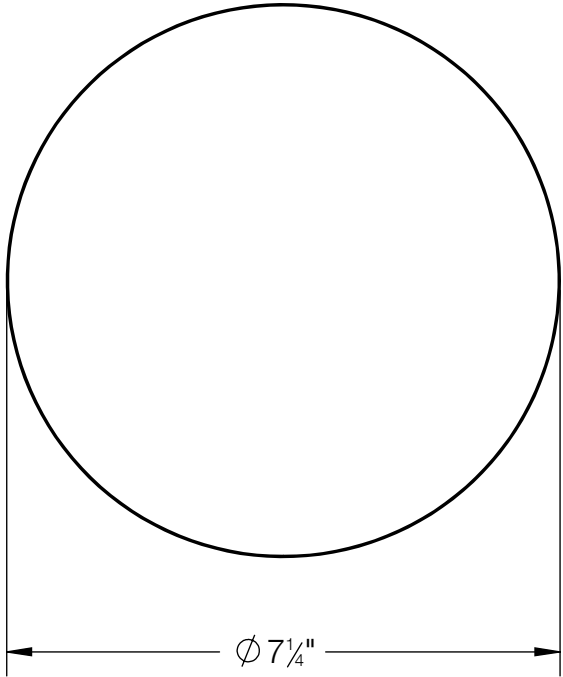
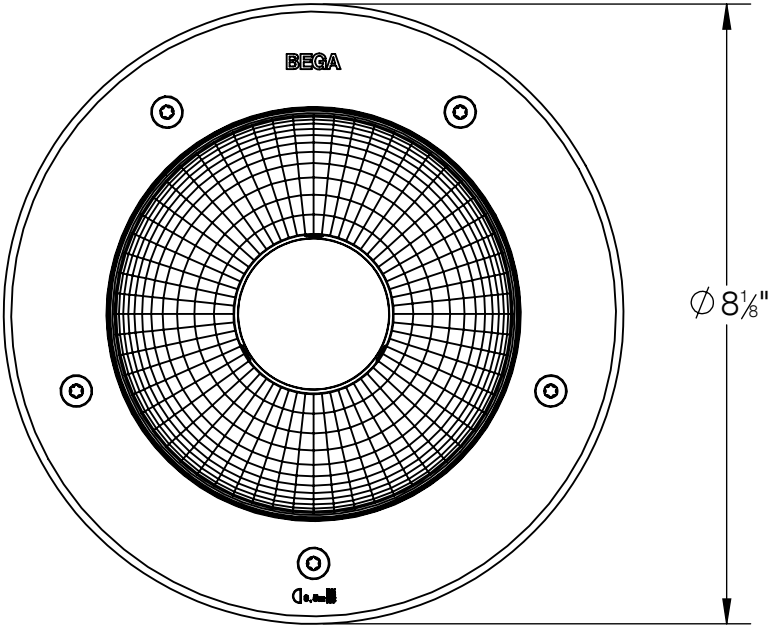


REV	CHANGED BY	DESCRIPTION	DATE



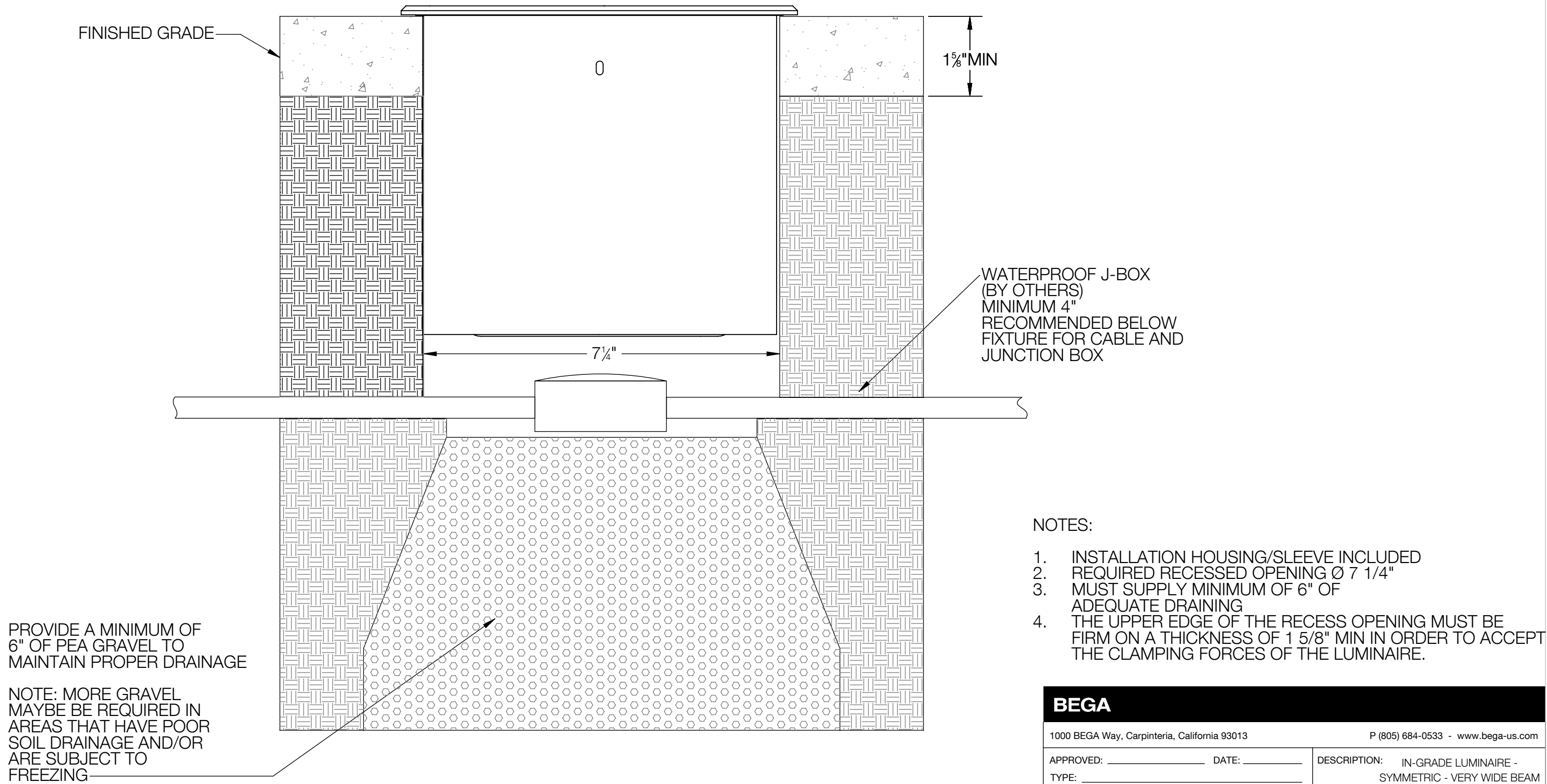
BEGA

1000 BEGA Way, Carpinteria, California 93013 P (805) 684-0533 - www.bega-us.com

APPROVED: _____ DATE: _____ DESCRIPTION: IN-GRADE LUMINAIRE -
TYPE: _____ SYMMETRIC - VERY WIDE BEAM

PROPRIETARY AND CONFIDENTIAL THE INFORMATION CONTAINED IN THIS DRAWING IS THE SOLE PROPERTY OF BEGA NORTH AMERICA, INC. ANY REPRODUCTION IN PART OR AS A WHOLE WITHOUT THE WRITTEN PERMISSION OF BEGA NORTH AMERICA, INC. IS PROHIBITED.	SIZE B	PART NO. 84351	REV -
	NOT TO SCALE	10/22/2025	SHEET 1 OF 2

REV	CHANGED BY	DESCRIPTION	DATE



BEGA			
1000 BEGA Way, Carpinteria, California 93013		P (805) 684-0533 - www.bega-us.com	
APPROVED: _____ DATE: _____		DESCRIPTION: IN-GRADE LUMINAIRE - SYMMETRIC - VERY WIDE BEAM	
TYPE: _____			
PROPRIETARY AND CONFIDENTIAL		SIZE	PART NO.
THE INFORMATION CONTAINED IN THIS DRAWING IS THE SOLE PROPERTY OF BEGA NORTH AMERICA, INC.		B	84351
ANY REPRODUCTION IN PART OR AS A WHOLE WITHOUT THE WRITTEN PERMISSION OF BEGA NORTH AMERICA, INC. IS PROHIBITED.		REV	-
		NOT TO SCALE	SHEET 2 OF 2