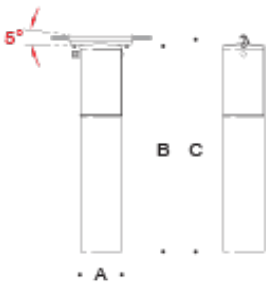


Tools Required:

- Flat head screw driver medium
- Phillips head screw driver medium
- 3mm hex head screw driver



Dimensions

- A: 7-1/2"
- B: 40-3/8"
- C: 42-1/4"



Weight: 16.6 lbs.

Notice to Installer for 84 406:

- See page 2 for specific product safety warnings.
- BEGA luminaires may be damaged if connected to conduit systems containing water- Article 300-5G of National Electric Code requires that "Conduits or raceways through which moisture may contact energized live parts shall be sealed or plugged at either or both ends"
- The cable hanger system of the luminaire is suitable for transverse suspension systems and longitudinal chain systems

84 406 - installation:

- Place cable hanger with luminaire onto the tension cable (3/16" to 7/16" cable (by others). Align unit axially.
- Tighten 6mm hex screws to attach luminaire (cable clamp) to tension cable.
- Secure 6mm hex screws with lock nut.
- Loosen (4) 5mm hex screws and remove connection box cover to allow for main supply cable (provided by others) wiring to be accesible in
- Using the kit provided, make (5) water tight supply wiring and driver wiring connections inside the connection box:

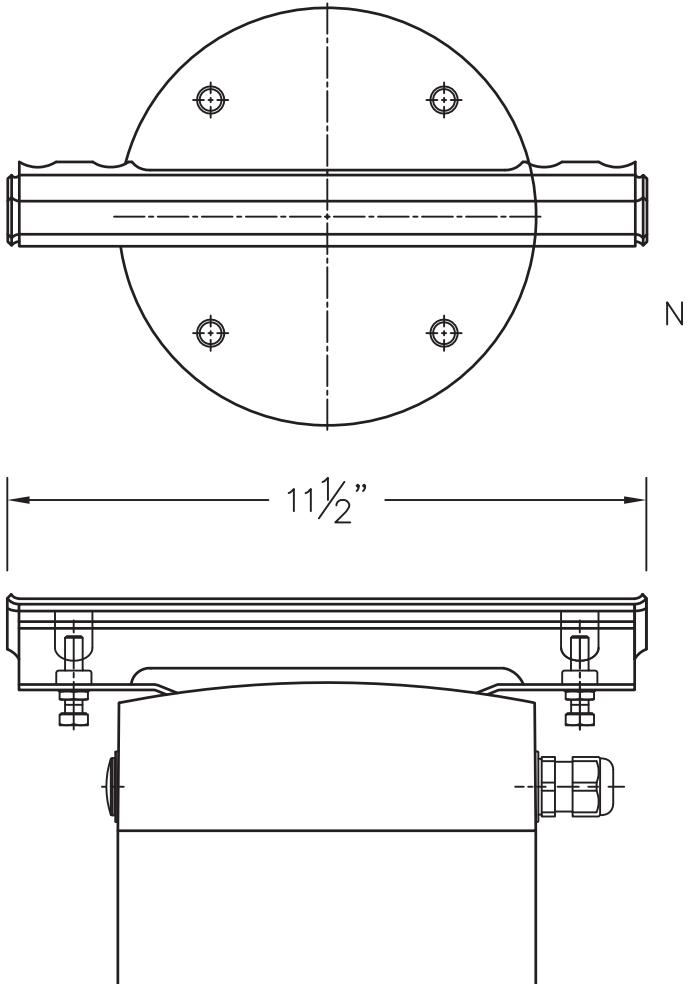
MAIN VOLTAGE SUPPLY WIRE TO BLACK LUMINAIRE WIRE
NEUTRAL (COMMON) SUPPLY WIRE TO WHITE LUMINAIRE WIRE
GREEN GROUND WIRE TO GREEN LUMINAIRE WIRE

Dimming (if applicable):

DIMMING CONTROL WIRE (+) TO POSITIVE DIM CONTROL WIRE
DIMMING CONTROL WIRE (-) TO NEGATIVE DIM CONTROL WIRE

Cap off each dimming wire using water proof connector if not using.

- Tighten supply cable strain relief and replace connection box cover.
- If no through wiring is done, one screw cable gland must be closed with a "dummy" plug



Relamping/Maintenance

Unscrew glass by turning counter-clockwise. Clean glass and luminaire using on solvent-free cleansers. Replace glass.

Accessories

Please refer to the appropriate accessory installation sheet for further instruction when applicable.

Replacement Parts

Description	Part No
Diffuser	15000493M
LED Driver (120-277V)	76004-02
LED Module (3000K)	LED-0770/830
LED Module (4000K)	LED-0770/840

Lamp: 35.7W LED Module

Product Safety Warnings:

CAUTION - RISK OF FIRE. THIS PRODUCT MUST BE INSTALLED IN ACCORDANCE WITH THE APPLICABLE INSTALLATION CODE BY A PERSON FAMILIAR WITH THE CONSTRUCTION AND OPERATION OF THE PRODUCT AND THE HAZARDS INVOLVED. SUITABLE FOR WET LOCATIONS.

MIN 90°C SUPPLY CONDUCTORS.

ATTENTION - RISQUE D'INCENDIE, CE PRODUIT DOIT ÊTRE INSTALLÉ SELON LE CODE D'INSTALLATION PERTINENT, PAR UNE PERSONNE QUI CONNAÎT BIEN LE PRODUIT ET SON FONCTIONNEMENT AINSI QUE LES RISQUES INHÉRENTS. CONVIENT AUX EMPLACEMENTS MOUILLÉS.

LES FILS D'ALIMENTATION 90°C MIN.
