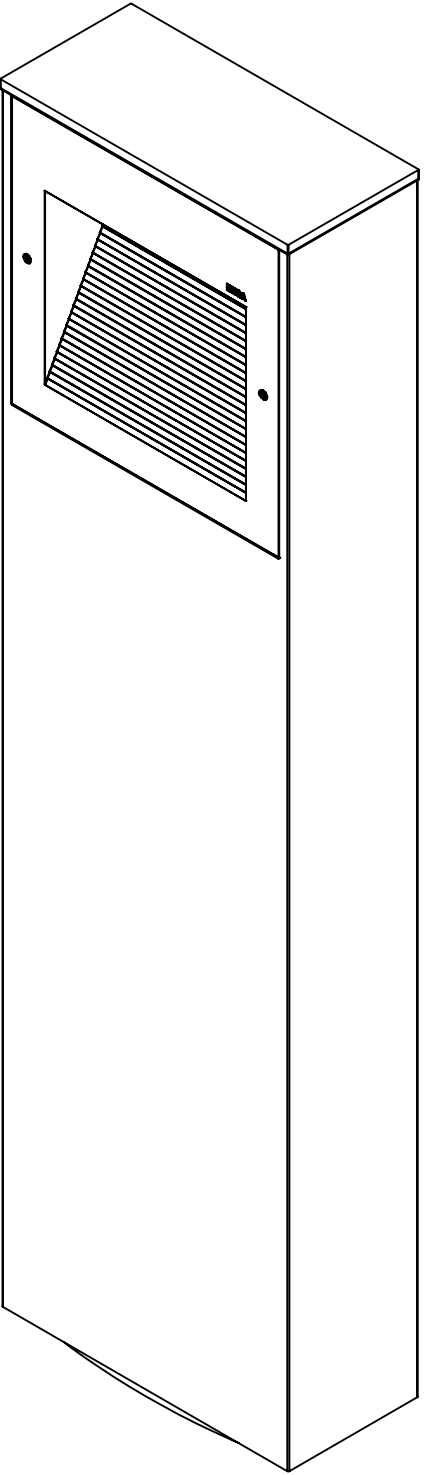


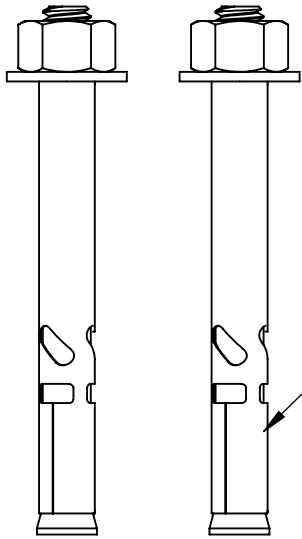
NOTE: INCLUDES ANCHOR KIT 79825



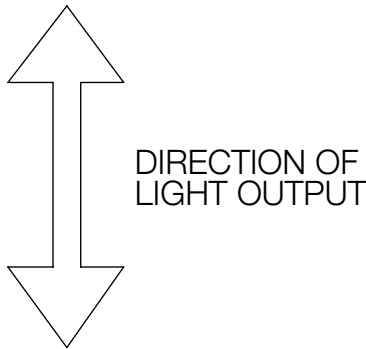
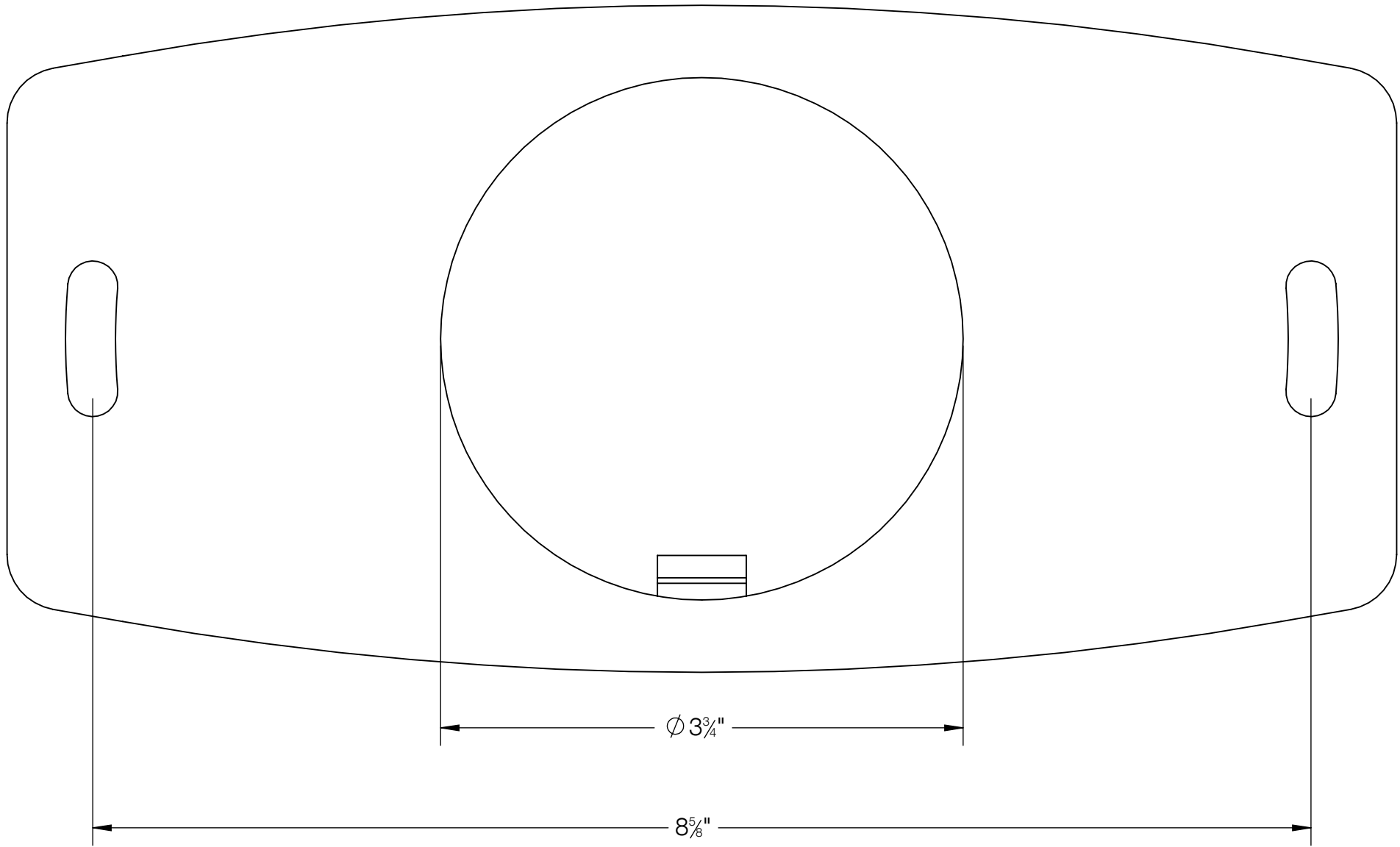
REV	CHANGED BY	DESCRIPTION	DATE

BEGA			
1000 BEGA Way, Carpinteria, California 93013		P (805) 684-0533 - www.bega-us.com	
APPROVED: _____ DATE: _____		DESCRIPTION: BOLLARD - SHIELDED	
TYPE: _____			
PROPRIETARY AND CONFIDENTIAL THE INFORMATION CONTAINED IN THIS DRAWING IS THE SOLE PROPERTY OF BEGA NORTH AMERICA, INC. ANY REPRODUCTION IN PART OR AS A WHOLE WITHOUT THE WRITTEN PERMISSION OF BEGA NORTH AMERICA, INC. IS PROHIBITED.		SIZE B	PART NO. 84415
		REV -	
NOT TO SCALE		5/25/2021	SHEET 1 OF 3

REV	CHANGED BY	DESCRIPTION	DATE



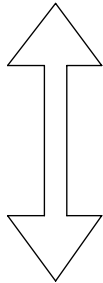
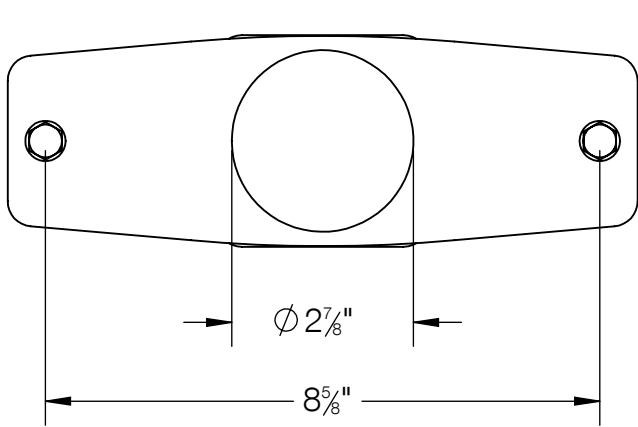
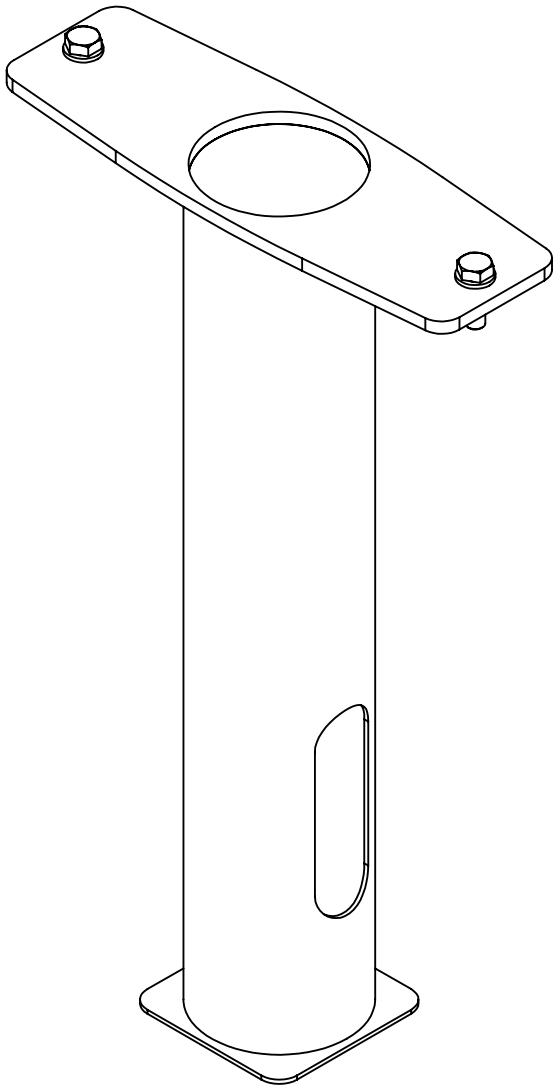
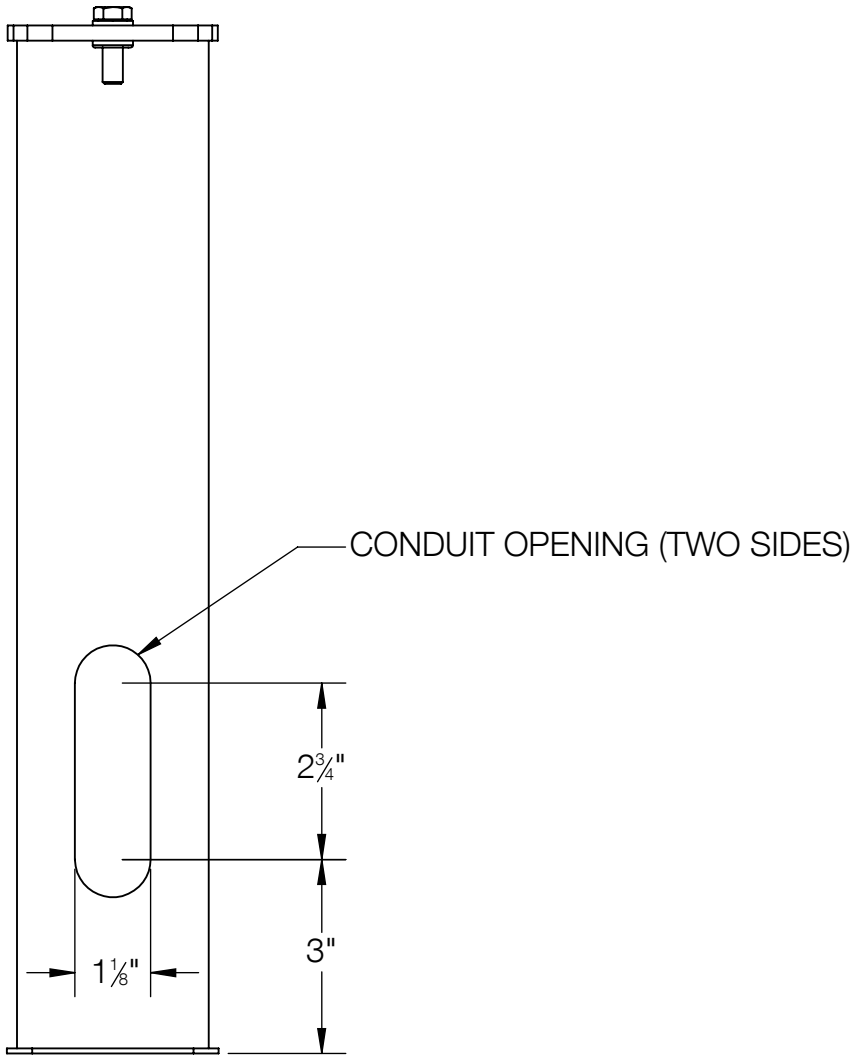
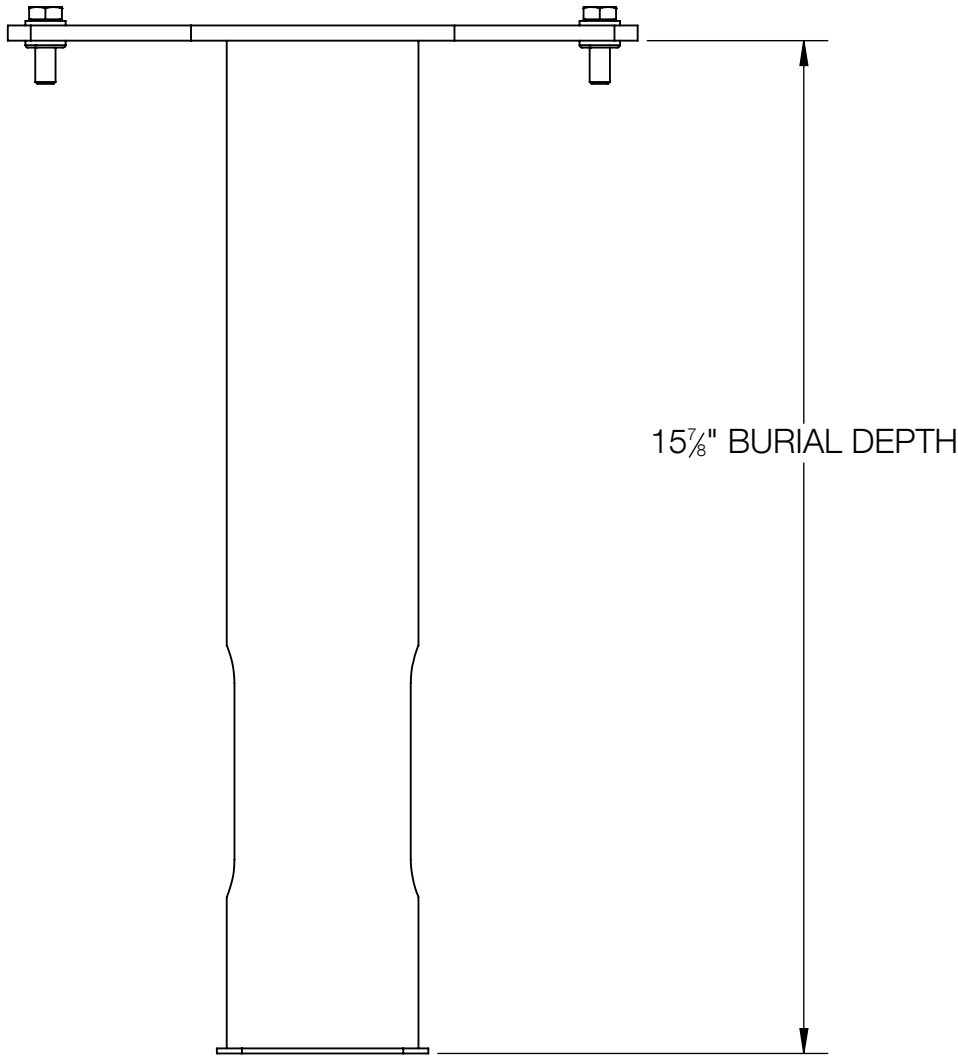
ANCHOR KIT INCLUDES (2)
5/16" X 2-1/2" STAINLESS
STEEL SLEEVE ANCHORS



NOTE: ANCHOR KIT DOES NOT INCLUDE TEMPLATE, USE BOLLARD BASE AS TEMPLATE (SHOWN)

BEGA				
1000 BEGA Way, Carpinteria, California 93013			P (805) 684-0533 - www.bega-us.com	
APPROVED: _____		DATE: _____		DESCRIPTION: ANCHOR KIT
TYPE: _____				
PROPRIETARY AND CONFIDENTIAL THE INFORMATION CONTAINED IN THIS DRAWING IS THE SOLE PROPERTY OF BEGA NORTH AMERICA, INC. ANY REPRODUCTION IN PART OR AS A WHOLE WITHOUT THE WRITTEN PERMISSION OF BEGA NORTH AMERICA, INC. IS PROHIBITED.		SIZE B	PART NO. 79825	REV -
		NOT TO SCALE	5/24/2021	SHEET 2 OF 3

REV	CHANGED BY	DESCRIPTION	DATE



DIRECTION OF
LIGHT OUTPUT

NOTE:
1. 71890 OPTIONAL DIRECT BURIAL ANCHOR KIT

BEGA

1000 BEGA Way, Carpinteria, California 93013 P (805) 684-0533 - www.bega-us.com

APPROVED: _____ DATE: _____
TYPE: _____

DESCRIPTION:
DIRECT BURIAL ANCHOR KIT

PROPRIETARY AND CONFIDENTIAL
THE INFORMATION CONTAINED IN THIS DRAWING IS THE SOLE PROPERTY
OF BEGA NORTH AMERICA, INC.
ANY REPRODUCTION IN PART OR AS A WHOLE WITHOUT THE WRITTEN
PERMISSION OF BEGA NORTH AMERICA, INC. IS PROHIBITED.

SIZE	PART NO.	REV
B	71890	-
NOT TO SCALE	6/2/2021	SHEET 3 OF 3