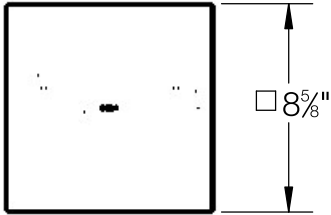
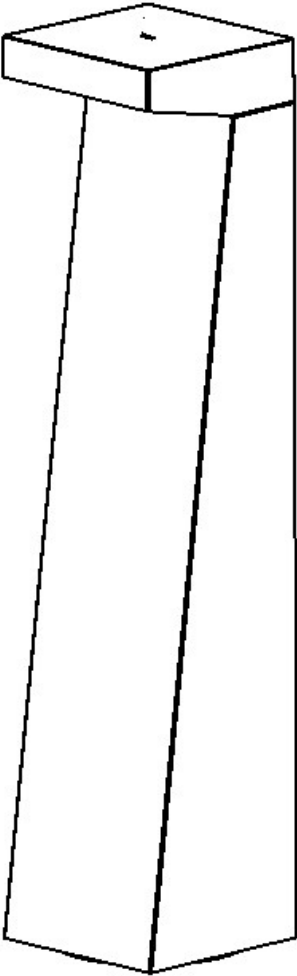
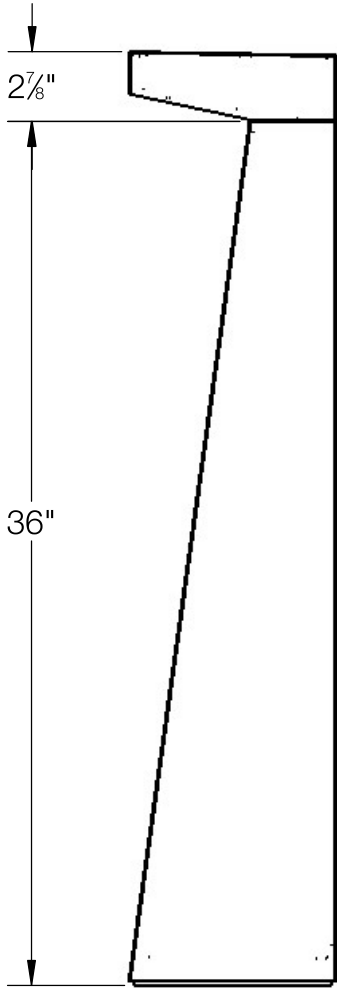
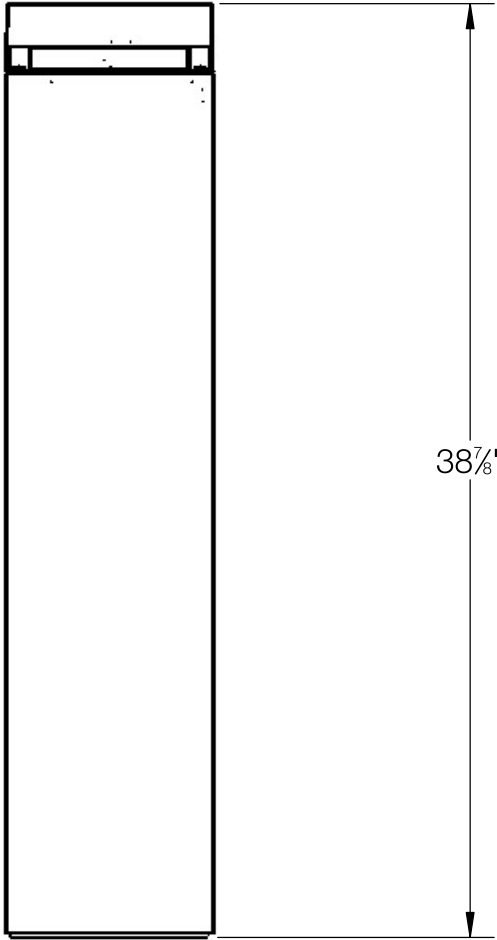


REV	CHANGED BY	DESCRIPTION	DATE



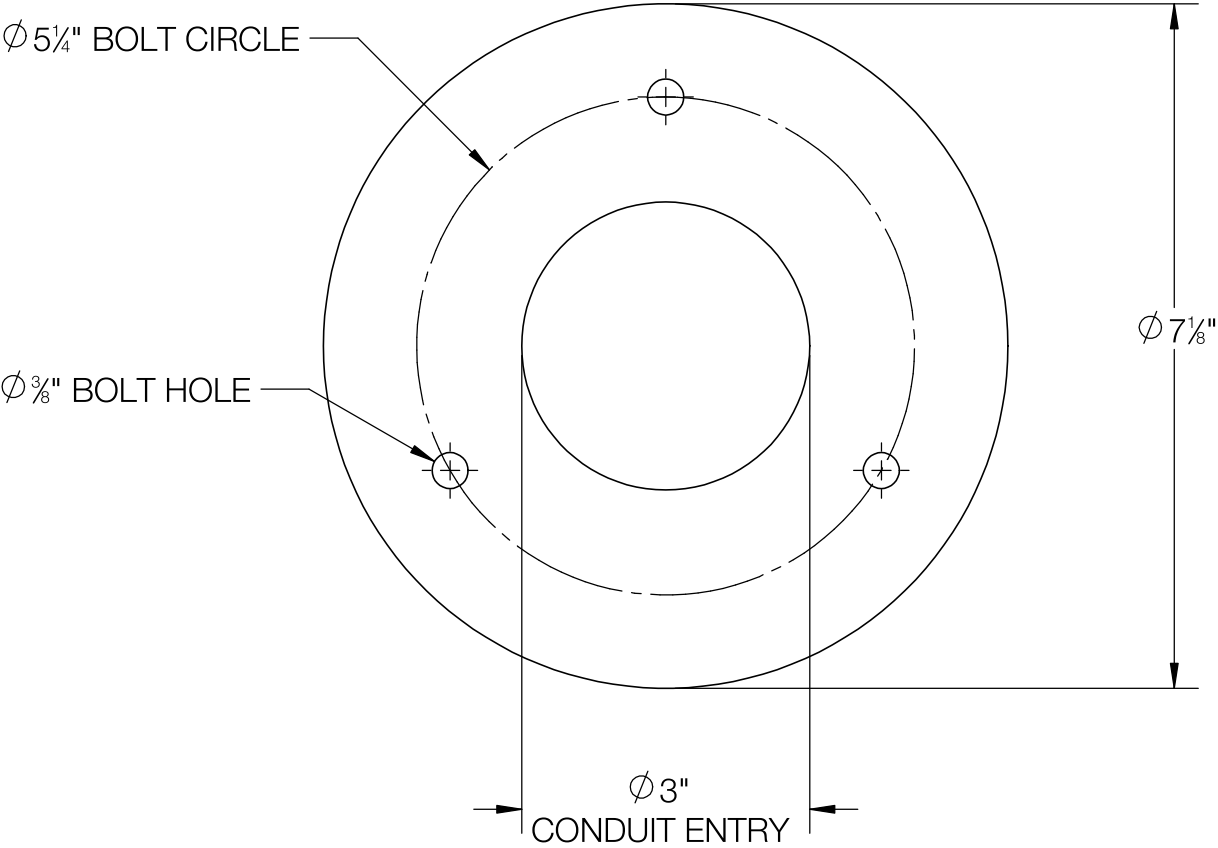
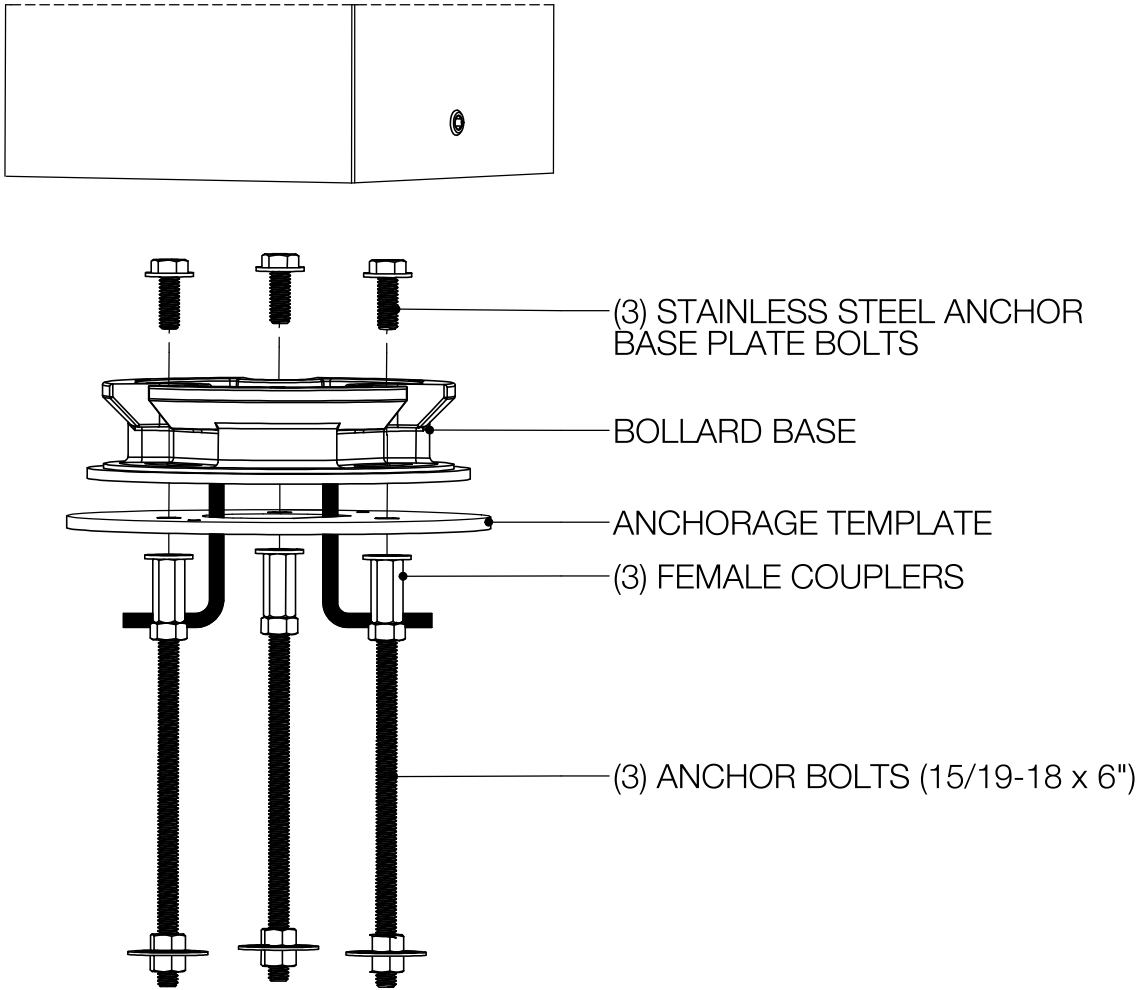
- NOTE:
- 1. STANDARD ANCHORAGE KIT (INCLUDED), PAGE 2
  - 2. DIRECT BURIAL ANCHORAGE KIT (OPTIONAL), PAGE 3



**BEGA**

1000 BEGA Way, Carpinteria, California 93013		P (805) 684-0533 - www.bega-us.com		
APPROVED: _____ DATE: _____		DESCRIPTION: BOLLARD - ASYMMETRIC FLAT BEAM		
TYPE: _____				
PROPRIETARY AND CONFIDENTIAL  THE INFORMATION CONTAINED IN THIS DRAWING IS THE SOLE PROPERTY OF BEGA NORTH AMERICA, INC.  ANY REPRODUCTION IN PART OR AS A WHOLE WITHOUT THE WRITTEN PERMISSION OF BEGA NORTH AMERICA, INC. IS PROHIBITED.		SIZE	PART NO.	REV
		B	84 462	-
		NOT TO SCALE	12/8/2022	SHEET 1 OF 3

REV	CHANGED BY	DESCRIPTION	DATE



**BEGA**

1000 BEGA Way, Carpinteria, California 93013 P (805) 684-0533 - [www.bega-us.com](http://www.bega-us.com)

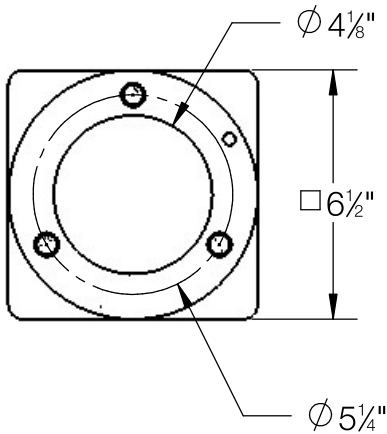
APPROVED: \_\_\_\_\_ DATE: \_\_\_\_\_  
TYPE: \_\_\_\_\_

DESCRIPTION:  
ANCHORAGE KIT

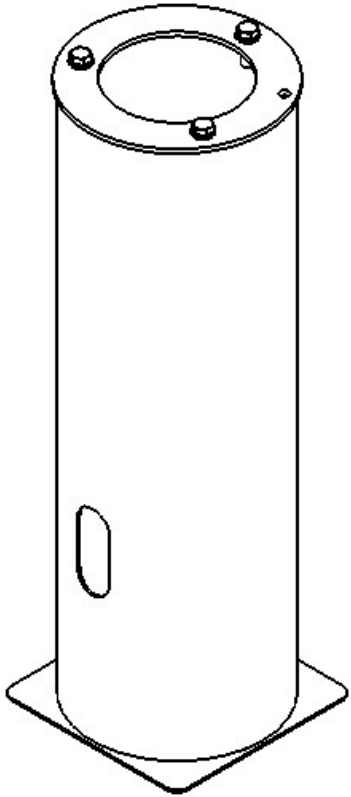
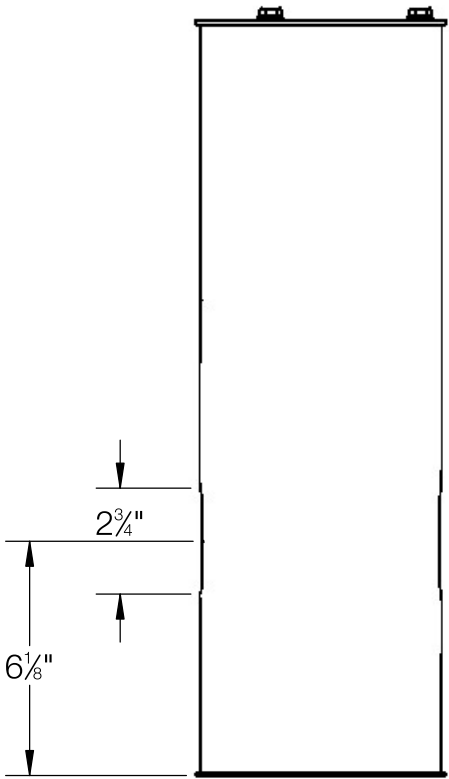
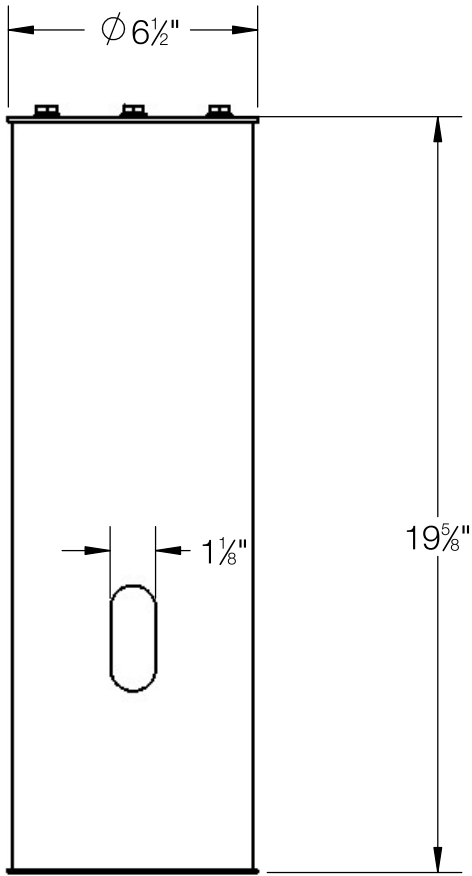
**PROPRIETARY AND CONFIDENTIAL**  
THE INFORMATION CONTAINED IN THIS DRAWING IS THE SOLE PROPERTY OF BEGA NORTH AMERICA, INC.  
ANY REPRODUCTION IN PART OR AS A WHOLE WITHOUT THE WRITTEN PERMISSION OF BEGA NORTH AMERICA, INC. IS PROHIBITED.

SIZE <b>B</b>	PART NO. <b>79 818</b>	REV <b>-</b>
NOT TO SCALE	4/25/2024	SHEET 2 OF 3

REV	CHANGED BY	DESCRIPTION	DATE



- NOTE:
- 1. DIRECT BURIAL ANCHORAGE IS PROVIDED WITH 1" HEX HEAD SCREWS WITH WASHERS
  - 2. BOLLARD BASE PROVIDED WITH LUMINAIRE



BEGA			
1000 BEGA Way, Carpinteria, California 93013		P (805) 684-0533 - www.bega-us.com	
APPROVED: _____ DATE: _____		DESCRIPTION: DIRECT BURIAL ANCHORAGE	
TYPE: _____			
PROPRIETARY AND CONFIDENTIAL THE INFORMATION CONTAINED IN THIS DRAWING IS THE SOLE PROPERTY OF BEGA NORTH AMERICA, INC. ANY REPRODUCTION IN PART OR AS A WHOLE WITHOUT THE WRITTEN PERMISSION OF BEGA NORTH AMERICA, INC. IS PROHIBITED.		SIZE B	REV -
		PART NO. 70 896	
NOT TO SCALE		4/25/2024	SHEET 3 OF 3