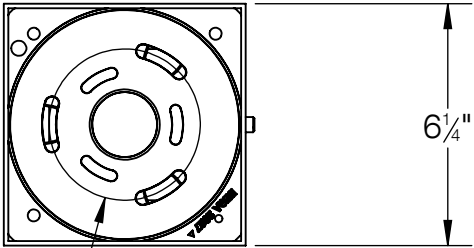
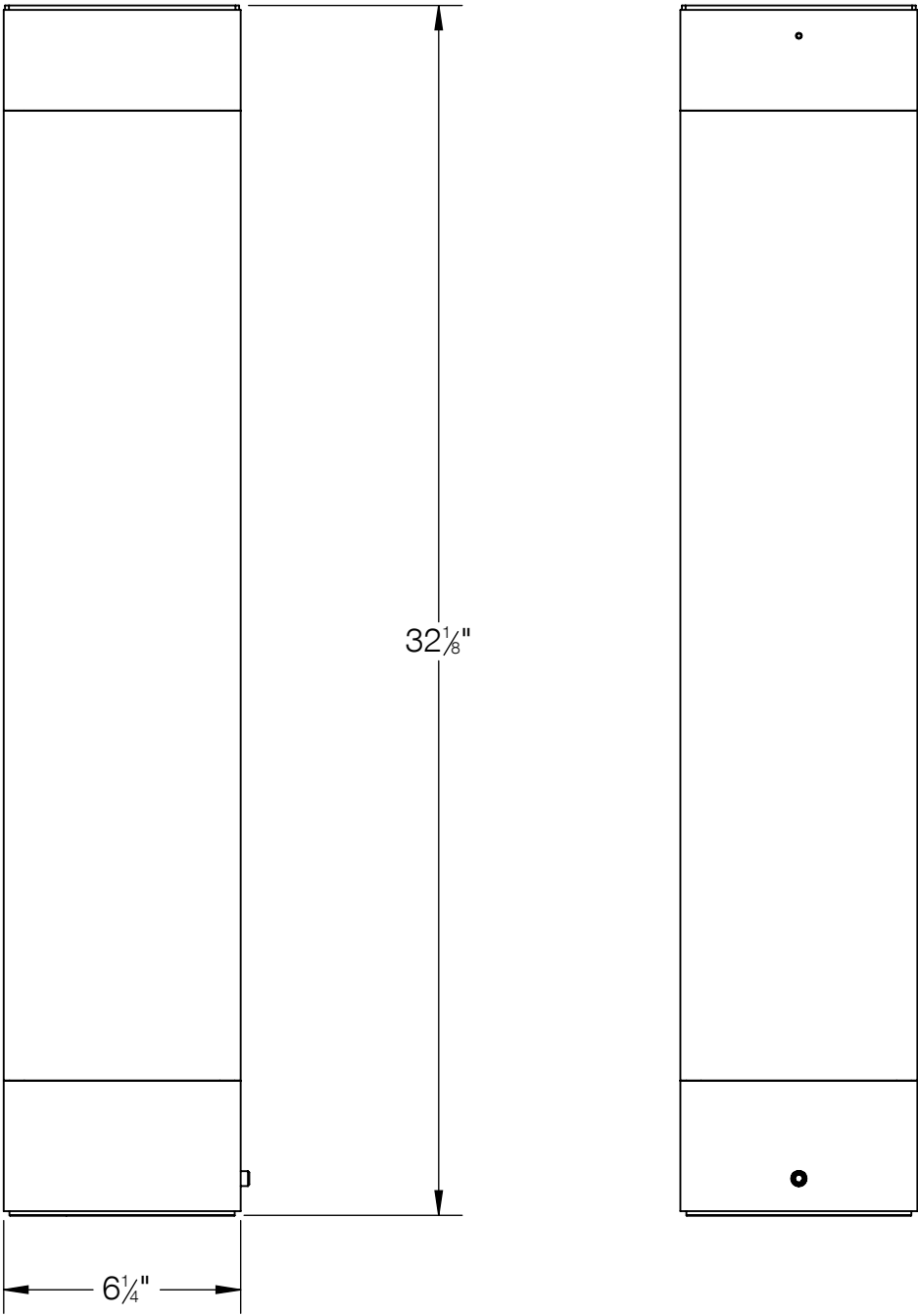
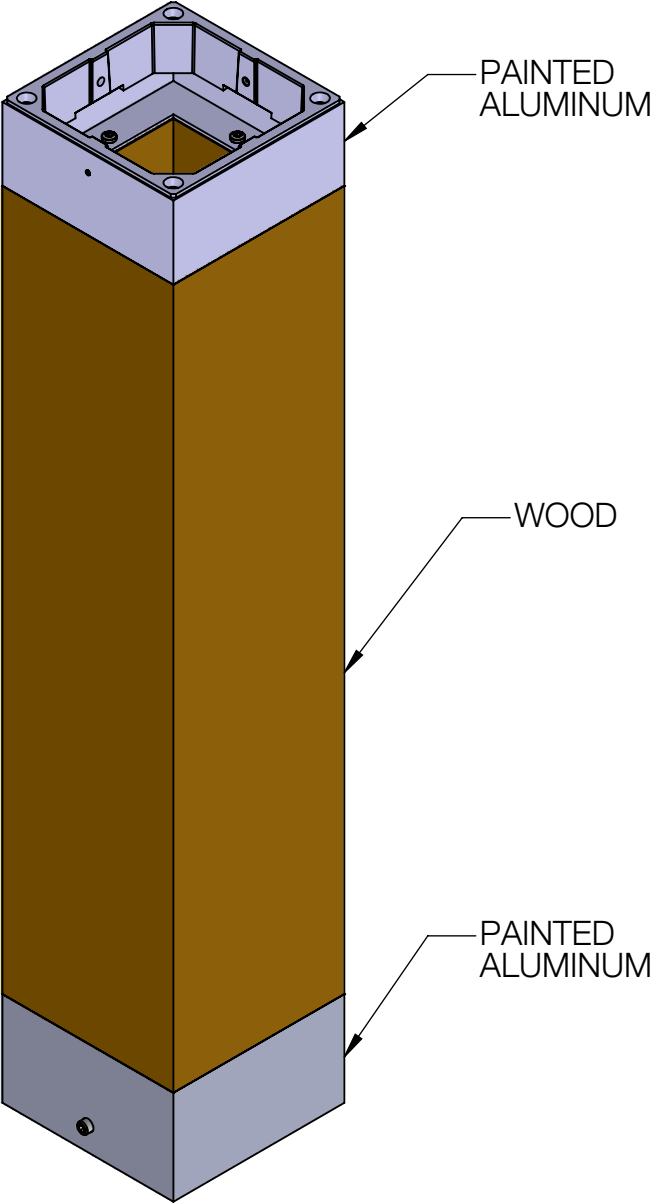


REV	CHANGED BY	DESCRIPTION	DATE



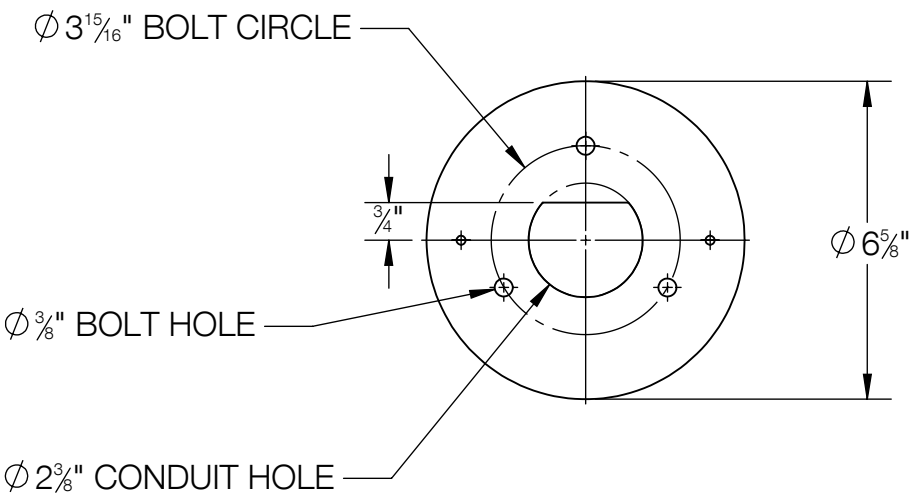
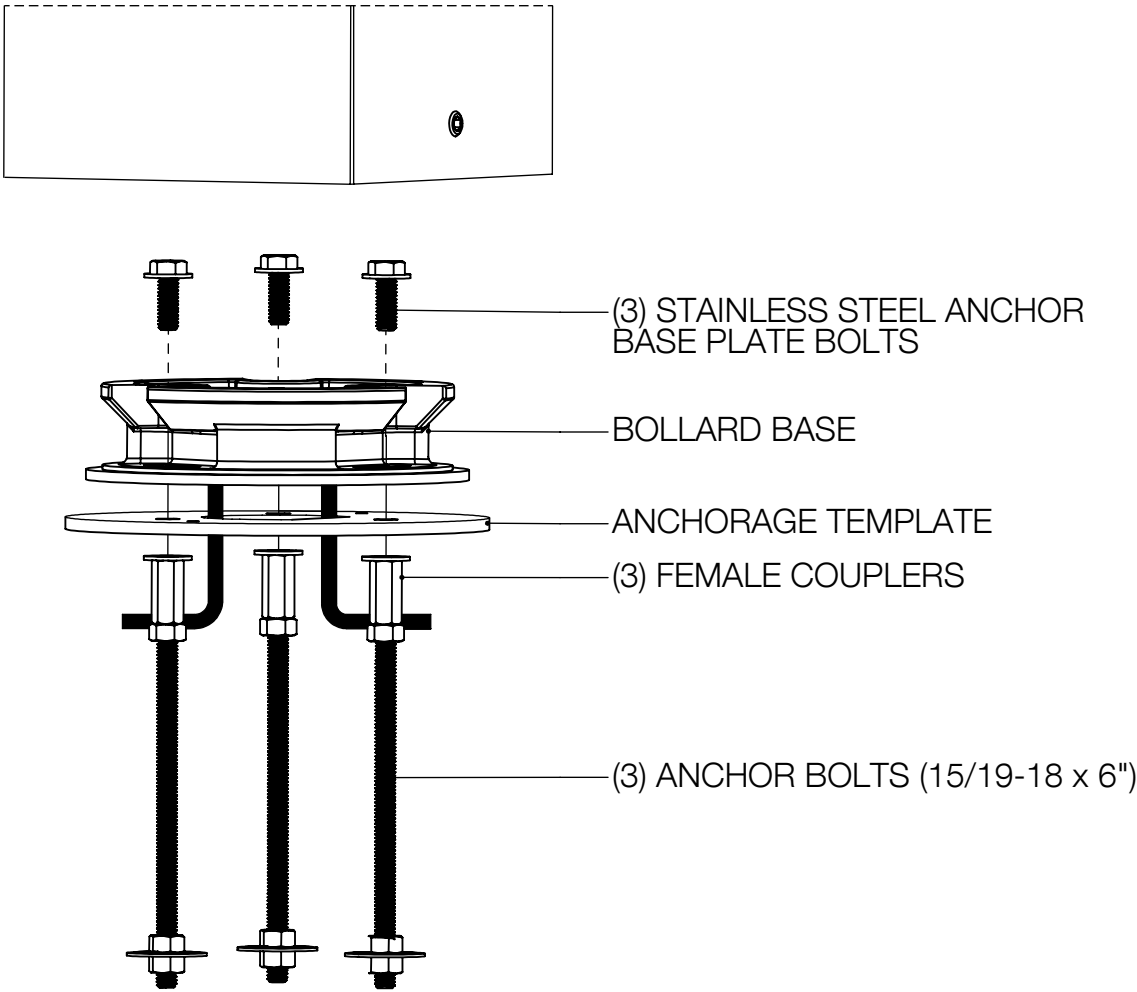
Ø 3 15/16" BOLT CIRCLE



- NOTES:
- 1. INCLUDES 79817 - ANCHORAGE KIT
  - 2. FOR USE WITH COMPATIBLE SYSTEM BOLLARD HEAD ONLY

BEGA				
1000 BEGA Way, Carpinteria, California 93013			P (805) 684-0533 - www.bega-us.com	
APPROVED: _____ DATE: _____		DESCRIPTION:  WOOD SYSTEM BOLLARD TUBE - SQUARE		
TYPE: _____				
PROPRIETARY AND CONFIDENTIAL  THE INFORMATION CONTAINED IN THIS DRAWING IS THE SOLE PROPERTY OF BEGA NORTH AMERICA, INC.  ANY REPRODUCTION IN PART OR AS A WHOLE WITHOUT THE WRITTEN PERMISSION OF BEGA NORTH AMERICA, INC. IS PROHIBITED.		SIZE	PART NO.	REV
		B	84466	-
		NOT TO SCALE	6/24/2024	SHEET 1 OF 3

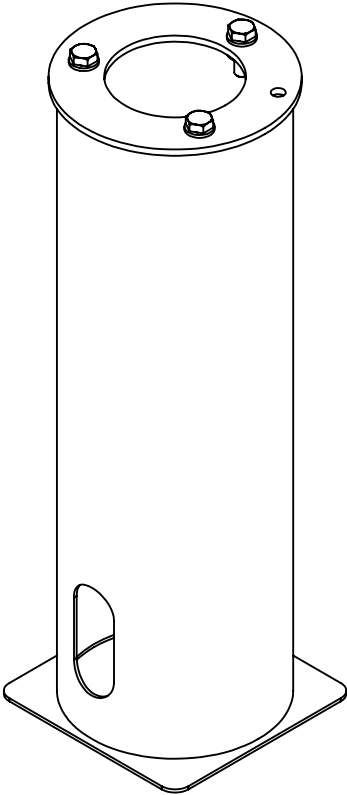
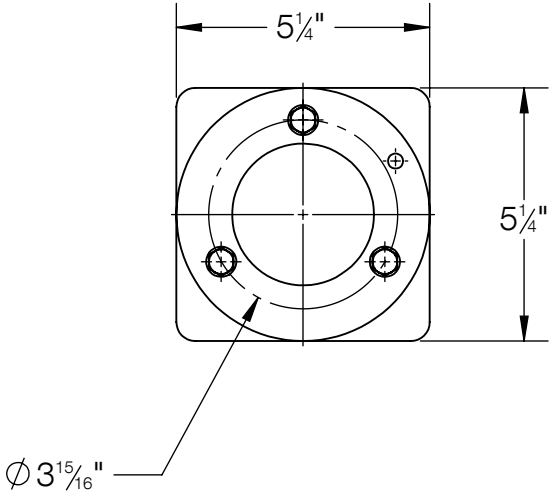
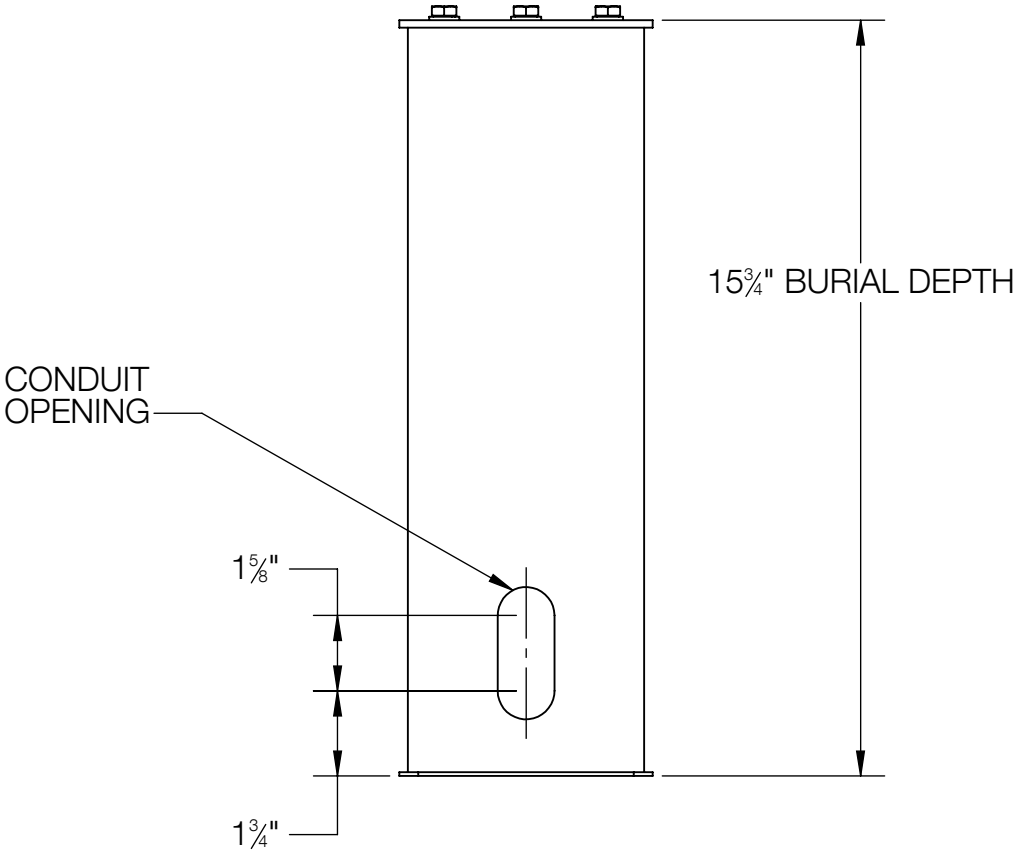
REV	CHANGED BY	DESCRIPTION	DATE



NOTE:  
1. 79817 ANCHOR KIT - INCLUDED

BEGA				
1000 BEGA Way, Carpinteria, California 93013			P (805) 684-0533 - www.bega-us.com	
APPROVED: _____ DATE: _____		DESCRIPTION: ANCHORAGE KIT		
TYPE: _____				
PROPRIETARY AND CONFIDENTIAL THE INFORMATION CONTAINED IN THIS DRAWING IS THE SOLE PROPERTY OF BEGA NORTH AMERICA, INC. ANY REPRODUCTION IN PART OR AS A WHOLE WITHOUT THE WRITTEN PERMISSION OF BEGA NORTH AMERICA, INC. IS PROHIBITED.		SIZE B	PART NO. 79817	REV -
		NOT TO SCALE	6/6/2024	SHEET 2 OF 3

REV	CHANGED BY	DESCRIPTION	DATE



NOTE:  
1. 70895 OPTIONAL DIRECT BURIAL ANCHOR KIT

BEGA				
1000 BEGA Way, Carpinteria, California 93013			P (805) 684-0533 - www.bega-us.com	
APPROVED: _____ DATE: _____		DESCRIPTION: DIRECT BURIAL ANCHOR KIT		
TYPE: _____				
PROPRIETARY AND CONFIDENTIAL THE INFORMATION CONTAINED IN THIS DRAWING IS THE SOLE PROPERTY OF BEGA NORTH AMERICA, INC. ANY REPRODUCTION IN PART OR AS A WHOLE WITHOUT THE WRITTEN PERMISSION OF BEGA NORTH AMERICA, INC. IS PROHIBITED.		SIZE	PART NO.	REV
		B	70895	-
		NOT TO SCALE	6/6/2024	SHEET 3 OF 3