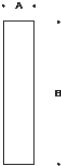


Tools Required:

- Drill with 1/4" drill bit
- 4mm hex screwdriver
- Adjustable wrench

Overview:

Weight: 41.4 lbs.



Dimensions

A: 8-5/8"

B: 34-5/8"



Notice to Installer:

1. See page 2 for specific product safety warnings.
2. Bollard tube may be damaged if connected to conduit systems that contain water - Article 300-5G of the National Electric Code requires that "Conduits or raceways through which moisture may contact energized live parts shall be sealed or plugged at either or both ends."
3. For proper installation, an accompanying bollard head must be selected with the bollard tube.
4. BEGA 79818 anchorage kit provided. See individual installation instructions for details.
5. It is recommended that when installed in planting areas that the bollard base be slightly elevated to avoid prolonged submerging due to heavy rains.
6. Wet location listing does not imply suitability for exposure to standing water for long periods of time.

79818 anchorage installation (Figure 1):

1. Provide means to bring supply wiring to the bollard in accordance with local code.
2. Assemble anchorage kit. Unscrew the (3) hex bolts from the female couplers. Remove each hex bolt and washer. Align each anchor bolt with the hole in the template. Attach each anchor bolt to the template by replacing the washer and hex bolt and tightening. Do not remove nuts and washers from bottom of anchor bolt; this provides the pullout force. See Figure 1.
3. Determine the finished grade for the application. Use leveling hardware to adjust template to desired finished height after pouring.
4. Install anchorage kit using either method:
  - A. Attach template to forming or cross bracing using the (2) nail holes provided in the template. Level template properly. Pour concrete.
  - B. Insert anchorage assembly into poured concrete. Concrete must be vibrated to ensure proper anchorage setting. Level template properly.
5. Remove (3) hex bolts and washers once anchorage is set.
6. Remove template. Smooth concrete pad as required.

**NOTE:** Allow adequate time for concrete to cure properly.
7. Loosen the 4mm hex set screw on the side of the bollard base, and twist the bollard base casting to remove.
8. Align the bollard base casting mounting holes with anchorage coupler holes.
9. Bolt the bollard base casting to the anchorage kit using (3) hex bolts and washers to level.

84467 installation:

1. Secure bollard head to bollard tube using the bollard head installation instructions.
2. Make supply wiring connections at the base of the bollard tube:

MAIN VOLTAGE SUPPLY WIRE TO BLACK LUMINAIRE WIRE  
NEUTRAL (COMMON) SUPPLY WIRE TO WHITE LUMINAIRE WIRE  
GREEN GROUND WIRE TO GREEN LUMINAIRE WIRE

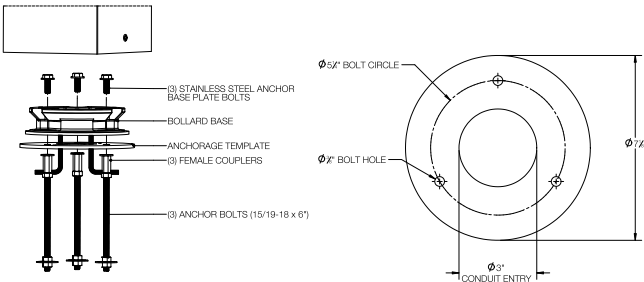
0-10V Dimming (if applicable):  
DIMMING CONTROL WIRE (+) TO POSITIVE DRIVER DIM CONTROL WIRE  
DIMMING CONTROL WIRE (-) TO NEGATIVE DRIVER DIM CONTROL WIRE
3. Place bollard tube over the bollard base that is attached to the 79818 anchorage by aligning the (3) notches with the (3) anchor points inside the bollard tube.
4. Rotate bollard to desired position on bollard base and secure by tightening 4mm set

Accessories

Please refer to the appropriate accessory installation sheet for further instruction when applicable.

Direct burial anchorage 70896

Figure 1: Anchorage Kit BEGA 79818



Maintenance:

Clean regularly with solvent-free cleaner removing dirt and debris. Do not use high pressure cleaners.

Replacement Parts

Consult factory for all other replacement components.

**Product Safety Warnings:**

**THIS PRODUCT MUST BE INSTALLED IN ACCORDANCE WITH THE APPLICABLE INSTALLATION CODE BY A PERSON FAMILIAR WITH THE CONSTRUCTION AND OPERATION OF THE PRODUCT AND THE HAZARDS INVOLVED. SUITABLE FOR WET LOCATIONS. MIN 90°C SUPPLY CONDUCTORS.**

**CE PRODUIT DOIT ÊTRE INSTALLÉ SELON LE CODE D'INSTALLATION PERTINENT, PAR UNE PERSONNE QUI CONNAÎT BIEN LE PRODUIT ET SON FONCTIONNEMENT AINSI QUE LES RISQUES INHÉRENTS. CONVIENT AUX EMPLACEMENTS MOUILLÉ.**

**LES FILS D'ALIMENTATION 90°C MIN.**