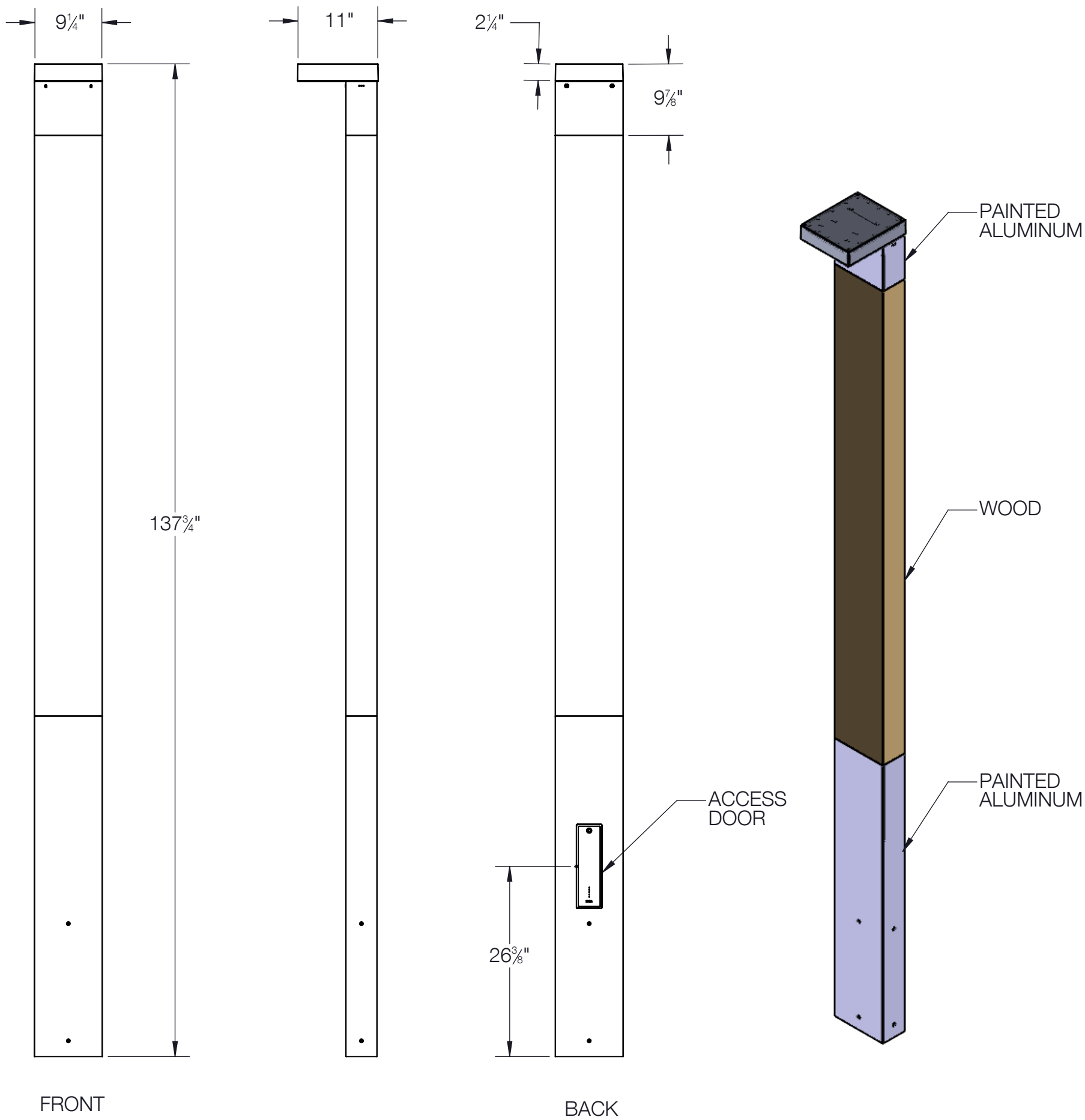


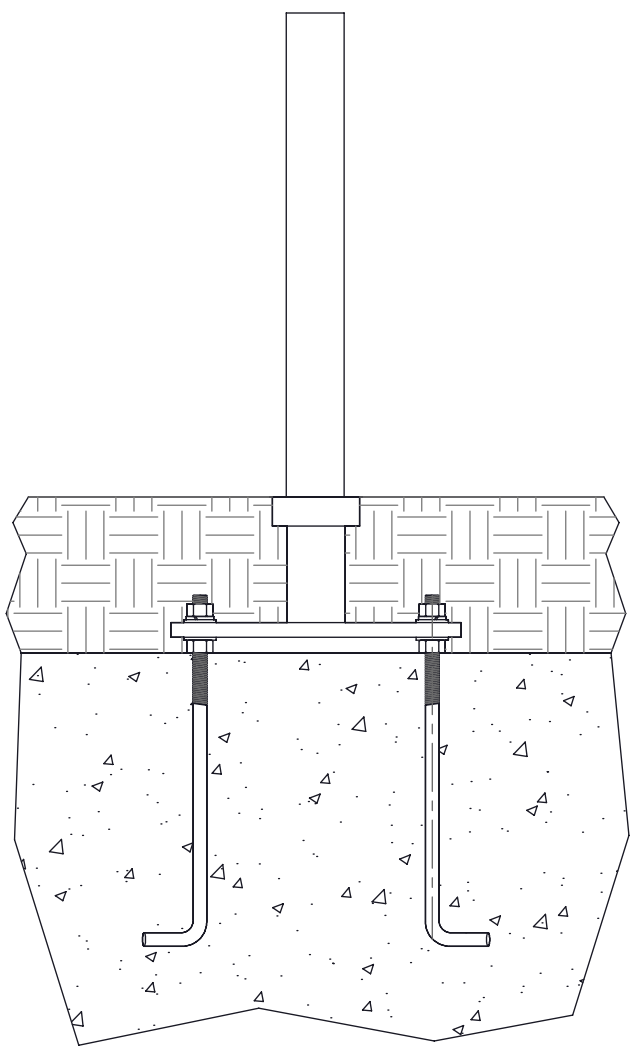
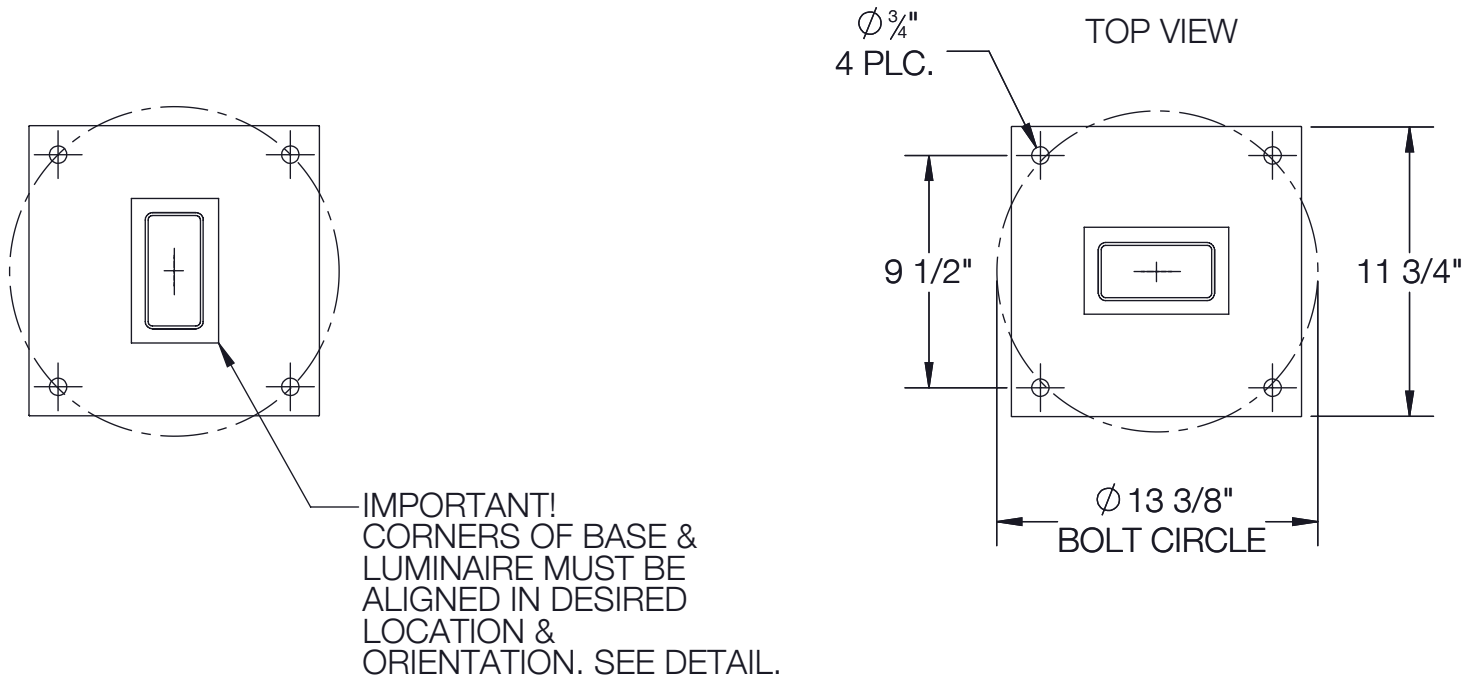
REV	CHANGED BY	DESCRIPTION	DATE



- NOTES:
1. INCLUDES 79802 - ANCHOR KIT
  2. INCLUDES SPECIAL TOOL FOR ACCESS DOOR
  3. INCLUDES KIT 76 - WATERPROOF WIRING CONNECTORS
  4. OPTIONAL 71140 - DIRECT BURIAL ANCHOR KIT

BEGA				
1000 BEGA Way, Carpinteria, California 93013		P (805) 684-0533 - www.bega-us.com		
APPROVED: _____ DATE: _____		DESCRIPTION: WOOD BUILDING ELEMENT - ASYMMETRIC · SINGLE		
TYPE: _____				
PROPRIETARY AND CONFIDENTIAL THE INFORMATION CONTAINED IN THIS DRAWING IS THE SOLE PROPERTY OF BEGA NORTH AMERICA, INC. ANY REPRODUCTION IN PART OR AS A WHOLE WITHOUT THE WRITTEN PERMISSION OF BEGA NORTH AMERICA, INC. IS PROHIBITED.		SIZE	PART NO.	REV
		B	84468	-
		NOT TO SCALE	11/8/2022	SHEET 1 OF 3

REV	CHANGED BY	DESCRIPTION	DATE



THIS SURFACE MUST  
BE FLUSH TO  
FINISHED GRADE

FINISHED GRADE

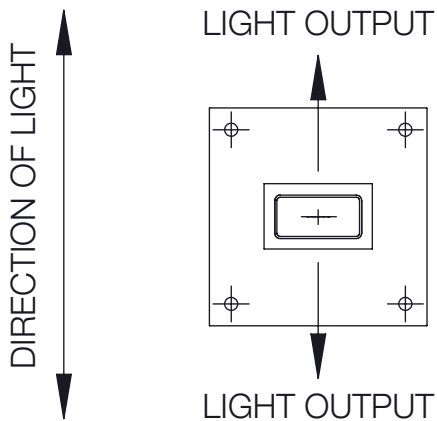
CONCRETE  
FOOTING

(4) 5/8" X 14" X 2" 'L'  
ANCHOR BOLTS WITH  
LEVELING WASHERS,  
LOCK WASHERS, AND  
HEX NUTS

25 3/8"

5 3/4"

IMPORTANT! ANCHOR ORIENTATION



BEGA

1000 BEGA Way, Carpinteria, California 93013

P (805) 684-0533 - [www.bega-us.com](http://www.bega-us.com)

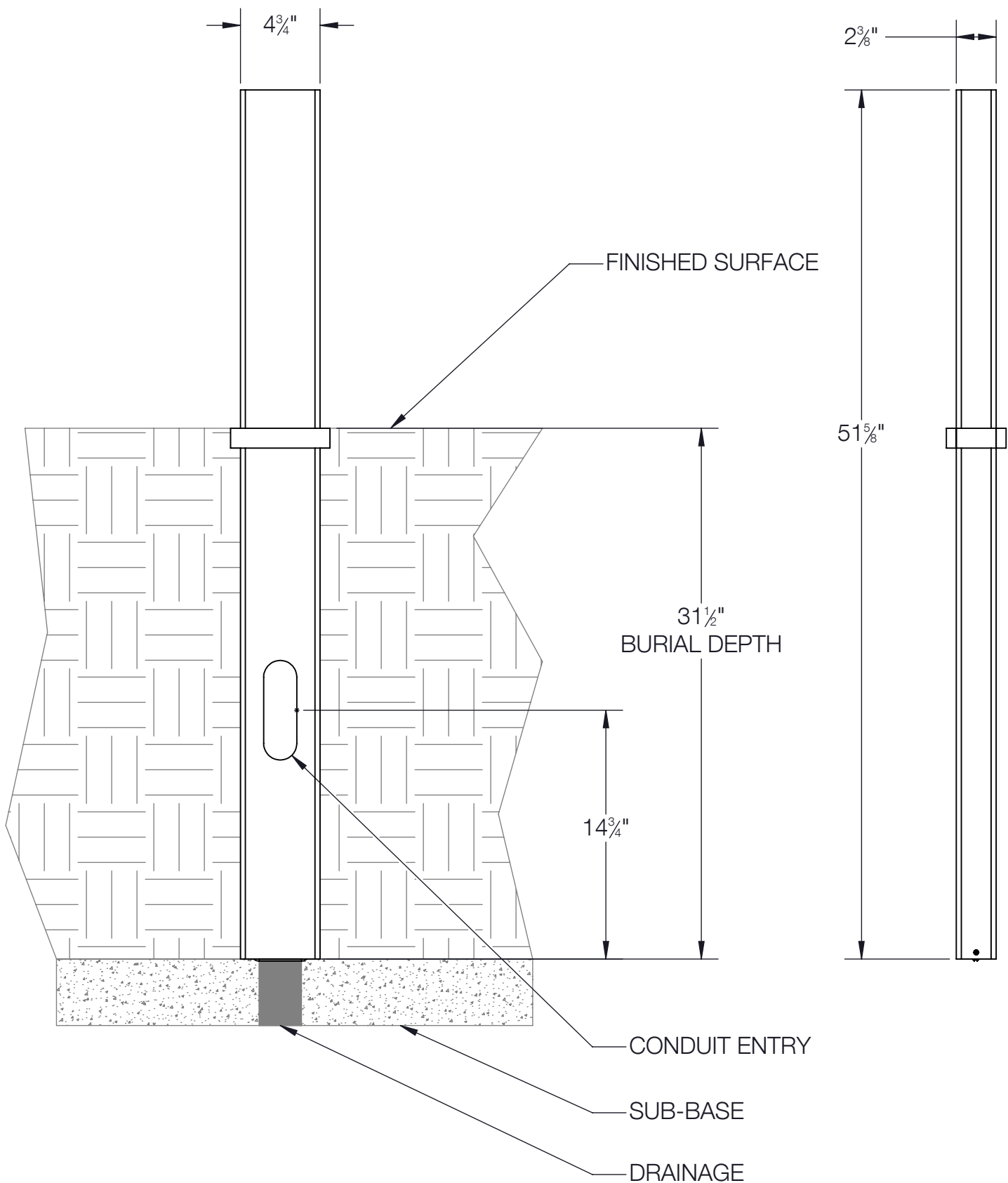
APPROVED: \_\_\_\_\_ DATE: \_\_\_\_\_  
TYPE: \_\_\_\_\_

DESCRIPTION:  
ANCHOR KIT - INCLUDED

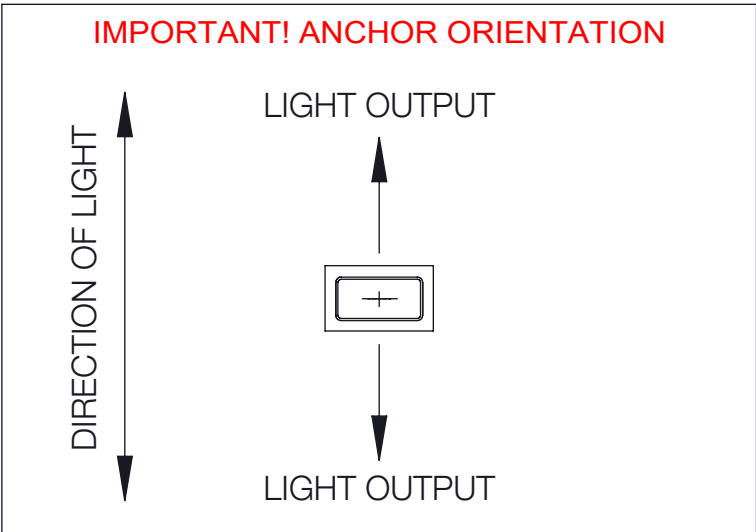
PROPRIETARY AND CONFIDENTIAL  
THE INFORMATION CONTAINED IN THIS DRAWING IS THE SOLE PROPERTY  
OF BEGA NORTH AMERICA, INC.  
ANY REPRODUCTION IN PART OR AS A WHOLE WITHOUT THE WRITTEN  
PERMISSION OF BEGA NORTH AMERICA, INC. IS PROHIBITED.

SIZE	PART NO.	REV
B	79802	-
NOT TO SCALE	11/8/2022	SHEET 2 OF 3

REV	CHANGED BY	DESCRIPTION	DATE



- NOTES:
- OPTIONAL DIRECT BURIAL ANCHORAGE
  - INCLUDES ANCHOR PLATE FOR STABILITY DURING INSTALLATION.



BEGA			
1000 BEGA Way, Carpinteria, California 93013		P (805) 684-0533 - <a href="http://www.bega-us.com">www.bega-us.com</a>	
APPROVED: _____ DATE: _____		DESCRIPTION: ANCHOR KIT - OPTIONAL DIRECT BURIAL	
TYPE: _____		SIZE B	PART NO. 71140
PROPRIETARY AND CONFIDENTIAL THE INFORMATION CONTAINED IN THIS DRAWING IS THE SOLE PROPERTY OF BEGA NORTH AMERICA, INC. ANY REPRODUCTION IN PART OR AS A WHOLE WITHOUT THE WRITTEN PERMISSION OF BEGA NORTH AMERICA, INC. IS PROHIBITED.		REV -	
NOT TO SCALE		11/8/2022	SHEET 3 OF 3