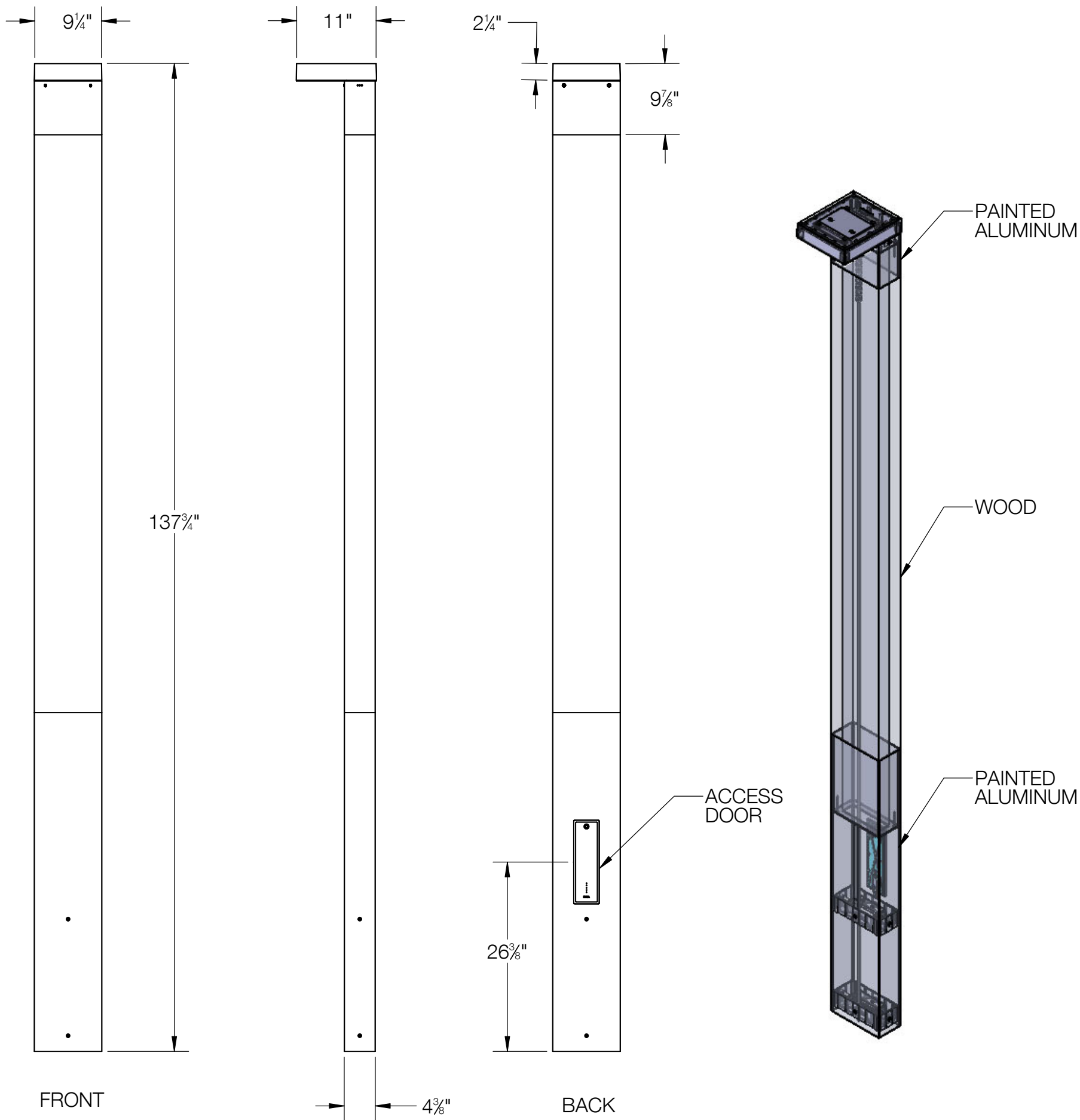


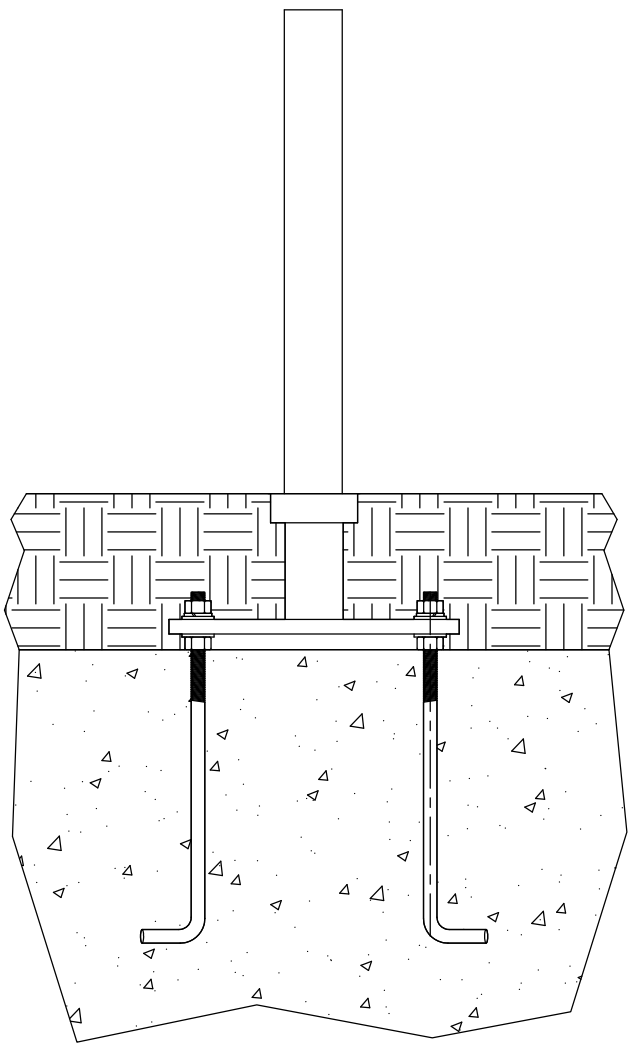
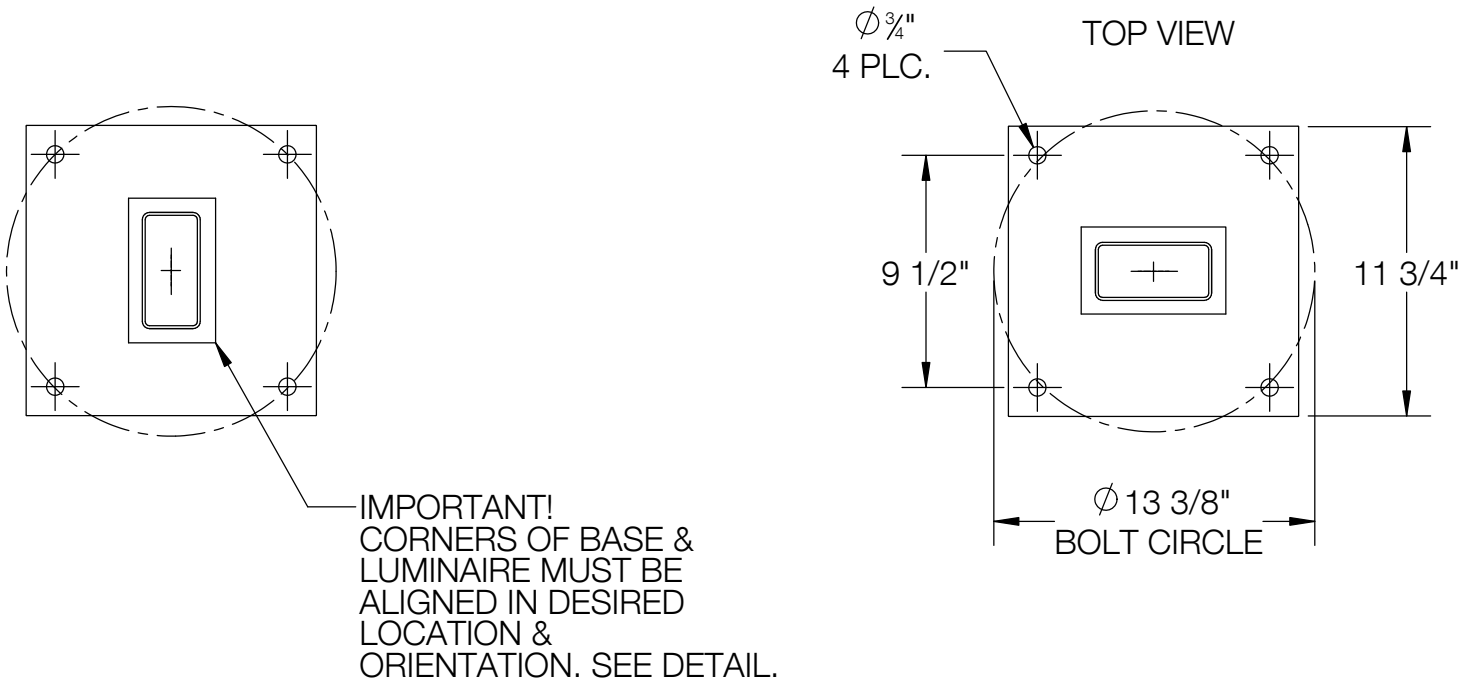
REV	CHANGED BY	DESCRIPTION	DATE



- NOTES:
1. INCLUDES 79802 - ANCHOR KIT
 2. INCLUDES SPECIAL TOOL FOR ACCESS DOOR
 3. INCLUDES KIT 76 - WATERPROOF WIRING CONNECTORS
 4. OPTIONAL 71140 - DIRECT BURIAL ANCHOR KIT

BEGA					
1000 BEGA Way, Carpinteria, California 93013			P (805) 684-0533 - www.bega-us.com		
APPROVED: _____ DATE: _____			DESCRIPTION: WOOD BUILDING ELEMENT - ASYMMETRIC WIDE BEAM · SINGLE		
TYPE: _____					
PROPRIETARY AND CONFIDENTIAL THE INFORMATION CONTAINED IN THIS DRAWING IS THE SOLE PROPERTY OF BEGA NORTH AMERICA, INC. ANY REPRODUCTION IN PART OR AS A WHOLE WITHOUT THE WRITTEN PERMISSION OF BEGA NORTH AMERICA, INC. IS PROHIBITED.			SIZE	PART NO.	REV
			B	84470	-
			NOT TO SCALE		11/8/2022

REV	CHANGED BY	DESCRIPTION	DATE



THIS SURFACE MUST BE FLUSH TO FINISHED GRADE

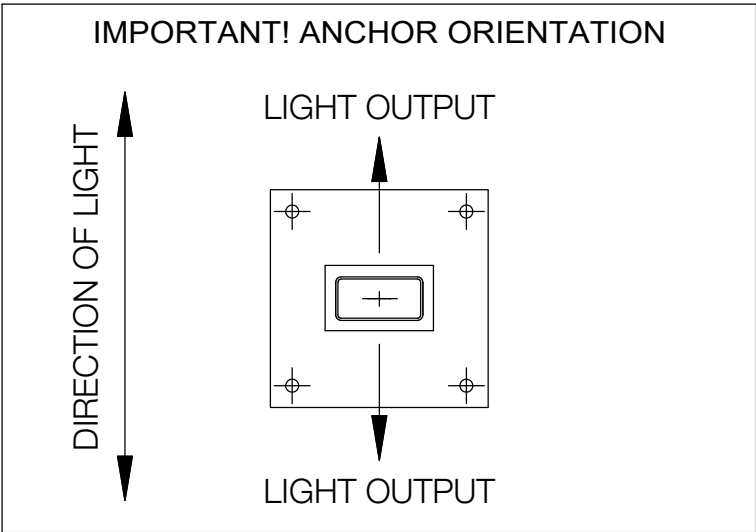
FINISHED GRADE

CONCRETE FOOTING

(4) 5/8" X 14" X 2" 'L' ANCHOR BOLTS WITH LEVELING WASHERS, LOCK WASHERS, AND HEX NUTS

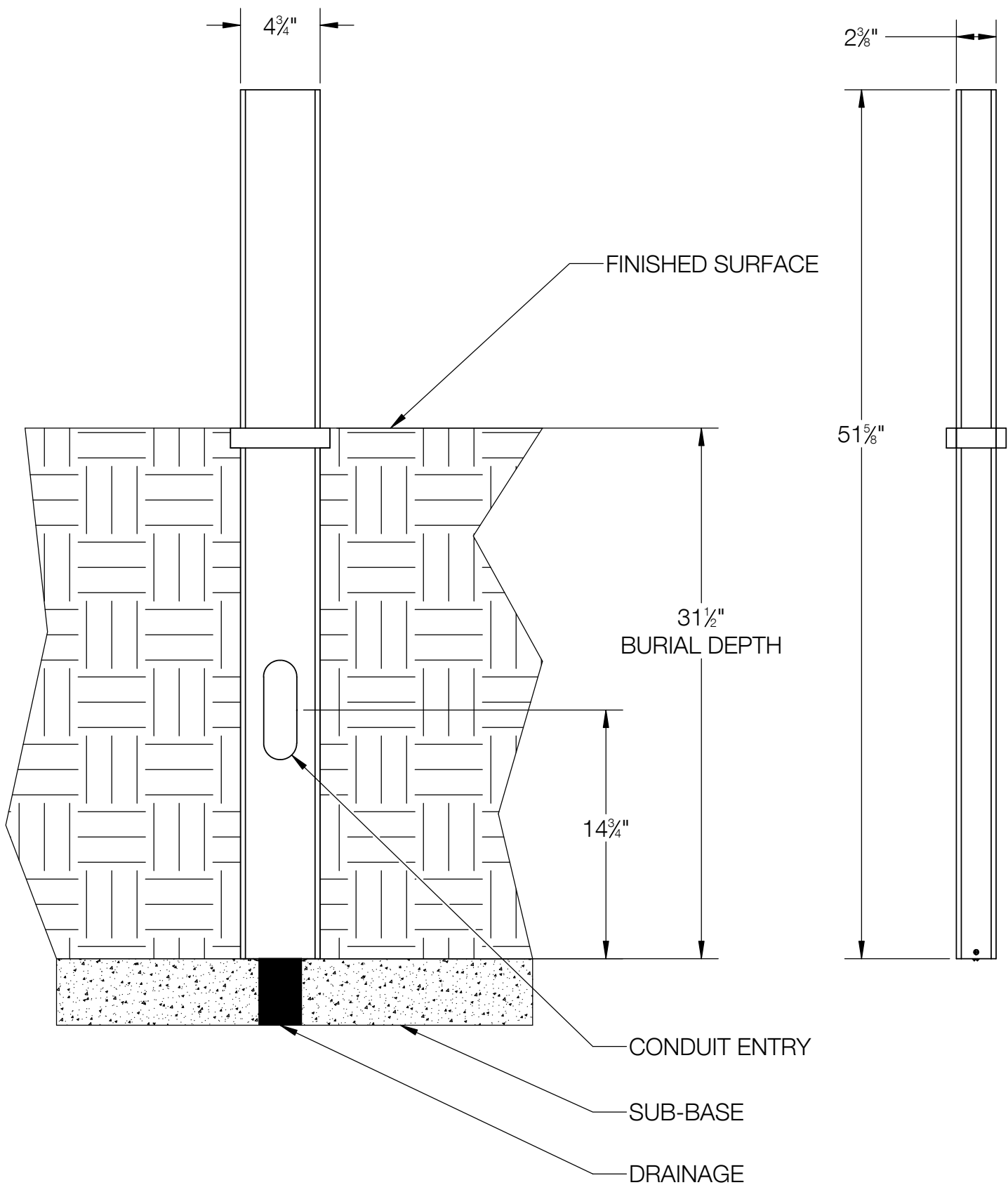
25 3/8"

5 3/4"

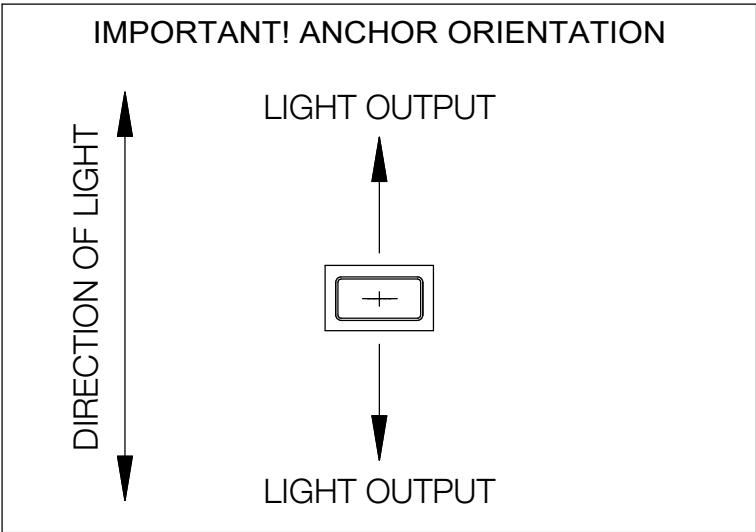


BEGA			
1000 BEGA Way, Carpinteria, California 93013		P (805) 684-0533 - www.bega-us.com	
APPROVED: _____ DATE: _____		DESCRIPTION: ANCHOR KIT - INCLUDED	
TYPE: _____			
PROPRIETARY AND CONFIDENTIAL		SIZE	REV
THE INFORMATION CONTAINED IN THIS DRAWING IS THE SOLE PROPERTY OF BEGA NORTH AMERICA, INC. ANY REPRODUCTION IN PART OR AS A WHOLE WITHOUT THE WRITTEN PERMISSION OF BEGA NORTH AMERICA, INC. IS PROHIBITED.		B	-
		PART NO.	
		79802	
		NOT TO SCALE	
		11/8/2022	
		SHEET 2 OF 3	

REV	CHANGED BY	DESCRIPTION	DATE



- NOTES:
- OPTIONAL DIRECT BURIAL ANCHORAGE
 - INCLUDES ANCHOR PLATE FOR STABILITY DURING INSTALLATION.



BEGA			
1000 BEGA Way, Carpinteria, California 93013		P (805) 684-0533 - www.bega-us.com	
APPROVED: _____ DATE: _____		DESCRIPTION: ANCHOR KIT - OPTIONAL DIRECT BURIAL	
TYPE: _____		SIZE	REV
PROPRIETARY AND CONFIDENTIAL THE INFORMATION CONTAINED IN THIS DRAWING IS THE SOLE PROPERTY OF BEGA NORTH AMERICA, INC. ANY REPRODUCTION IN PART OR AS A WHOLE WITHOUT THE WRITTEN PERMISSION OF BEGA NORTH AMERICA, INC. IS PROHIBITED.		B	-
NOT TO SCALE		11/8/2022	SHEET 3 OF 3