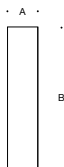


Tools Required:

- Drill with 1/4" drill bit
- 4mm hex screwdriver

Overview:

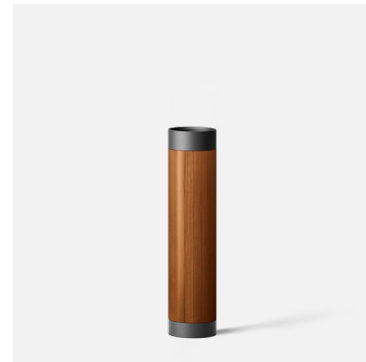
Weight: 10.1 lbs.



Dimensions

A: 5-1/2"

B: 25-7/8"



Notice to Installer:

1. See page 2 for specific product safety warnings.
2. Bollard tube may be damaged if connected to conduit systems that contain water - Article 300-5G of the National Electric Code requires that "Conduits or raceways through which moisture may contact energized live parts shall be sealed or plugged at either or both ends."
3. For proper installation, an accompanying bollard head must be selected with the bollard tube.
4. BEGA 79824 anchorage kit provided. See individual installation instructions for details.
5. It is recommended that when installed in planting areas that the bollard base be slightly elevated to avoid prolonged submerging due to heavy rains.
6. Wet location listing does not imply suitability for exposure to standing water for long periods of time.

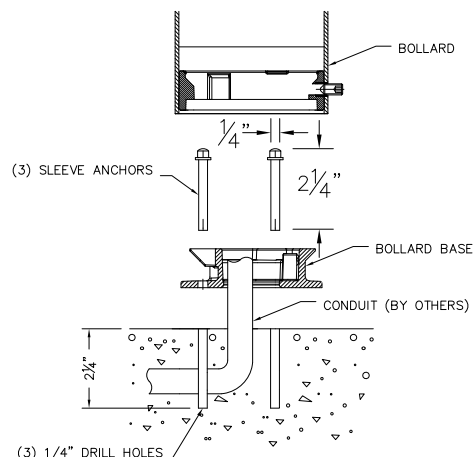
79824 anchorage installation (Figure 1):

1. Provide means to bring supply wiring to bollard in accordance with local code and pour concrete for finished grade.
2. Loosen 4mm set screw at bollard base and remove base plate.
3. After establishing finished grade, mark the location of the (3) anchorage drill holes using the bollard base of the fixture as a template
4. Drill (3) 1/4" holes in concrete at the marked locations.
5. Feed supply wires up through bollard base and conduit.
6. Align bollard base holes with drill holes.
7. Drive the sleeve anchors through the bollard base mounting holes and into the drilled holes until secure and seated flush.

84 476 installation:

1. Secure bollard head to bollard tube using the bollard head installation instructions.
2. Make supply wiring connections at the base of the bollard tube:
MAIN VOLTAGE SUPPLY WIRE TO BLACK LUMINAIRE WIRE
NEUTRAL (COMMON) SUPPLY WIRE TO WHITE LUMINAIRE WIRE
GREEN GROUND WIRE TO GREEN LUMINAIRE WIRE
0-10V Dimming (if applicable):
DIMMING CONTROL WIRE (+) TO POSITIVE DRIVER DIM CONTROL WIRE
DIMMING CONTROL WIRE (-) TO NEGATIVE DRIVER DIM CONTROL WIRE
3. Place bollard tube over the bollard base that is attached to the 79824 anchorage by aligning the (3) notches with the (3) anchor points inside the bollard tube.
4. Rotate bollard to desired position on bollard base and secure by tightening 4mm set screw.

Figure 1: Anchorage Kit BEGA 79824



Accessories

Please refer to the appropriate accessory installation sheet for further instruction when applicable.

Direct burial anchorage 70894

Maintenance:

Clean regularly with solvent-free cleaner removing dirt and debris. Do not use high pressure cleaners.

Replacement Parts

Consult factory for all other replacement components.

Product Safety Warnings:

THIS PRODUCT MUST BE INSTALLED IN ACCORDANCE WITH THE APPLICABLE INSTALLATION CODE BY A PERSON FAMILIAR WITH THE CONSTRUCTION AND OPERATION OF THE PRODUCT AND THE HAZARDS INVOLVED. SUITABLE FOR WET LOCATIONS. MIN 90°C SUPPLY CONDUCTORS.

CE PRODUIT DOIT ÊTRE INSTALLÉ SELON LE CODE D'INSTALLATION PERTINENT, PAR UNE PERSONNE QUI CONNAÎT BIEN LE PRODUIT ET SON FONCTIONNEMENT AINSI QUE LES RISQUES INHÉRENTS. CONVIENT AUX EMPLACEMENTS MOUILLÉ.

LES FILS D'ALIMENTATION 90°C MIN.