

**Tools Required:**

- 6mm hex screw driver

**Overview:**

LED Watts: 24.6W  
 System Watts: 29.2W  
 Controllability: 0-10V, TRIAC, and ELV dimmable  
 Weight: 13.9 lbs.  
 Protection Class: IP67

**Notice to Installer:**

1. **BEGA luminaires may be damaged if connected to conduit systems containing water - Article 300-5G of National Electric Code requires that "Conduits or raceways through which moisture may contact energized live parts shall be sealed or plugged at either or both ends".**
2. A separate weatherproof junction box suitable for outdoor locations must be provided by others for wiring connections to supply power.
3. Proper drainage **MUST** be provided. Failure to do so may result in water intrusion into luminaire housing and void warranty.
4. Includes KIT #40 waterproof connector kit for making wiring connections.
5. For proper installation, **INSTALLATION HOUSING AND FINISHED SURFACE MUST BE INSTALLED SO THAT THE TOP OF THE INSTALLATION HOUSING (BOTTOM OF FACEPLATE) SITS FLUSH OR SLIGHTLY ABOVE THE FINISHED SURFACE.**
6. When installing fixture in organic mulch, surround installation housing with approximately 6" of sand or other non-organic material.
7. **DO NOT OPEN LUMINAIRE HOUSING UNLESS DIRECTED TO BY FACTORY.**

**Installation: BB84618 Installation Housing**

1. Establish location of weatherproof junction box. The luminaire is pre-wired with 9' of waterproof cable, factory sealed to the luminaire housing. Make sure enough cable is left to lift the luminaire out of the installation housing for maintenance.
2. Establish foundation for installation housing and provide proper drainage away from wiring box. The foundation should be sufficient support for anticipated load onto luminaire.
3. Using the (4) 3/8" diameter holes on the installation housing flange, anchor the installation housing to the foundation using hardware by others making sure the housing is oriented properly (Figure 1: Direction of illumination).
4. Fill in ground material around installation housing i.e. concrete, earth, gravel, mulch, and finish surface.

**Installation: 84618 luminaire**

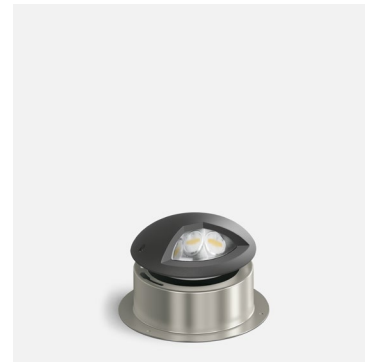
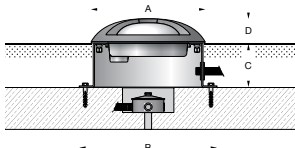
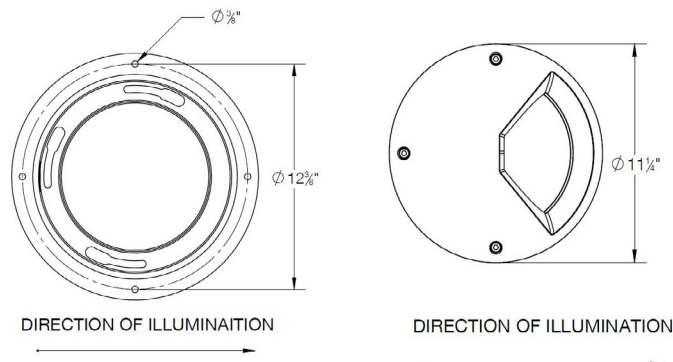
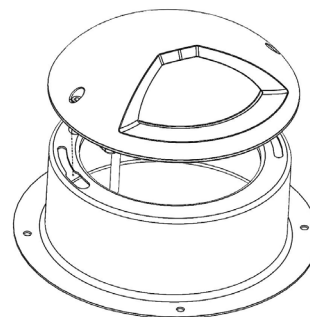
1. Feed luminaire cable into installation housing and make wiring connections inside the weatherproof wiring box using watertight connectors (provided):  
 MAIN VOLTAGE SUPPLY WIRE TO BLACK LUMINAIRE WIRE  
 NEUTRAL (COMMON) SUPPLY WIRE TO WHITE LUMINAIRE WIRE  
 GREEN GROUND WIRE TO GREEN LUMINAIRE WIRE  
 0-10V dimming (if applicable):  
 DIMMING CONTROL WIRE (+) TO PURPLE LUMINAIRE WIRE  
 DIMMING CONTROL WIRE (-) TO GREY LUMINAIRE WIRE
2. Place luminaire into installation housing by aligning the three hex screws with the wider portion of the slots on the installation housing (Figure 2: Luminaire installation).
3. Rotate luminaire in installation housing to fine tune aiming, and tighten the (3) 6mm hex screws on the luminaire top casting to secure luminaire in place.

**Accessories**

Please refer to the appropriate accessory installation sheet for further instruction when applicable.

**Dimensions**

**A:** 11 1/4"  
**B:** 13 5/8"  
**C:** 4 1/4"  
**D:** 2 3/8"


**Figure 1: Direction of illumination**

**Figure 2: Luminaire installation**

**Maintenance:**

Clean regularly with solvent-free cleaner removing dirt and debris. Do not use high pressure cleaners.

**Replacement Parts**

See label inside of fixture for LED replacement part number.

Consult factory for all other replacement components.

**Product Safety Warnings:**

**THIS PRODUCT MUST BE INSTALLED IN ACCORDANCE WITH THE APPLICABLE INSTALLATION CODE BY A PERSON FAMILIAR WITH THE CONSTRUCTION AND OPERATION OF THE PRODUCT AND THE HAZARDS INVOLVED. SUITABLE FOR WET LOCATIONS. MIN 90°C SUPPLY CONDUCTORS.**

**CE PRODUIT DOIT ÊTRE INSTALLÉ SELON LE CODE D'INSTALLATION PERTINENT, PAR UNE PERSONNE QUI CONNAÎT BIEN LE PRODUIT ET SON FONCTIONNEMENT AINSI QUE LES RISQUES INHÉRENTS. CONVIENT AUX EMPLACEMENTS MOUILLÉS.**

**LES FILS D'ALIMENTATION 90°C MIN.**