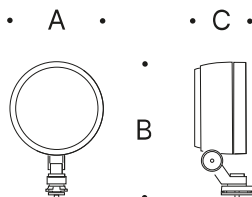


Tools Required:

- 4mm hex head screwdriver
- 5mm hex head screwdriver
- Special tool (provided by BEGA)
- Adjustable wrench

Overview:

LED Watts: 7.0W
 System Watts: 10.0W
 Controllability: 0-10V dimmable
 Weight: 4.9 lbs.
 Protection Class: IP65

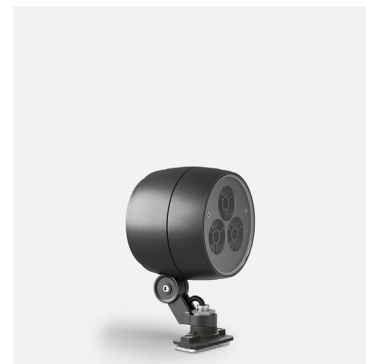


Dimensions

A: 5-3/4

B: 8-3/4

C: 4-3/4



Notice to Installer:

1. See page 2 for specific product safety warnings.
2. Fixture may be damaged if connected to conduit systems that contain water - Article 300-5G of the National Electric Code requires that "Conduits or raceways through which moisture may contact energized live parts shall be sealed or plugged at either or both ends."
3. Profile pole can support up to (8) individual floodlights, with a maximum of (2) per side.

Profile pole and 84660 floodlight installation:

1. Profile pole and profile pole floodlights will ship separately. Have floodlights ready to install, and assemble floodlights and pole together before erecting pole. Do not install pole without floodlights. See floodlight installation for additional details.
2. **CAUTION: Floodlights come with fixed length cable with pin connectors. Pin connectors are required for compatibility with terminal block. If cable length is shortened in the field, use enclosed pin terminal kit.**
3. Open top of profile pole by loosening (4) 5mm hex head screws to access floodlight wiring connection box (See Figure 1).
4. Slide floodlight into channel to desired location. Secure into place by tightening (2) 4mm hex head screws located on the floodlight mounting adaptor (See Figure 2).
5. Route floodlight cable through closest slotted hole into pole.
6. Route floodlight cable through cable gland into the wiring connection box (See Figure 3).
7. Make floodlight wiring connections in terminal block (See Figure 4).
 BLACK FLOODLIGHT WIRE TO TERMINAL BLOCK "L" (LINE VOLTAGE)
 WHITE FLOODLIGHT WIRE TO TERMINAL BLOCK "N" (NEUTRAL)
 GREEN FLOODLIGHT WIRE TO TERMINAL BLOCK "G" (GROUND)
 0-10V DIMMING (OR DALI DIMMING) IF APPLICABLE
 PURPLE FLOODLIGHT WIRE TO TERMINAL BLOCK "DIM"
 PINK FLOODLIGHT WIRE TO TERMINAL BLOCK "DIM"
- WARNING: 0-10V DIMMING IS POLARITY SENSITIVE. CONNECT ALL PURPLE WIRES TOGETHER AND ALL PINK WIRES TOGETHER. 0-10V DIMMING WILL DIM ALL FIXTURES SIMULTANEOUSLY. FOR INDIVIDUAL CONTROLLABILITY, DALI OPTION MUST BE SELECTED (IF AVAILABLE).**
8. After all floodlights are wired and secured, close wiring connection box. Tighten the (4) 5mm hex head screws evenly to ensure gasket seals correctly.
9. Floodlights can be adjusted 350° around the knuckle, and tilted -30° / +140°. Loosen the nut at the mounting adaptor or the 5mm hex head screw at the knuckle and aim accordingly. Nut at mounting adaptor must be tightened to 35Nm to secure. Knuckle set screw must be tightened to 7Nm to secure.
10. Erect pole onto anchor base. Slip pole over anchor base and aim accordingly. Secure pole to anchor base by tightening (8) 4mm set screws at base of pole.
11. Open access door at base of pole and make supply wiring connections.
 MAIN VOLTAGE SUPPLY WIRE TO BLACK POLE CABLE WIRE
 NEUTRAL (COMMON) SUPPLY WIRE TO WHITE POLE CABLE WIRE
 GREEN GROUND WIRE TO GREEN POLE CABLE WIRE
 0-10V DIMMING (OR DALI DIMMING) IF APPLICABLE
 DIM CONTROL WIRE (+) TO PURPLE POLE CABLE WIRE
 DIM CONTROL WIRE (-) TO PINK POLE CABLE WIRE.
12. Additional grounding is required - connect ground supply wire to both green luminaire wire and green grounding lug located on the din rail behind the access door in element pole.
13. Close access door.

Figure 1:



Figure 2:

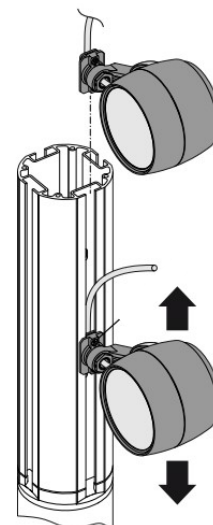


Figure 3:

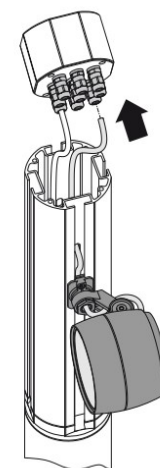
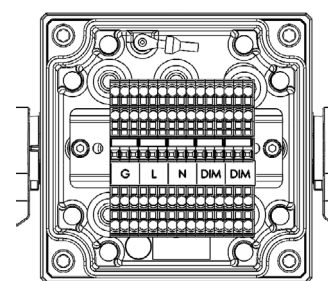


Figure 4:



Compatible Profile Poles

Please refer to the appropriate profile pole installation sheet for further instruction when applicable.

Wood profile pole - square straight	84696
Wood profile pole - square straight	84697
Wood profile pole- round straight	84698
Wood profile pole - round straight	84699
Aluminum profile pole - square straight	84700
Aluminum profile pole- square straight	84701
Aluminum profile pole - round straight	84702
Aluminum profile pole- round straight	84703

Maintenance:

Clean regularly with solvent-free cleaner removing dirt and debris. Do not use high pressure cleaners.

Replacement Parts

See label inside of fixture for LED replacement part number.

Consult factory for all other replacement components.

Product Safety Warnings:

THIS PRODUCT MUST BE INSTALLED IN ACCORDANCE WITH THE APPLICABLE INSTALLATION CODE BY A PERSON FAMILIAR WITH THE CONSTRUCTION AND OPERATION OF THE PRODUCT AND THE HAZARDS INVOLVED. SUITABLE FOR MOUNTING WITHIN 1.2 m (4 ft) OF THE GROUND. SUITABLE FOR WET LOCATIONS. MIN 60°C SUPPLY CONDUCTORS.

CE PRODUIT DOIT ÊTRE INSTALLÉ SELON LE CODE D'INSTALLATION PERTINENT, PAR UNE PERSONNE QUI CONNAÎT BIEN LE PRODUIT ET SON FONCTIONNEMENT AINSI QUE LES RISQUES INHÉRENTS. PEUT ÊTRE INSTALLÉ À MOINS DE 1,2 m (4 pi) DU SOL. CONVIENT AUX EMPLACEMENTS MOUILLÉS. LES FILS D'ALIMENTATION 60°C MIN.

Installer agrees that the prevention of accidents to its workers who handle, install, lift, or load Bega supplied products is solely installer's responsibility. In handling, lifting, or installing Bega supplied products, Installer shall comply with its own internal safety plans and guidelines and all state and federal laws, standards, ordinances, rules, regulations, codes, requirements, orders, and requirements, including those issued by local, state or federal Occupational Health and Safety agencies, concerning safety and weight limitations now in force or hereafter in effect. Installer further agrees and understands that lifting or carrying loads heavier than 50 pounds may increase the risk of injury, and any persons lifting or carrying Bega supplied products exceeding 50 pounds shall assess the risks of lifting the materials for each person and, when appropriate, use two or more people to lift or handle the material or use special lifts or mechanical means.