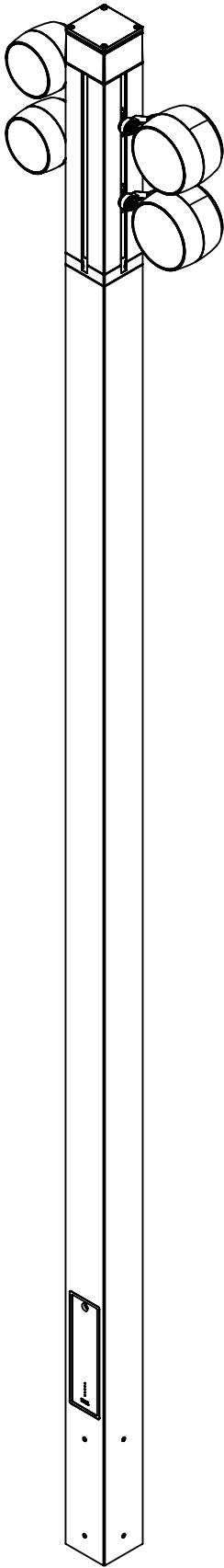
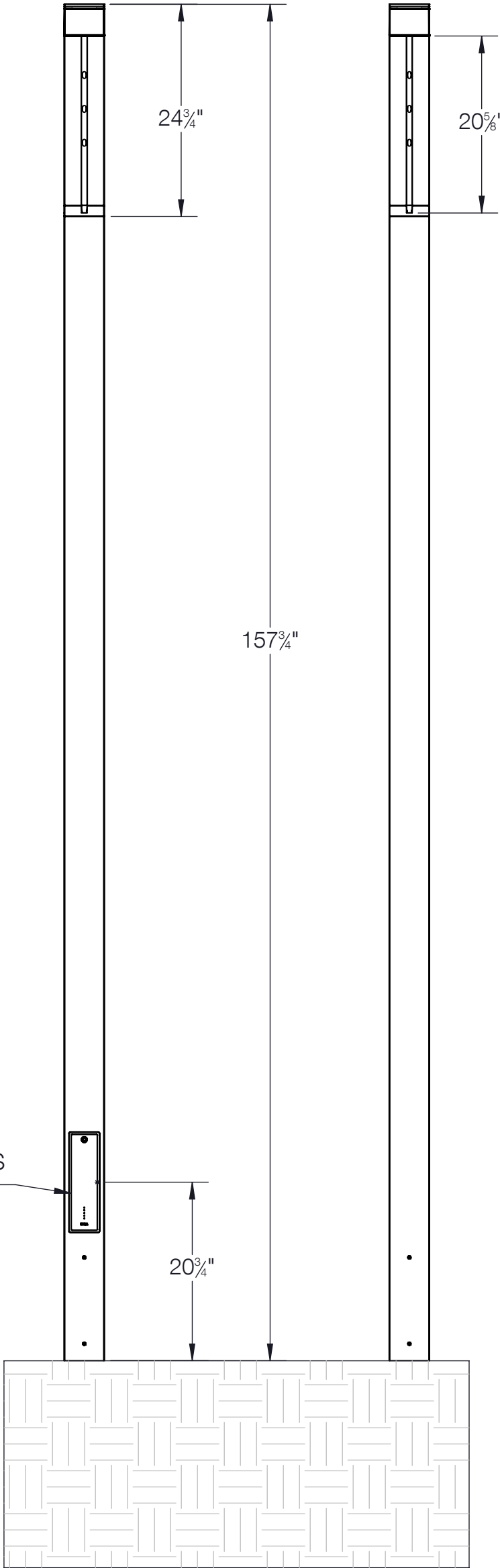
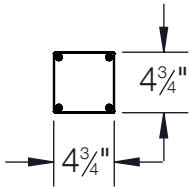


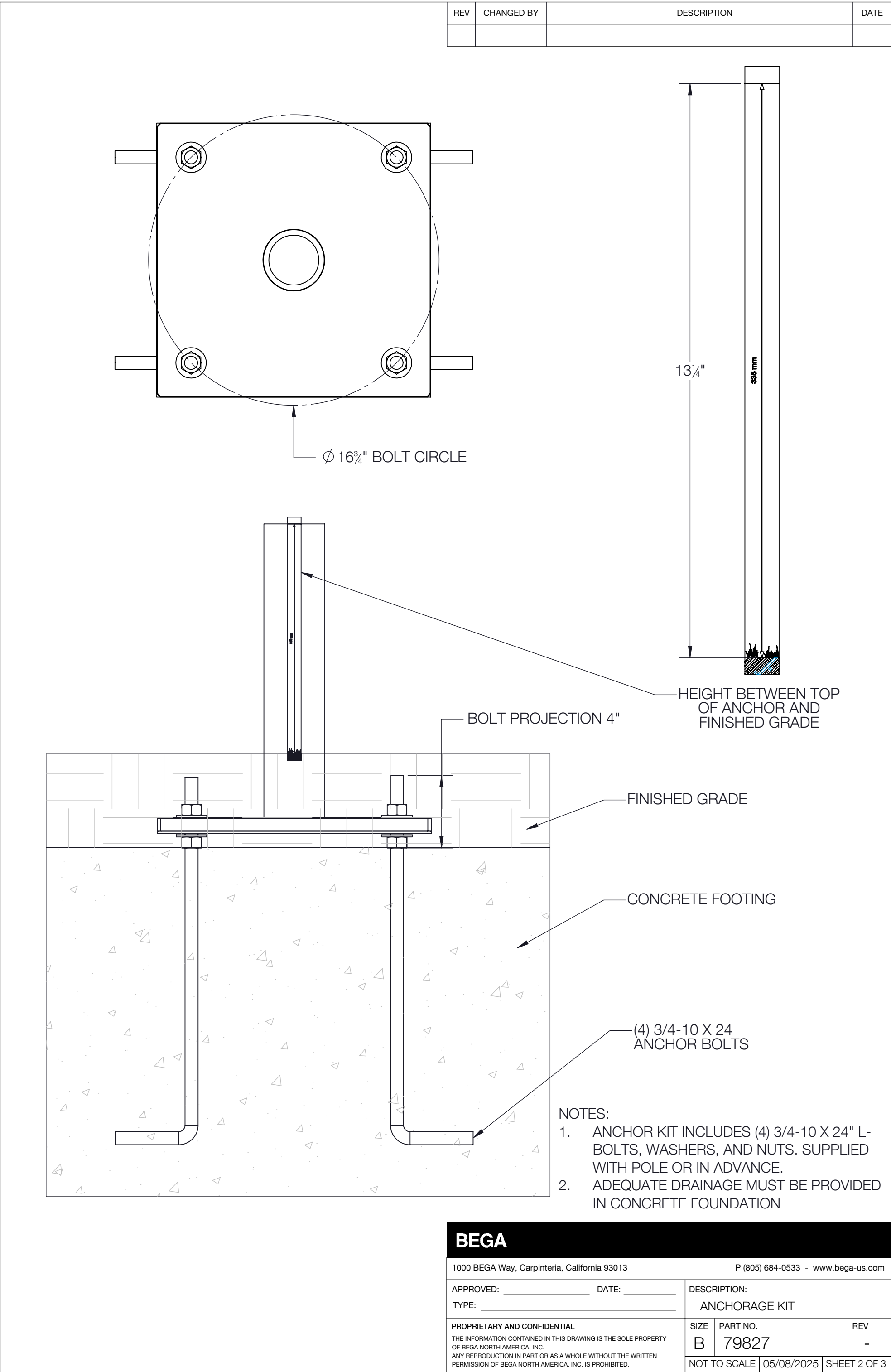
REV	CHANGED BY	DESCRIPTION	DATE



SHOWN WITH PROFILE POLE
FLOODLIGHTS - NOT INCLUDED. SEE
WEBSITE FOR COMPATIBLE OPTIONS

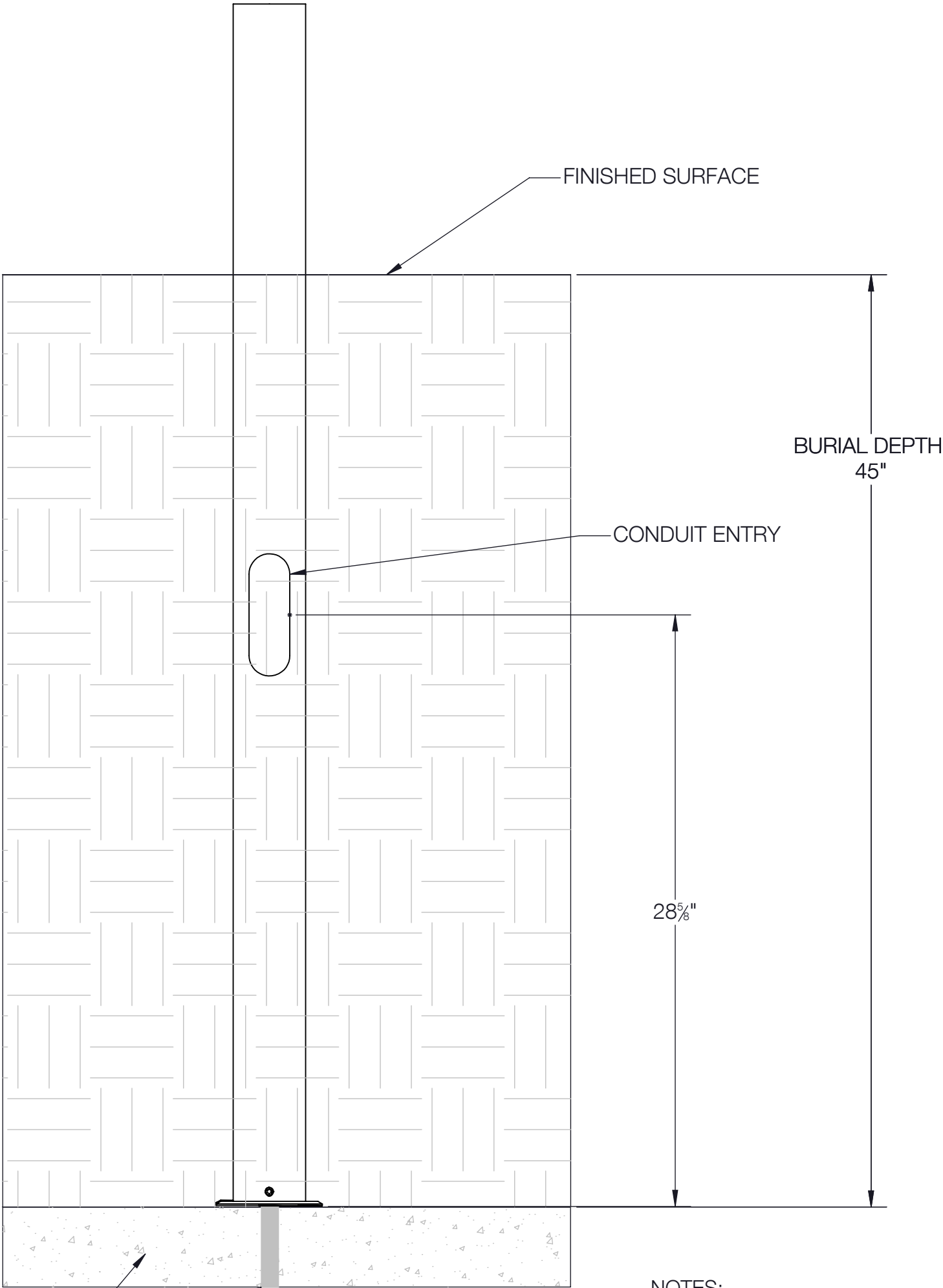
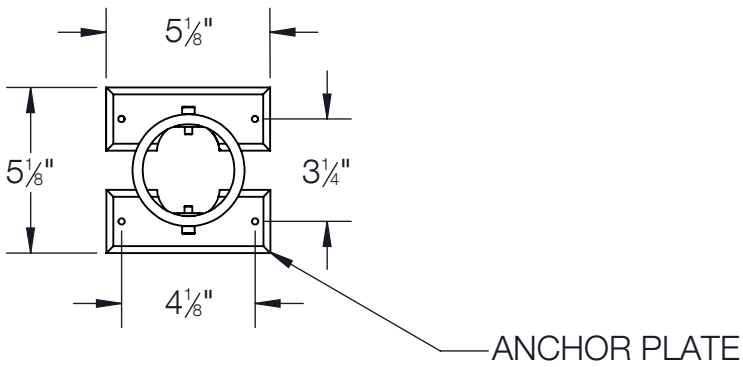
- NOTES:
- POLE FOR USE WITH PROFILE POLE FLOODLIGHTS ONLY - SEE WEBSITE FOR COMPATIBLE OPTIONS
 - MAXIMUM OF (2) FLOODLIGHTS PER SIDE, UP TO 8 FLOODLIGHTS PER POLE
 - SUITABLE FOR INSTALLATION IN WIND ZONES WITH A MAXIMUM WIND SPEED UP TO 100 MPH PER EN 60598.
 - INCLUDES B79827 - ANCHOR KIT (SEE SHEET 2)
 - OPTIONAL 71207 - DIRECT BURIAL ANCHOR KIT (SEE SHEET 3)

BEGA				
1000 BEGA Way, Carpinteria, California 93013			P (805) 684-0533 - www.bega-us.com	
APPROVED: _____		DATE: _____		DESCRIPTION: ALUMINUM PROFILE POLE - SQUARE STRAIGHT
TYPE: _____				
PROPRIETARY AND CONFIDENTIAL		SIZE	PART NO.	REV
THE INFORMATION CONTAINED IN THIS DRAWING IS THE SOLE PROPERTY OF BEGA NORTH AMERICA, INC.		B	84700	-
ANY REPRODUCTION IN PART OR AS A WHOLE WITHOUT THE WRITTEN PERMISSION OF BEGA NORTH AMERICA, INC. IS PROHIBITED.		NOT TO SCALE	05/08/2025	SHEET 1 OF 3



BEGA			
1000 BEGA Way, Carpinteria, California 93013		P (805) 684-0533 - www.bega-us.com	
APPROVED: _____ DATE: _____		DESCRIPTION: ANCHORAGE KIT	
TYPE: _____		SIZE B	PART NO. 79827
PROPRIETARY AND CONFIDENTIAL		NOT TO SCALE	REV -
THE INFORMATION CONTAINED IN THIS DRAWING IS THE SOLE PROPERTY OF BEGA NORTH AMERICA, INC. ANY REPRODUCTION IN PART OR AS A WHOLE WITHOUT THE WRITTEN PERMISSION OF BEGA NORTH AMERICA, INC. IS PROHIBITED.		05/08/2025	SHEET 2 OF 3

REV	CHANGED BY	DESCRIPTION	DATE



- NOTES:
- OPTIONAL DIRECT BURIAL ANCHOR KIT - SPECIFY AT TIME OF ORDER

BEGA			
1000 BEGA Way, Carpinteria, California 93013		P (805) 684-0533 - www.bega-us.com	
APPROVED: _____ DATE: _____		DESCRIPTION: DIRECT BURIAL ANCHORAGE KIT	
TYPE: _____			
PROPRIETARY AND CONFIDENTIAL THE INFORMATION CONTAINED IN THIS DRAWING IS THE SOLE PROPERTY OF BEGA NORTH AMERICA, INC. ANY REPRODUCTION IN PART OR AS A WHOLE WITHOUT THE WRITTEN PERMISSION OF BEGA NORTH AMERICA, INC. IS PROHIBITED.		SIZE B	PART NO. 71207
		REV -	
NOT TO SCALE		05/08/2025	SHEET 3 OF 3