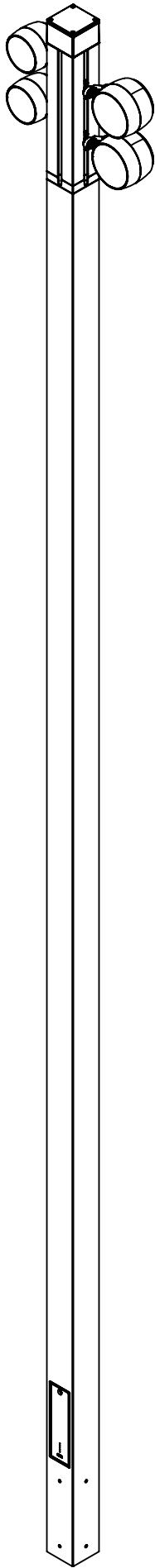
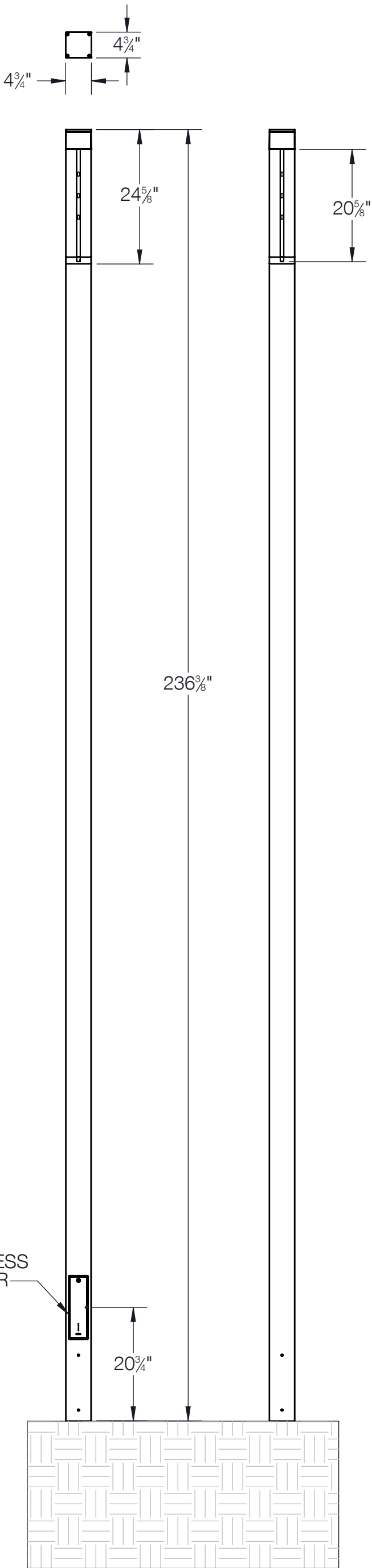


REV	CHANGED BY	DESCRIPTION	DATE

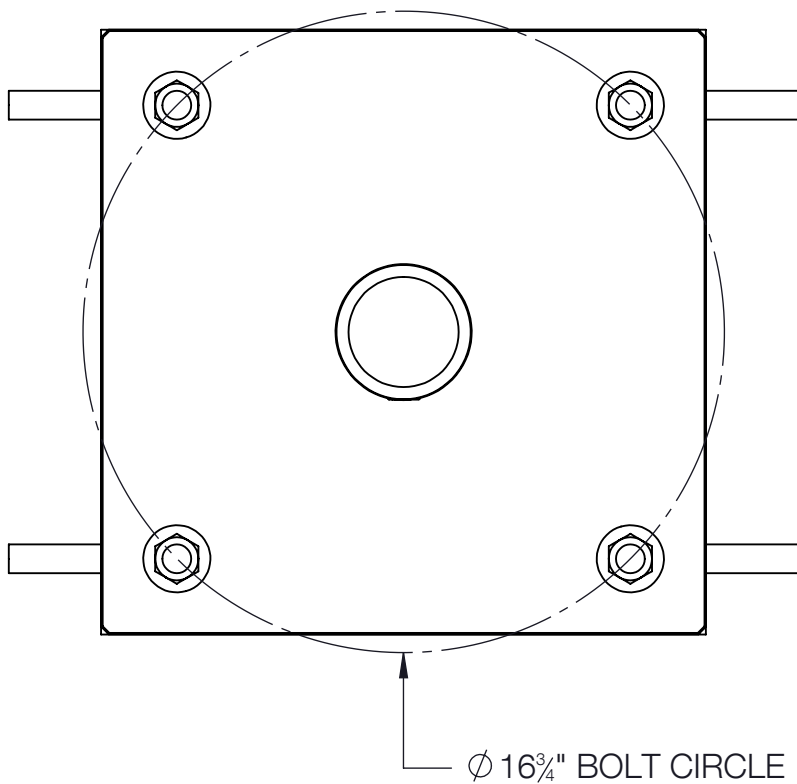


SHOWN WITH PROFILE POLE  
FLOODLIGHTS - NOT INCLUDED. SEE  
WEBSITE FOR COMPATIBLE OPTIONS

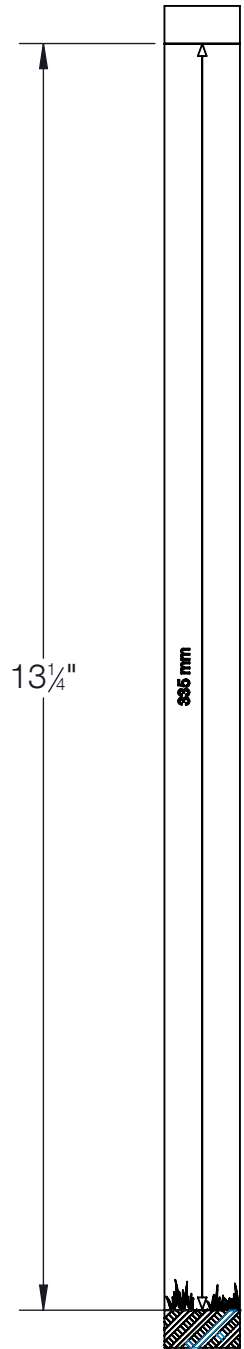
- NOTES:
- POLE FOR USE WITH PROFILE POLE FLOODLIGHTS ONLY - SEE WEBSITE FOR COMPATIBLE OPTIONS
  - MAXIMUM OF (2) FLOODLIGHTS PER SIDE, UP TO 8 FLOODLIGHTS PER POLE
  - SUITABLE FOR INSTALLATION IN WIND ZONES WITH A MAXIMUM WIND SPEED UP TO 100 MPH PER EN 60598.
  - INCLUDES B79827 - ANCHOR KIT (SEE SHEET 2)
  - OPTIONAL 71207 - DIRECT BURIAL ANCHOR KIT (SEE SHEET 3)

BEGA			
1000 BEGA Way, Carpinteria, California 93013		P (805) 684-0533 - <a href="http://www.bega-us.com">www.bega-us.com</a>	
APPROVED: _____ DATE: _____		DESCRIPTION: ALUMINUM PROFILE POLE - SQUARE STRAIGHT	
TYPE: _____			
PROPRIETARY AND CONFIDENTIAL THE INFORMATION CONTAINED IN THIS DRAWING IS THE SOLE PROPERTY OF BEGA NORTH AMERICA, INC. ANY REPRODUCTION IN PART OR AS A WHOLE WITHOUT THE WRITTEN PERMISSION OF BEGA NORTH AMERICA, INC. IS PROHIBITED.		SIZE B	PART NO. 84701
		REV -	
		NOT TO SCALE	05/13/2025 SHEET 1 OF 3

REV	CHANGED BY	DESCRIPTION	DATE



Ø 16<sup>3</sup>/<sub>4</sub>" BOLT CIRCLE



13<sup>1</sup>/<sub>4</sub>"

335 mm

HEIGHT BETWEEN TOP OF ANCHOR AND FINISHED GRADE

BOLT PROJECTION 4"

FINISHED GRADE

CONCRETE FOOTING

(4) 3/4-10 X 24 ANCHOR BOLTS

- NOTES:
- ANCHOR KIT INCLUDES (4) 3/4-10 X 24" L-BOLTS, WASHERS, AND NUTS. SUPPLIED WITH POLE OR IN ADVANCE.
  - ADEQUATE DRAINAGE MUST BE PROVIDED IN CONCRETE FOUNDATION

**BEGA**

1000 BEGA Way, Carpinteria, California 93013

P (805) 684-0533 - [www.bega-us.com](http://www.bega-us.com)

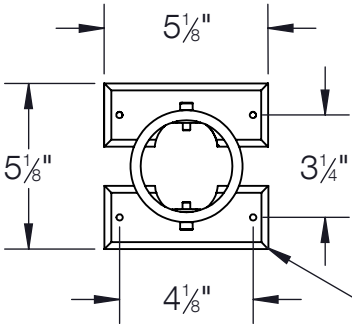
APPROVED: \_\_\_\_\_ DATE: \_\_\_\_\_  
TYPE: \_\_\_\_\_

DESCRIPTION:  
ANCHORAGE KIT

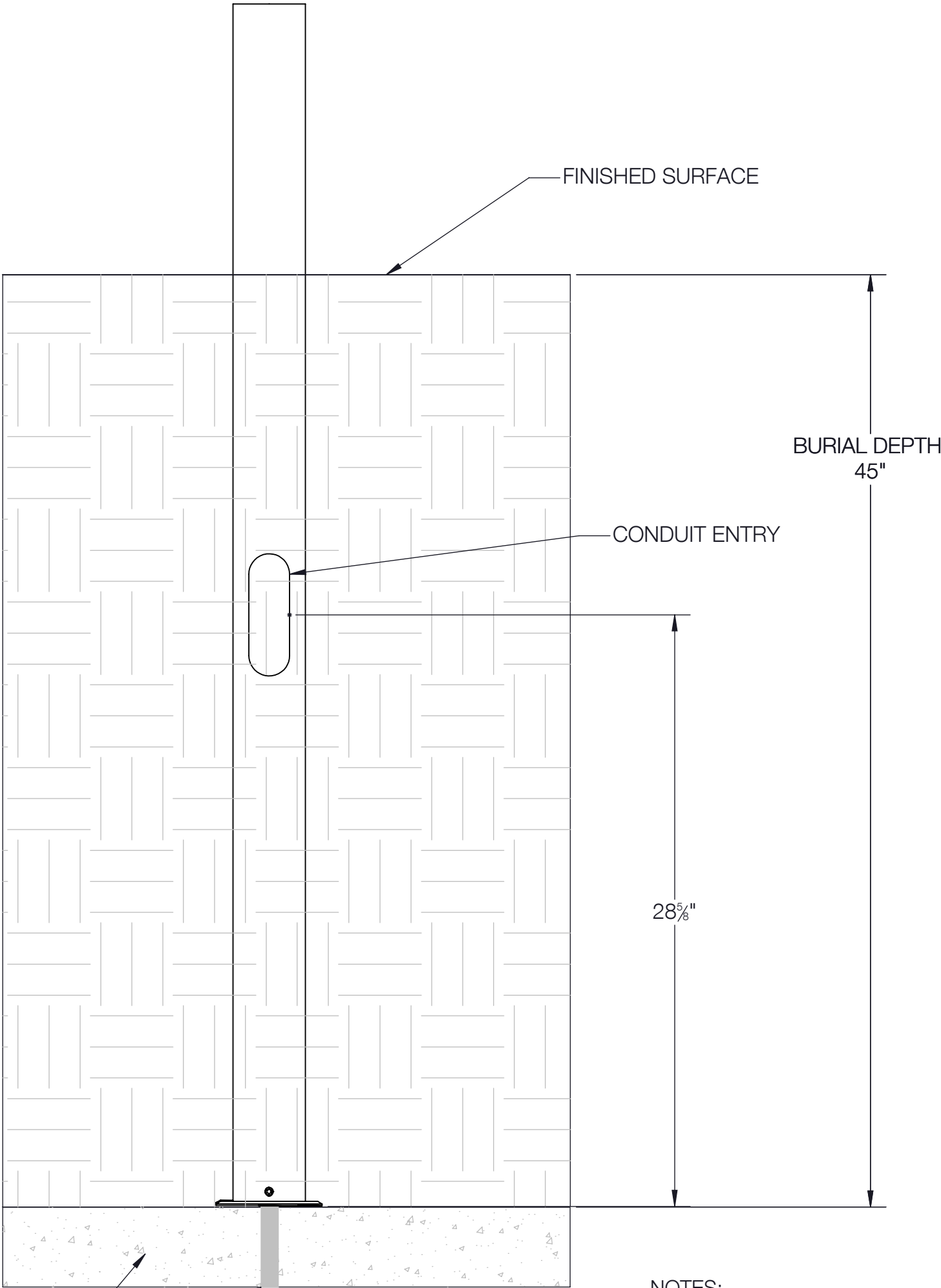
**PROPRIETARY AND CONFIDENTIAL**  
THE INFORMATION CONTAINED IN THIS DRAWING IS THE SOLE PROPERTY OF BEGA NORTH AMERICA, INC.  
ANY REPRODUCTION IN PART OR AS A WHOLE WITHOUT THE WRITTEN PERMISSION OF BEGA NORTH AMERICA, INC. IS PROHIBITED.

SIZE	PART NO.	REV
B	79827	-
NOT TO SCALE	05/13/2025	SHEET 2 OF 3

REV	CHANGED BY	DESCRIPTION	DATE



ANCHOR PLATE



SUB-BASE

DRAINAGE

- NOTES:
- OPTIONAL DIRECT BURIAL ANCHOR KIT - SPECIFY AT TIME OF ORDER

BEGA			
1000 BEGA Way, Carpinteria, California 93013		P (805) 684-0533 - <a href="http://www.bega-us.com">www.bega-us.com</a>	
APPROVED: _____ DATE: _____		DESCRIPTION: DIRECT BURIAL ANCHORAGE KIT	
TYPE: _____			
PROPRIETARY AND CONFIDENTIAL THE INFORMATION CONTAINED IN THIS DRAWING IS THE SOLE PROPERTY OF BEGA NORTH AMERICA, INC. ANY REPRODUCTION IN PART OR AS A WHOLE WITHOUT THE WRITTEN PERMISSION OF BEGA NORTH AMERICA, INC. IS PROHIBITED.		SIZE B	PART NO. 71207
		NOT TO SCALE	REV -
		05/13/2025	SHEET 3 OF 3