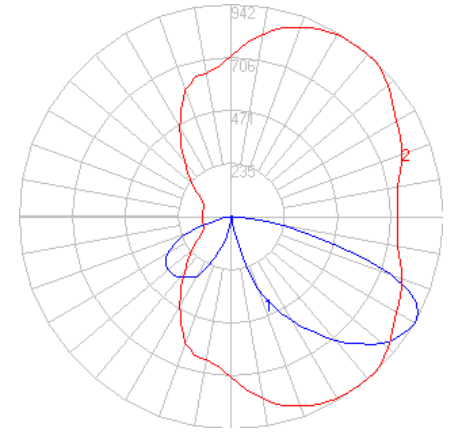


BEGA

File: 84748K4_BEGA_IES.ies

TEST: BE_84748K4
 TEST LAB: BEGA
 DATE: 09/01/2020
 LUMINAIRE: 84 748K4
 LAMP: 19.5W LED



Characteristics

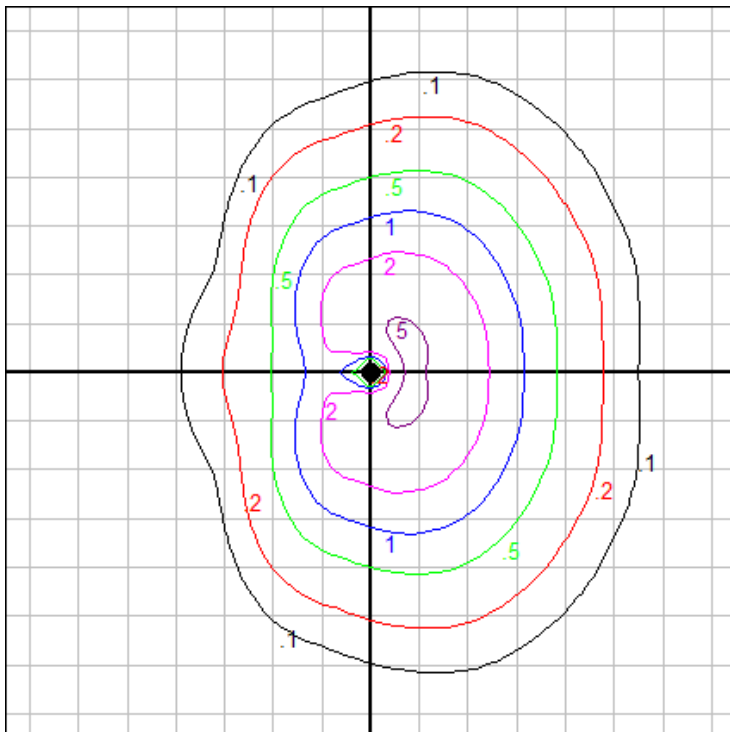
IES Classification	Type IV
Longitudinal Classification	Short
Lumens Per Lamp	N.A. (absolute)
Total Lamp Lumens	N.A. (absolute)
Luminaire Lumens	2358
Downward Total Efficiency	N.A.
Total Luminaire Efficiency	N.A.
Luminaire Efficacy Rating (LER)	98
Total Luminaire Watts	24
Ballast Factor	1.00
Upward Waste Light Ratio	0.00
Max. Cd.	941.9 (310H, 60V)
Max. Cd. (<90 Vert.)	941.9 (310H, 60V)
Max. Cd. (At 90 Deg. Vert.)	6.8 (0.3%Lum)
Max. Cd. (80 to <90 Deg. Vert.)	261.3 (11.1%Lum)
Cutoff Classification (deprecated)	N.A. (absolute)

Lum. Classification System (LCS)

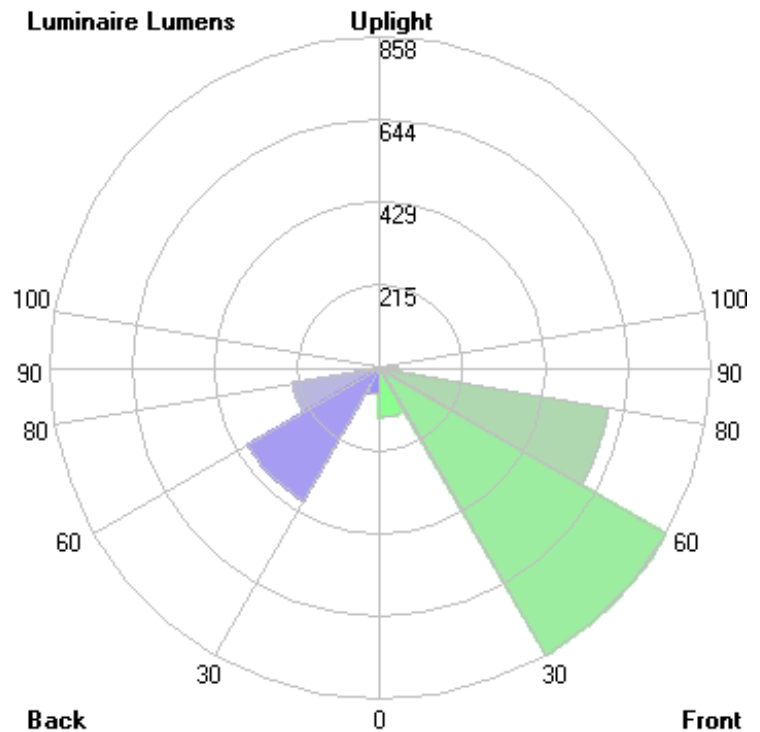
LCS Zone	Lumens	%Lamp	%Lum
FL (0-30)	128.6	N.A.	5.5
FM (30-60)	858.3	N.A.	36.4
FH (60-80)	603.7	N.A.	25.6
FVH (80-90)	46.5	N.A.	2.0
BL (0-30)	68.4	N.A.	2.9
BM (30-60)	397.0	N.A.	16.8
BH (60-80)	228.9	N.A.	9.7
BVH (80-90)	19.4	N.A.	0.8
UL (90-100)	3.7	N.A.	0.2
UH (100-180)	3.8	N.A.	0.2
Total	2358.3	N.A.	100.0

BUG Rating B1-U0*-G1

*Fixture has measured rating of U1 due to testing above 90 degrees and stray light from reflection off of the fixture body. There is no significant uplight (<0.5%), and it has therefore been assigned a value of U0. Consult factory for more information.



Grid Spacing: 5 ft.

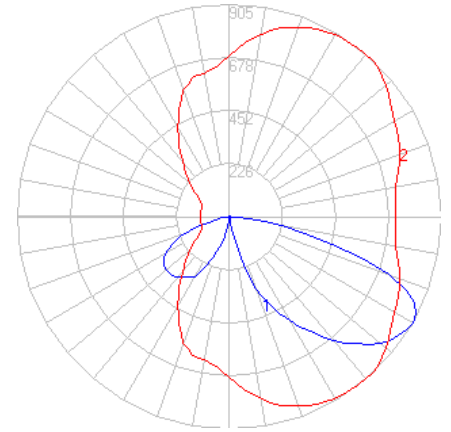


In the interest of product improvement, BEGA reserves the right to make technical changes without notice.

BEGA

File: 84748K35_BEGA_IES.ies

TEST: BE_84748K4
 TEST LAB: BEGA
 DATE: 09/01/2020
 LUMINAIRE: 84 748K35
 LAMP: 19.5W LED



Characteristics

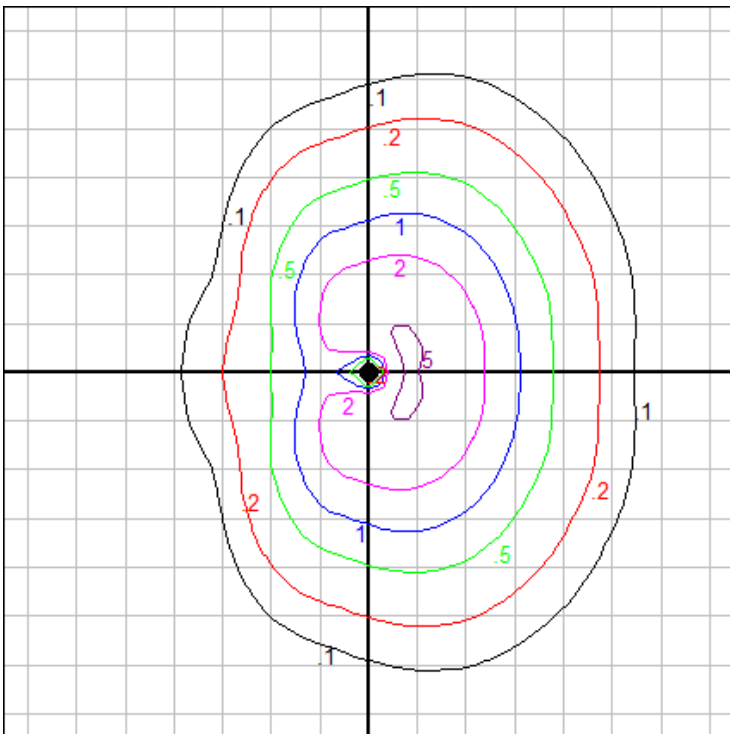
IES Classification	Type IV
Longitudinal Classification	Short
Lumens Per Lamp	N.A. (absolute)
Total Lamp Lumens	N.A. (absolute)
Luminaire Lumens	2265
Downward Total Efficiency	N.A.
Total Luminaire Efficiency	N.A.
Luminaire Efficacy Rating (LER)	94
Total Luminaire Watts	24
Ballast Factor	1.00
Upward Waste Light Ratio	0.00
Max. Cd.	904.601 (310H, 60V)
Max. Cd. (<90 Vert.)	904.601 (310H, 60V)
Max. Cd. (At 90 Deg. Vert.)	6.531 (0.3%Lum)
Max. Cd. (80 to <90 Deg. Vert.)	250.953 (11.1%Lum)
Cutoff Classification (deprecated)	N.A. (absolute)

Lum. Classification System (LCS)

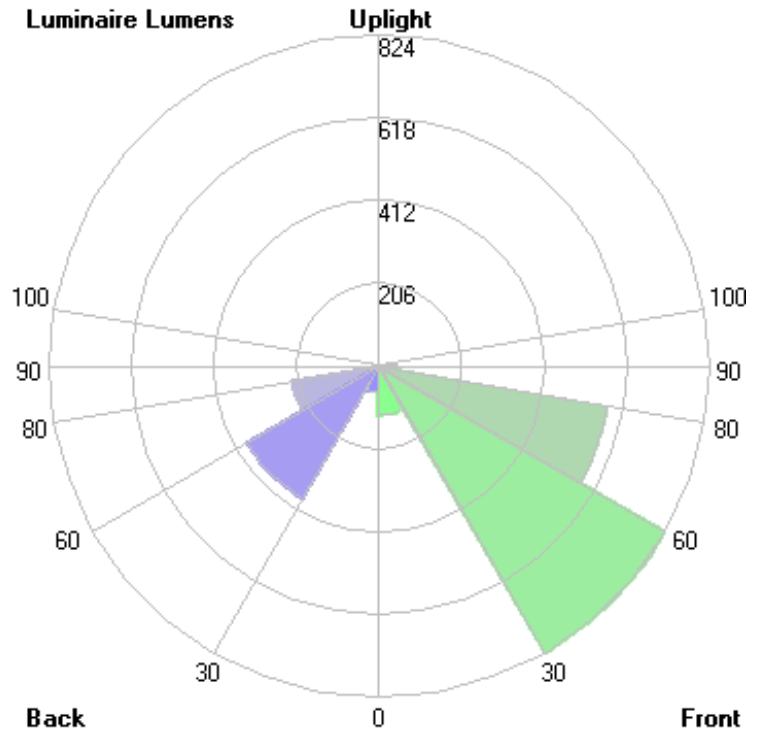
LCS Zone	Lumens	%Lamp	%Lum
FL (0-30)	123.5	N.A.	5.5
FM (30-60)	824.3	N.A.	36.4
FH (60-80)	579.8	N.A.	25.6
FVH (80-90)	44.7	N.A.	2.0
BL (0-30)	65.7	N.A.	2.9
BM (30-60)	381.3	N.A.	16.8
BH (60-80)	219.8	N.A.	9.7
BVH (80-90)	18.6	N.A.	0.8
UL (90-100)	3.5	N.A.	0.2
UH (100-180)	3.6	N.A.	0.2
Total	2264.8	N.A.	100.0

BUG Rating B1-U0*-G1

*Fixture has measured rating of U1 due to testing above 90 degrees and stray light from reflection off of the fixture body. There is no significant uplight (<0.5%), and it has therefore been assigned a value of U0. Consult factory for more information.



Grid Spacing: 5 ft.

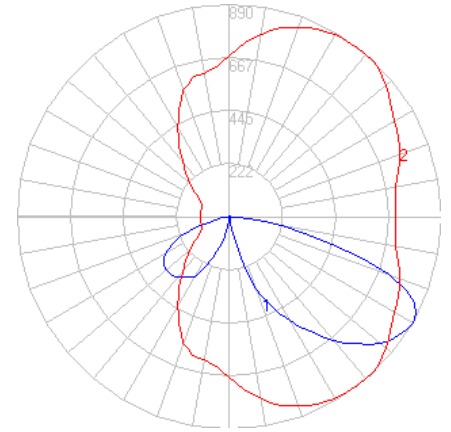


In the interest of product improvement, BEGA reserves the right to make technical changes without notice.

BEGA

File: 84748K3_BEGA_IES.ies

TEST: BE_84748K4
 TEST LAB: BEGA
 DATE: 09/01/2020
 LUMINAIRE: 84 748K3
 LAMP: 19.5W LED



Characteristics

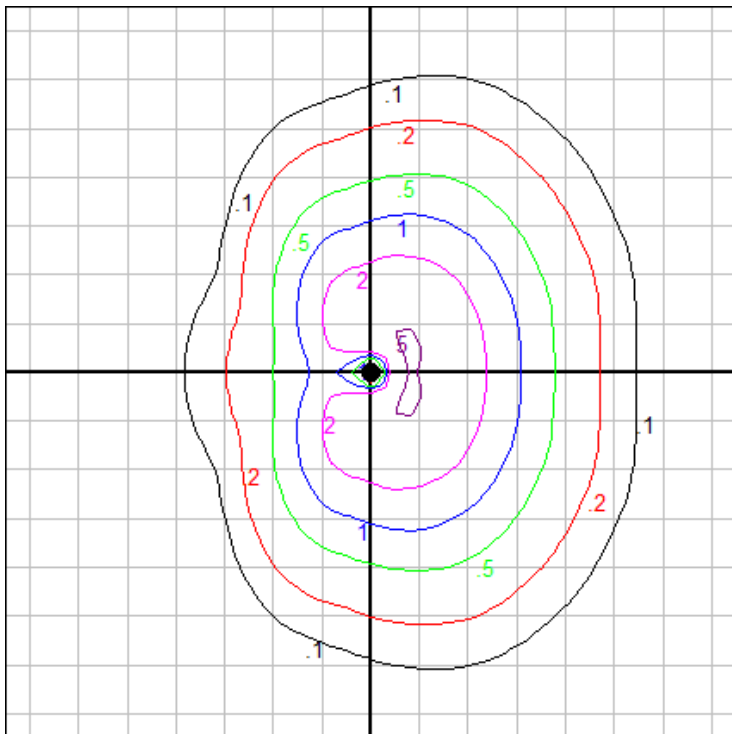
IES Classification	Type IV
Longitudinal Classification	Short
Lumens Per Lamp	N.A. (absolute)
Total Lamp Lumens	N.A. (absolute)
Luminaire Lumens	2228
Downward Total Efficiency	N.A.
Total Luminaire Efficiency	N.A.
Luminaire Efficacy Rating (LER)	93
Total Luminaire Watts	24
Ballast Factor	1.00
Upward Waste Light Ratio	0.00
Max. Cd.	889.892 (310H, 60V)
Max. Cd. (<90 Vert.)	889.892 (310H, 60V)
Max. Cd. (At 90 Deg. Vert.)	6.425 (0.3%Lum)
Max. Cd. (80 to <90 Deg. Vert.)	246.872 (11.1%Lum)
Cutoff Classification (deprecated)	N.A. (absolute)

Lum. Classification System (LCS)

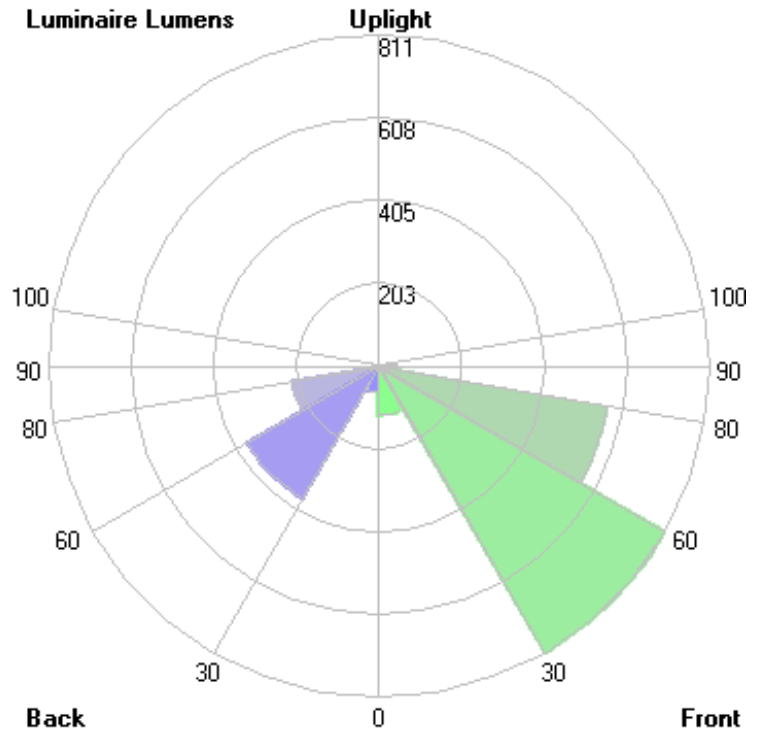
LCS Zone	Lumens	%Lamp	%Lum
FL (0-30)	121.5	N.A.	5.5
FM (30-60)	810.9	N.A.	36.4
FH (60-80)	570.4	N.A.	25.6
FVH (80-90)	44.0	N.A.	2.0
BL (0-30)	64.6	N.A.	2.9
BM (30-60)	375.1	N.A.	16.8
BH (60-80)	216.3	N.A.	9.7
BVH (80-90)	18.3	N.A.	0.8
UL (90-100)	3.4	N.A.	0.2
UH (100-180)	3.5	N.A.	0.2
Total	2228.0	N.A.	100.0

BUG Rating B1-U0*-G1

*Fixture has measured rating of U1 due to testing above 90 degrees and stray light from reflection off of the fixture body. There is no significant uplight (<0.5%), and it has therefore been assigned a value of U0. Consult factory for more information.



Grid Spacing: 5 ft.

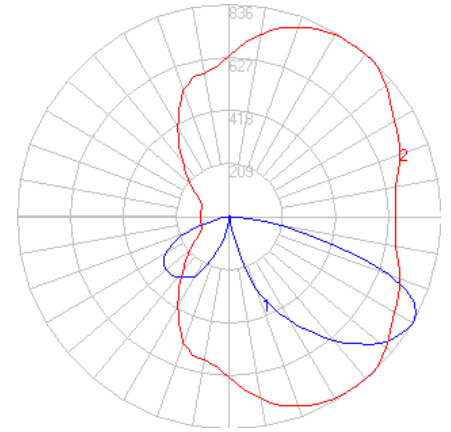


In the interest of product improvement, BEGA reserves the right to make technical changes without notice.

BEGA

File: 84748K27_BEGA_IES.ies

TEST: BE_84748K4
 TEST LAB: BEGA
 DATE: 09/01/2020
 LUMINAIRE: 84 748K27
 LAMP: 19.5W LED



Characteristics

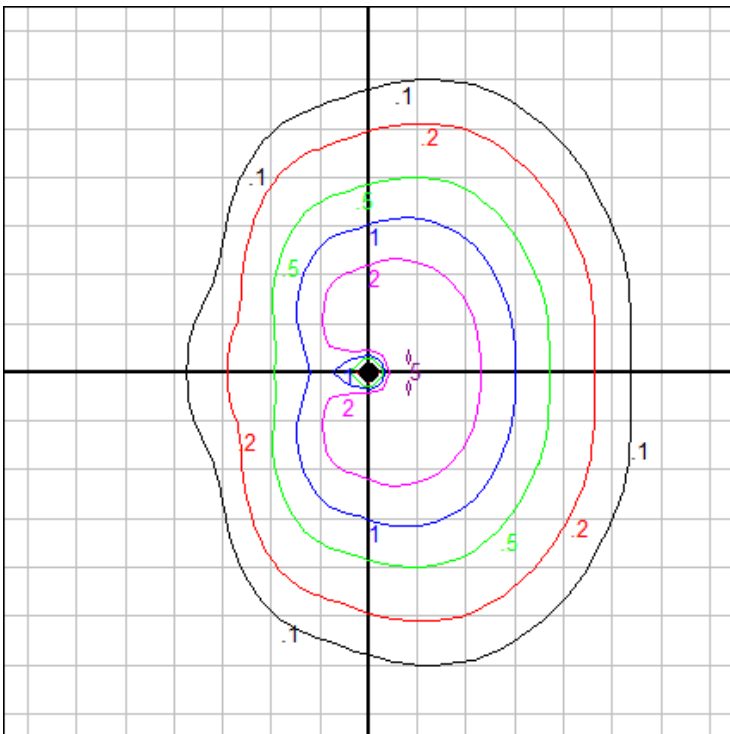
IES Classification	Type IV
Longitudinal Classification	Short
Lumens Per Lamp	N.A. (absolute)
Total Lamp Lumens	N.A. (absolute)
Luminaire Lumens	2093
Downward Total Efficiency	N.A.
Total Luminaire Efficiency	N.A.
Luminaire Efficacy Rating (LER)	87
Total Luminaire Watts	24
Ballast Factor	1.00
Upward Waste Light Ratio	0.00
Max. Cd.	835.808 (310H, 60V)
Max. Cd. (<90 Vert.)	835.808 (310H, 60V)
Max. Cd. (At 90 Deg. Vert.)	6.034 (0.3%Lum)
Max. Cd. (80 to <90 Deg. Vert.)	231.869 (11.1%Lum)
Cutoff Classification (deprecated)	N.A. (absolute)

Lum. Classification System (LCS)

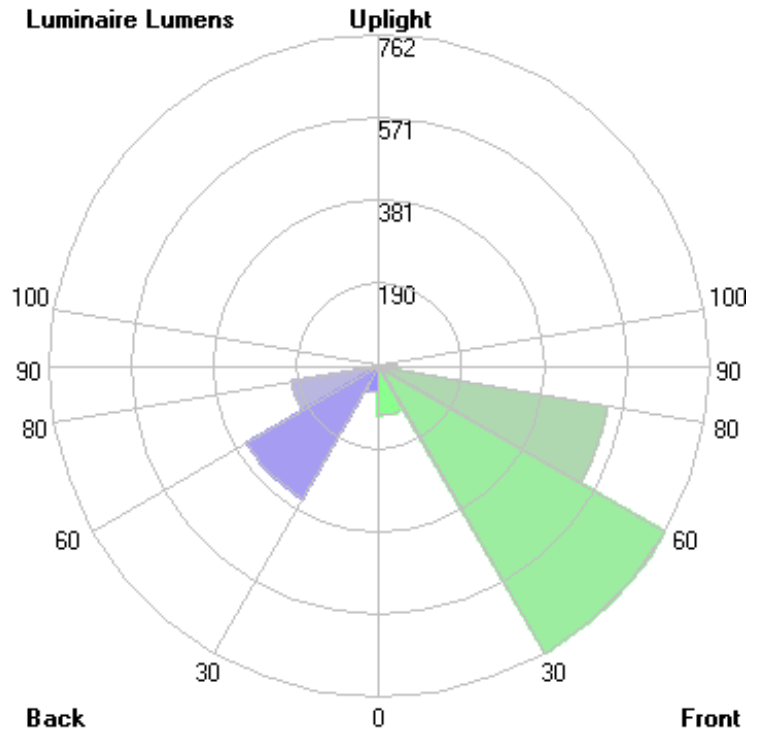
LCS Zone	Lumens	%Lamp	%Lum
FL (0-30)	114.1	N.A.	5.5
FM (30-60)	761.6	N.A.	36.4
FH (60-80)	535.7	N.A.	25.6
FVH (80-90)	41.3	N.A.	2.0
BL (0-30)	60.7	N.A.	2.9
BM (30-60)	352.3	N.A.	16.8
BH (60-80)	203.1	N.A.	9.7
BVH (80-90)	17.2	N.A.	0.8
UL (90-100)	3.2	N.A.	0.2
UH (100-180)	3.3	N.A.	0.2
Total	2092.5	N.A.	100.0

BUG Rating B1-U0*-G1

*Fixture has measured rating of U1 due to testing above 90 degrees and stray light from reflection off of the fixture body. There is no significant uplight (<0.5%), and it has therefore been assigned a value of U0. Consult factory for more information.



Grid Spacing: 5 ft.



In the interest of product improvement, BEGA reserves the right to make technical changes without notice.