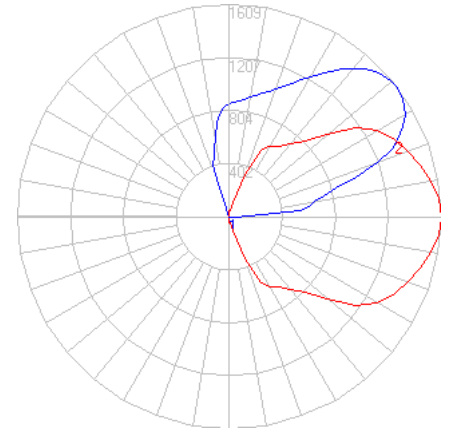


BEGA

File: 84758K4_BEGA_IES.ies

TEST: BE_84758K4
 TEST LAB: BEGA
 DATE: 01/07/2021
 LUMINAIRE: 84758K4
 LAMP: 24.1W LED

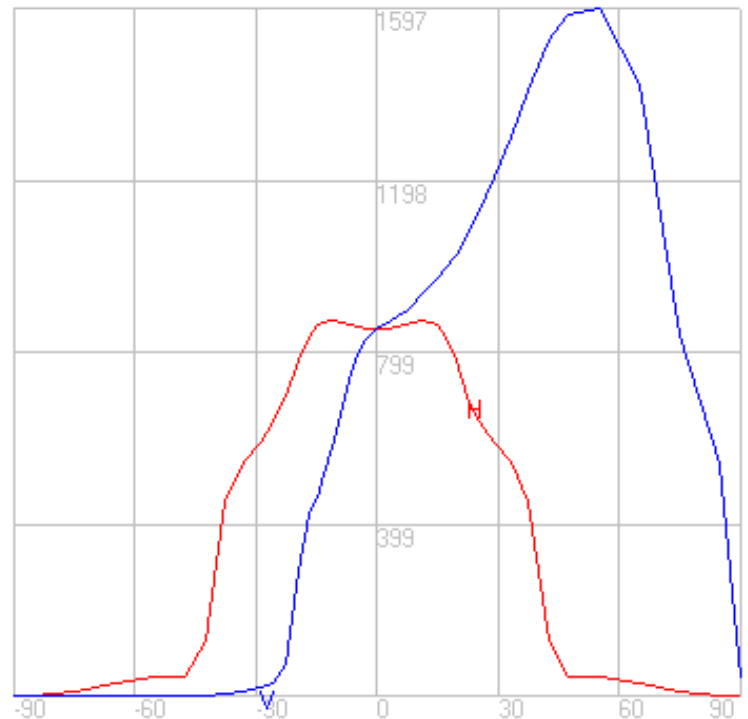
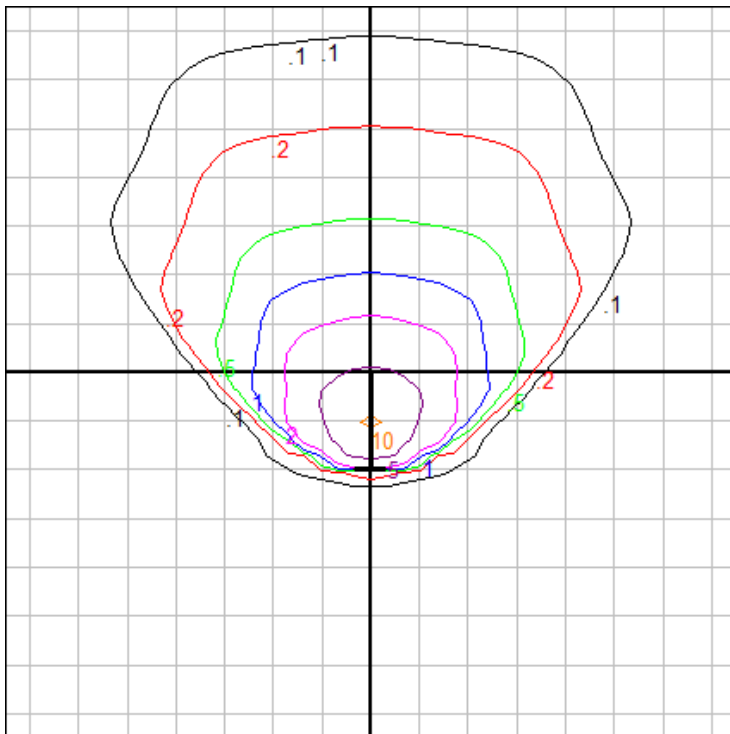


Characteristics

NEMA Type	5 H x 6 V
Maximum Candela	1597.208
Maximum Candela Angle	0 H 55 V
Horizontal Beam Angle (50%)	62.3
Vertical Beam Angle (50%)	81.1
Horizontal Field Angle (10%)	98.3
Vertical Field Angle (10%)	110.1
Lumens Per Lamp	N.A. (absolute)
Total Lamp Lumens	N.A. (absolute)
Beam Lumens	1524
Beam Efficiency	N.A.
Field Lumens	2155
Field Efficiency	N.A.
Spill Lumens	60
Luminaire Lumens	2215
Total Efficiency	N.A.
Total Luminaire Watts	29
Ballast Factor	1.00

Zonal Lumen Summary

Zone	Lumens
0-10	0.00
10-20	0.00
20-30	0.00
30-40	0.00
40-50	0.00
50-60	0.00
60-70	0.00
70-80	0.45
80-90	4.95
90-100	62.21
100-110	173.06
110-120	292.95
120-130	369.56
130-140	384.50
140-150	347.34
150-160	291.71
160-170	215.15
170-180	79.77



Fixture Setback: 10 ft.

Grid Spacing: 5 ft

In the interest of product improvement, BEGA reserves the right to make technical changes without notice.

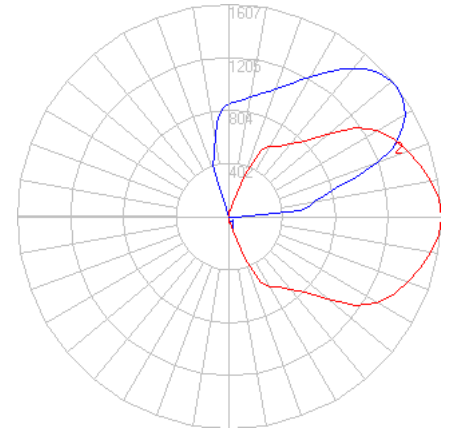
BEGA 1000 Bega Way, Carpinteria, CA 93013 (805)684-0533 Fax (805)566-9474 www.bega-us.com © Copyright BEGA-US 2026

4/9/2026

BEGA

File: 84758K35_BEGA_IES.ies

TEST: BE_84758K4
 TEST LAB: BEGA
 DATE: 01/07/2021
 LUMINAIRE: 84758K35
 LAMP: 24.1W LED

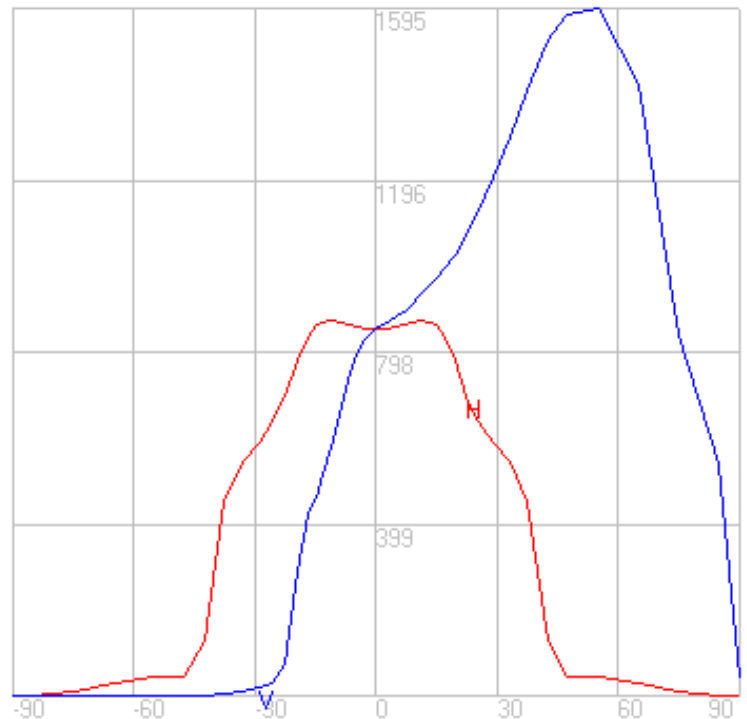
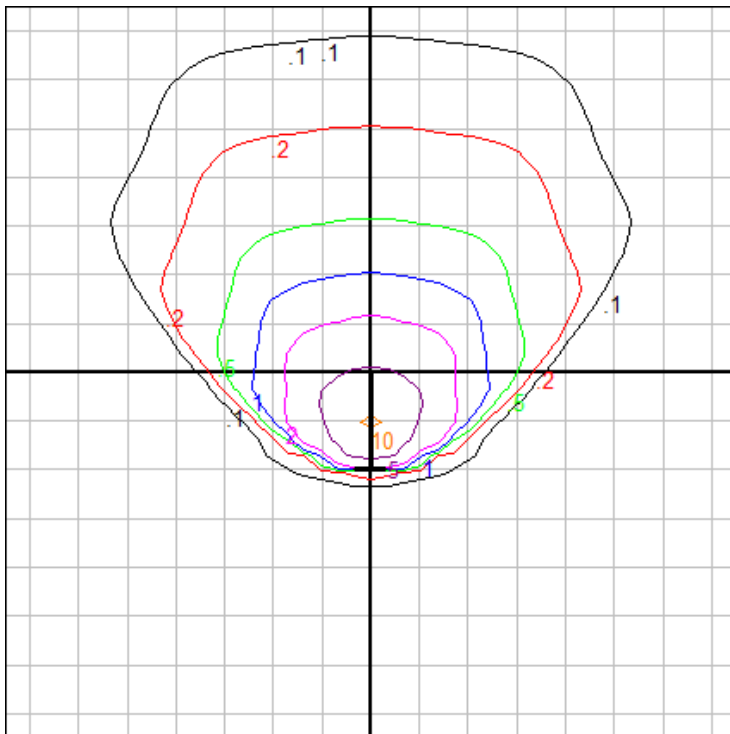


Characteristics

NEMA Type	5 H x 6 V
Maximum Candela	1595.325
Maximum Candela Angle	0 H 55 V
Horizontal Beam Angle (50%)	62.3
Vertical Beam Angle (50%)	81.1
Horizontal Field Angle (10%)	98.3
Vertical Field Angle (10%)	110.1
Lumens Per Lamp	N.A. (absolute)
Total Lamp Lumens	N.A. (absolute)
Beam Lumens	1523
Beam Efficiency	N.A.
Field Lumens	2153
Field Efficiency	N.A.
Spill Lumens	60
Luminaire Lumens	2212
Total Efficiency	N.A.
Total Luminaire Watts	29
Ballast Factor	1.00

Zonal Lumen Summary

Zone	Lumens
0-10	0.00
10-20	0.00
20-30	0.00
30-40	0.00
40-50	0.00
50-60	0.00
60-70	0.00
70-80	0.45
80-90	4.94
90-100	62.14
100-110	172.86
110-120	292.61
120-130	369.12
130-140	384.05
140-150	346.93
150-160	291.36
160-170	214.90
170-180	79.68



Fixture Setback: 10 ft.

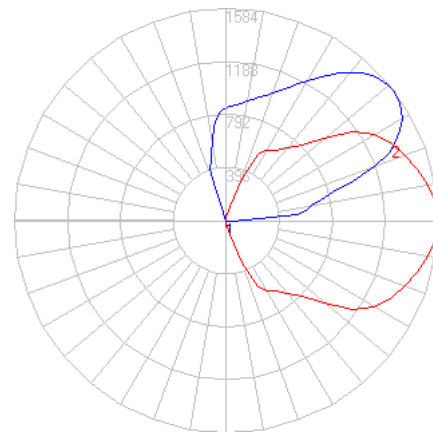
Grid Spacing: 5 ft.

In the interest of product improvement, BEGA reserves the right to make technical changes without notice.

BEGA

File: 84758K3_BEGA_IES.ies

TEST: BE_84758K4
 TEST LAB: BEGA
 DATE: 01/07/2021
 LUMINAIRE: 84758K3
 LAMP: 24.1W LED

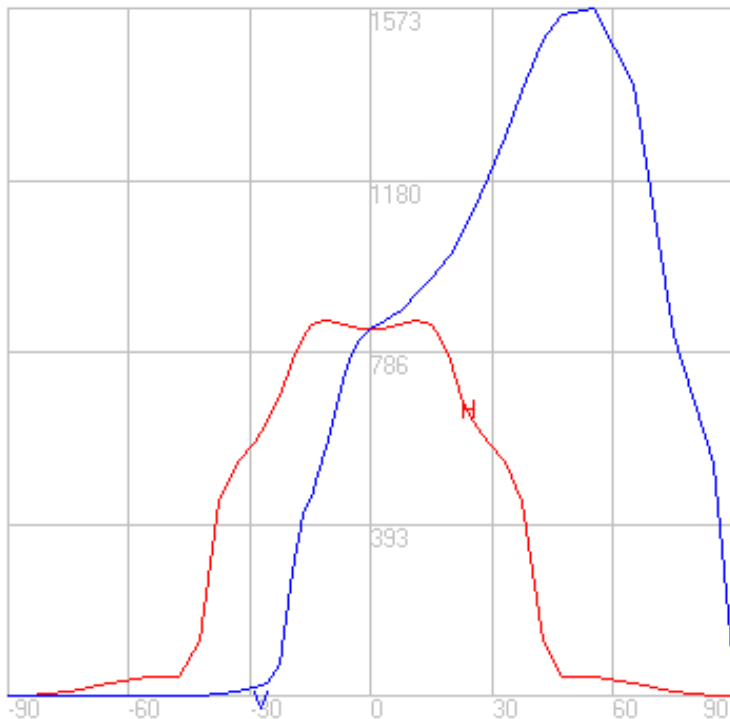
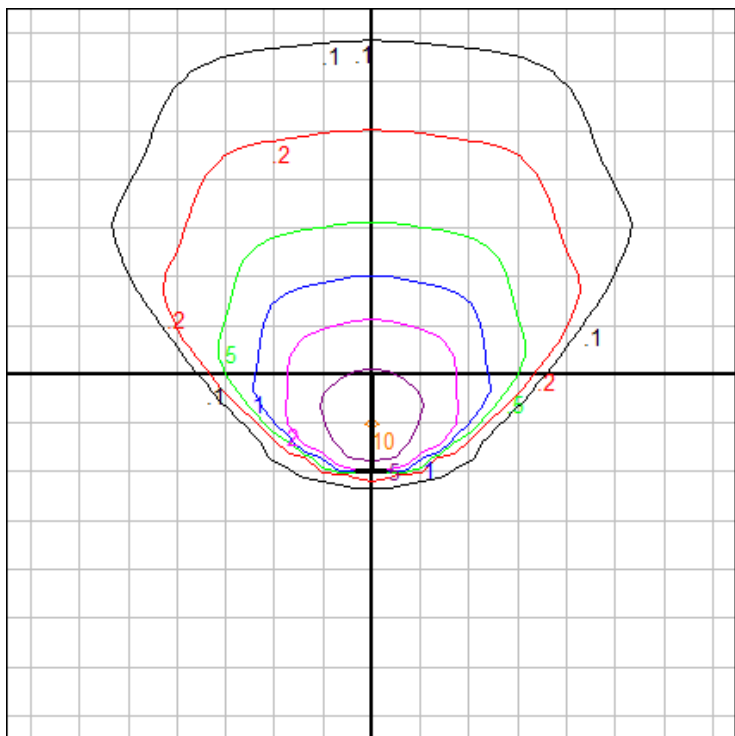


Characteristics

NEMA Type	5 H x 6 V
Maximum Candela	1572.722
Maximum Candela Angle	0 H 55 V
Horizontal Beam Angle (50%)	62.3
Vertical Beam Angle (50%)	81.1
Horizontal Field Angle (10%)	98.3
Vertical Field Angle (10%)	110.1
Lumens Per Lamp	N.A. (absolute)
Total Lamp Lumens	N.A. (absolute)
Beam Lumens	1501
Beam Efficiency	N.A.
Field Lumens	2122
Field Efficiency	N.A.
Spill Lumens	59
Luminaire Lumens	2181
Total Efficiency	N.A.
Total Luminaire Watts	29
Ballast Factor	1.00

Zonal Lumen Summary

Zone	Lumens
0-10	0.00
10-20	0.00
20-30	0.00
30-40	0.00
40-50	0.00
50-60	0.00
60-70	0.00
70-80	0.44
80-90	4.87
90-100	61.26
100-110	170.41
110-120	288.46
120-130	363.90
130-140	378.60
140-150	342.02
150-160	287.24
160-170	211.85
170-180	78.55



Fixture Setback: 10 ft.

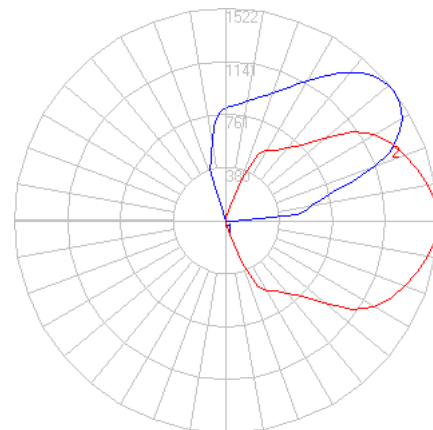
Grid Spacing: 5 ft.

In the interest of product improvement, BEGA reserves the right to make technical changes without notice.

BEGA

File: 84758K27_BEGA_IES.ies

TEST: BE_84758K4
 TEST LAB: BEGA
 DATE: 01/07/2021
 LUMINAIRE: 84758K27
 LAMP: 24.1W LED

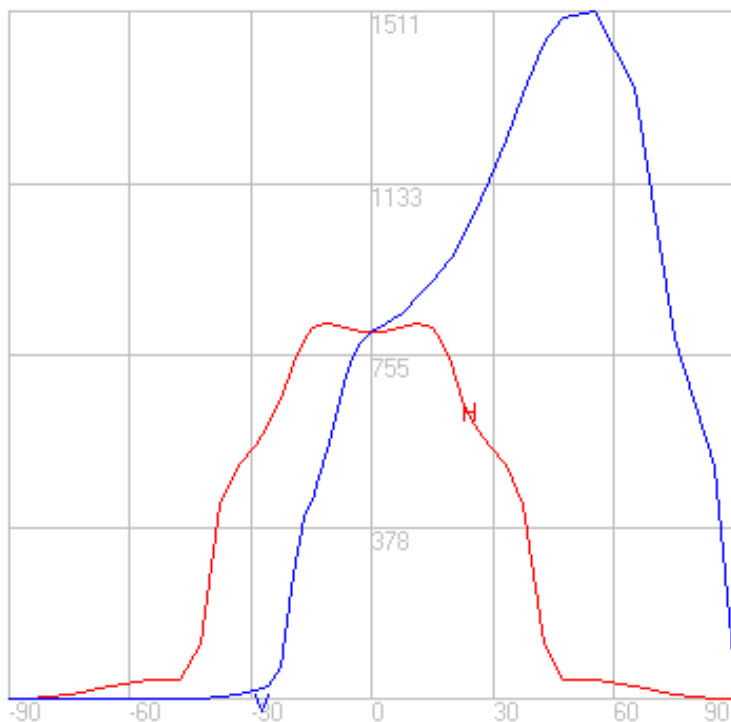
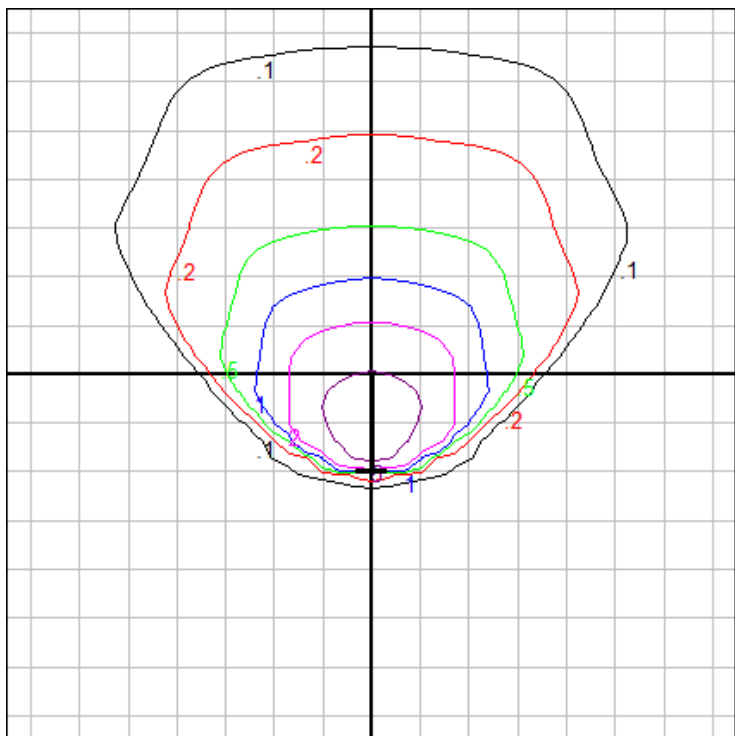


Characteristics

NEMA Type	5 H x 6 V
Maximum Candela	1510.567
Maximum Candela Angle	0 H 55 V
Horizontal Beam Angle (50%)	62.3
Vertical Beam Angle (50%)	81.1
Horizontal Field Angle (10%)	98.3
Vertical Field Angle (10%)	110.1
Lumens Per Lamp	N.A. (absolute)
Total Lamp Lumens	N.A. (absolute)
Beam Lumens	1442
Beam Efficiency	N.A.
Field Lumens	2038
Field Efficiency	N.A.
Spill Lumens	56
Luminaire Lumens	2095
Total Efficiency	N.A.
Total Luminaire Watts	29
Ballast Factor	1.00

Zonal Lumen Summary

Zone	Lumens
0-10	0.00
10-20	0.00
20-30	0.00
30-40	0.00
40-50	0.00
50-60	0.00
60-70	0.00
70-80	0.43
80-90	4.68
90-100	58.84
100-110	163.68
110-120	277.06
120-130	349.51
130-140	363.64
140-150	328.50
150-160	275.88
160-170	203.48
170-180	75.44



Fixture Setback: 10 ft.

Grid Spacing: 5 ft.

In the interest of product improvement, BEGA reserves the right to make technical changes without notice.