

**Application**

An in-grade luminaire for installation in pre-cored holes and intended to provide a uniform wall wash. Designed to bear pressure loads up to 4,400 lbs. from vehicles with pneumatic tires. The luminaire must not be used for traffic lanes where it is subject to horizontal pressure from vehicles braking, accelerating or changing direction

**Materials**

- White UV-stabilized acrylic diffuser
- 316 grade stainless steel
- Fully potted waterstopper cable
- High temperature silicone gasket
- Stainless steel screw clamps
- Stainless steel hardware
- Aluminum installation housing
- Pure anodized aluminum reflector surface

**NRTL** listed to North American Standards, suitable for wet locations  
Protection class IP 68

**Weight:** 4.2 lbs.

**Electrical**

Operating voltage	120-277VAC
Minimum start temperature	-30° C
LED module wattage	4.0W
System wattage	6.6W
Controllability	0-10V dimmable
Color rendering index	Ra > 80
Luminaire lumens	434 lm
LED service life (L70)	60000hrs

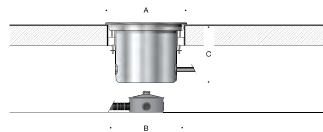
**LED color temperature**

- 4000K (K4)
- 3500K (K35)
- 3000K (K3)
- 2700K (K27)

**BEGA** can supply you with suitable LED replacement modules for up to 20 years after the purchase of LED luminaires - see website for details

**Finish**

#4 brushed stainless steel. Custom colors are not available.



**In-grade luminaire · Wall washer**

	LED	$\beta$	A	B	C
<b>B84766</b>	4.0W	55°x43°	6 1/8	5 3/4	6

Type:

BEGA Product:

Project:

Modified:

**Available options**

- DALI-2 Enabled for DALI control system
- FSC Fusing
- NSL Non-skid lens

