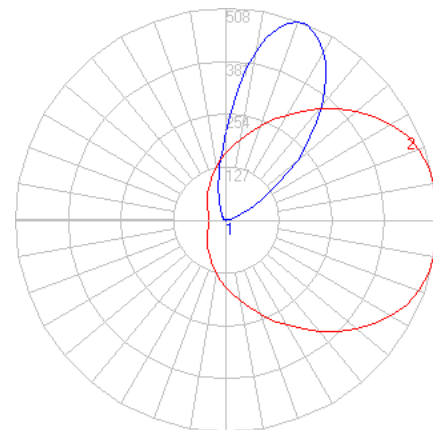
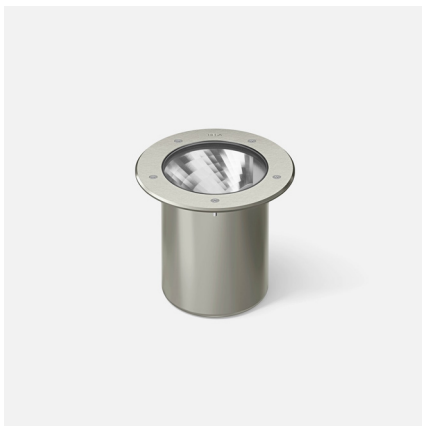


BEGA

File: 84767K4_BEGA_IES.ies

TEST: 84767K4
 TEST LAB: BEGA
 DATE: 08/04/21
 LUMINAIRE: 84767K4
 LAMP: 4.0W LED

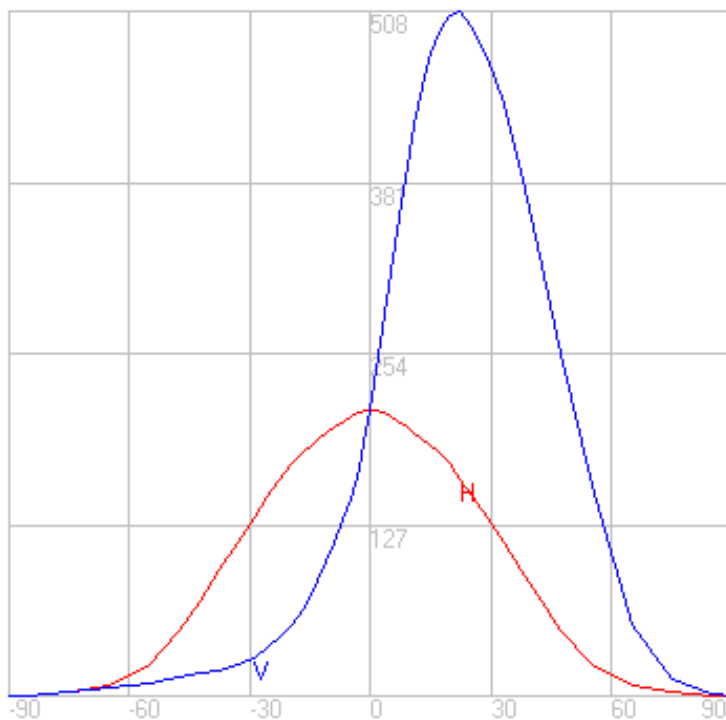
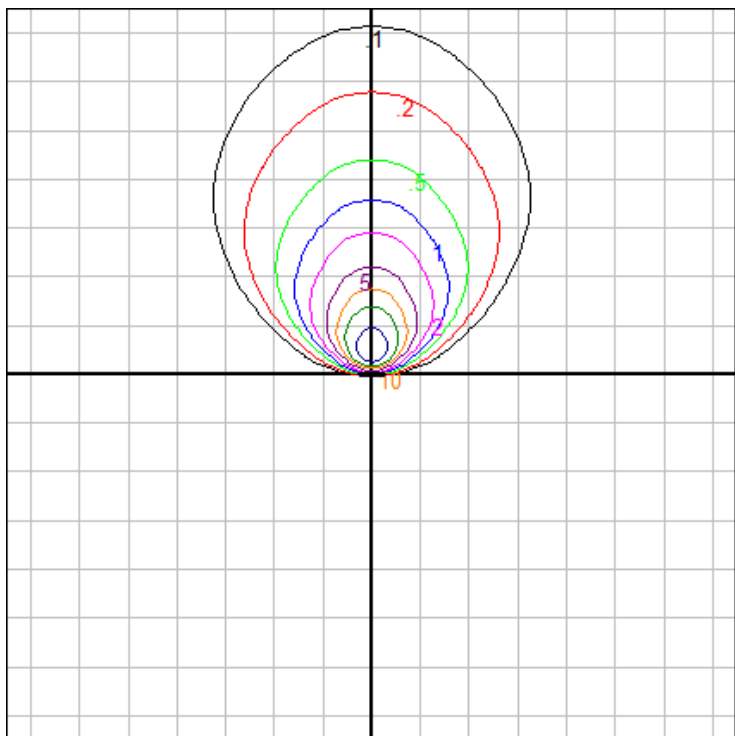


Characteristics

NEMA Type	6 H x 5 V
Maximum Candela	507.9
Maximum Candela Angle	0 H 22.5 V
Horizontal Beam Angle (50%)	52.4
Vertical Beam Angle (50%)	45.5
Horizontal Field Angle (10%)	101.0
Vertical Field Angle (10%)	85.7
Lumens Per Lamp	N.A. (absolute)
Total Lamp Lumens	N.A. (absolute)
Beam Lumens	210
Beam Efficiency	N.A.
Field Lumens	391
Field Efficiency	N.A.
Spill Lumens	49
Luminaire Lumens	440
Total Efficiency	N.A.
Total Luminaire Watts	7
Ballast Factor	1.00

Zonal Lumen Summary

Zone	Lumens
0-10	21.38
10-20	66.10
20-30	96.62
30-40	99.62
40-50	80.52
50-60	48.42
60-70	19.27
70-80	5.50
80-90	0.82
90-100	0.00
100-110	0.00
110-120	0.00
120-130	0.00
130-140	0.00
140-150	0.00
150-160	0.00
160-170	0.00
170-180	0.00



Setback Distance: 1 ft.

Grid Spacing: 2 ft.

In the interest of product improvement, BEGA reserves the right to make technical changes without notice.

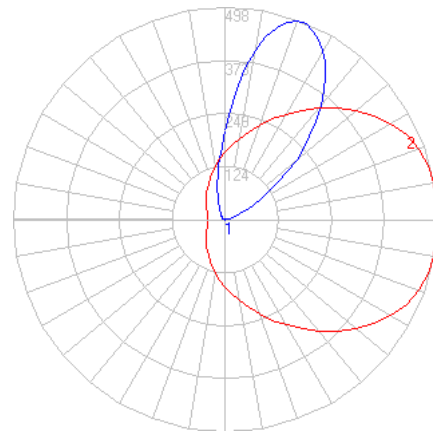
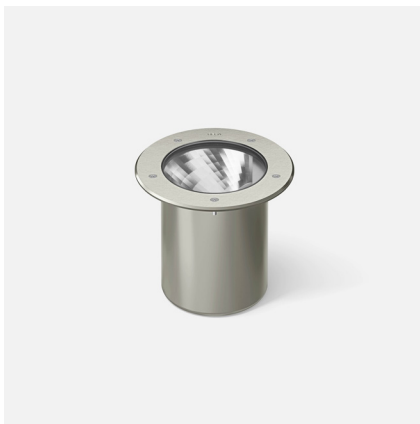
BEGA 1000 Bega Way, Carpinteria, CA 93013 (805)684-0533 Fax (805)566-9474 www.bega-us.com © Copyright BEGA-US 2025

03/13/26

BEGA

File: 84767K35_BEGA_IES.ies

TEST: 84767K4
 TEST LAB: BEGA
 DATE: 08/04/21
 LUMINAIRE: 84767K35
 LAMP: 4.0W LED

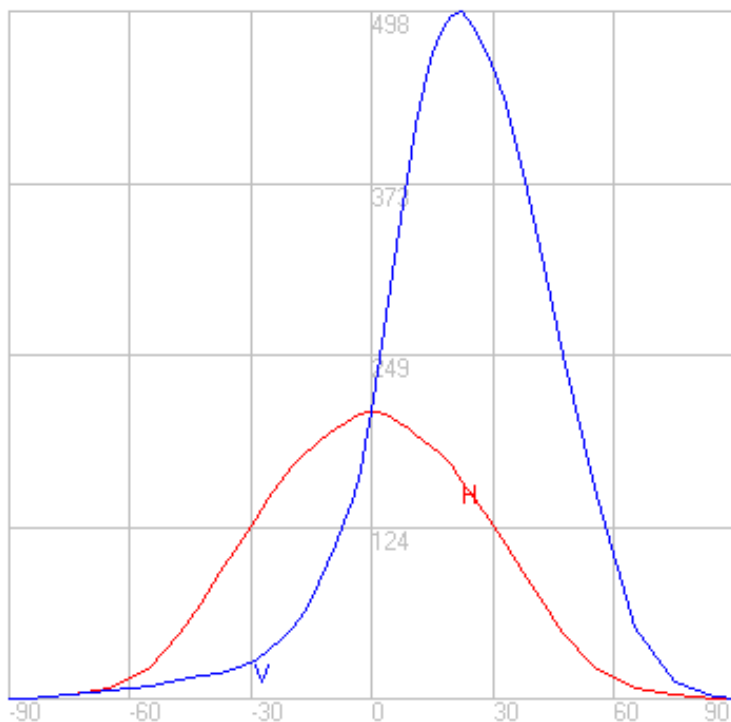
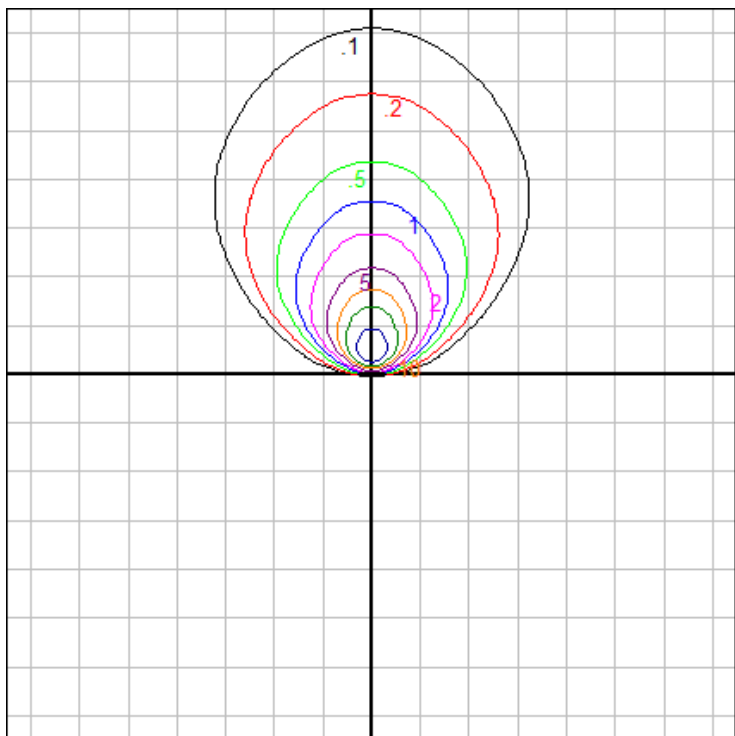


Characteristics

NEMA Type	6 H x 5 V
Maximum Candela	497.742
Maximum Candela Angle	0 H 22.5 V
Horizontal Beam Angle (50%)	52.4
Vertical Beam Angle (50%)	45.5
Horizontal Field Angle (10%)	101.0
Vertical Field Angle (10%)	85.7
Lumens Per Lamp	N.A. (absolute)
Total Lamp Lumens	N.A. (absolute)
Beam Lumens	206
Beam Efficiency	N.A.
Field Lumens	383
Field Efficiency	N.A.
Spill Lumens	48
Luminaire Lumens	431
Total Efficiency	N.A.
Total Luminaire Watts	7
Ballast Factor	1.00

Zonal Lumen Summary

Zone	Lumens
0-10	20.95
10-20	64.78
20-30	94.69
30-40	97.62
40-50	78.91
50-60	47.45
60-70	18.88
70-80	5.39
80-90	0.81
90-100	0.00
100-110	0.00
110-120	0.00
120-130	0.00
130-140	0.00
140-150	0.00
150-160	0.00
160-170	0.00
170-180	0.00



Setback Distance: 1 ft.

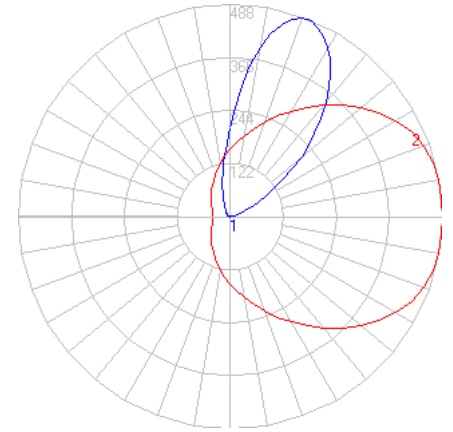
Grid Spacing: 2 ft.

In the interest of product improvement, BEGA reserves the right to make technical changes without notice.

BEGA

File: 84767K3_BEGA_IES.ies

TEST: 84767K4
 TEST LAB: BEGA
 DATE: 08/04/21
 LUMINAIRE: 84767K3
 LAMP: 4.0W LED

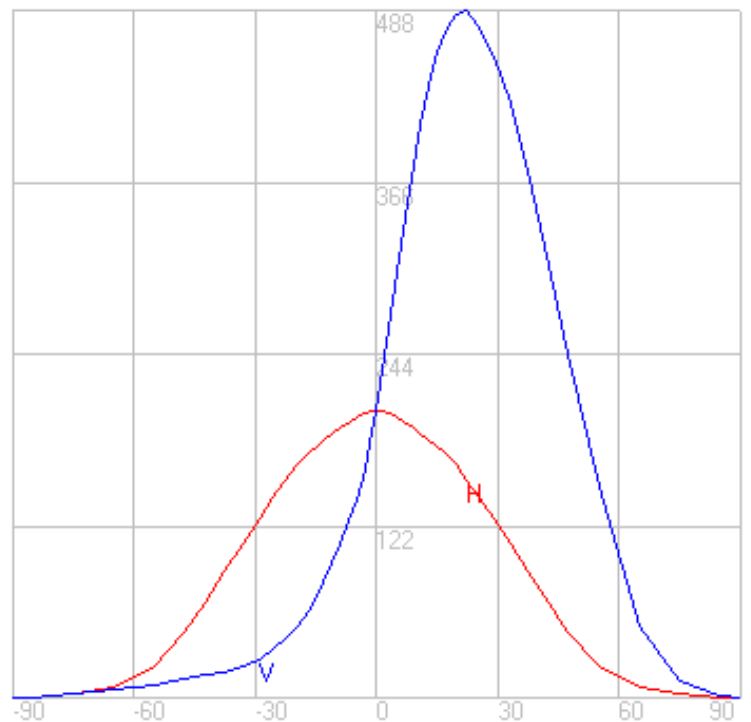
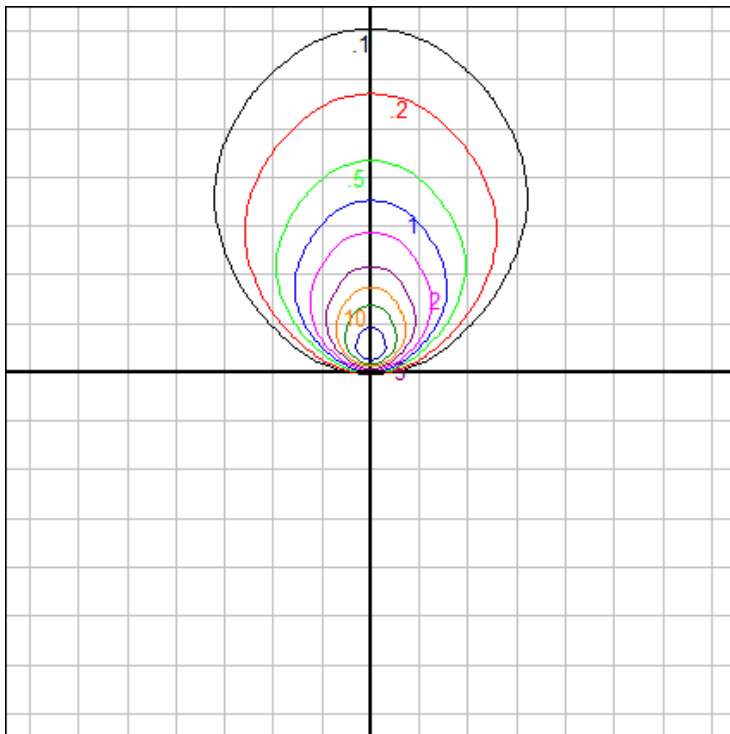


Characteristics

NEMA Type	6 H x 5 V
Maximum Candela	487.584
Maximum Candela Angle	0 H 22.5 V
Horizontal Beam Angle (50%)	52.4
Vertical Beam Angle (50%)	45.5
Horizontal Field Angle (10%)	101.0
Vertical Field Angle (10%)	85.7
Lumens Per Lamp	N.A. (absolute)
Total Lamp Lumens	N.A. (absolute)
Beam Lumens	202
Beam Efficiency	N.A.
Field Lumens	375
Field Efficiency	N.A.
Spill Lumens	47
Luminaire Lumens	422
Total Efficiency	N.A.
Total Luminaire Watts	7
Ballast Factor	1.00

Zonal Lumen Summary

Zone	Lumens
0-10	20.52
10-20	63.46
20-30	92.75
30-40	95.63
40-50	77.30
50-60	46.48
60-70	18.50
70-80	5.28
80-90	0.79
90-100	0.00
100-110	0.00
110-120	0.00
120-130	0.00
130-140	0.00
140-150	0.00
150-160	0.00
160-170	0.00
170-180	0.00



Setback Distance: 1 ft.

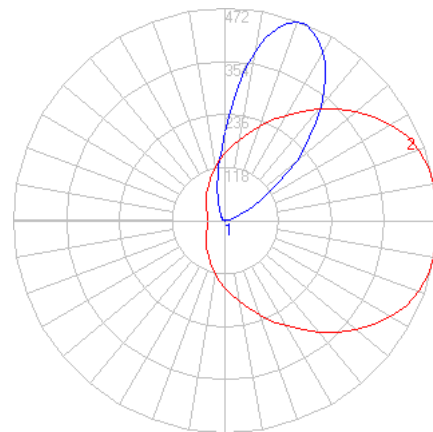
Grid Spacing: 2 ft.

In the interest of product improvement, BEGA reserves the right to make technical changes without notice.

BEGA

File: 84767K27_BEGA_IES.ies

TEST: 84767K4
 TEST LAB: BEGA
 DATE: 08/04/21
 LUMINAIRE: 84767K27
 LAMP: 4.0W LED

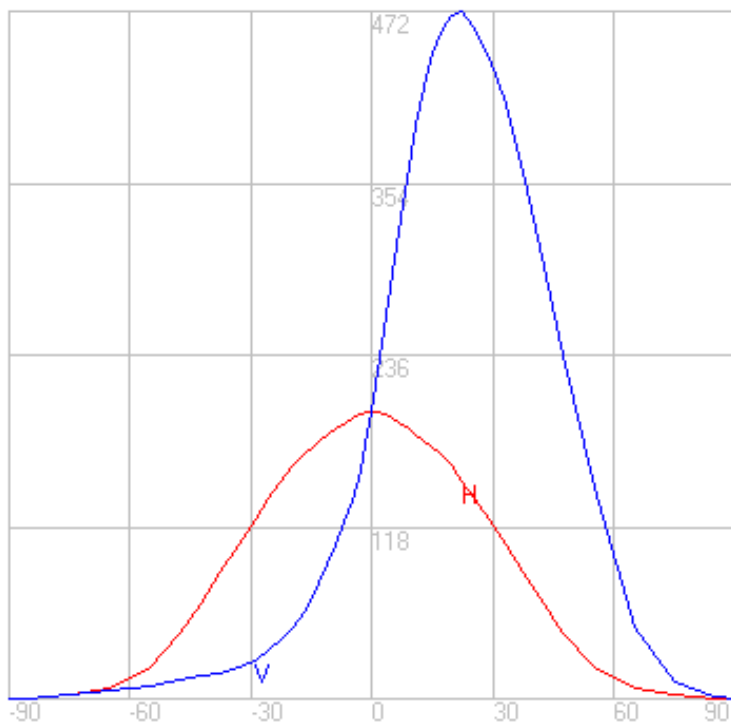
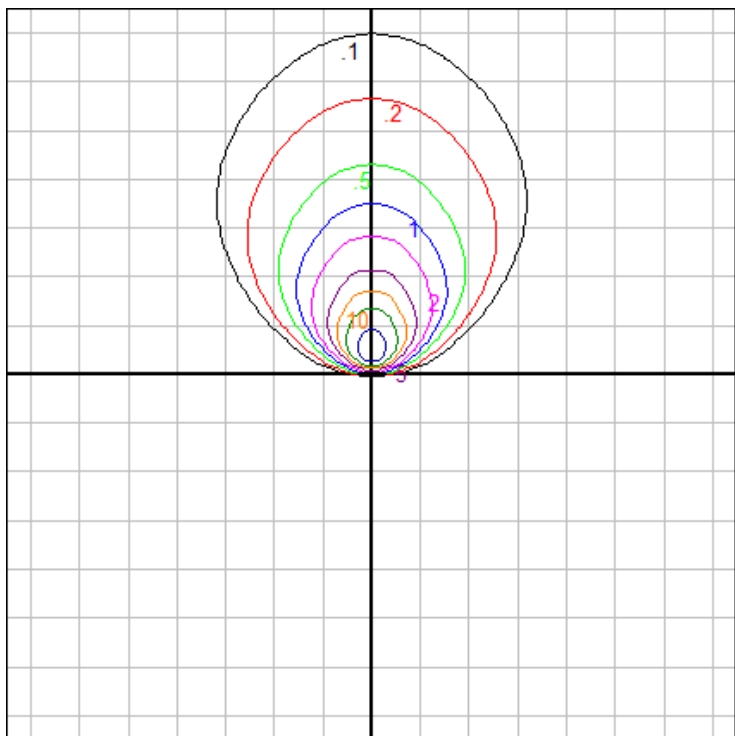


Characteristics

NEMA Type	6 H x 5 V
Maximum Candela	472.347
Maximum Candela Angle	0 H 22.5 V
Horizontal Beam Angle (50%)	52.4
Vertical Beam Angle (50%)	45.5
Horizontal Field Angle (10%)	101.0
Vertical Field Angle (10%)	85.8
Lumens Per Lamp	N.A. (absolute)
Total Lamp Lumens	N.A. (absolute)
Beam Lumens	195
Beam Efficiency	N.A.
Field Lumens	364
Field Efficiency	N.A.
Spill Lumens	46
Luminaire Lumens	409
Total Efficiency	N.A.
Total Luminaire Watts	7
Ballast Factor	1.00

Zonal Lumen Summary

Zone	Lumens
0-10	19.88
10-20	61.47
20-30	89.86
30-40	92.64
40-50	74.89
50-60	45.03
60-70	17.92
70-80	5.12
80-90	0.77
90-100	0.00
100-110	0.00
110-120	0.00
120-130	0.00
130-140	0.00
140-150	0.00
150-160	0.00
160-170	0.00
170-180	0.00



Setback Distance: 1 ft.

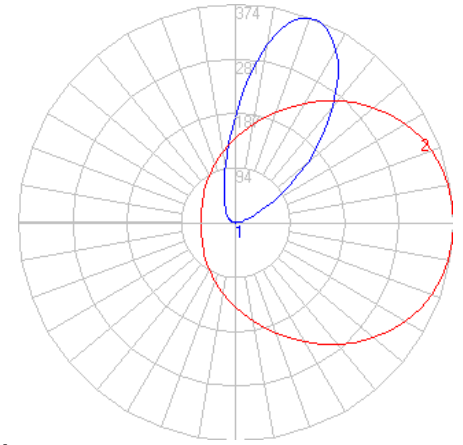
Grid Spacing: 2 ft.

In the interest of product improvement, BEGA reserves the right to make technical changes without notice.

BEGA

File: 84767K4_NSL_BEGA_IES.ies

TEST: 84767RK4
 TEST LAB: BEGA
 DATE: 08/04/21
 LUMINAIRE: 84767K4 + Non Skid Lens
 LAMP: 4.0W LED

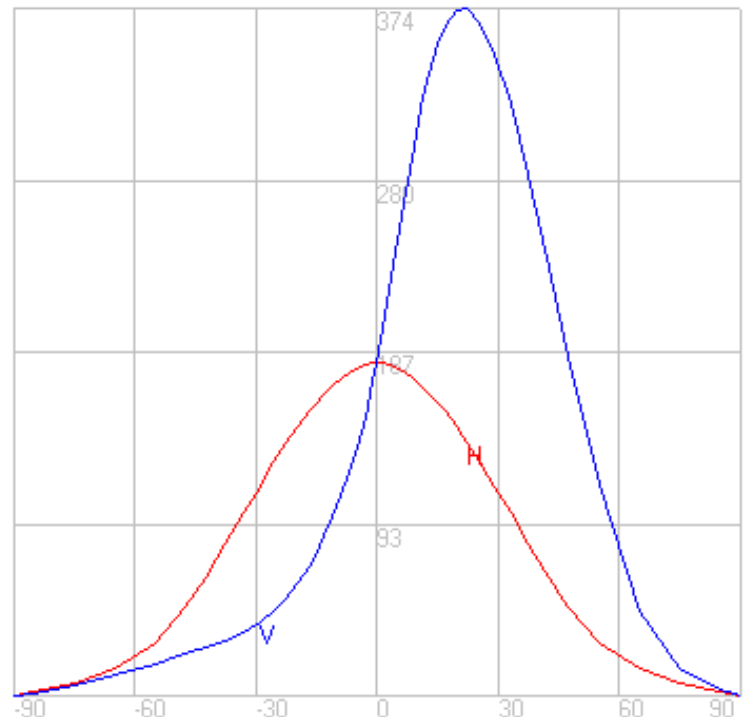
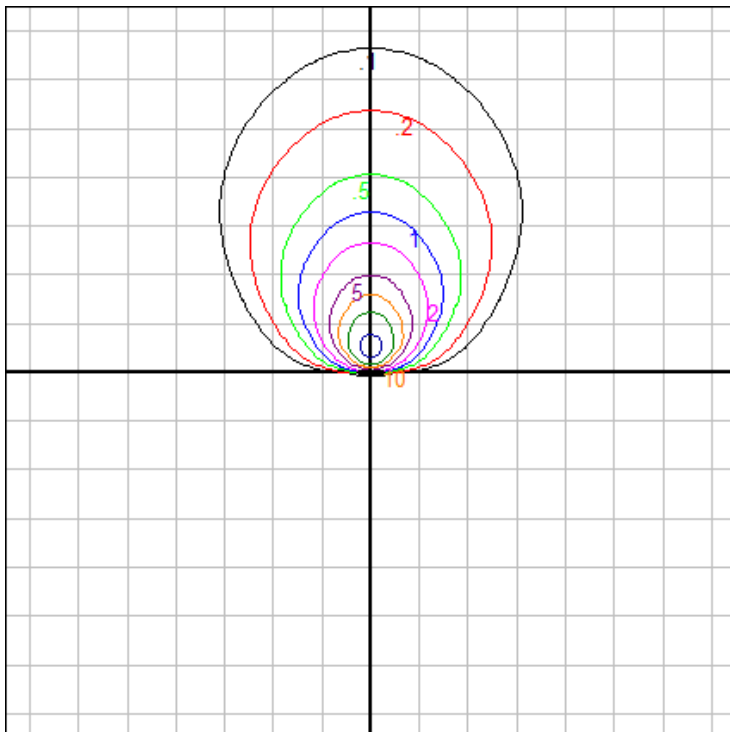


Characteristics

NEMA Type	6 H x 5 V
Maximum Candela	373.5
Maximum Candela Angle	0 H 22.5 V
Horizontal Beam Angle (50%)	54.7
Vertical Beam Angle (50%)	46.8
Horizontal Field Angle (10%)	106.7
Vertical Field Angle (10%)	98.6
Lumens Per Lamp	N.A. (absolute)
Total Lamp Lumens	N.A. (absolute)
Beam Lumens	163
Beam Efficiency	N.A.
Field Lumens	322
Field Efficiency	N.A.
Spill Lumens	50
Luminaire Lumens	372
Total Efficiency	N.A.
Total Luminaire Watts	7
Ballast Factor	1.00

Zonal Lumen Summary

Zone	Lumens
0-10	17.82
10-20	53.29
20-30	77.25
30-40	80.34
40-50	66.08
50-60	42.89
60-70	21.82
70-80	9.31
80-90	2.41
90-100	0.03
100-110	0.00
110-120	0.00
120-130	0.00
130-140	0.00
140-150	0.00
150-160	0.00
160-170	0.00
170-180	0.00



Setback Distance: 1 ft.

Grid Spacing: 2 ft.

In the interest of product improvement, BEGA reserves the right to make technical changes without notice.

BEGA 1000 Bega Way, Carpinteria, CA 93013 (805)684-0533 Fax (805)566-9474 www.bega-us.com © Copyright BEGA-US 2025

03/13/26