

Application

In-grade adjustable floodlight luminaires. The patented mounting system allows for installation in pre-cored holes such as stone, tile or decks. These luminaires are designed to bear pressure loads up to 4400 lbs. from vehicles with pneumatic tires. The luminaires must not be used for traffic lanes where they are subject to horizontal pressure from vehicles braking, accelerating and changing direction. The inclination angle is adjustable from 0-30° in 5° increments, and the optical assembly can be rotated 180° around the vertical axis.

Materials

- Clear safety glass
- Corrosion-resistant 304 grade stainless steel
- Fully potted waterstopper cable
- High temperature silicone gasket
- Stainless steel screw clamps
- Mechanically captive stainless steel fasteners
- Composite installation housing
- Pure anodized aluminum reflector

NRTL listed to North American Standards, suitable for wet locations
Protection class IP 68

Weight: 7.5 lbs.

Electrical

Operating voltage	120-277V AC
Minimum start temperature	-20° C
LED module wattage	12.0W
System wattage	14.0W
Controllability	0-10V dimming down to 1%
Color rendering index	Ra > 90
Luminaire lumens	1488 lm
LED service life (L70)	60000 hrs

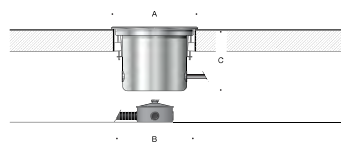
LED color temperature

- 4000K (K4)
- 3500K (K35)
- 3000K (K3)
- 2700K (K27)

BEGA can supply you with suitable LED replacement modules for up to 20 years after the purchase of LED luminaires - see website for details

Finish

#4 brushed stainless steel. Custom colors are not available.



In-grade luminaire · Adjustable · Very wide beam

	LED	β	A	B	C
B84787	12.0W	50°	8 1/8	7 1/4	6 1/2

Type:

BEGA Product:

Project:

Modified:

Available options

- DALI-2 Enabled for DALI control system
- FSC Fusing
- NSL Non-skid lens

