

Application

In-grade adjustable floodlight luminaires. The patented mounting system allows for installation in pre-cored holes such as stone, tile or decks. These luminaires are designed to bear pressure loads up to 4400 lbs. from vehicles with pneumatic tires. The luminaires must not be used for traffic lanes where they are subject to horizontal pressure from vehicles braking, accelerating and changing direction. The inclination angle is adjustable from 0-30°, and the optical assembly can be rotated 360° around the vertical axis.

Materials

- Clear safety glass
- 316 grade stainless steel
- Fully potted waterstopper cable
- High temperature silicone gasket
- Stainless steel hardware
- Stainless steel screw clamps
- Stainless steel helicoils
- Aluminum installation housing
- BEGA Hybrid Optics®

NRTL listed to North American Standards, suitable for wet locations
Protection class IP 68

Weight: 19.6lbs.

Electrical

| | |
|---------------------------|--------------------------|
| Operating voltage | 120-277VAC |
| Minimum start temperature | -30° C |
| LED module wattage | 37.5 W |
| System wattage | 44.0 W |
| Controllability | 0-10V dimming down to 1% |
| Color rendering index | Ra > 80 |
| Luminaire lumens | 2265 lm |
| LED service life (L70) | 60000hrs |

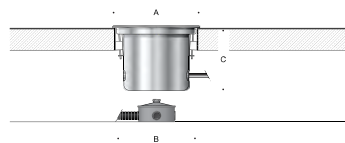
LED color temperature

- 4000K (K4)
- 3500K (K35)
- 3000K (K3)
- 2700K (K27)

BEGA can supply you with suitable LED replacement modules for up to 20 years after the purchase of LED luminaires - see website for details

Finish

#4 brushed stainless steel. Custom colors are not available.



In-grade luminaire · Adjustable · Focused beam

| | LED | β | A | B | C |
|---------------|--------|---------|--------------------------------|--------------------------------|---|
| B84791 | 37.5 W | 10° | 12 ⁷ / ₈ | 11 ⁷ / ₈ | 9 |

Type:

BEGA Product:

Project:

Modified:

Available options

- DALI-2 Enabled for DALI control system
- FSC Fusing
- NSL Non-skid lens

