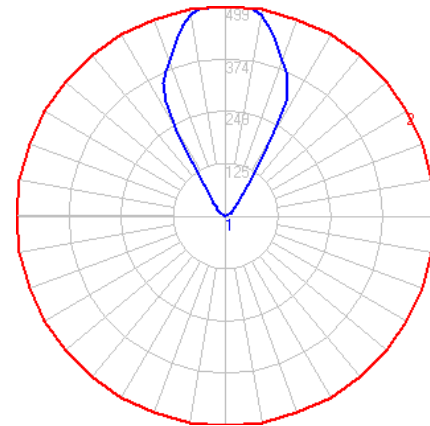


BEGA

File: 84795K4_BEGA_IES.ies

TEST: 84795K4
 TEST LAB: BEGA
 DATE: 02/17/2021
 LUMINAIRE: 84795K4
 LAMP: 3.8 W LED

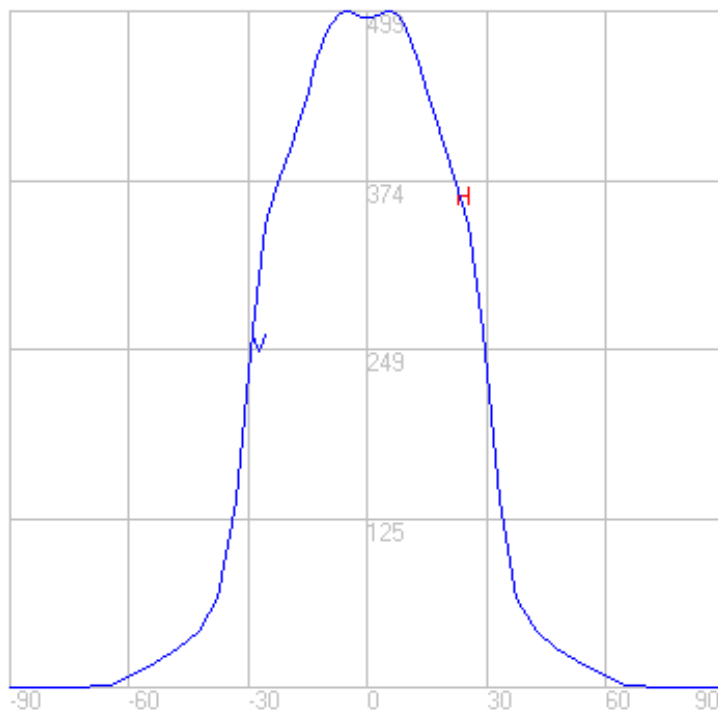
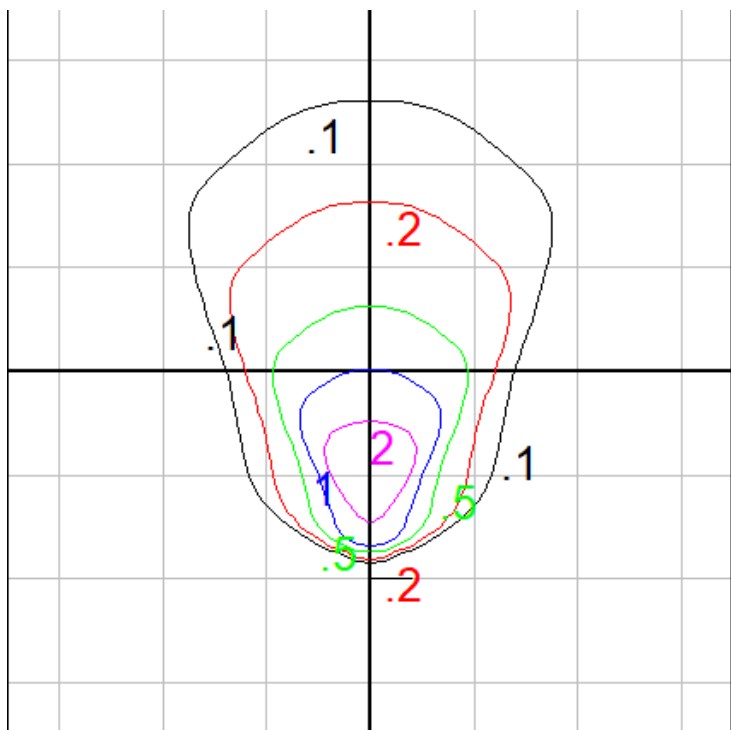


Characteristics

NEMA Type	5 H x 5 V
Maximum Candela	498.9
Maximum Candela Angle	-5 H -1 V
Horizontal Beam Angle (50%)	58.1
Vertical Beam Angle (50%)	58.9
Horizontal Field Angle (10%)	81.0
Vertical Field Angle (10%)	81.5
Lumens Per Lamp	N.A. (absolute)
Total Lamp Lumens	N.A. (absolute)
Beam Lumens	314
Beam Efficiency	N.A.
Field Lumens	397
Field Efficiency	N.A.
Spill Lumens	41
Luminaire Lumens	438
Total Efficiency	N.A.
Total Luminaire Watts	6.5
Ballast Factor	1.00

Zonal Lumen Summary

Zone	Lumens
0-10	47.27
10-20	123.46
20-30	153.48
30-40	68.45
40-50	27.14
50-60	14.13
60-70	2.72
70-80	0.01
80-90	0.00
90-100	0.00
100-110	0.00
110-120	0.00
120-130	0.00
130-140	0.00
140-150	0.00
150-160	0.00
160-170	0.00
170-180	0.00



Setback Distance: 2.5 ft.

Grid Spacing: 5 ft.

In the interest of product improvement, BEGA reserves the right to make technical changes without notice.

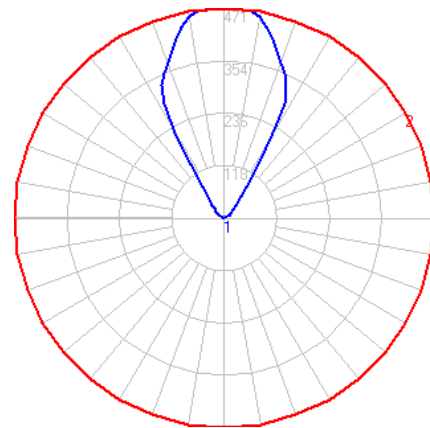
BEGA 1000 Bega Way, Carpinteria, CA 93013 (805)684-0533 Fax (805)566-9474 www.bega-us.com © Copyright BEGA-US 2025

04/20/2026

BEGA

File: 84795K35_BEGA_IES.ies

TEST: 84795K4
 TEST LAB: BEGA
 DATE: 02/17/2021
 LUMINAIRE: 84795K35
 LAMP: 3.8 W LED

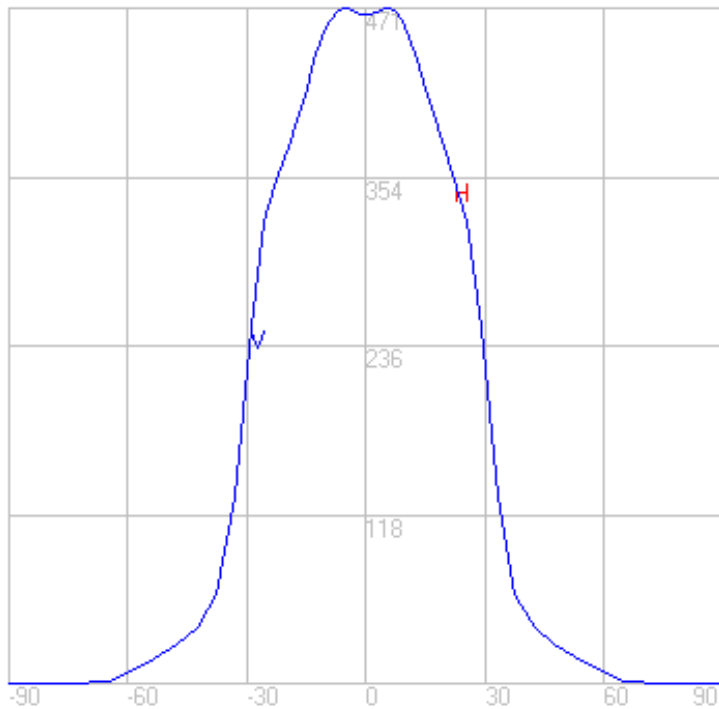
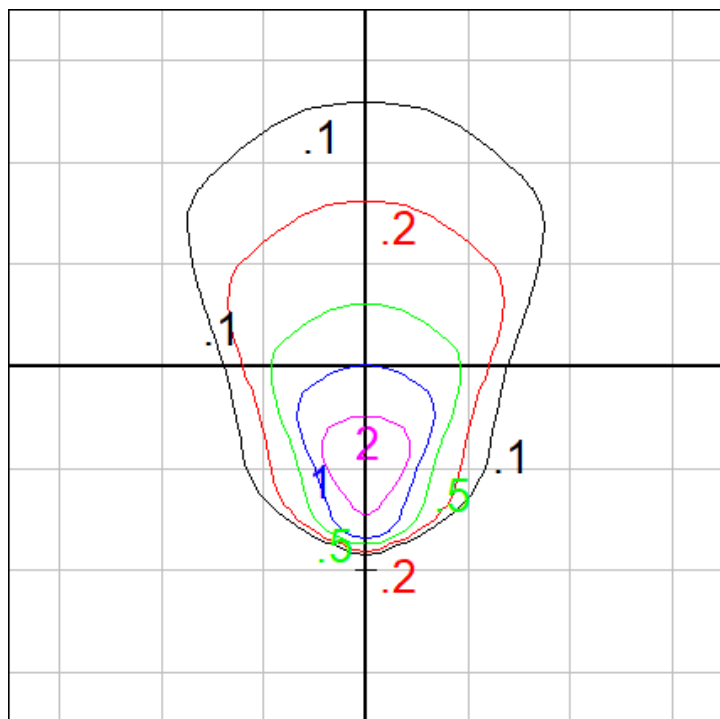


Characteristics

NEMA Type	5 H x 5 V
Maximum Candela	471.361
Maximum Candela Angle	-5 H -1 V
Horizontal Beam Angle (50%)	58.1
Vertical Beam Angle (50%)	58.9
Horizontal Field Angle (10%)	81.0
Vertical Field Angle (10%)	81.5
Lumens Per Lamp	N.A. (absolute)
Total Lamp Lumens	N.A. (absolute)
Beam Lumens	297
Beam Efficiency	N.A.
Field Lumens	375
Field Efficiency	N.A.
Spill Lumens	39
Luminaire Lumens	414
Total Efficiency	N.A.
Total Luminaire Watts	6.5
Ballast Factor	1.00

Zonal Lumen Summary

Zone	Lumens
0-10	44.66
10-20	116.64
20-30	145.01
30-40	64.67
40-50	25.64
50-60	13.35
60-70	2.57
70-80	0.01
80-90	0.00
90-100	0.00
100-110	0.00
110-120	0.00
120-130	0.00
130-140	0.00
140-150	0.00
150-160	0.00
160-170	0.00
170-180	0.00



Setback Distance: 2.5 ft.

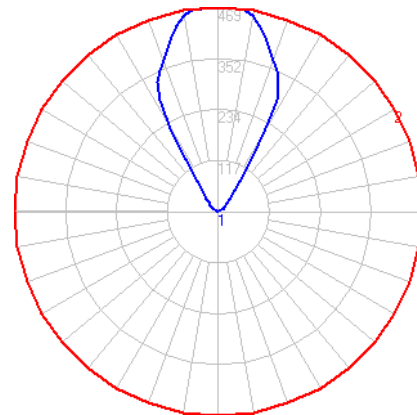
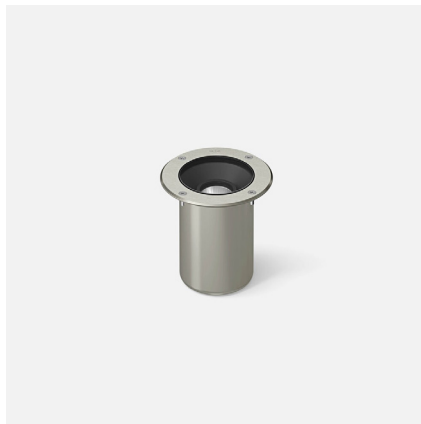
Grid Spacing: 5 ft.

In the interest of product improvement, BEGA reserves the right to make technical changes without notice.

BEGA

File: 84795K3_BEGA_IES.ies

TEST: 84795K4
 TEST LAB: BEGA
 DATE: 02/17/2021
 LUMINAIRE: 84795K3
 LAMP: 3.8 W LED

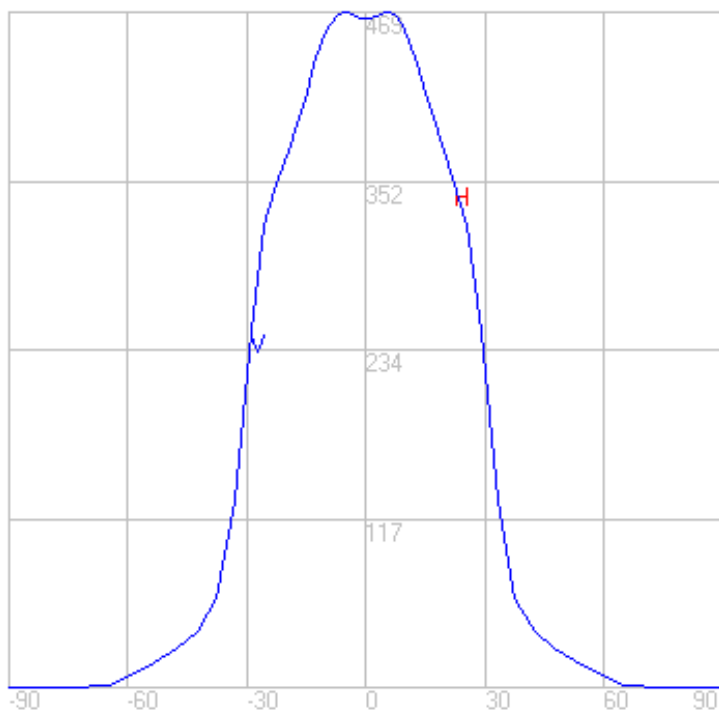
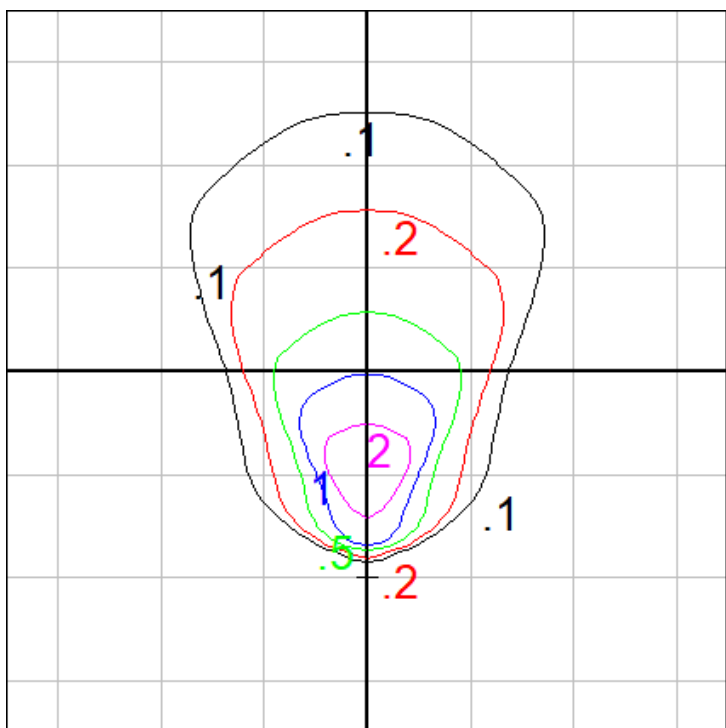


Characteristics

NEMA Type	5 H x 5 V
Maximum Candela	468.816
Maximum Candela Angle	-5 H -1 V
Horizontal Beam Angle (50%)	58.1
Vertical Beam Angle (50%)	58.9
Horizontal Field Angle (10%)	81.0
Vertical Field Angle (10%)	81.5
Lumens Per Lamp	N.A. (absolute)
Total Lamp Lumens	N.A. (absolute)
Beam Lumens	295
Beam Efficiency	N.A.
Field Lumens	373
Field Efficiency	N.A.
Spill Lumens	39
Luminaire Lumens	412
Total Efficiency	N.A.
Total Luminaire Watts	6.5
Ballast Factor	1.00

Zonal Lumen Summary

Zone	Lumens
0-10	44.42
10-20	116.01
20-30	144.22
30-40	64.32
40-50	25.50
50-60	13.28
60-70	2.56
70-80	0.01
80-90	0.00
90-100	0.00
100-110	0.00
110-120	0.00
120-130	0.00
130-140	0.00
140-150	0.00
150-160	0.00
160-170	0.00
170-180	0.00



Setback Distance: 2.5 ft.

Grid Spacing: 5 ft.

In the interest of product improvement, BEGA reserves the right to make technical changes without notice.

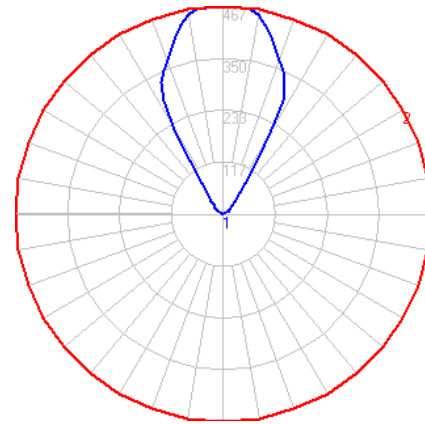
BEGA 1000 Bega Way, Carpinteria, CA 93013 (805)684-0533 Fax (805)566-9474 www.bega-us.com © Copyright BEGA-US 2025

04/20/2026

BEGA

File: 84795K27_BEGA_IES.ies

TEST: 84795K4
 TEST LAB: BEGA
 DATE: 02/17/2021
 LUMINAIRE: 84795K27
 LAMP: 3.8 W LED

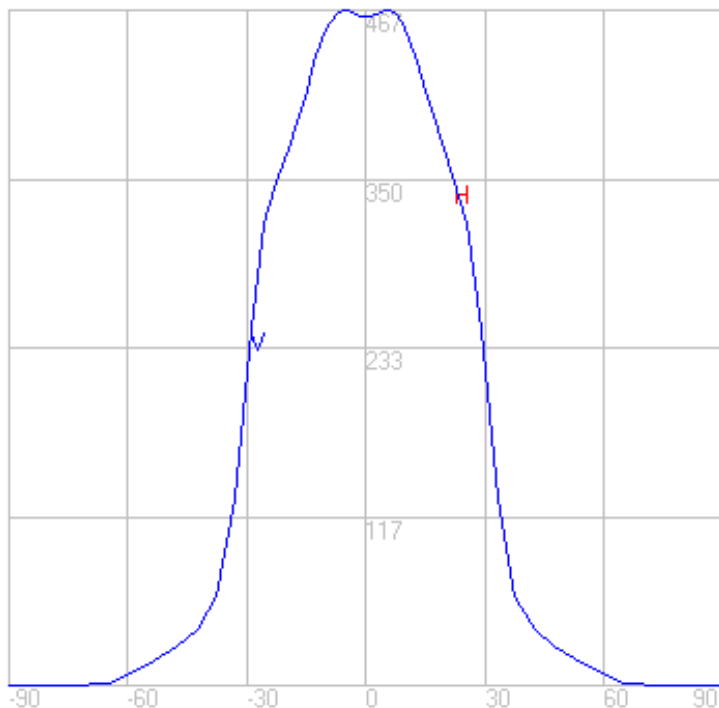
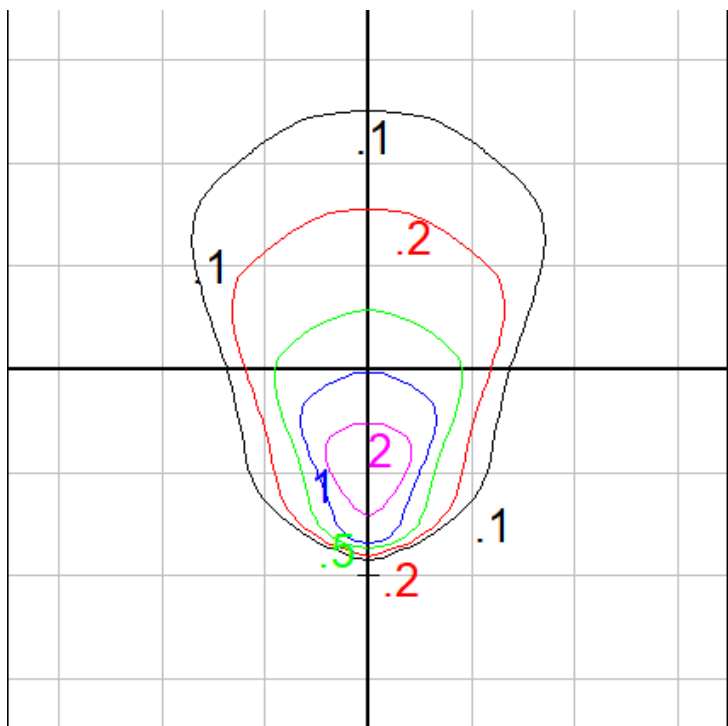


Characteristics

NEMA Type	5 H x 5 V
Maximum Candela	466.821
Maximum Candela Angle	-5 H -1 V
Horizontal Beam Angle (50%)	58.1
Vertical Beam Angle (50%)	58.9
Horizontal Field Angle (10%)	81.0
Vertical Field Angle (10%)	81.5
Lumens Per Lamp	N.A. (absolute)
Total Lamp Lumens	N.A. (absolute)
Beam Lumens	294
Beam Efficiency	N.A.
Field Lumens	371
Field Efficiency	N.A.
Spill Lumens	39
Luminaire Lumens	410
Total Efficiency	N.A.
Total Luminaire Watts	6.5
Ballast Factor	1.00

Zonal Lumen Summary

Zone	Lumens
0-10	44.23
10-20	115.52
20-30	143.61
30-40	64.05
40-50	25.40
50-60	13.22
60-70	2.54
70-80	0.01
80-90	0.00
90-100	0.00
100-110	0.00
110-120	0.00
120-130	0.00
130-140	0.00
140-150	0.00
150-160	0.00
160-170	0.00
170-180	0.00



Setback Distance: 2.5 ft.

Grid Spacing: 5 ft.

In the interest of product improvement, BEGA reserves the right to make technical changes without notice.

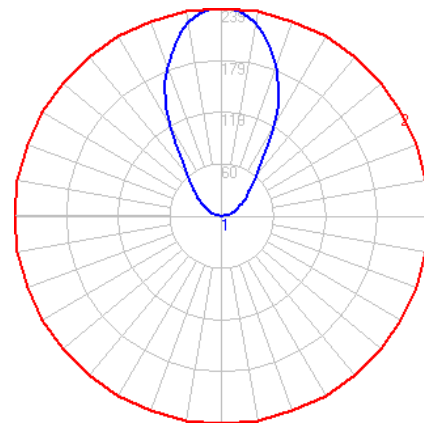
BEGA 1000 Bega Way, Carpinteria, CA 93013 (805)684-0533 Fax (805)566-9474 www.bega-us.com © Copyright BEGA-US 2025

04/20/2026

BEGA

File: 84795K4_NSL_BEGA_IES.ies

TEST: 84795RK4
 TEST LAB: BEGA
 DATE: 02/17/2021
 LUMINAIRE: 84795K4 + Non Skid Lens
 LAMP: 3.8 W LED

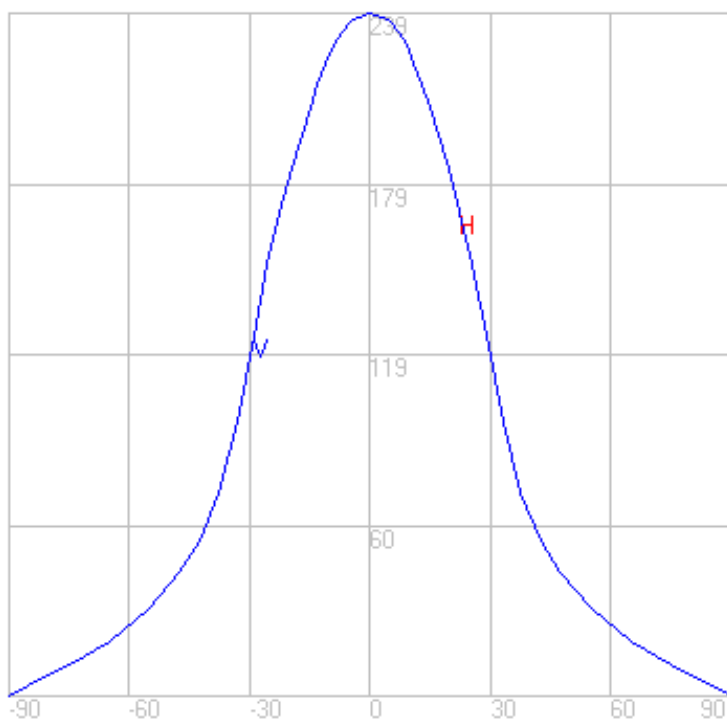
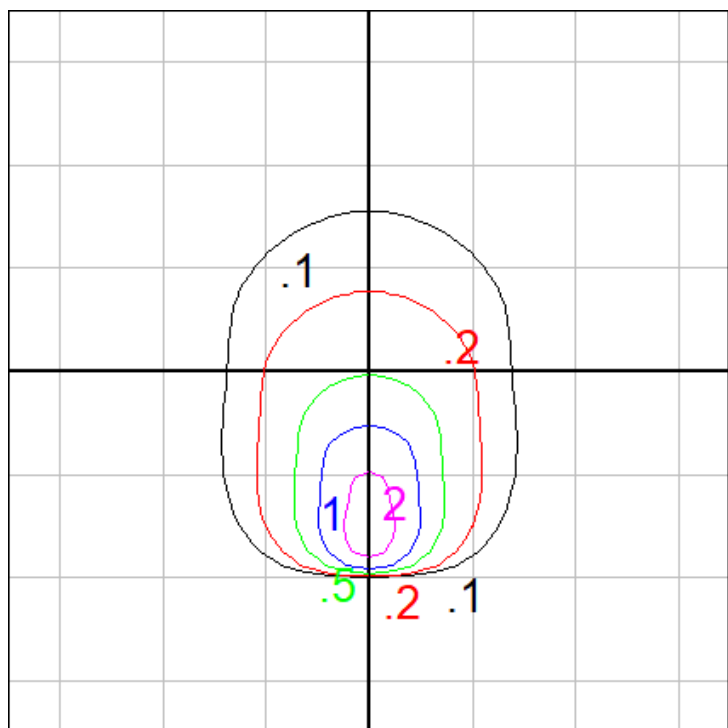


Characteristics

NEMA Type	6 H x 6 V
Maximum Candela	238.5
Maximum Candela Angle	0 H 0 V
Horizontal Beam Angle (50%)	59.8
Vertical Beam Angle (50%)	59.8
Horizontal Field Angle (10%)	122.1
Vertical Field Angle (10%)	122.1
Lumens Per Lamp	N.A. (absolute)
Total Lamp Lumens	N.A. (absolute)
Beam Lumens	149
Beam Efficiency	N.A.
Field Lumens	270
Field Efficiency	N.A.
Spill Lumens	32
Luminaire Lumens	302
Total Efficiency	N.A.
Total Luminaire Watts	6.5
Ballast Factor	1.00

Zonal Lumen Summary

Zone	Lumens
0-10	22.18
10-20	57.46
20-30	69.92
30-40	53.16
40-50	37.50
50-60	27.79
60-70	19.12
70-80	11.33
80-90	3.81
90-100	0.03
100-110	0.00
110-120	0.00
120-130	0.00
130-140	0.00
140-150	0.00
150-160	0.00
160-170	0.00
170-180	0.00



Setback Distance: 2.5 ft.

Grid Spacing: 5 ft.

In the interest of product improvement, BEGA reserves the right to make technical changes without notice.

BEGA 1000 Bega Way, Carpinteria, CA 93013 (805)684-0533 Fax (805)566-9474 www.bega-us.com © Copyright BEGA-US 2025

04/20/2026