

**Application**

In-grade adjustable floodlight luminaire. These luminaires are designed to bear pressure loads up to 4400 lbs. from vehicles with pneumatic tires. The luminaires must not be used for traffic lanes where they are subject to horizontal pressure from vehicles braking, accelerating and changing direction. The inclination angle is adjustable from 0-30°, and the optical assembly can be rotated 360° around the vertical axis.

**Materials**

- Clear safety glass
- 316 grade stainless steel
- Stainless steel hardware
- High temperature silicone gasket
- Fully potted waterstopper cable
- Stainless steel installation housing
- BEGA Hybrid Optics®

**NRTL** listed to North American Standards, suitable for wet locations  
Protection class IP 68

**Weight:** 12.8lbs.

**Electrical**

Operating voltage	120V or 277V AC
Minimum start temperature	-30° C
LED module wattage	25.7 W
System wattage	30.0 W
Controllability	0-10V, TRIAC, and ELV dimmable
Color rendering index	Ra > 90
Luminaire lumens	1691 lm
LED service life (L70)	60000hrs

**LED color temperature**

- 4000K (K4)
- 3500K (K35)
- 3000K (K3)
- 2700K (K27)

**BEGA** can supply you with suitable LED replacement modules for up to 20 years after the purchase of LED luminaires - see website for details

**Finish**

#4 brushed stainless steel. Custom colors are not available.

Type:

BEGA Product:

Project:

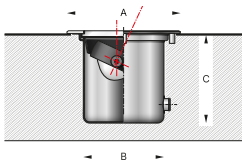
Modified:

**Available options**

DALI-2	Enabled for DALI control system
FSC	Fusing
NSL	Non-skid lens

**Included (available for pre-shipment)**

B70694	Installation housing
--------	----------------------



**In-grade luminaire · Adjustable · Focused beam**

	LED	$\beta$	A	B	C
<b>B84799</b>	25.7 W	8.5°	11	13 <sup>3</sup> / <sub>4</sub>	8 <sup>3</sup> / <sub>8</sub>

