

**Application**

An in-grade luminaire for installation in concrete or soil, and intended to provide a uniform wall wash. Designed to bear pressure loads up to 4,400 lbs. from vehicles with pneumatic tires. The luminaire must not be used for traffic lanes where it is subject to horizontal pressure from vehicles braking, accelerating or changing direction.

**Materials**

- Clear safety glass
- 316 grade stainless steel
- Fully potted waterstopper cable
- High temperature silicone gasket
- Stainless steel hardware
- Aluminum installation housing
- BEGA Hybrid Optics®

**NRTL** listed to North American Standards, suitable for wet locations  
Protection class IP 68

**Weight:** 12.8 lbs.

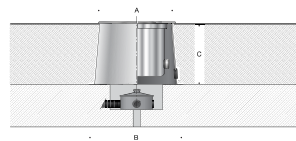
**Electrical**

Operating voltage	120V or 277V AC
Minimum start temperature	-30° C
LED module wattage	24.1 W
System wattage	28.0 W
Controllability	0-10V, TRIAC, and ELV dimmable
Color rendering index	Ra > 90
Luminaire lumens	2638 lm
LED service life (L70)	60000 hrs

**LED color temperature**

- 4000K (K4)
- 3500K (K35)
- 3000K (K3)
- 2700K (K27)

**BEGA** can supply you with suitable LED replacement modules for up to 20 years after the purchase of LED luminaires - see website for details



**In-grade luminaire · Adjustable · Wide beam**

	LED	β	A	B	C
<b>B84800</b>	24.1 W	17°	11	13 <sup>3</sup> / <sub>4</sub>	8 <sup>3</sup> / <sub>8</sub>

Type:

BEGA Product:

Project:

Modified:

**Available options**

DALI-2	Enabled for DALI control system
FSC	Fusing
NSL	Non-skid lens

**Included (available for pre-shipment)**

B70694	Installation housing
--------	----------------------

