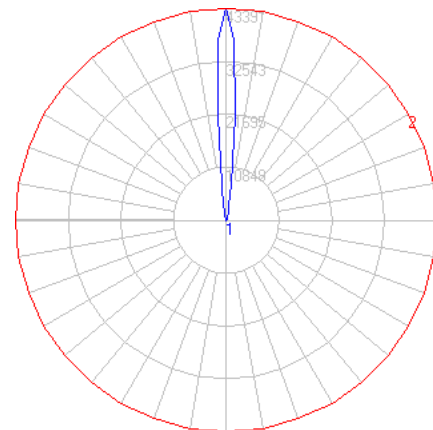
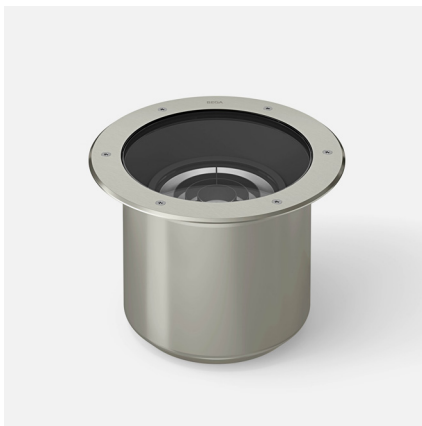


# BEGA

File: 84802K4\_BEGA\_IES.ies

TEST: 84802K4  
 TEST LAB: BEGA  
 DATE: 04/07/2021  
 LUMINAIRE: 84802K4  
 LAMP: 37.5W LED

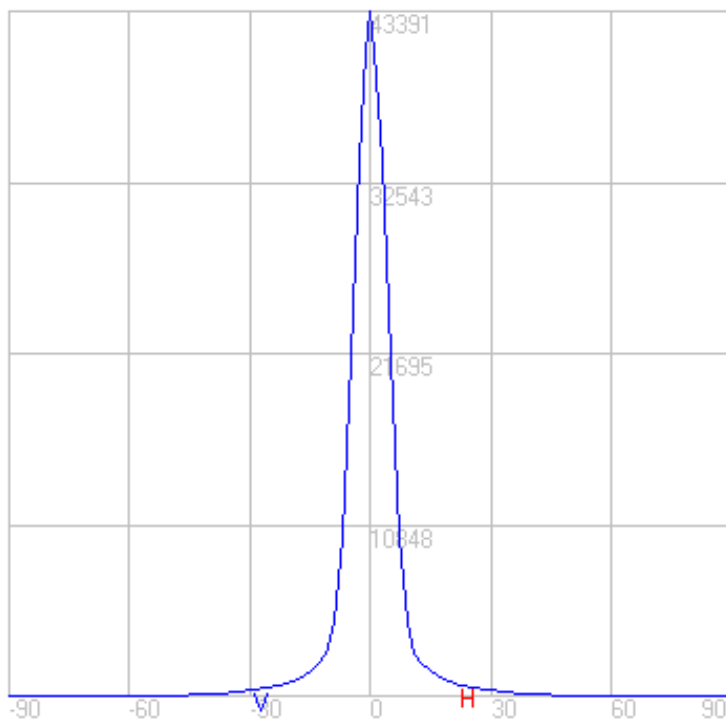
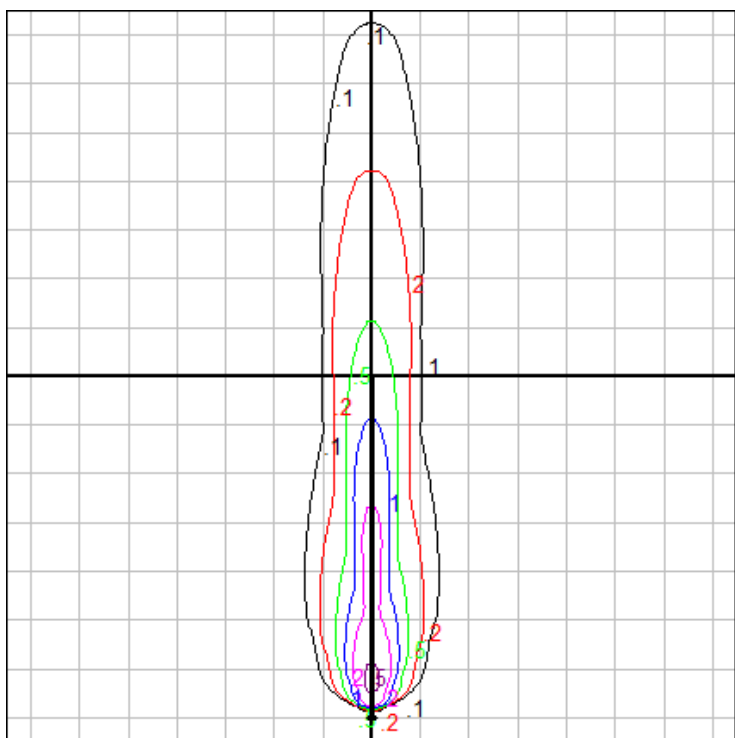


## Characteristics

NEMA Type	2 H x 2 V
Maximum Candela	43390.699
Maximum Candela Angle	0 H 0 V
Horizontal Beam Angle (50%)	9.9
Vertical Beam Angle (50%)	9.9
Horizontal Field Angle (10%)	18.7
Vertical Field Angle (10%)	18.7
Lumens Per Lamp	N.A. (absolute)
Total Lamp Lumens	N.A. (absolute)
Beam Lumens	762
Beam Efficiency	N.A.
Field Lumens	1321
Field Efficiency	N.A.
Spill Lumens	944
Luminaire Lumens	2265
Total Efficiency	N.A.
Total Luminaire Watts	44
Ballast Factor	1.00

## Zonal Lumen Summary

Zone	Lumens
0-10	1406.92
10-20	454.28
20-30	245.94
30-40	111.92
40-50	49.82
50-60	24.85
60-70	2.61
70-80	0.00
80-90	0.00
90-100	0.00
100-110	0.00
110-120	0.00
120-130	0.00
130-140	0.00
140-150	0.00
150-160	0.00
160-170	0.00
170-180	0.00



Setback Distance: 2.5 ft.

Grid Spacing: 7 ft.

In the interest of product improvement, BEGA reserves the right to make technical changes without notice.

BEGA 1000 Bega Way, Carpinteria, CA 93013 (805)684-0533 Fax (805)566-9474 www.bega-us.com © Copyright BEGA-US 2025

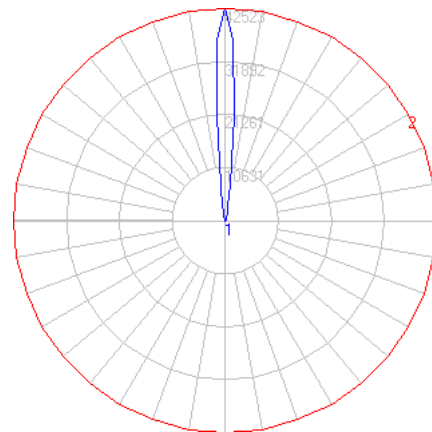
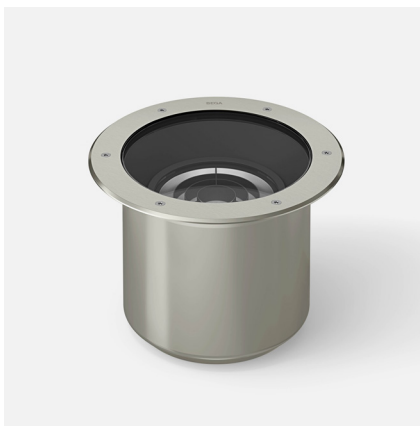
04/02/2026



# BEGA

File: 84802K3\_BEGA\_IES.ies

TEST: 84802K4  
 TEST LAB: BEGA  
 DATE: 04/07/2021  
 LUMINAIRE: 84802K3  
 LAMP: 37.5W LED

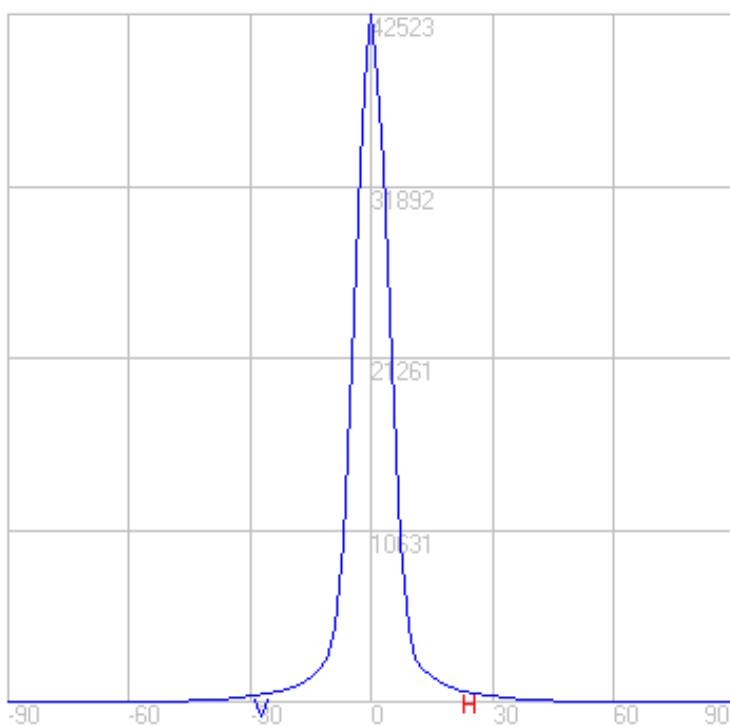
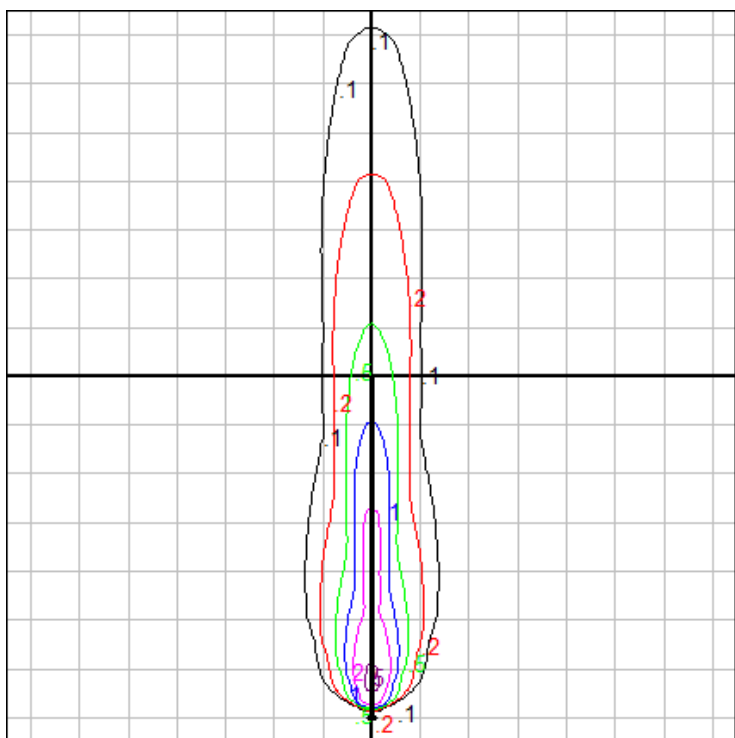


## Characteristics

NEMA Type	2 H x 2 V
Maximum Candela	42522.886
Maximum Candela Angle	0 H 0 V
Horizontal Beam Angle (50%)	9.9
Vertical Beam Angle (50%)	9.9
Horizontal Field Angle (10%)	18.7
Vertical Field Angle (10%)	18.7
Lumens Per Lamp	N.A. (absolute)
Total Lamp Lumens	N.A. (absolute)
Beam Lumens	746
Beam Efficiency	N.A.
Field Lumens	1294
Field Efficiency	N.A.
Spill Lumens	925
Luminaire Lumens	2220
Total Efficiency	N.A.
Total Luminaire Watts	44
Ballast Factor	1.00

## Zonal Lumen Summary

Zone	Lumens
0-10	1378.77
10-20	445.20
20-30	241.02
30-40	109.68
40-50	48.82
50-60	24.35
60-70	2.56
70-80	0.00
80-90	0.00
90-100	0.00
100-110	0.00
110-120	0.00
120-130	0.00
130-140	0.00
140-150	0.00
150-160	0.00
160-170	0.00
170-180	0.00



Setback Distance: 2.5 ft.

Grid Spacing: 7 ft.

In the interest of product improvement, BEGA reserves the right to make technical changes without notice.

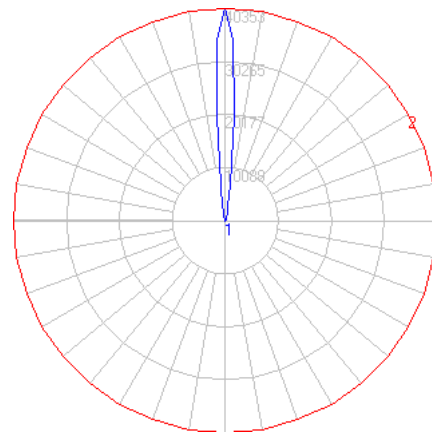
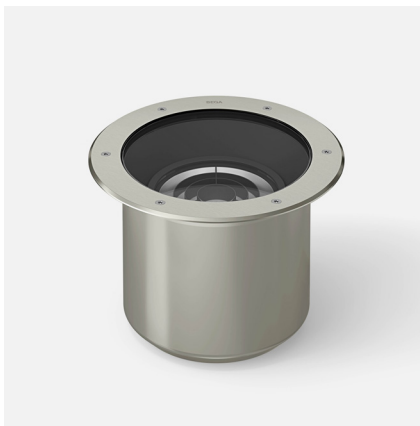
BEGA 1000 Bega Way, Carpinteria, CA 93013 (805)684-0533 Fax (805)566-9474 www.bega-us.com © Copyright BEGA-US 2025

04/02/2026

# BEGA

File: 84802K27\_BEGA\_IES.ies

TEST: 84802K4  
 TEST LAB: BEGA  
 DATE: 04/07/2021  
 LUMINAIRE: 84802K27  
 LAMP: 37.5W LED

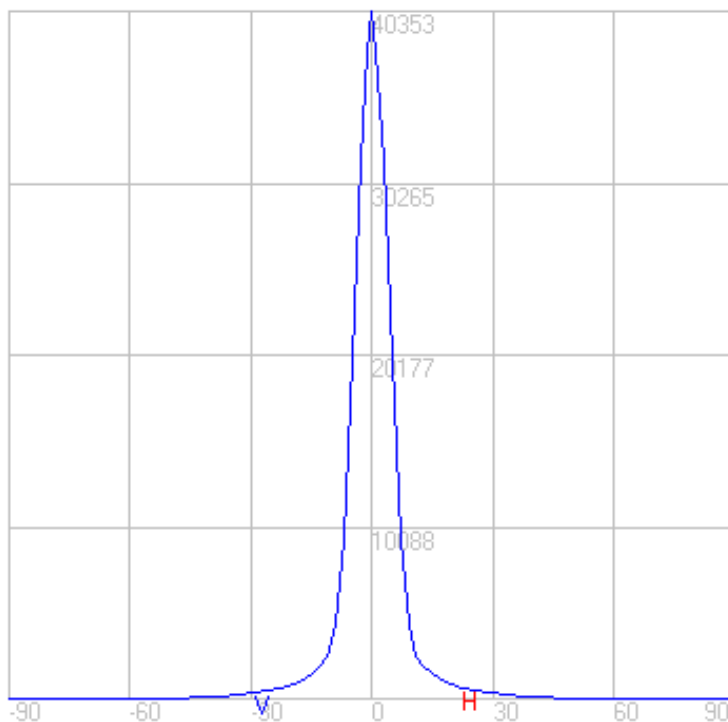
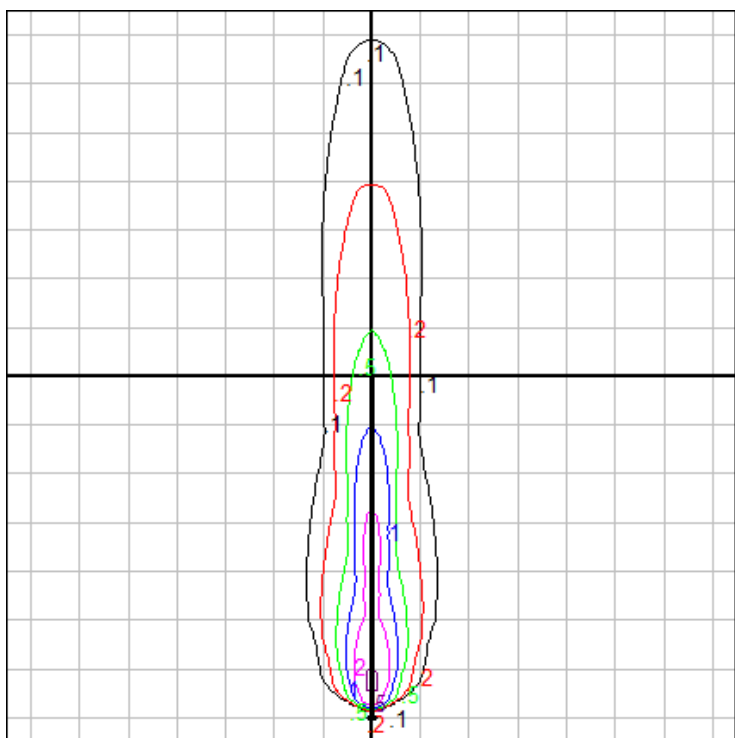


## Characteristics

NEMA Type	2 H x 2 V
Maximum Candela	40353.351
Maximum Candela Angle	0 H 0 V
Horizontal Beam Angle (50%)	9.9
Vertical Beam Angle (50%)	9.9
Horizontal Field Angle (10%)	18.7
Vertical Field Angle (10%)	18.7
Lumens Per Lamp	N.A. (absolute)
Total Lamp Lumens	N.A. (absolute)
Beam Lumens	708
Beam Efficiency	N.A.
Field Lumens	1228
Field Efficiency	N.A.
Spill Lumens	878
Luminaire Lumens	2106
Total Efficiency	N.A.
Total Luminaire Watts	44
Ballast Factor	1.00

## Zonal Lumen Summary

Zone	Lumens
0-10	1308.43
10-20	422.48
20-30	228.72
30-40	104.09
40-50	46.33
50-60	23.11
60-70	2.43
70-80	0.00
80-90	0.00
90-100	0.00
100-110	0.00
110-120	0.00
120-130	0.00
130-140	0.00
140-150	0.00
150-160	0.00
160-170	0.00
170-180	0.00



Setback Distance: 2.5 ft.

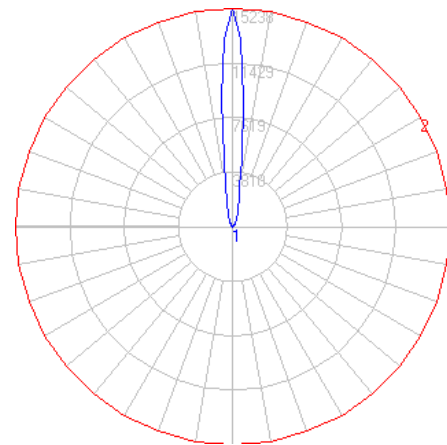
Grid Spacing: 7 ft.

In the interest of product improvement, BEGA reserves the right to make technical changes without notice.

# BEGA

File: 84802K4\_NSL\_BEGA\_IES.ies

TEST: 84802RK4  
 TEST LAB: BEGA  
 DATE: 04/07/2021  
 LUMINAIRE: 84802K4 + Non Skid Lens  
 LAMP: 37.5W LED

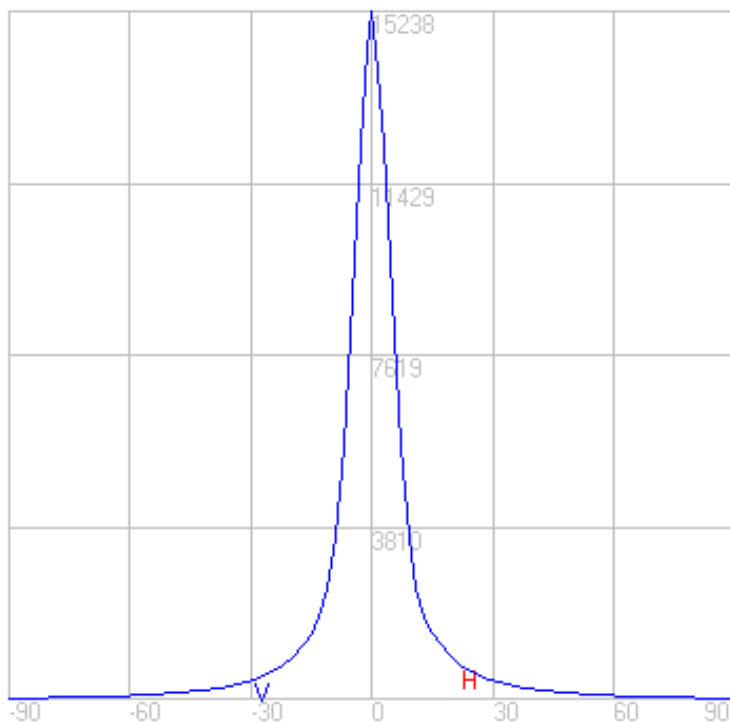
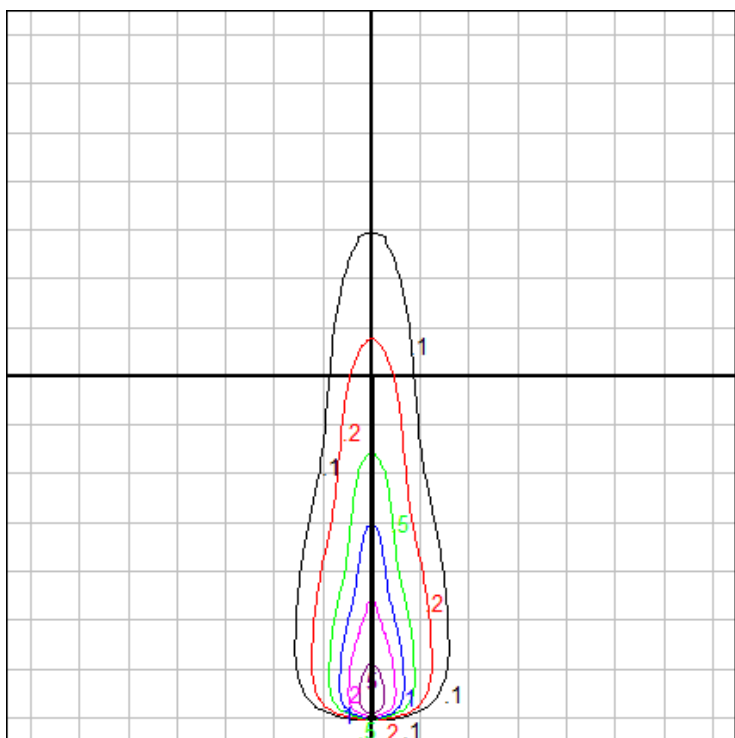


## Characteristics

NEMA Type	3 H x 3 V
Maximum Candela	15238
Maximum Candela Angle	0 H 0 V
Horizontal Beam Angle (50%)	11.6
Vertical Beam Angle (50%)	11.6
Horizontal Field Angle (10%)	29.2
Vertical Field Angle (10%)	29.2
Lumens Per Lamp	N.A. (absolute)
Total Lamp Lumens	N.A. (absolute)
Beam Lumens	324
Beam Efficiency	N.A.
Field Lumens	868
Field Efficiency	N.A.
Spill Lumens	989
Luminaire Lumens	1857
Total Efficiency	N.A.
Total Luminaire Watts	44
Ballast Factor	1.00

## Zonal Lumen Summary

Zone	Lumens
0-10	646.10
10-20	423.90
20-30	277.87
30-40	182.50
40-50	126.82
50-60	92.70
60-70	64.15
70-80	39.39
80-90	13.72
90-100	0.16
100-110	0.07
110-120	0.00
120-130	0.00
130-140	0.00
140-150	0.00
150-160	0.00
160-170	0.00
170-180	0.00



Setback Distance: 2.5 ft.

Grid Spacing: 7 ft.

In the interest of product improvement, BEGA reserves the right to make technical changes without notice.

BEGA 1000 Bega Way, Carpinteria, CA 93013 (805)684-0533 Fax (805)566-9474 www.bega-us.com © Copyright BEGA-US 2025

04/02/2026