

Application

An in-grade luminaire for installation in concrete or soil, and intended to provide a uniform wall wash. Designed to bear pressure loads up to 4,400 lbs. from vehicles with pneumatic tires. The luminaire must not be used for traffic lanes where it is subject to horizontal pressure from vehicles braking, accelerating or changing direction.

Materials

- Clear safety glass
- 316 grade stainless steel
- Fully potted waterstopper cable
- High temperature silicone gasket
- Stainless steel hardware
- Aluminum installation housing
- BEGA Hybrid Optics®

NRTL listed to North American Standards, suitable for wet locations
Protection class IP 68

Weight: 18.7 lbs.

Electrical

| | |
|---------------------------|--------------------------|
| Operating voltage | 120-277V AC |
| Minimum start temperature | -30° C |
| LED module wattage | 36.8 W |
| System wattage | 43.0 W |
| Controllability | 0-10V dimming down to 1% |
| Color rendering index | Ra > 90 |
| Luminaire lumens | 3707 lm |
| LED service life (L70) | 60000 hrs |

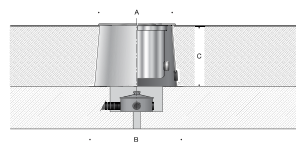
LED color temperature

- 4000K (K4)
- 3500K (K35)
- 3000K (K3)
- 2700K (K27)

BEGA can supply you with suitable LED replacement modules for up to 20 years after the purchase of LED luminaires - see website for details

Finish

#4 brushed stainless steel. Custom colors are not available.



In-grade luminaire · Adjustable · Wide beam

| | LED | β | A | B | C |
|---------------|--------|-----|--------------------------------|--------------------------------|----|
| B84803 | 36.8 W | 25° | 12 ⁷ / ₈ | 15 ¹ / ₂ | 10 |

Type:

BEGA Product:

Project:

Modified:

Available options

| | |
|--------|---------------------------------|
| DALI-2 | Enabled for DALI control system |
| FSC | Fusing |
| NSL | Non-skid lens |

Included (available for pre-shipment)

| | |
|------|----------------------|
| B688 | Installation housing |
|------|----------------------|

