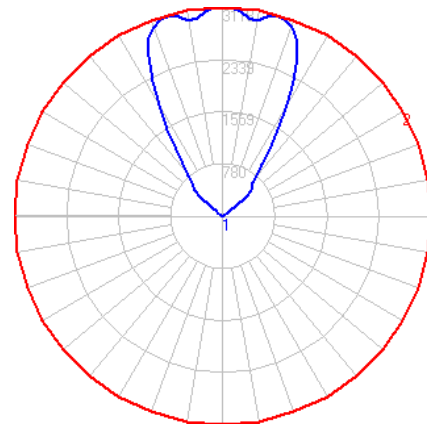


BEGA

File: 84804K4_BEGA_IES.ies

TEST: 84804K4
 TEST LAB: BEGA
 DATE: 04/08/2021
 LUMINAIRE: 84804K4
 LAMP: 35.9W LED

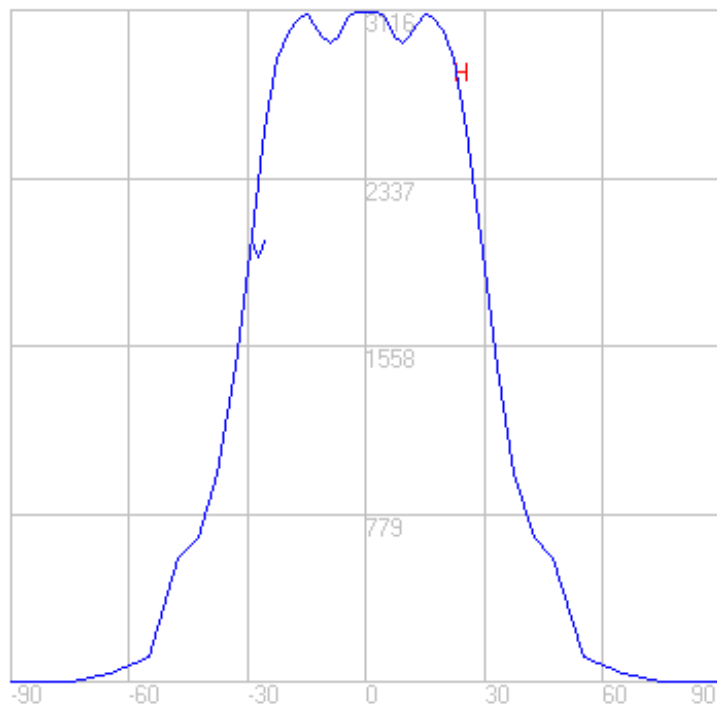
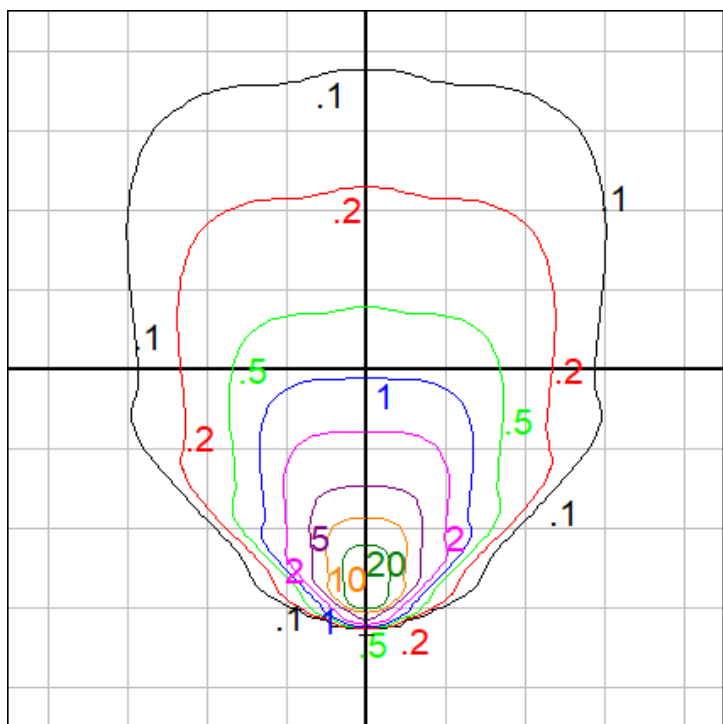


Characteristics

NEMA Type	6 H x 6 V
Maximum Candela	3116.3
Maximum Candela Angle	-1 H -1 V
Horizontal Beam Angle (50%)	64.8
Vertical Beam Angle (50%)	64.8
Horizontal Field Angle (10%)	103.6
Vertical Field Angle (10%)	103.6
Lumens Per Lamp	N.A. (absolute)
Total Lamp Lumens	N.A. (absolute)
Beam Lumens	2607
Beam Efficiency	N.A.
Field Lumens	3643
Field Efficiency	N.A.
Spill Lumens	153
Luminaire Lumens	3796
Total Efficiency	N.A.
Total Luminaire Watts	43
Ballast Factor	1.00

Zonal Lumen Summary

Zone	Lumens
0-10	288.45
10-20	866.61
20-30	1173.75
30-40	781.80
40-50	479.70
50-60	148.92
60-70	36.88
70-80	3.62
80-90	0.00
90-100	0.00
100-110	0.00
110-120	0.00
120-130	0.00
130-140	0.00
140-150	0.00
150-160	0.00
160-170	0.00
170-180	0.00



Setback Distance: 2.5 ft.

Grid Spacing: 6 ft.

In the interest of product improvement, BEGA reserves the right to make technical changes without notice.

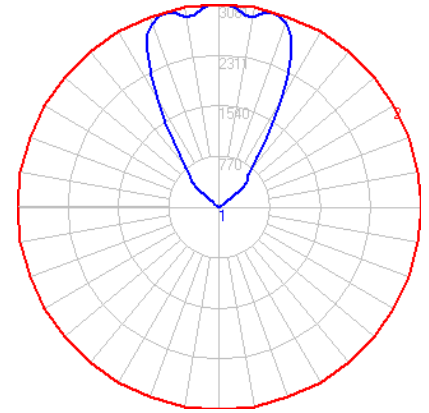
BEGA 1000 Bega Way, Carpinteria, CA 93013 (805)684-0533 Fax (805)566-9474 www.bega-us.com © Copyright BEGA-US 2025

04/20/2026

BEGA

File: 84804K35_BEGA_IES.ies

TEST: 84804K4
 TEST LAB: BEGA
 DATE: 04/08/2021
 LUMINAIRE: 84804K35
 LAMP: 35.9W LED

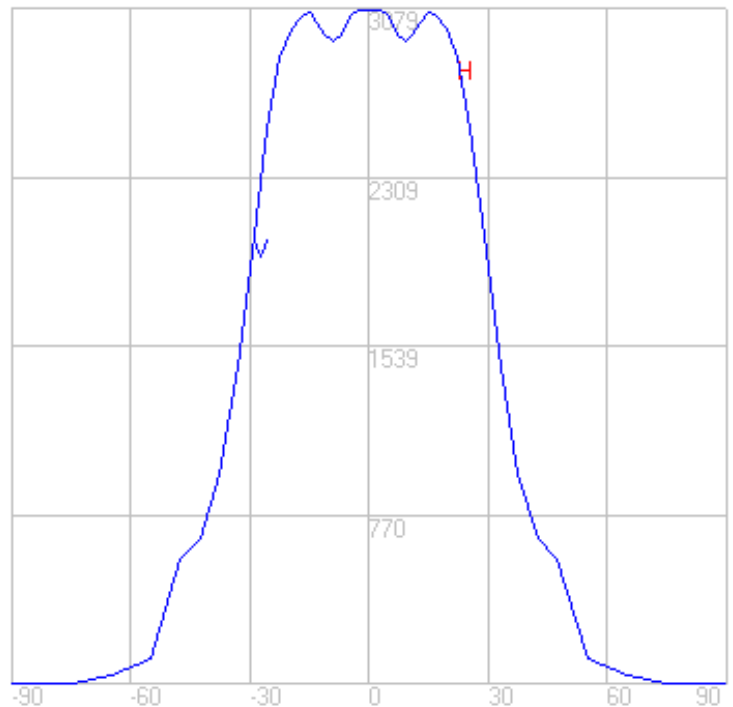
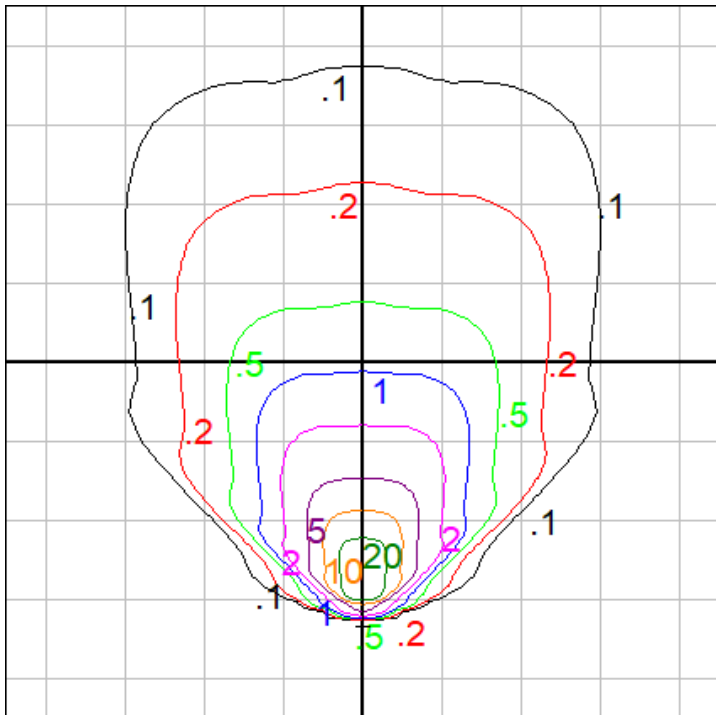


Characteristics

NEMA Type	6 H x 6 V
Maximum Candela	3078.919
Maximum Candela Angle	-1 H -1 V
Horizontal Beam Angle (50%)	64.8
Vertical Beam Angle (50%)	64.8
Horizontal Field Angle (10%)	103.6
Vertical Field Angle (10%)	103.6
Lumens Per Lamp	N.A. (absolute)
Total Lamp Lumens	N.A. (absolute)
Beam Lumens	2575
Beam Efficiency	N.A.
Field Lumens	3600
Field Efficiency	N.A.
Spill Lumens	151
Luminaire Lumens	3751
Total Efficiency	N.A.
Total Luminaire Watts	43
Ballast Factor	1.00

Zonal Lumen Summary

Zone	Lumens
0-10	284.99
10-20	856.21
20-30	1159.67
30-40	772.42
40-50	473.94
50-60	147.13
60-70	36.44
70-80	3.57
80-90	0.00
90-100	0.00
100-110	0.00
110-120	0.00
120-130	0.00
130-140	0.00
140-150	0.00
150-160	0.00
160-170	0.00
170-180	0.00



Setback Distance: 2.5 ft.

Grid Spacing: 6 ft.

In the interest of product improvement, BEGA reserves the right to make technical changes without notice.

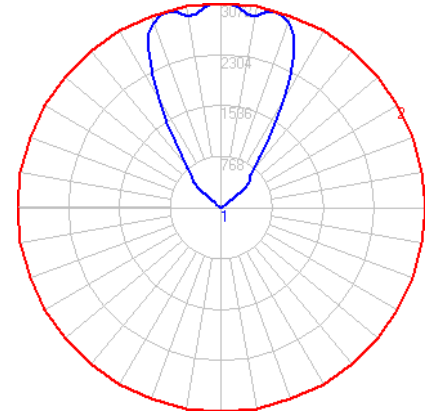
BEGA 1000 Bega Way, Carpinteria, CA 93013 (805)684-0533 Fax (805)566-9474 www.bega-us.com © Copyright BEGA-US 2025

04/20/2026

BEGA

File: 84804K3_BEGA_IES.ies

TEST: 84804K4
 TEST LAB: BEGA
 DATE: 04/08/2021
 LUMINAIRE: 84804K3
 LAMP: 35.9W LED

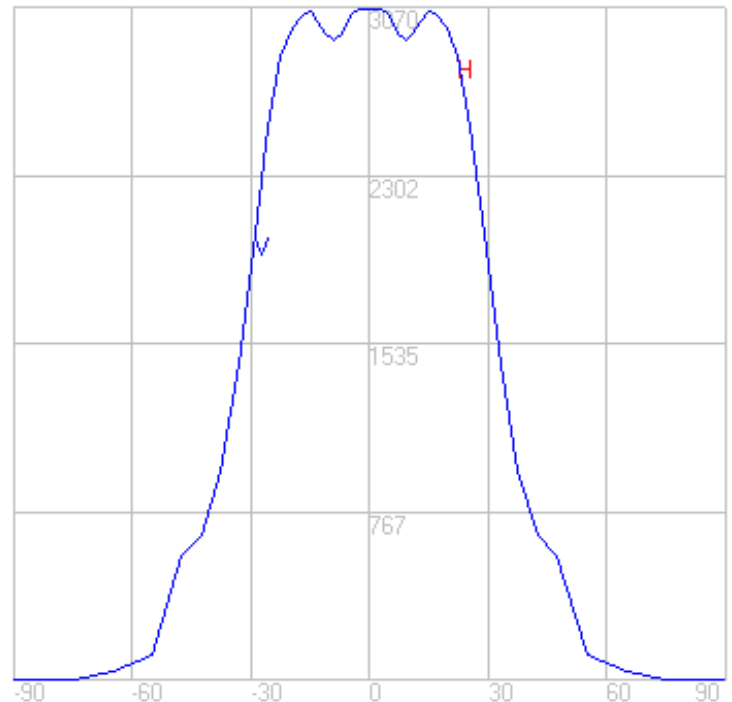
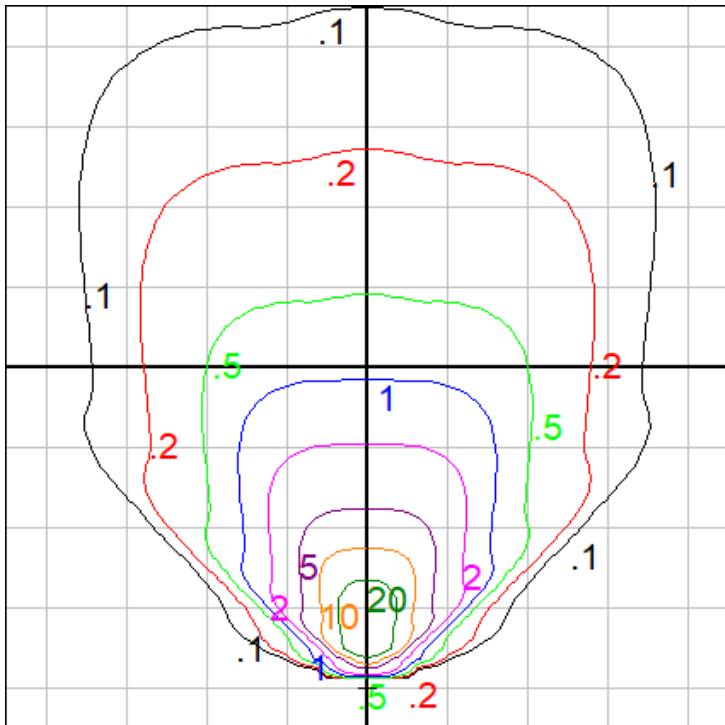


Characteristics

NEMA Type	6 H x 6 V
Maximum Candela	3069.571
Maximum Candela Angle	-1 H -1 V
Horizontal Beam Angle (50%)	64.8
Vertical Beam Angle (50%)	64.8
Horizontal Field Angle (10%)	103.6
Vertical Field Angle (10%)	103.6
Lumens Per Lamp	N.A. (absolute)
Total Lamp Lumens	N.A. (absolute)
Beam Lumens	2567
Beam Efficiency	N.A.
Field Lumens	3589
Field Efficiency	N.A.
Spill Lumens	151
Luminaire Lumens	3739
Total Efficiency	N.A.
Total Luminaire Watts	43
Ballast Factor	1.00

Zonal Lumen Summary

Zone	Lumens
0-10	284.12
10-20	853.61
20-30	1156.14
30-40	770.07
40-50	472.51
50-60	146.69
60-70	36.33
70-80	3.56
80-90	0.00
90-100	0.00
100-110	0.00
110-120	0.00
120-130	0.00
130-140	0.00
140-150	0.00
150-160	0.00
160-170	0.00
170-180	0.00



Setback Distance: 2.5 ft.

Grid Spacing: 5 ft.

In the interest of product improvement, BEGA reserves the right to make technical changes without notice.

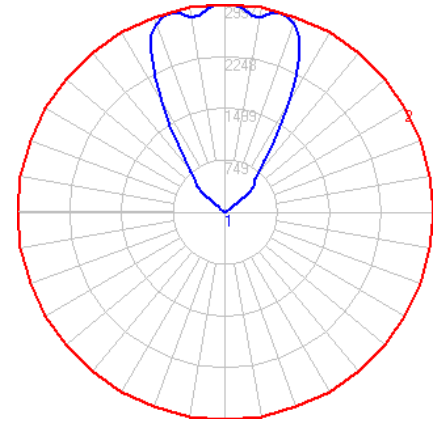
BEGA 1000 Bega Way, Carpinteria, CA 93013 (805)684-0533 Fax (805)566-9474 www.bega-us.com © Copyright BEGA-US 2025

04/20/2026

BEGA

File: 84804K27_BEGA_IES.ies

TEST: 84804K4
 TEST LAB: BEGA
 DATE: 04/08/2021
 LUMINAIRE: 84804K27
 LAMP: 35.9W LED

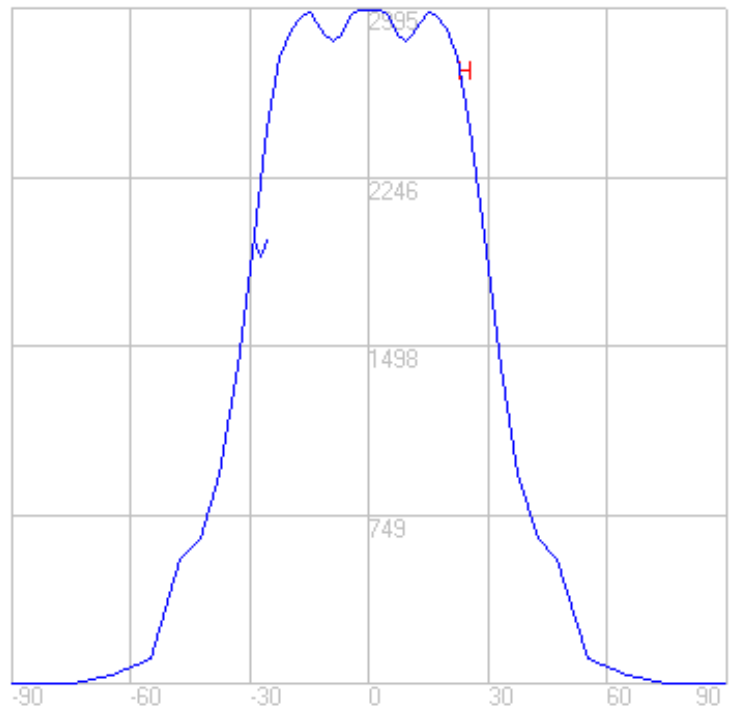
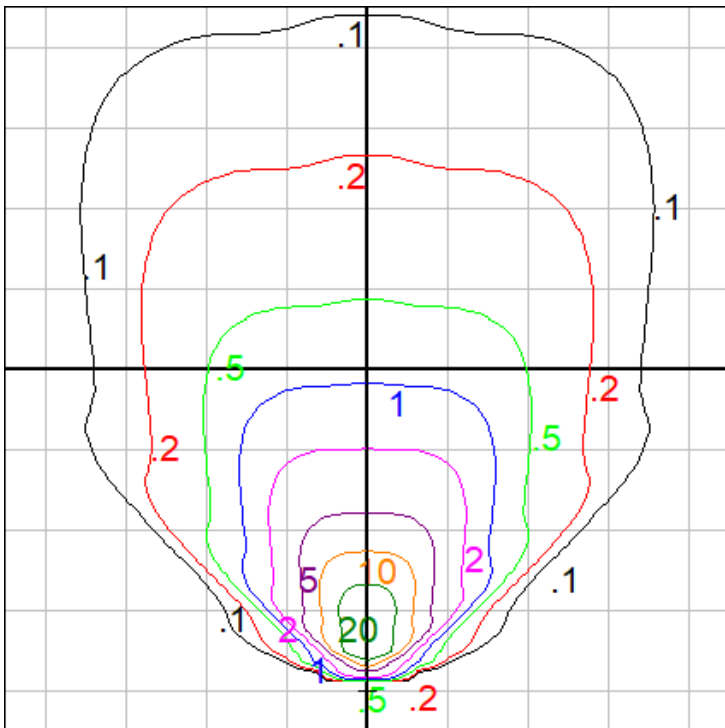


Characteristics

NEMA Type	6 H x 6 V
Maximum Candela	2995.09
Maximum Candela Angle	-1 H -1 V
Horizontal Beam Angle (50%)	64.8
Vertical Beam Angle (50%)	64.8
Horizontal Field Angle (10%)	103.6
Vertical Field Angle (10%)	103.6
Lumens Per Lamp	N.A. (absolute)
Total Lamp Lumens	N.A. (absolute)
Beam Lumens	2505
Beam Efficiency	N.A.
Field Lumens	3502
Field Efficiency	N.A.
Spill Lumens	147
Luminaire Lumens	3649
Total Efficiency	N.A.
Total Luminaire Watts	43
Ballast Factor	1.00

Zonal Lumen Summary

Zone	Lumens
0-10	277.23
10-20	832.90
20-30	1128.09
30-40	751.39
40-50	461.04
50-60	143.13
60-70	35.45
70-80	3.48
80-90	0.00
90-100	0.00
100-110	0.00
110-120	0.00
120-130	0.00
130-140	0.00
140-150	0.00
150-160	0.00
160-170	0.00
170-180	0.00



Setback Distance: 2.5 ft.

Grid Spacing: 5 ft.

In the interest of product improvement, BEGA reserves the right to make technical changes without notice.

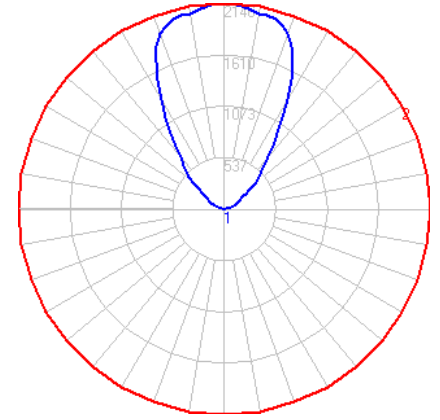
BEGA 1000 Bega Way, Carpinteria, CA 93013 (805)684-0533 Fax (805)566-9474 www.bega-us.com © Copyright BEGA-US 2025

04/20/2026

BEGA

File: 84804K4_NSL_BEGA_IES.ies

TEST: 84804RK4
 TEST LAB: BEGA
 DATE: 04/08/2021
 LUMINAIRE: 84804K4 + Non Skid Lens
 LAMP: 35.9W LED

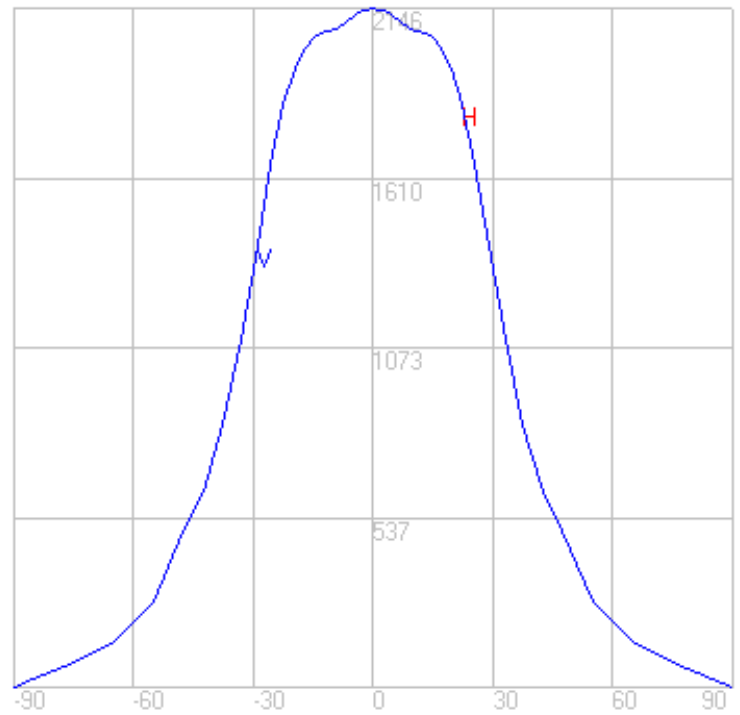
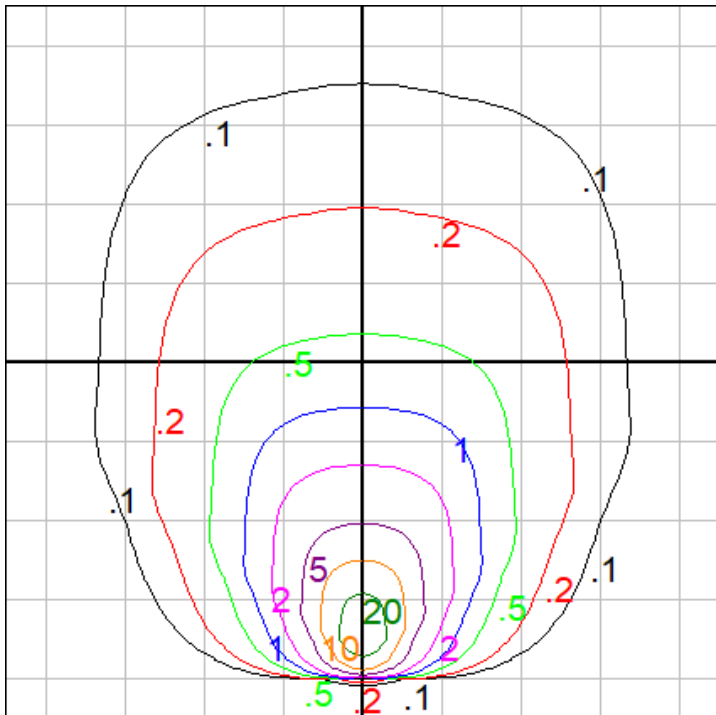


Characteristics

NEMA Type	6 H x 6 V
Maximum Candela	2146.2
Maximum Candela Angle	0 H 0 V
Horizontal Beam Angle (50%)	66.9
Vertical Beam Angle (50%)	66.9
Horizontal Field Angle (10%)	119.1
Vertical Field Angle (10%)	119.1
Lumens Per Lamp	N.A. (absolute)
Total Lamp Lumens	N.A. (absolute)
Beam Lumens	1773
Beam Efficiency	N.A.
Field Lumens	2787
Field Efficiency	N.A.
Spill Lumens	317
Luminaire Lumens	3105
Total Efficiency	N.A.
Total Luminaire Watts	43
Ballast Factor	1.00

Zonal Lumen Summary

Zone	Lumens
0-10	646.10
10-20	423.90
20-30	277.87
30-40	182.50
40-50	126.82
50-60	92.70
60-70	64.15
70-80	39.39
80-90	13.72
90-100	0.16
100-110	0.07
110-120	0.00
120-130	0.00
130-140	0.00
140-150	0.00
150-160	0.00
160-170	0.00
170-180	0.00



Setback Distance: 2.5 ft.

Grid Spacing: 5 ft.

In the interest of product improvement, BEGA reserves the right to make technical changes without notice.

BEGA 1000 Bega Way, Carpinteria, CA 93013 (805)684-0533 Fax (805)566-9474 www.bega-us.com © Copyright BEGA-US 2025

04/20/2026