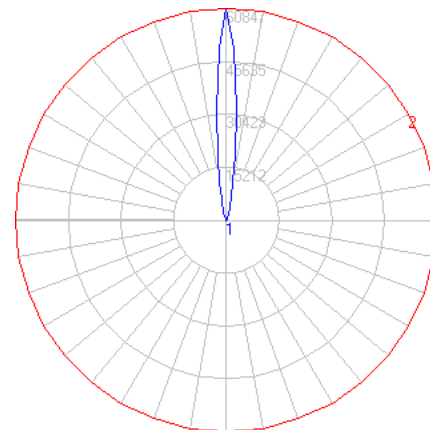
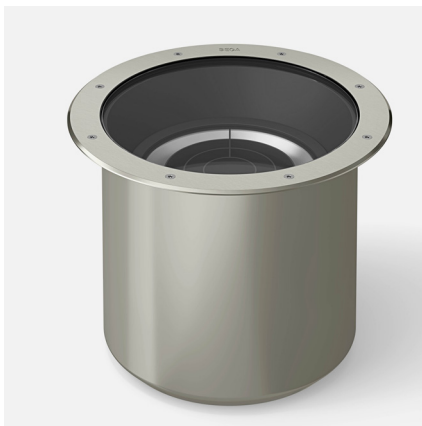


BEGA

File: 84891K4_BEGA_IES.ies

TEST: 84891K4
 TEST LAB: BEGA
 DATE: 08/04/21
 LUMINAIRE: 84891K4
 LAMP: 72.9W LED

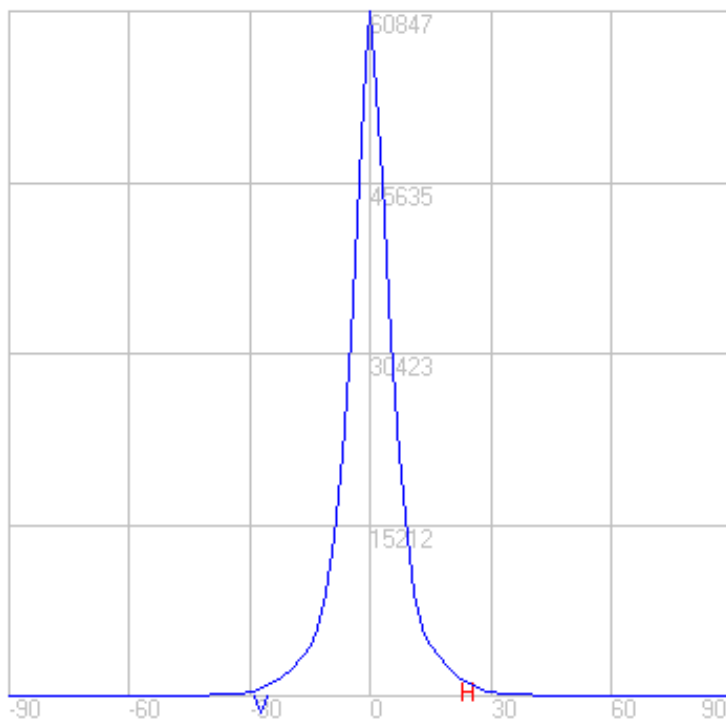
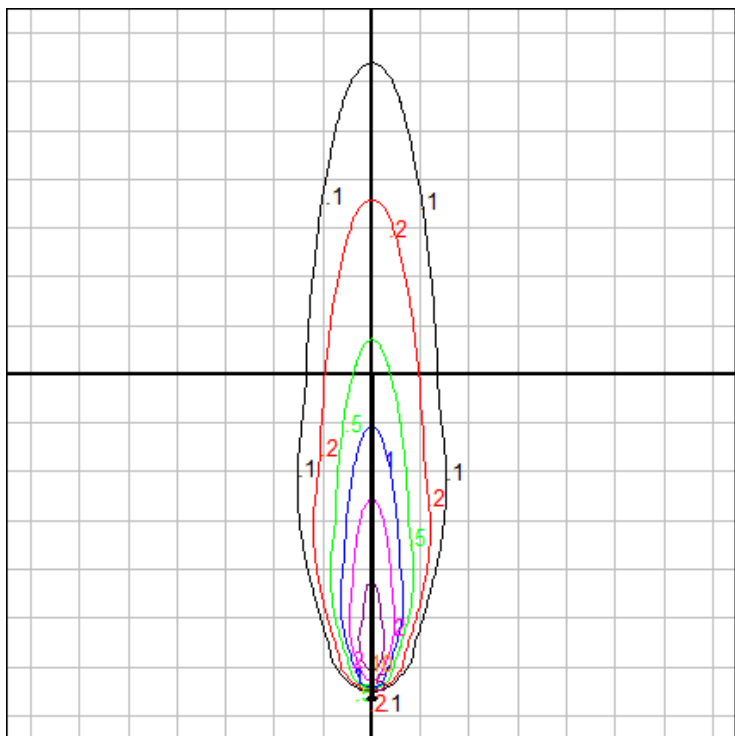


Characteristics

NEMA Type	2 H x 2 V
Maximum Candela	60846.699
Maximum Candela Angle	0 H 0 V
Horizontal Beam Angle (50%)	10.5
Vertical Beam Angle (50%)	10.5
Horizontal Field Angle (10%)	26.0
Vertical Field Angle (10%)	26.0
Lumens Per Lamp	N.A. (absolute)
Total Lamp Lumens	N.A. (absolute)
Beam Lumens	1067
Beam Efficiency	N.A.
Field Lumens	2955
Field Efficiency	N.A.
Spill Lumens	1450
Luminaire Lumens	4405
Total Efficiency	N.A.
Total Luminaire Watts	84
Ballast Factor	1.00

Zonal Lumen Summary

Zone	Lumens
0-10	2435.84
10-20	1373.23
20-30	478.02
30-40	103.57
40-50	39.60
50-60	13.65
60-70	0.94
70-80	0.00
80-90	0.00
90-100	0.00
100-110	0.00
110-120	0.00
120-130	0.00
130-140	0.00
140-150	0.00
150-160	0.00
160-170	0.00
170-180	0.00



Setback Distance: 3 ft.

Grid Spacing: 9 ft.

In the interest of product improvement, BEGA reserves the right to make technical changes without notice.

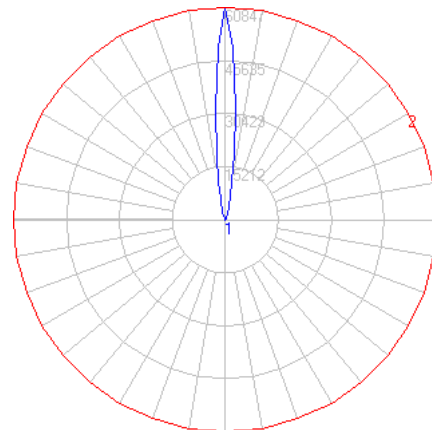
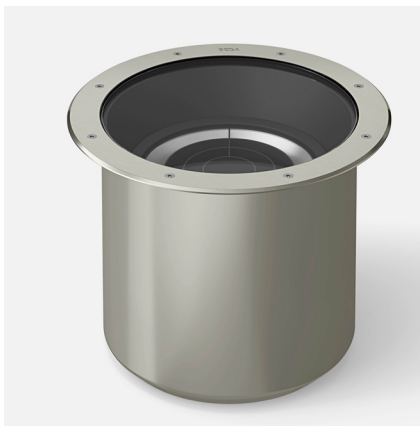
BEGA 1000 Bega Way, Carpinteria, CA 93013 (805)684-0533 Fax (805)566-9474 www.bega-us.com © Copyright BEGA-US 2025

04/07/26

BEGA

File: 84891K35_BEGA_IES.ies

TEST: 84891K4
 TEST LAB: BEGA
 DATE: 08/04/21
 LUMINAIRE: 84891K35
 LAMP: 72.9W LED

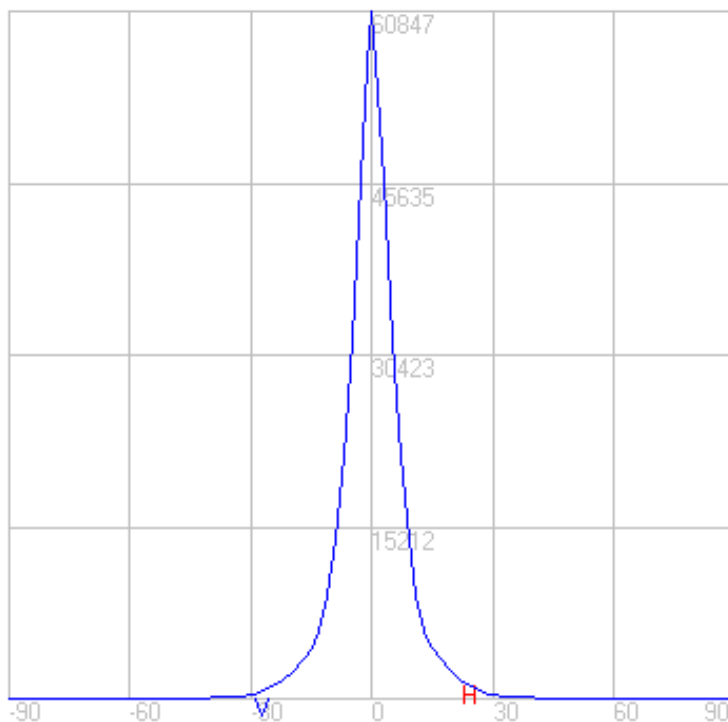
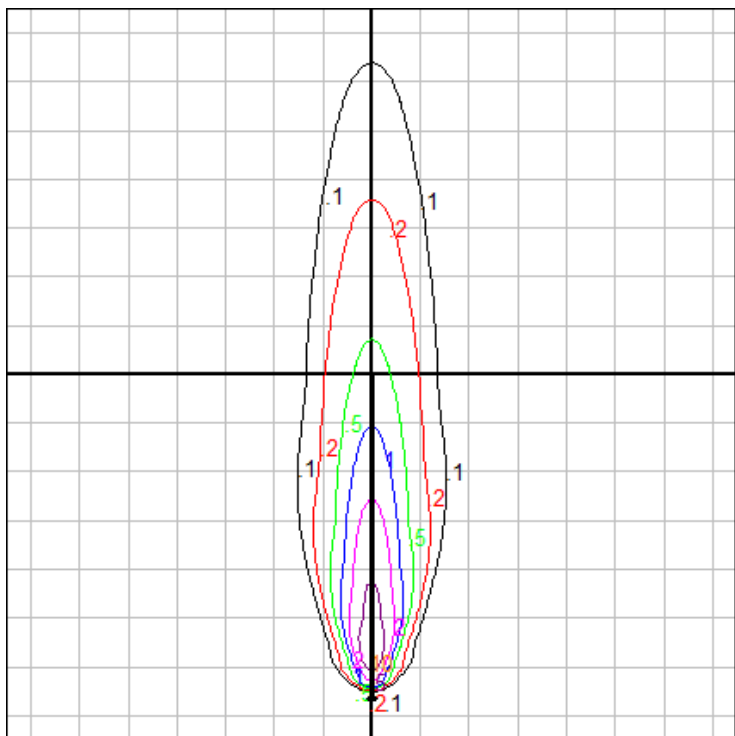


Characteristics

NEMA Type	2 H x 2 V
Maximum Candela	60846.699
Maximum Candela Angle	0 H 0 V
Horizontal Beam Angle (50%)	10.5
Vertical Beam Angle (50%)	10.5
Horizontal Field Angle (10%)	26.0
Vertical Field Angle (10%)	26.0
Lumens Per Lamp	N.A. (absolute)
Total Lamp Lumens	N.A. (absolute)
Beam Lumens	1067
Beam Efficiency	N.A.
Field Lumens	2955
Field Efficiency	N.A.
Spill Lumens	1450
Luminaire Lumens	4405
Total Efficiency	N.A.
Total Luminaire Watts	84
Ballast Factor	1.00

Zonal Lumen Summary

Zone	Lumens
0-10	2435.84
10-20	1373.23
20-30	478.02
30-40	103.57
40-50	39.60
50-60	13.65
60-70	0.94
70-80	0.00
80-90	0.00
90-100	0.00
100-110	0.00
110-120	0.00
120-130	0.00
130-140	0.00
140-150	0.00
150-160	0.00
160-170	0.00
170-180	0.00



Setback Distance: 3 ft.

Grid Spacing: 9 ft.

In the interest of product improvement, BEGA reserves the right to make technical changes without notice.

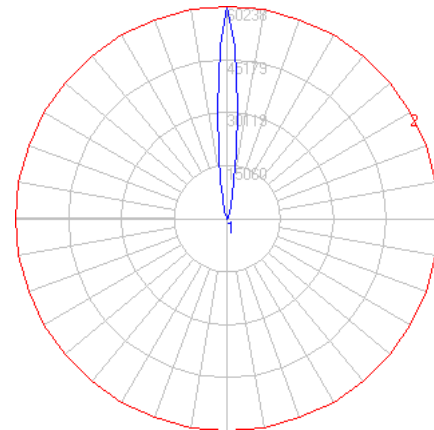
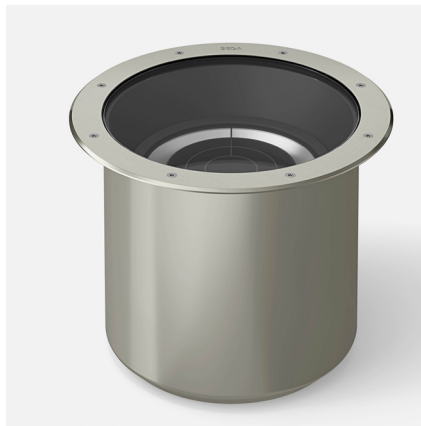
BEGA 1000 Bega Way, Carpinteria, CA 93013 (805)684-0533 Fax (805)566-9474 www.bega-us.com © Copyright BEGA-US 2025

04/07/26

BEGA

File: 84891K3_BEGA_IES.ies

TEST: 84891K4
 TEST LAB: BEGA
 DATE: 08/04/21
 LUMINAIRE: 84891K3
 LAMP: 72.9W LED

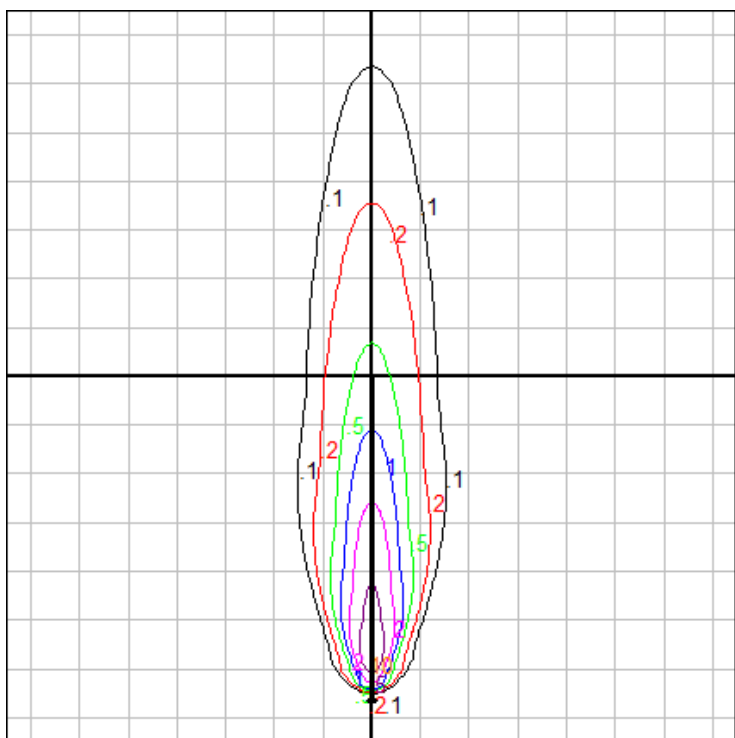


Characteristics

NEMA Type	2 H x 2 V
Maximum Candela	60238.233
Maximum Candela Angle	0 H 0 V
Horizontal Beam Angle (50%)	10.5
Vertical Beam Angle (50%)	10.5
Horizontal Field Angle (10%)	26.0
Vertical Field Angle (10%)	26.0
Lumens Per Lamp	N.A. (absolute)
Total Lamp Lumens	N.A. (absolute)
Beam Lumens	1056
Beam Efficiency	N.A.
Field Lumens	2926
Field Efficiency	N.A.
Spill Lumens	1435
Luminaire Lumens	4361
Total Efficiency	N.A.
Total Luminaire Watts	84
Ballast Factor	1.00

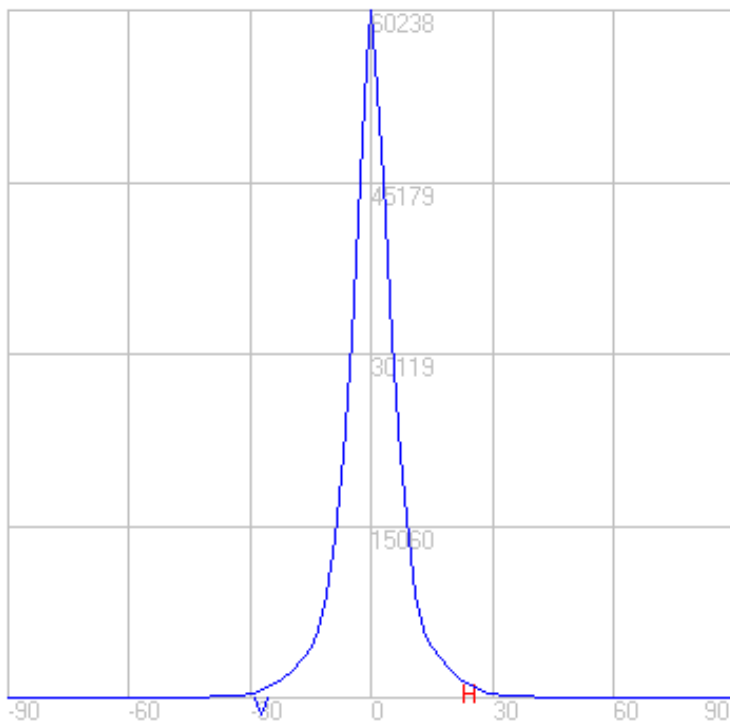
Zonal Lumen Summary

Zone	Lumens
0-10	2411.48
10-20	1359.51
20-30	473.24
30-40	102.53
40-50	39.21
50-60	13.51
60-70	0.93
70-80	0.00
80-90	0.00
90-100	0.00
100-110	0.00
110-120	0.00
120-130	0.00
130-140	0.00
140-150	0.00
150-160	0.00
160-170	0.00
170-180	0.00



Setback Distance: 3 ft.

Grid Spacing: 9 ft.



In the interest of product improvement, BEGA reserves the right to make technical changes without notice.

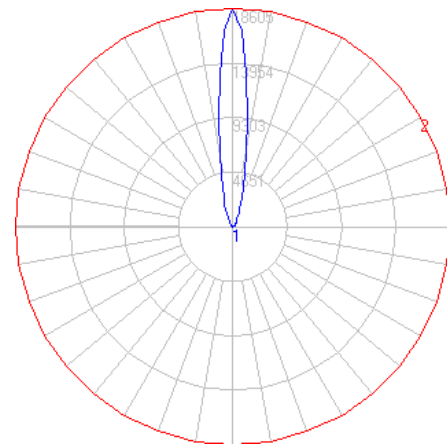
BEGA 1000 Bega Way, Carpinteria, CA 93013 (805)684-0533 Fax (805)566-9474 www.bega-us.com © Copyright BEGA-US 2025

04/07/26

BEGA

File: 84891K4_NSL_BEGA_IES.ies

TEST: 84891RK4
 TEST LAB: BEGA
 DATE: 08/04/21
 LUMINAIRE: 84891K4 + Non Skid Lens
 LAMP: 72.9W LED

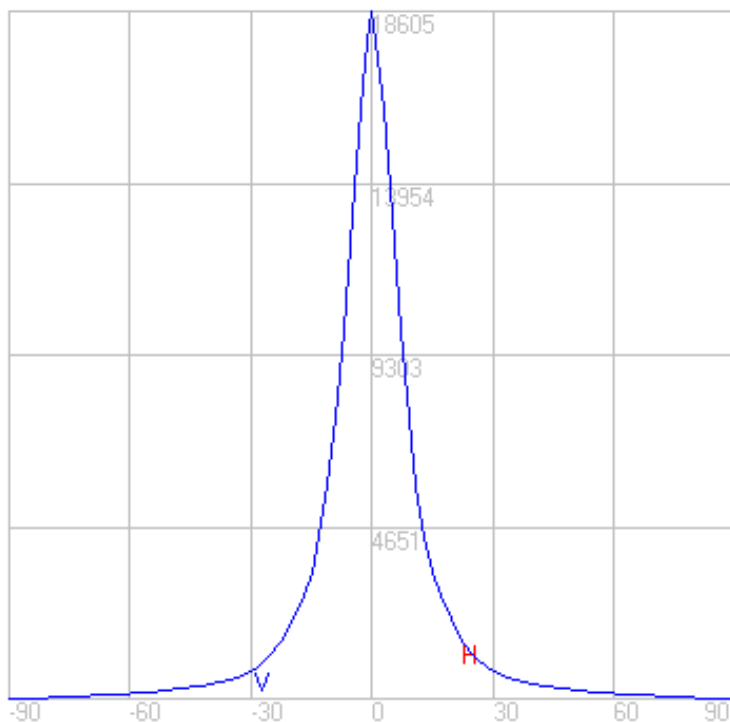
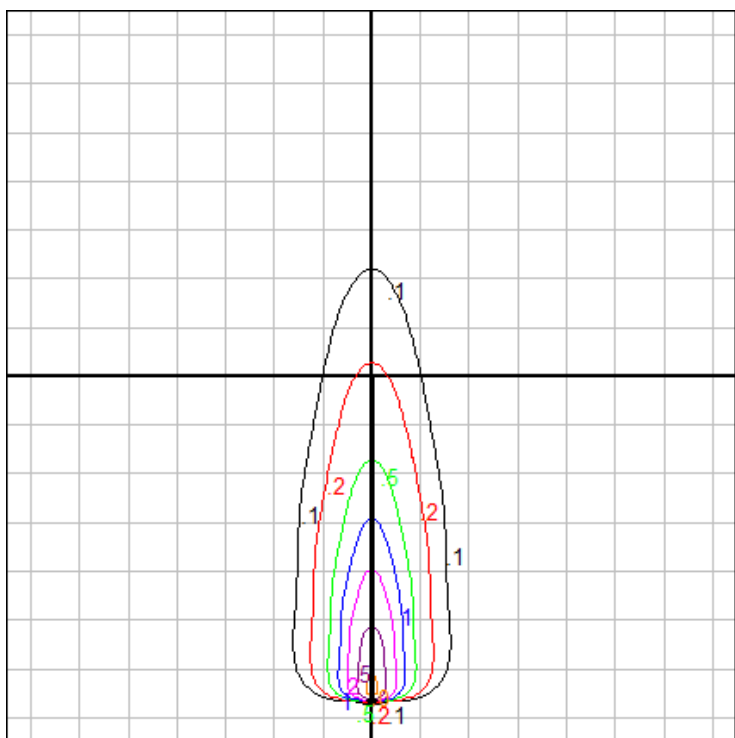


Characteristics

NEMA Type	3 H x 3 V
Maximum Candela	18605.199
Maximum Candela Angle	0 H 0 V
Horizontal Beam Angle (50%)	15.2
Vertical Beam Angle (50%)	15.2
Horizontal Field Angle (10%)	41.9
Vertical Field Angle (10%)	41.9
Lumens Per Lamp	N.A. (absolute)
Total Lamp Lumens	N.A. (absolute)
Beam Lumens	700
Beam Efficiency	N.A.
Field Lumens	2055
Field Efficiency	N.A.
Spill Lumens	1525
Luminaire Lumens	3580
Total Efficiency	N.A.
Total Luminaire Watts	84
Ballast Factor	1.00

Zonal Lumen Summary

Zone	Lumens
0-10	1034.56
10-20	1000.58
20-30	567.86
30-40	327.62
40-50	232.03
50-60	177.44
60-70	133.46
70-80	86.04
80-90	30.94
90-100	0.40
100-110	0.00
110-120	0.00
120-130	0.00
130-140	0.00
140-150	0.00
150-160	0.00
160-170	0.00
170-180	0.00



Setback Distance: 3 ft.

Grid Spacing: 9 ft.

In the interest of product improvement, BEGA reserves the right to make technical changes without notice.

BEGA 1000 Bega Way, Carpinteria, CA 93013 (805)684-0533 Fax (805)566-9474 www.bega-us.com © Copyright BEGA-US 2025

04/07/26