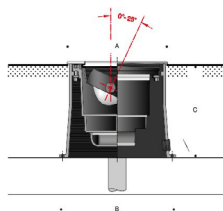


Tools Required:

- T40 screwdriver
- 6mm hex head screwdriver
- 3mm hex head screwdriver

Overview:

LED Watts: 25.7 W
 System Watts: 30 W
 Controllability: TRIAC, ELV, 0-10V dimming
 Weight: 17.4 lbs.
 Protection Class: IP68



Dimensions

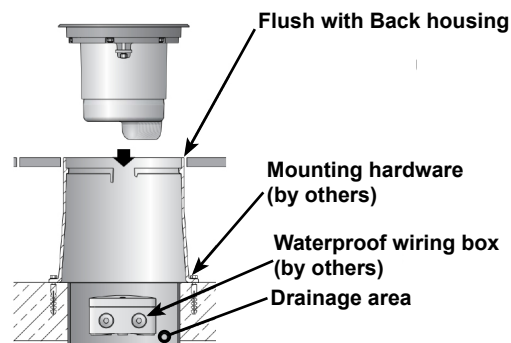
A: 9-1/2"
 B: 10-7/8"
 C: 9"



Notice to Installer:

1. See page 2 for specific product safety warnings.
2. A foundation must accommodate the luminaire's max pressure load of 11,000 lbs. (5,000 kg.). The pressure load transfers to the foundation provided by the customer through the housing.
3. The installation housing must be set in concrete for drive over applications.
4. Aggressive chemicals can compromise the luminaire from the surface and avoid excessive de-icing agents near the luminaire.
5. The luminaire is sealed from the factory; it should only be opened if maintenance is required on the internal electrical components, or to adjust optics.
6. Do not use power tools to open and close fixture, use hand tools only. Failure to do so can result in incorrect sealing of fixture and void warranty.
7. Do not install luminaire housing in heat-insulating material.
8. At least 6" of drainage (pea gravel recommended) must be provided in the foundation to allow surface water to drain from the recessed housing.
9. A customer-provided waterproof wiring box is required to connect the luminaire to the supply power. The waterproof wiring box must be installed directly under the luminaire as shown in Figure 1.
10. Luminaire supplied with 8 ft. whip exiting the fixture.

Figure 1: Mounting



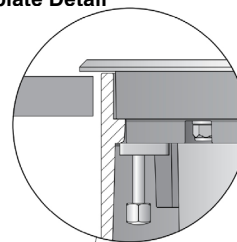
Installation: BB84454 - Installation Housing

1. Position back housing on the stable foundation; anchor using hardware (by others). [Figure 1]
2. The finished surface must be level with or below the upper edge of the recessed housing to guarantee a proper seal of the luminaire faceplate. [Figure 1] [Figure 2]

Installation: Luminaire

1. Connect luminaire incoming supply wiring at wiring box:
 MAIN VOLTAGE SUPPLY WIRE TO BLACK WIRE;
 NEUTRAL COMMON SUPPLY WIRE TO WHITE WIRE;
 GREEN GROUND WIRE TO GREEN WIRE;
 Dimming (0-10V):
 DIMMING CONTROL WIRE (+) TO (+) DIM CONTROL WIRE;
 DIMMING CONTROL WIRE (-) TO (-) DIM CONTROL WIRE;
2. Insert the luminaire housing into the outer housing, turn it clockwise and align as needed until it stops.
3. To secure the luminaire in the outer housing, loosen the (6) screws on the luminaire faceplate using a T40 screwdriver to remove the stainless steel trim ring and evenly tighten the (2) 6mm hex head screws to engage the clamping system.
4. Replace faceplate by tightening the (6) T40 screws in a star pattern (torque = 12 Nm./8.85 ft-lb).

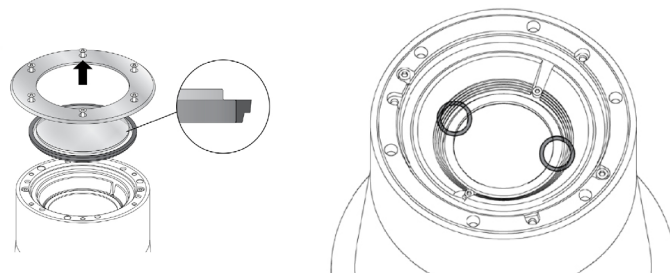
Figure 2: Faceplate Detail



Installation: Optical Assembly Adjustment

1. Loosen (6) screws on the luminaire faceplate using a T40 screwdriver and remove glass.
2. Loosen (2) 3mm hex head adjustment screws; adjust optical assembly by applying pressure in the area circled in Figure 3. Tighten adjustment screws when complete.
3. Reinstall the glass ensuring the gasket is positioned properly then install the faceplate over the glass.
4. Tighten the screws on luminaire faceplate to secure it in the installation housing (Torque = 6.5Nm./4.8 ft-lb). Tighten the faceplate in a star pattern tightly to seal correctly.

Figure 3: Optical Assembly Adjustment (Generic Image)



Accessories

Please refer to the appropriate accessory installation sheet for further instruction when applicable.

Maintenance:

Routinely clean stainless steel with a solution of warm water and gentle detergent or stainless steel cleaner. For installation in more corrosive locations, an annual application of corrosion protection film is recommended such as BEGA part #95420.

Replacement Parts

See label inside of fixture for LED replacement part number.

Consult factory for all other replacement components.

Product Safety Warnings:

THIS PRODUCT MUST BE INSTALLED IN ACCORDANCE WITH THE APPLICABLE INSTALLATION CODE BY A PERSON FAMILIAR WITH THE CONSTRUCTION AND OPERATION OF THE PRODUCT AND THE HAZARDS INVOLVED.
SUITABLE FOR WET LOCATIONS.
MIN 60°C SUPPLY CONDUCTORS.
SUITABLE FOR GROUND-MOUNTED RECESSED ONLY.
SUITABLE FOR USE IN POURED CONCRETE.

CE PRODUIT DOIT ÊTRE INSTALLÉ SELON LE CODE D'INSTALLATION PERTINENT, PAR UNE PERSONNE QUI CONNAÎT BIEN LE PRODUIT ET SON FONCTIONNEMENT AINSI QUE LES RISQUES INHÉRENTS.
CONVIENT AUX EMPLACEMENTS MOUILLÉS.
LES FILS D'ALIMENTATION 60°C MIN.
PEUT ÊTRE ENCASTRÉ DANS LE SOL.
PEUT ÊTRE UTILISÉ DANS LE BÉTON COULÉ