

Tools Required:

4mm hex key
8mm hex key
Adjustable wrench

Protection Class: IP 65

Weight: 57.0 lbs.



Dimensions

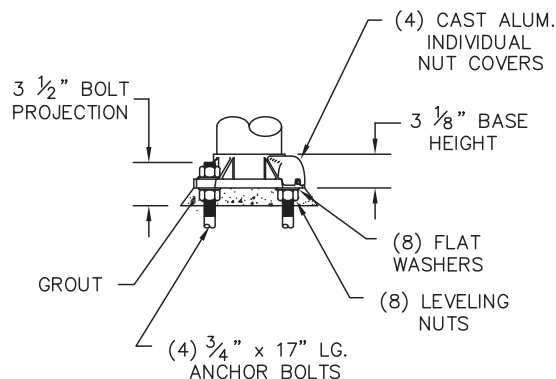
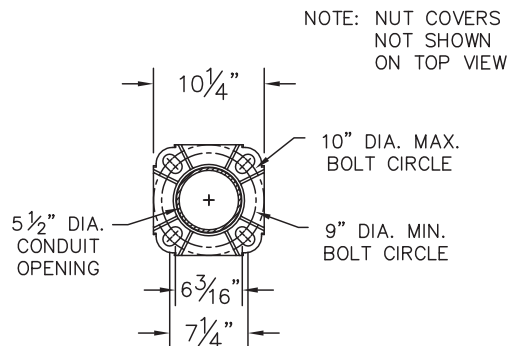
A: 5-1/2 "
B: 55 "
C: 157 "

Notice to Installer for 84 991:

- For pole top applications only. **6" O.D. straight, round, aluminum pole with 4 bolt fixed base is provided by BEGA.**
- 52" of free space is required above the luminaire for relamping and changing out the diffuser.
- Design calculations require consideration of the field conditions such as (but not limited to) wind zone, height and appendages. Consideration must be given by the designer and/or specifier to assure adequacy of design for the application.

84 991 - Installation:

- Install anchorage and conduit as shown in the figure. Complete anchorage assembly can be inserted into concrete after concrete pour and leveling. **IMPORTANT:** concrete must be vibrated or tamped to ensure concrete fully surrounds the female couplings.
 - Level and grout pole base.
 - Use caution when settling anchor bolts. Bolts must be vertical and centered on dimensions shown.
 - Route luminaire wiring conduit to the pole base.
 - Place luminaire on top of the pole. Tighten (4) 4mm set screws to secure luminaire on pole.
 - Make supply wiring and luminaire wiring connections inside pole base:
MAIN VOLTAGE SUPPLY WIRE TO BLACK LUMINAIRE WIRE
NEUTRAL (COMMON) SUPPLY WIRE TO WHITE LUMINAIRE WIRE
GREEN GROUND WIRE TO GREEN LUMINAIRE WIRE
- Dimming (if applicable):
DIMMING CONTROL WIRE (+) TO POSITIVE DRIVER DIM CONTROL WIRE
DIMMING CONTROL WIRE (-) TO NEGATIVE DRIVER DIM CONTROL WIRE



BASE DETAIL

ANCHOR BOLTS & MTG. TEMPLATE
SUPPLIED WITH POLE
OR IN ADVANCE.

Relamping/Maintenance

No relamping required.

Accessories

Please refer to the appropriate accessory installation sheet for further instruction when applicable.

Replacement Parts

Description	Part No
LED (x12) (3000K)	LED-0701/830
LED (x12) (4000K)	LED-0701/840
Lens Gasket (lower)	830678
Lens Gasket (upper)	831073
Lens	150329
Driver (x4) (120V-277V)	76070

Lamp: 46.8W LED