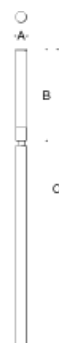


Tools Required:

4mm hex key
10mm hex key
Adjustable wrench

Protection Class: IP 65

Weight: 163.0 lbs.



Dimensions

A: 9 "
B: 78-3/4 "
C: 256 "

Notice to Installer for 84 993:

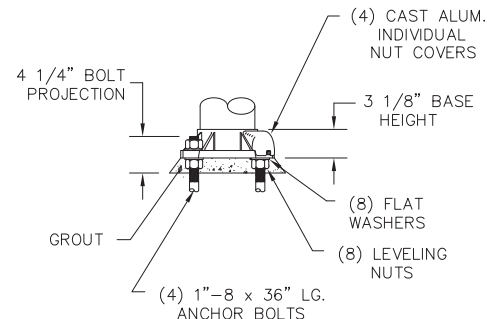
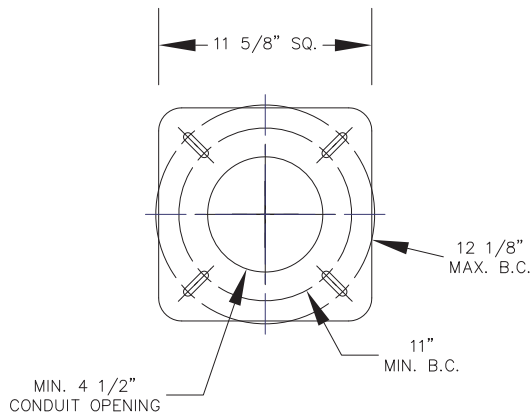
- For pole top applications only. **6" O.D. straight, round, aluminum pole with 4 bolt fixed base is provided by BEGA.**
- 60" of free space is required above the luminaire for relamping and changing out the diffuser.
- Design calculations require consideration of the field conditions such as (but not limited to) wind zone, height and appendages. Consideration must be given by the designer and/or specifier to assure adequacy of design for the application.

84 993 - Installation:

- Install anchorage and conduit as shown in the figure. Complete anchorage assembly can be inserted into concrete after concrete pour and leveling. **IMPORTANT:** concrete must be vibrated or tamped to ensure concrete fully surrounds the female couplings.
- Level and grout pole base.
- Use caution when settling anchor bolts. Bolts must be vertical and centered on dimensions shown.
- Route luminaire wiring conduit to the pole base.
- Place luminaire on top of the pole. Tighten (4) 4mm set screws to secure luminaire on pole.
- Make supply wiring and luminaire wiring connections inside pole base:
MAIN VOLTAGE SUPPLY WIRE TO BLACK LUMINAIRE WIRE
NEUTRAL (COMMON) SUPPLY WIRE TO WHITE LUMINAIRE WIRE
GREEN GROUND WIRE TO GREEN LUMINAIRE WIRE

Dimming (if applicable):

DIMMING CONTROL WIRE (+) TO POSITIVE DRIVER DIM CONTROL WIRE
DIMMING CONTROL WIRE (-) TO NEGATIVE DRIVER DIM CONTROL WIRE



BASE DETAIL

ANCHOR BOLTS & MTG. TEMPLATE
SUPPLIED WITH POLE
OR IN ADVANCE.

Relamping/Maintenance

No relamping required.

Accessories

Please refer to the appropriate
accessory installation sheet for
further instruction when applicable.

Replacement Parts

| Description | Part No |
|---------------------|--------------|
| LED (x12) (3000K) | LED-0694/930 |
| LED (x12) (4000K) | LED-0694/940 |
| Lens Gasket (lower) | 830970.1 |
| Lens Gasket (upper) | 830971 |
| Lens | 150318.6 |
| Driver (120V-277V) | 76096-01 |

Lamp: 69.6W LED