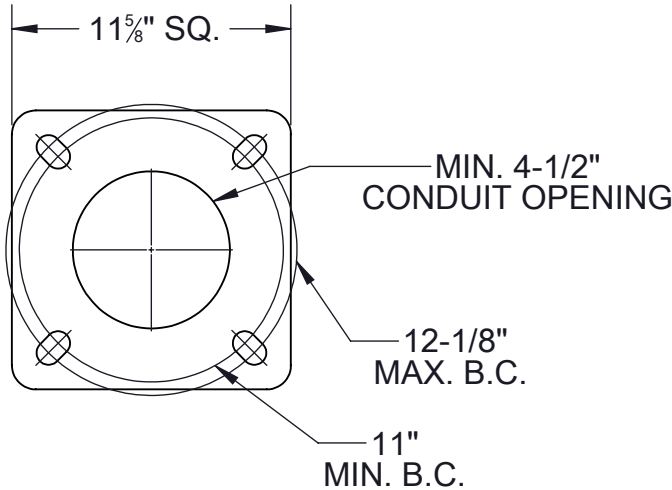
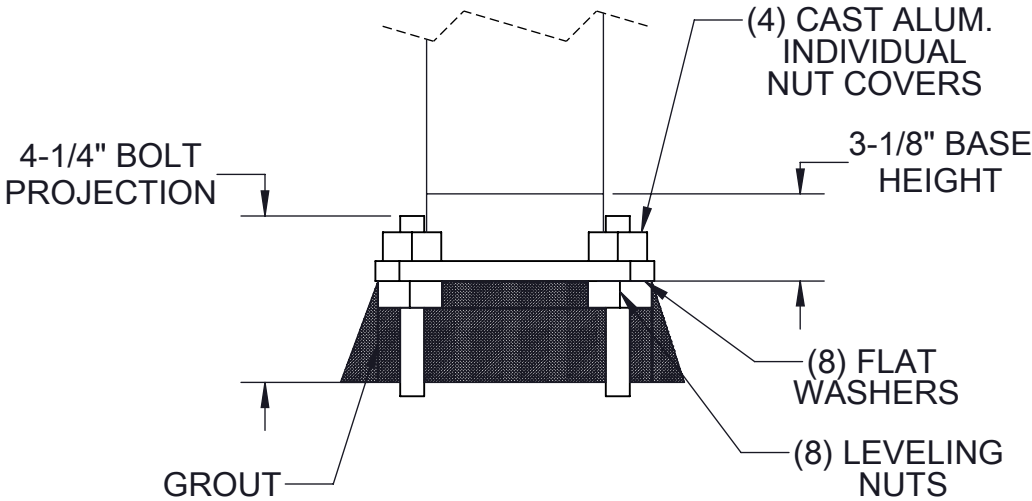


REV	CHANGED BY	DESCRIPTION	DATE



BASE DETAIL

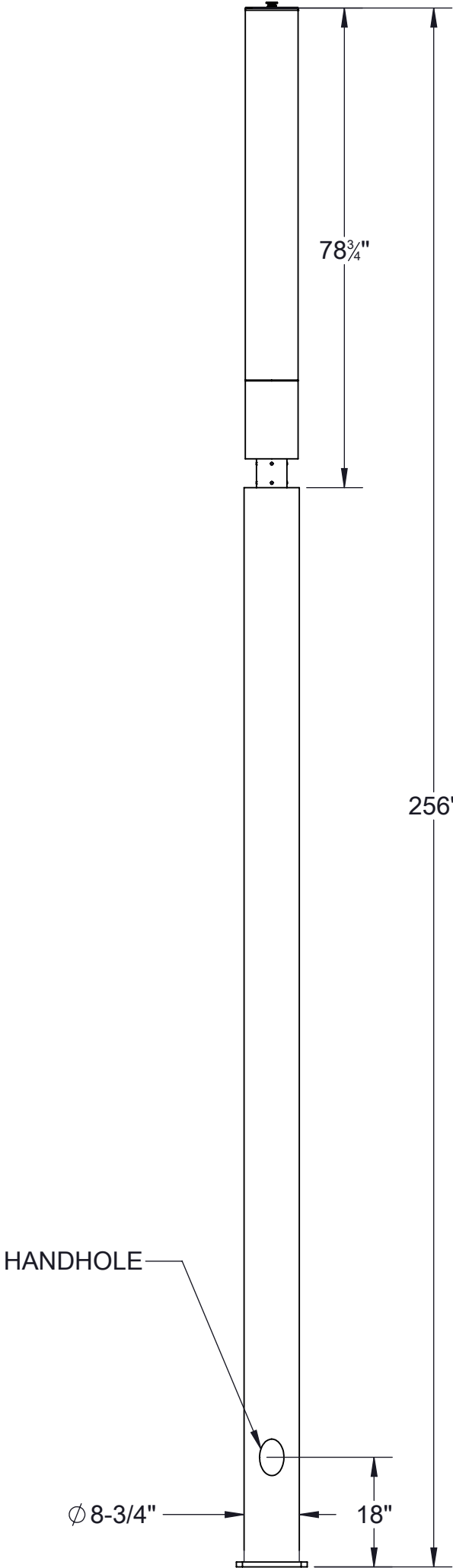
STANDARD 1 X 36.00 X 8.00  
ANCHOR BOLTS AND TEMPLATE  
SUPPLIED WITH POLE OR IN ADVANCE



ANCHOR DETAIL

NOTE: ADEQUATE DRAINAGE MUST BE PROVIDED IN FOUNDATION OR GROUT. DO NOT SEAL THE BASE OF THE POLE.

CAUTION: RAISING OR LOWERING OF THE POLE REQUIRES ADEQUATE PREPERATION. DO NOT UNDERESTIMATE THE FORCE REQUIRED TO RAISE OR LOWER POLES WITH HEAVY LUMINAIRES AT THE TOP.



NOTES:  
1. LUMINAIRE #84993 - SEE SPECIFICATIONS

BEGA				
1000 BEGA Way, Carpinteria, California 93013			P (805) 684-0533 - www.bega-us.com	
APPROVED: _____		DATE: _____		DESCRIPTION:
TYPE: _____		BUILDING ELEMENT: UNSHIELDED		
PROPRIETARY AND CONFIDENTIAL		SIZE	PART NO.	REV
THE INFORMATION CONTAINED IN THIS DRAWING IS THE SOLE PROPERTY OF BEGA NORTH AMERICA, INC.		B	84993	-
ANY REPRODUCTION IN PART OR AS A WHOLE WITHOUT THE WRITTEN PERMISSION OF BEGA NORTH AMERICA, INC. IS PROHIBITED.		NOT TO SCALE	1/3/2024	SHEET 1 OF 1