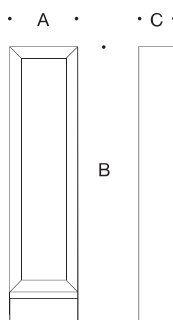


**Tools Required:**

- Adjustable wrench
- 4mm hex head screwdriver
- 5mm hex head screwdriver
- 3mm hex head screwdriver

**Overview:**

LED Watts: 17.9W  
 System Watts: 30W  
 Controllability: 0-10V dimmable  
 Weight: 28.7 lbs.  
 Protection Class: IP65



**Dimensions**

A: 10-5/8  
 B: 43-3/8  
 C: 5-1/2



**Notice to Installer:**

1. See page 2 for specific product safety warnings.
2. Fixture may be damaged if connected to conduit systems that contain water. Article 300-5G of the National Electric Code requires that "Conduits or raceways through which moisture may contact energized live parts shall be sealed or plugged at either or both ends."
3. 79 817 Anchorage Kit (included) must be installed in concrete pad/foundation that is minimum 12" in depth.
4. It is recommended that when installing in planting areas the base of the bollard be slightly elevated to avoid prolonged submerging during heavy rains.
5. Wet location listing does not imply suitability for exposure to standing water for long periods of time.

**Installation: 79 817 Anchorage kit**

1. Provide means to bring supply wiring to the bollard in accordance with local code. See Figure 1 for the size of the conduit entry opening.
  2. Assemble the anchorage kit. Unscrew the (3) hex base plate bolts from the female couplers and remove each bolt and washer. Align each anchor bolt with the hole in the template. Attach each anchor bolt to the template by replacing the washer and base plate bolt and tightening. Do not remove nuts and washers from bottom of anchor bolt; this provides the pullout force. See Figure 2.
  3. Install anchorage kit using either method:
    - Attach template to forming or cross bracing using the (2) nail holes provided in the template. Level template properly. Pour concrete.
    - Insert anchorage assembly into poured concrete. Concrete must be vibrated to ensure proper anchorage setting. Level template properly.
- NOTE: Allow adequate time for concrete to cure properly.
4. Remove (3) hex base plate bolts and washers once anchorage is set.
  5. Remove template. Smooth concrete pad as required.

**70895 Direct Burial Anchor Kit (optional) Installation:**

1. Provide means to bring supply wiring to the conduit entry location per with local code.
2. Prepare soil for anchorage or cast the post in concrete.
3. Make sure anchorage is installed firmly into the ground and mounted level to the surface.  
 NOTE: ENSURE THAT THE FLANGE PLATE IS ENTIRELY LEVEL AND FLUSH WITH THE TOP EDGE OF THE SURFACE. See Figure 2.
4. Remove (3) mounting bolts and washers from the anchorage unit.
5. Align mounting base of the bollard tube, place onto top of anchorage post.
6. Secure by replacing (3) bolts through bollard base, into threaded holes of anchorage flange. Tighten bolts firmly.
7. Skip to step 6 on 88062 luminaire installation (below)

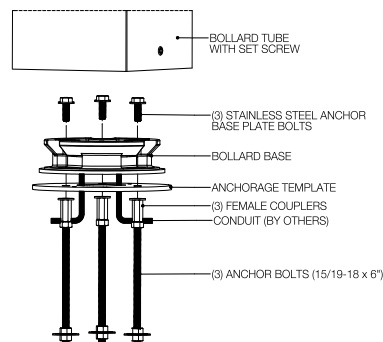
**Luminaire Installation:**

1. Remove (3) hex bolts and washers, once anchorage is set.
2. Leave template in place to provide a smooth, flat surface to mount the base.
3. Loosen the (4) 4mm hex head screws on the sides of the bollard to remove the internal mounting base. Loosen (1) 5mm hex head screw within the base to remove the bollard base plate. See Figure 3.
4. Align base plate holes with anchorage holes.
5. Bolt the base plate to the anchorage kit using the (3) hex bolts and washers.
6. Make supply wiring connections to wire leads from driver inside the fixture  
 MAIN VOLTAGE SUPPLY WIRE TO BLACK LUMINAIRE WIRE;  
 NEUTRAL (COMMON) SUPPLY WIRE TO WHITE LUMINAIRE WIRE;  
 GREEN GROUND WIRE TO GREEN LUMINAIRE WIRE.  
 Dimming (if applicable):  
 DIMMING CONTROL WIRE (+) TO POSITIVE DRIVER CONTROL WIRE  
 DIMMING CONTROL WIRE (-) TO NEGATIVE DRIVER CONTROL WIRE
7. Place the bollard internal mounting base over the base plate and secure the bollard by tightening the 5mm set screw at the base.
8. Place bollard over internal mounting base and lock into place by tightening (4) 4mm hex head screws.

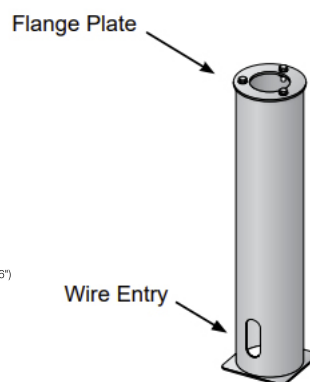
**Optic Adjustment:**

1. See Figure 4
2. Loosen (4) 4mm hex head screws on the underside of the top of luminaire and remove top casting with LED's attached.
3. Unscrew (2) 3mm hex head screws on either side of LED.
4. Adjust to 0, 15, or 30 degrees and screw in 3mm hex head screws.
5. Replace top casting assembly and tighten (4) hex head screws on underside of top casting.

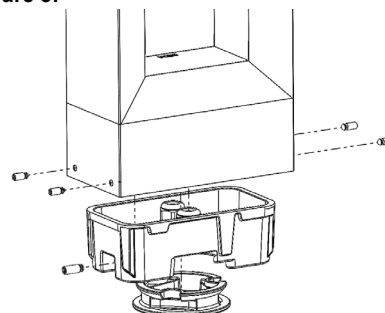
**Figure 1:**



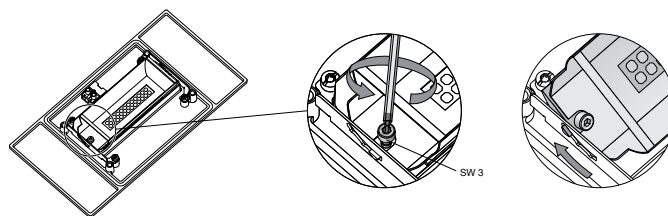
**Figure 2:**



**Figure 3:**



**Figure 4:**



**Accessories**

Please refer to the appropriate accessory installation sheet for further instruction when applicable.

**Maintenance:**

Clean regularly with solvent-free cleaner removing dirt and debris. Do not use high pressure cleaners.

**Replacement Parts**

See label inside of fixture for LED replacement part number.

Consult factory for all other replacement components.

**Product Safety Warnings:**

**THIS PRODUCT MUST BE INSTALLED IN ACCORDANCE WITH THE APPLICABLE INSTALLATION CODE BY A PERSON FAMILIAR WITH THE CONSTRUCTION AND OPERATION OF THE PRODUCT AND THE HAZARDS INVOLVED.**  
**SUITABLE FOR WET LOCATIONS.**  
**SUITABLE FOR MOUNTING WITHIN 1.2 m (4ft) OF THE GROUND**  
**MIN 60°C SUPPLY CONDUCTORS.**

**CE PRODUIT DOIT ÊTRE INSTALLÉ SELON LE CODE D'INSTALLATION PERTINENT, PAR UNE PERSONNE QUI CONNAÎT BIEN LE PRODUIT ET SON FONCTIONNEMENT AINSI QUE LES RISQUES INHÉRENTS.**  
**CONVIENT AUX EMPLACEMENTS MOUILLÉS.**  
**PEUT ÊTRE INSTALLÉ À MOINS DE 1,2 m (4 pi) DU SOL**  
**LES FILS D'ALIMENTATION 60°C MIN.**