

Tools Required:

- 2.5mm hex key
- 4mm hex key
- 5mm hex key
- 1/4" masonry/concrete drill bit

Protection Class: IP65

Weight: 13.2 lbs



Dimensions

- A:** 6-1/4"
- B:** 31-1/2"
- C:** 4-3/8"

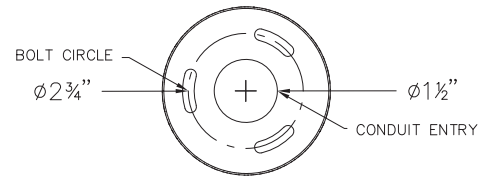


Notice to Installer for 88 961:

1. Fixture may be damaged if connected to conduit systems that contain water. Article 300-5G of the National Electric Code requires that "Conduits or raceways through which moisture may contact energized live parts shall be sealed or plugged at either or both ends."
2. It is recommended that when installing in planting areas the base of the bollard be slightly elevated to avoid prolonged submerging during heavy rains.
3. Wet location listing does not imply suitability for exposure to standing water for long periods of time.
4. 79 824 anchorage kit is installed AFTER concrete pouring. There is no anchorage installation required during concrete pouring.
5. LEDs are high-quality electronic components! Please avoid touching the light output opening of the LED directly during installation.

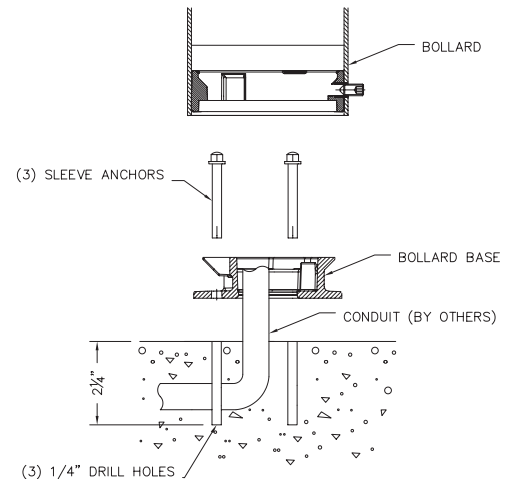
79 824 anchorage installation:

1. Provide means to bring supply wiring to the pillar in accordance with local code and pour concrete for finished grade. The pillar mounting plate has a 1 1/2" conduit hole for conduit entry.
2. Loosen set screw at pillar base and remove mounting plate.
3. After establishing finished grade, mark the location of the (3) anchorage drill holes using the mounting plate of the fixture as a template.
4. Drill (3) 1/4" holes in concrete at the marked locations.
5. Align mounting plate holes with drill holes.
6. Drive the sleeve anchors through the mounting plate and into the drilled holes until seated flush.



88 961 - installation:

1. Remove (3) hex bolts and washers, once anchorage is set.
2. Remove template, making sure that there is a smooth, flat surface to mount the base.
3. Loosen the 5mm set screw at the base of the fixture and remove baseplate from bollard.
4. Align base plate holes with anchorage holes.
5. Bolt the base plate to the anchorage kit using the (3) hex bolts and washers.
6. Make supply wiring connections to wire leads from driver inside the fixture
 MAIN VOLTAGE SUPPLY WIRE TO BLACK DRIVER WIRE;
 NEUTRAL (COMMON) SUPPLY WIRE TO WHITE DRIVER WIRE;
 GREEN GROUND WIRE TO GREEN DRIVER WIRE.
- Dimming (if applicable):
 DIMMING CONTROL WIRE (+) TO POSITIVE DRIVER DIM CONTROL WIRE
 DIMMING CONTROL WIRE (-) TO NEGATIVE DRIVER DIM CONTROL WIRE
7. Place the bollard over the base plate so that the (3) notches in the base plate align with the top. Lock fixture into place by turning bollard 1/4 turn.
8. Secure the bollard by tightening the 5mm set screw at the base.



Relamping/Maintenance

No relamping necessary.

Accessories

Please refer to the appropriate accessory installation sheet for further instruction when applicable.

Anchor Kit 79 824

Replacement Parts

Description	Part No
Face Plate	FP8961
Driver (120-277V)	76023
LED Module (3000K)	(x2) LED-0141/830
LED Module (4000K)	(x2) LED-0141/840

Lamp: 4.0W LED

Product Safety Warnings:

THIS PRODUCT MUST BE INSTALLED IN ACCORDANCE WITH THE APPLICABLE INSTALLATION CODE BY A PERSON FAMILIAR WITH THE CONSTRUCTION AND OPERATION OF THE PRODUCT AND THE HAZARDS INVOLVED. SUITABLE FOR WET LOCATIONS.

MIN 90°C SUPPLY CONDUCTORS.

CE PRODUIT DOIT ÊTRE INSTALLÉ SELON LE CODE D'INSTALLATION PERTINENT, PAR UNE PERSONNE QUI CONNAÎT BIEN LE PRODUIT ET SON FONCTIONNEMENT AINSI QUE LES RISQUES INHÉRENTS. CONVIENT AUX EMPLACEMENTS MOUILLES.

LES FILS D'ALIMENTATION 90°C MIN.
