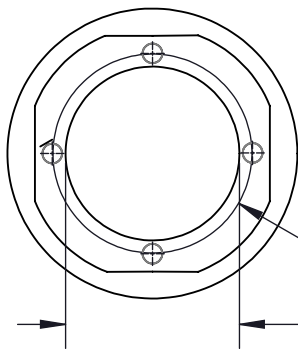
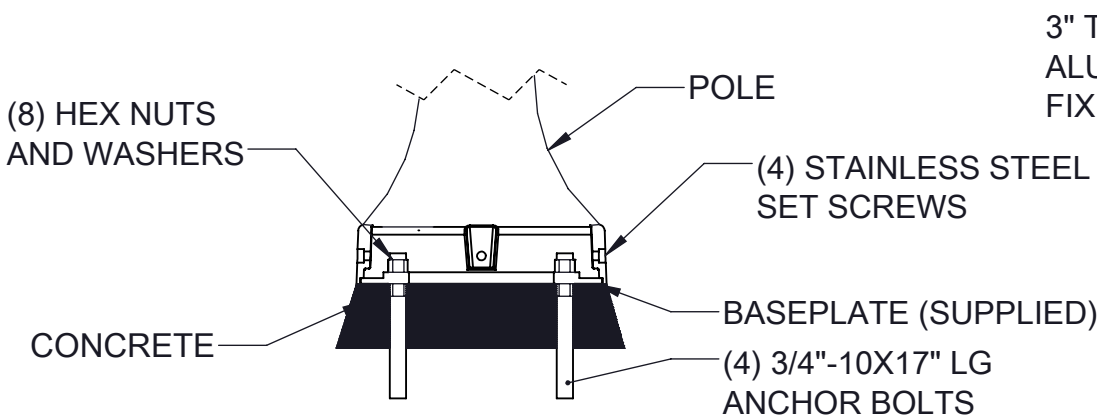


REV	CHANGED BY	DESCRIPTION	DATE



BASE DETAIL
STANDARD .75 X 17.00 X 3.00
ANCHOR BOLTS AND TEMPLATE
SUPPLIED WITH POLE OR IN ADVANCE
ANCHOR PART NUMBER: 898A



ANCHOR DETAIL

NOTE: ADEQUATE DRAINAGE
MUST BE PROVIDED IN
FOUNDATION OR GROUT. DO
NOT SEAL THE BASE OF THE
POLE.

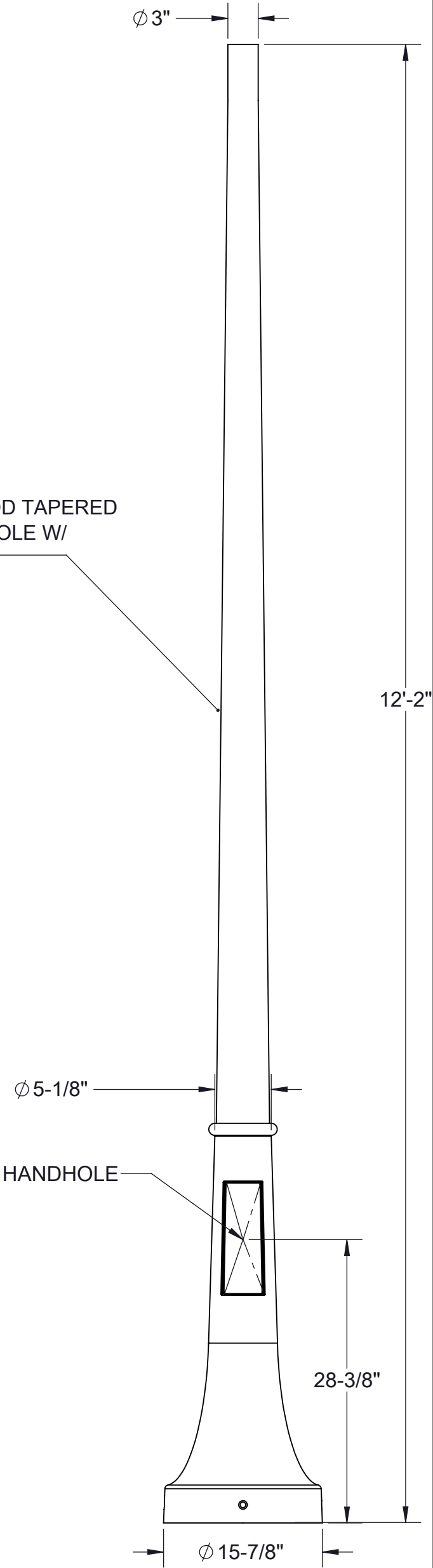
CAUTION: RAISING OR LOWERING OF THE POLE REQUIRES ADEQUATE PREPERATION. DO NOT UNDERESTIMATE THE FORCE REQUIRED TO RAISE OR LOWER POLES WITH HEAVY LUMINAIRES AT THE TOP.

POLE WIND LOAD RATING, ALLOWS FOR 1.3 GUST FACTOR*								
MPH	85	90	100	110	120	130	140	150
EPA**	7.5	6.3	5.6	5.0	4.5	3.9	3.4	2.8

*PER AASHTO 2013 WIND MAP
**DATA ABOVE ASSUMES GRADE LEVEL INSTALLATION
AND A MAXIMUM LUMINAIRE WEIGHT OF 60 LBS.

DISCLAIMER:
BEGA NORTH AMERICA WARRANTS THE SPECIFIC ANCHOR BOLTS & POLE COMBINATION ACCORDING TO THE PRODUCT NUMBER(S) AND DESCRIPTION(S). STRUCTURAL CHANGES TO THE POLE REQUESTED BY THE CUSTOMER INCLUDING CHANGES TO THE POLE LENGTH, MAY AFFECT THE COMPATIBILITY OF THE ANCHOR BOLTS AND CORRESPONDING POLES. BEGA NORTH AMERICA IS NOT RESPONSIBLE FOR THE INCOMPATIBILITY OF THE ANCHOR BOLTS AND POLES RESULTING FROM SUCH STRUCTURAL CHANGES WITHOUT REVIEW BY THE BEGA NORTH AMERICA ENGINEERING DEPARTMENT. THIS INCLUDES BUT IS NOT LIMITED TO; ANY LABOR CHARGES, CHARGES FOR REPLACEMENT MATERIALS, AND SHIPPING. FOR SAFETY REASONS, DO NOT MOUNT MORE THAN MORE THAN 60 LBS. POLE CAPACITIES ARE BASED UPON THE PROVISIONS OF AASHTO 2013 (LTS-6). ADEQUATE DRAINAGE MUST BE PROVIDED IN CONCRETE FOUNDATION OR GROUT. DO NOT SEAL THE BASE OF THE POLE. DUE TO STRUCTURAL REASONS, DO NOT INSTALL POLE WITHOUT FIXTURE OR OTHER APPROPRIATE WEIGHT ON THE TOP

3" TO 5-1/8" OD TAPERED
ALUMINUM POLE W/
FIXED BASE



BEGA

1000 BEGA Way, Carpinteria, California 93013

P (805) 684-0533 - www.bega-us.com

APPROVED: _____ DATE: _____

TYPE: _____

DESCRIPTION:

ALUMINUM POLE: FIXED BELL BASE

PROPRIETARY AND CONFIDENTIAL

THE INFORMATION CONTAINED IN THIS DRAWING IS THE SOLE PROPERTY OF BEGA NORTH AMERICA, INC.

ANY REPRODUCTION IN PART OR AS A WHOLE WITHOUT THE WRITTEN PERMISSION OF BEGA NORTH AMERICA, INC. IS PROHIBITED.

SIZE

B

PART NO.

927

REV

-

NOT TO SCALE

08/29/2023

SHEET 1 OF 1