

Tools Required:

- 3mm hex head screwdriver
- 5mm hex head screwdriver
- Phillips head screwdriver
- Adjustable wrench

Overview:

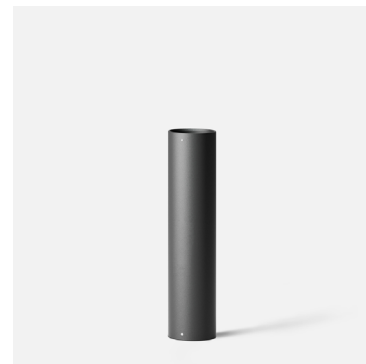
Weight: 13 lbs.
Protection Class: IP65



Dimensions

A: 7-1/2

B: 32



Notice to Installer:

1. See page 2 for specific product safety warnings.
2. Fixture may be damaged if connected to conduit systems that contain water - Article 300-5G of the National Electric Code requires that "Conduits or raceways through which moisture may contact energized live parts shall be sealed or plugged at either or both ends."
3. For proper installation, an accompanying bollard head must be selected with the bollard tube.
4. 79 818 anchorage kit (included) must be installed in concrete pad/foundation.
5. It is recommended that when installing in planting areas the bollard base be slightly elevated to avoid prolonged submerging during heavy rains.
6. Wet location listing does not imply suitability for exposure to standing water for long periods of time.

79818 Anchorage Installation:

1. Provide means to bring supply wiring to the bollard in accordance with local code. Assemble the anchorage kit. Unscrew the (3) hex base plate bolts from the female couplers and remove each bolt and washer. Align each anchor bolt with the hole in the template. Attach each anchor bolt to the template by replacing the washer and base plate bolt and tightening. Do not remove nuts and washers from bottom of anchor bolt; this provides the pullout force. See Figure 1.
2. Install anchorage kit using either method:
 - Attach template to forming or cross bracing using the (2) nail holes provided in the template. Level template properly. Pour concrete.
 - Insert anchorage assembly into poured concrete. Concrete must be vibrated to ensure proper anchorage setting. Level template properly.

NOTE: Allow adequate time for concrete to cure properly.
3. Remove (3) hex base plate bolts and washers once anchorage is set.
4. Remove template. Smooth concrete pad as required.

70 896 direct burial (optional) anchorage installation:

1. Provide means to bring supply wiring to the conduit entry location per local code (20" of supply wire above finished grade is required to make connections.) (FIGURE 2)
2. Prepare soil for anchorage or cast the post in concrete.
3. Make sure anchorage is installed firmly into the ground and mounted level to the surface. NOTE: ENSURE THAT THE FLANGE PLATE IS ENTIRELY LEVEL AND FLUSH WITH THE TOP EDGE OF THE SURFACE
4. Remove (3) mounting bolts and washers from the anchorage unit
5. Align mounting base of the bollard tube, place onto top of anchorage post.

Bollard tube installation:

1. Remove base plate from bollard by loosening the bolt(s) or set screw(s) near bollard base. Align base plate holes with anchorage holes.
2. Bolt the base plate to the anchorage kit using the (3) hex base plate bolts and washers.
3. Make supply wiring connections to wire leads from ballast inside the fixture
 - MAIN VOLTAGE SUPPLY WIRE TO BLACK BALLAST WIRE;
 - NEUTRAL (COMMON) SUPPLY WIRE TO WHITE BALLAST WIRE;
 - GREEN GROUND WIRE TO GREEN BALLAST WIRE
4. Place the bollard tube over the base plate so that the (3) notches in the base plate align with the top. Lock fixture into place by turning bollard 1/4" turn.
5. Secure the bollard by tightening the bolt(s) or set screw(s) provided.
6. Install luminaire head per installation instructions provided.

Figure 1:

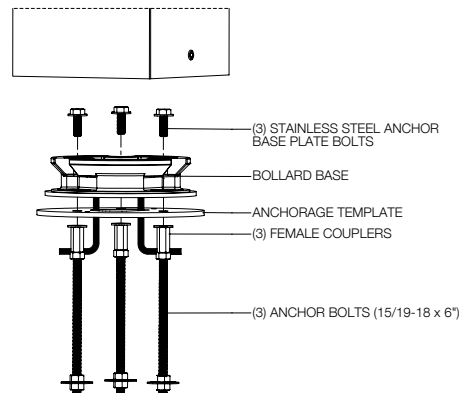
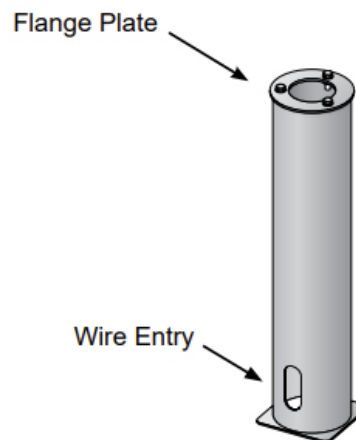


Figure 2:



Accessories

Please refer to the appropriate accessory installation sheet for further instruction when applicable.

Maintenance:

Clean regularly with solvent-free cleaner removing dirt and debris. Do not use high pressure cleaners.

Replacement Parts

Consult factory for all replacement components.

Product Safety Warnings:

**THIS PRODUCT MUST BE INSTALLED IN ACCORDANCE WITH THE APPLICABLE INSTALLATION CODE BY A PERSON FAMILIAR WITH THE CONSTRUCTION AND OPERATION OF THE PRODUCT AND THE HAZARDS INVOLVED.
SUITABLE FOR WET LOCATIONS.
MIN 60°C SUPPLY CONDUCTORS.**

**CE PRODUIT DOIT ÊTRE INSTALLÉ SELON LE CODE D'INSTALLATION PERTINENT, PAR UNE PERSONNE QUI CONNAÎT BIEN LE PRODUIT ET SON FONCTIONNEMENT AINSI QUE LES RISQUES INHÉRENTS.
CONVIENT AUX EMPLACEMENTS MOUILLÉS.
LES FILS D'ALIMENTATION 60°C MIN.**