

Tools Required:

- M5 hex head screwdriver
- M4 hex head screwdriver
- Small flat head screwdriver

Overview:

LED Watts: 45.7W
 System Watts: 49.0W
 Controllability: DMX and RDM compatible
 Weight: 12.3 lbs.
 Protection Class: IP65

Notice to Installer:

1. See page 2 for specific product safety warnings.
2. **FIXTURE MUST BE CONNECTED TO "DMX COMPATIBLE" LIGHT CONTROL SYSTEM! FIXTURE WILL NOT OPERATE OTHERWISE!**
3. Waterproof data cable should be routed to the fixture per "Recommended Practice for DMX512." Installer should be familiar with the guidelines as well.
4. NOTE: A terminator must be used at the end of the run between the data lines per "Recommended Practice for DMX512."
5. *BEGA luminaires may be damaged if connected to conduit systems containing water - Article 300-5G of National Electric Code requires that "Conduits or raceways through which moisture may contact energized live parts shall be sealed or plugged at either or both ends".*
6. In conformance with UL Standard 1598, a silicone based sealant must be used between luminaire and supporting surface.
7. Integral LED driver supplied by BEGA.
8. Floodlight mounts directly to finished surface over standard 4" octagonal wiring box (by others).
9. Wiring connections made within floodlight canopy

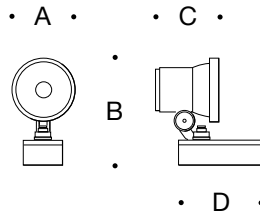
98016 Installation:

1. Use M4 hex key to loosen (4) hex screws and remove canopy cover plate.
2. Bring DMX in and DMX out wiring into the floodlight canopy through the two provided openings.
3. **Make DMX connections in floodlight canopy, per "Recommended Practice for DMX512." Figure 1**
 "DMX SHIELD" : BLACK WIRE
 "DMX -" [NEGATIVE] : BLUE WIRE
 "DMX +" [POSITIVE] : WHITE WIRE
4. Make supply wiring and cable connections inside junction box (provided by others):
 MAIN VOLTAGE SUPPLY WIRE TO BLACK LUMINAIRE WIRE;
 NEUTRAL (COMMON) SUPPLY WIRE TO WHITE LUMINAIRE WIRE
 GREEN (GROUND) WIRE TO GREEN LUMINAIRE WIRE
5. Mount floodlight canopy directly to finished surface using hardware (by others) Figure 2.
6. Replace canopy cover and tighten (4) M4 hex screws to secure.
7. Use M5 hex key and small Flathead screwdriver to adjust floodlight to desired angle. Figure 3.

Accessories

Please refer to the appropriate accessory installation sheet for further instruction when applicable.

Elliptical spread lens **70065**
 180° glare shield **70758**
 360° glare shield **70721**



Dimensions

A: 9-1/8"
 B: 13-3/4"
 C: 9"
 D: 9-1/2"



Figure 1: DMX Wiring Diagram: Bus Topology

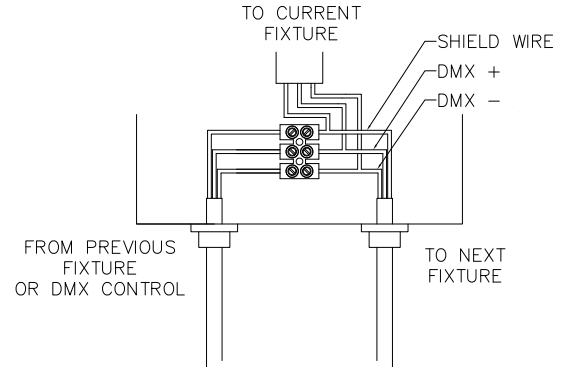


Figure 2: Mounting Detail

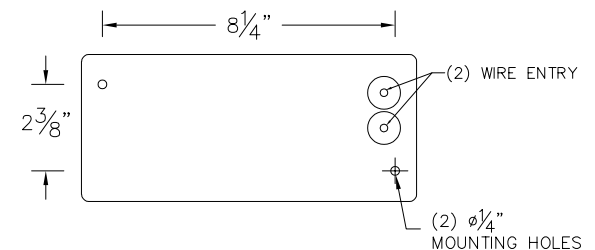
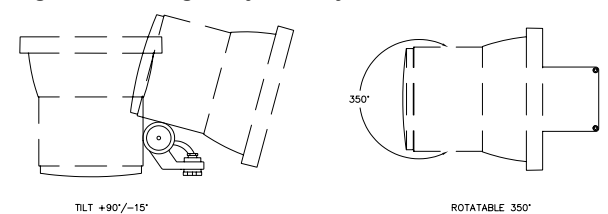


Figure 3: Floodlight Adjustability



Maintenance:

Clean regularly with solvent-free cleaner removing dirt and debris. Do not use high pressure cleaners.

Replacement Parts

See label inside of fixture for LED replacement part number.

Consult factory for all other replacement components.

Product Safety Warnings:

THIS PRODUCT MUST BE INSTALLED IN ACCORDANCE WITH THE APPLICABLE INSTALLATION CODE BY A PERSON FAMILIAR WITH THE CONSTRUCTION AND OPERATION OF THE PRODUCT AND THE HAZARDS INVOLVED. SUITABLE FOR WET LOCATIONS. MIN 90°C SUPPLY CONDUCTORS.

CE PRODUIT DOIT ÊTRE INSTALLÉ SELON LE CODE D'INSTALLATION PERTINENT, PAR UNE PERSONNE QUI CONNAÎT BIEN LE PRODUIT ET SON FONCTIONNEMENT AINSI QUE LES RISQUES INHÉRENTS. CONVIENT AUX EMPLACEMENTS MOUILLÉS.

LES FILS D'ALIMENTATION 90°C MIN.