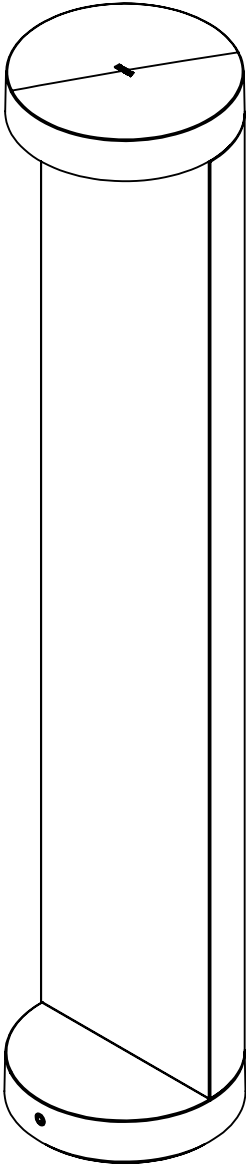


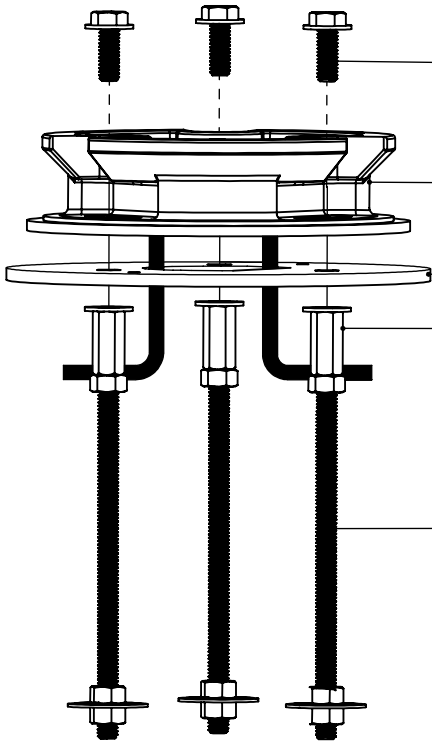
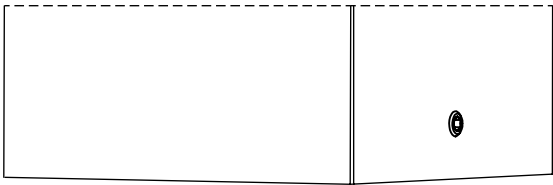
REV	CHANGED BY	DESCRIPTION	DATE



NOTES:  
1. INCLUDES 79817 - ANCHORAGE KIT

BEGA				
1000 BEGA Way, Carpinteria, California 93013			P (805) 684-0533 - www.bega-us.com	
APPROVED: _____ DATE: _____		DESCRIPTION: BOLLARD - WIDE SPREAD		
TYPE: _____				
PROPRIETARY AND CONFIDENTIAL THE INFORMATION CONTAINED IN THIS DRAWING IS THE SOLE PROPERTY OF BEGA NORTH AMERICA, INC. ANY REPRODUCTION IN PART OR AS A WHOLE WITHOUT THE WRITTEN PERMISSION OF BEGA NORTH AMERICA, INC. IS PROHIBITED.		SIZE B	PART NO. 99058	REV -
		NOT TO SCALE	6/6/2024	SHEET 1 OF 3

REV	CHANGED BY	DESCRIPTION	DATE



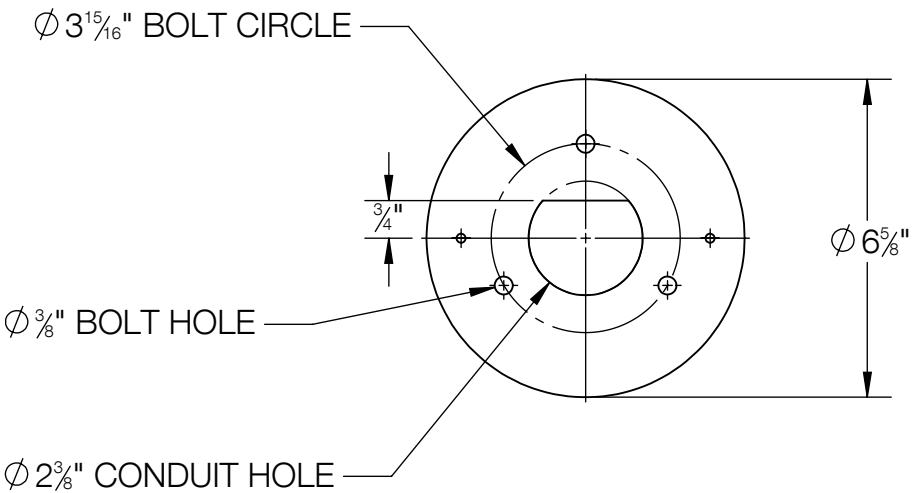
(3) STAINLESS STEEL ANCHOR  
BASE PLATE BOLTS

BOLLARD BASE

ANCHORAGE TEMPLATE

(3) FEMALE COUPLERS

(3) ANCHOR BOLTS (15/19-18 x 6")



## BEGA

1000 BEGA Way, Carpinteria, California 93013

P (805) 684-0533 - [www.bega-us.com](http://www.bega-us.com)

APPROVED: \_\_\_\_\_ DATE: \_\_\_\_\_

TYPE: \_\_\_\_\_

DESCRIPTION:

ANCHORAGE KIT

PROPRIETARY AND CONFIDENTIAL

THE INFORMATION CONTAINED IN THIS DRAWING IS THE SOLE PROPERTY  
OF BEGA NORTH AMERICA, INC.  
ANY REPRODUCTION IN PART OR AS A WHOLE WITHOUT THE WRITTEN  
PERMISSION OF BEGA NORTH AMERICA, INC. IS PROHIBITED.

SIZE

B

PART NO.

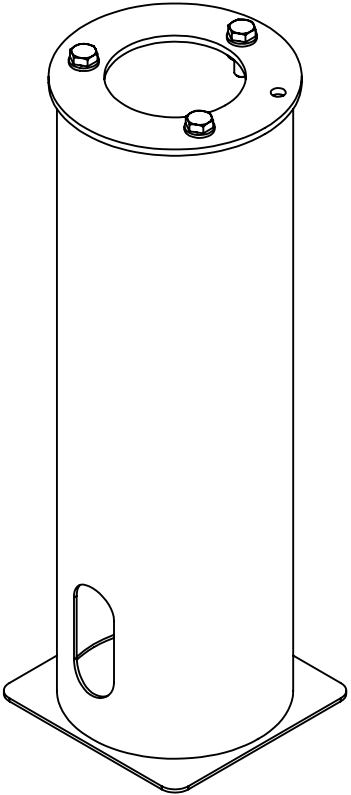
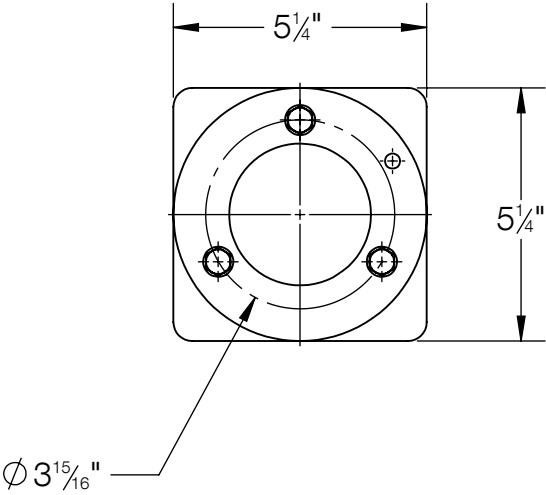
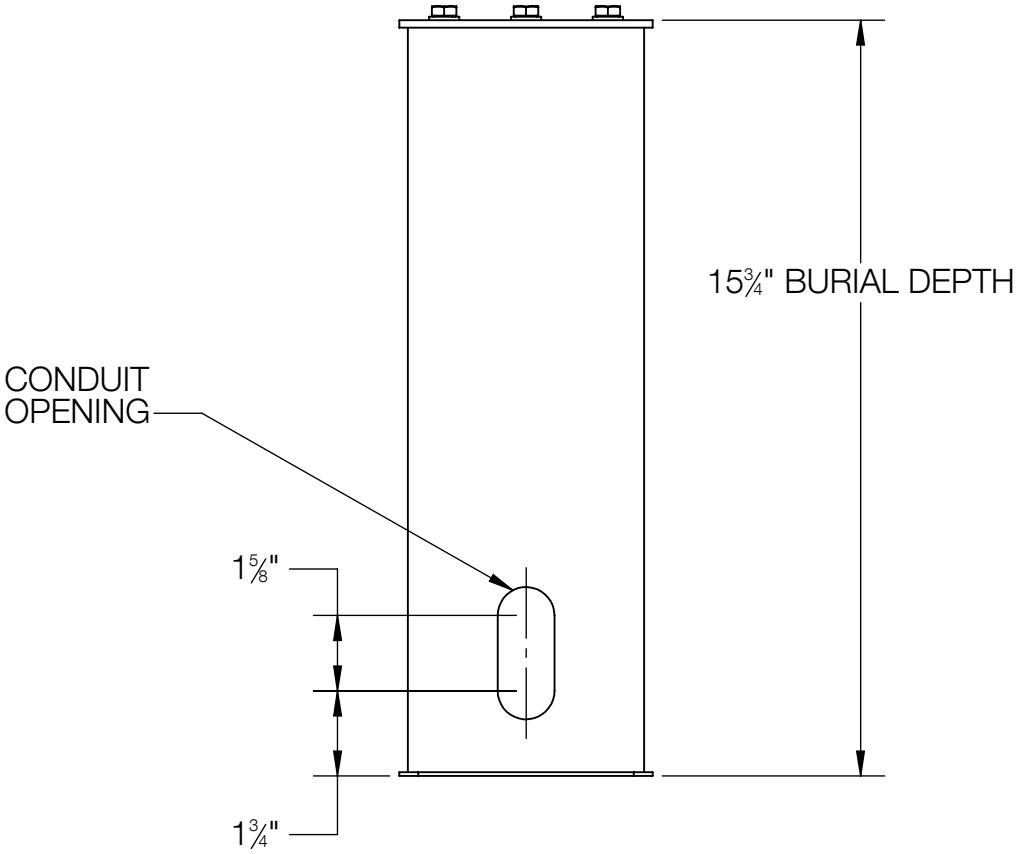
79817

REV

-

NOT TO SCALE 6/6/2024 SHEET 2 OF 3

REV	CHANGED BY	DESCRIPTION	DATE



NOTE:  
1. 70895 OPTIONAL DIRECT BURIAL ANCHOR KIT

BEGA				
1000 BEGA Way, Carpinteria, California 93013			P (805) 684-0533 - www.bega-us.com	
APPROVED: _____ DATE: _____		DESCRIPTION: DIRECT BURIAL ANCHOR KIT		
TYPE: _____				
PROPRIETARY AND CONFIDENTIAL THE INFORMATION CONTAINED IN THIS DRAWING IS THE SOLE PROPERTY OF BEGA NORTH AMERICA, INC. ANY REPRODUCTION IN PART OR AS A WHOLE WITHOUT THE WRITTEN PERMISSION OF BEGA NORTH AMERICA, INC. IS PROHIBITED.		SIZE	PART NO.	REV
		B	70895	-
		NOT TO SCALE	6/6/2024	SHEET 3 OF 3