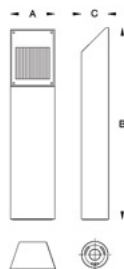


Tools Required:

3mm hex key
4mm hex key
6mm hex key
1/4" masonry/concrete drill bit
Drill

Protection Class: IP65

Weight: 8.8 lbs.



Dimensions

A: 6-3/8"
B: 31-1/2"
C: 4-3/8"

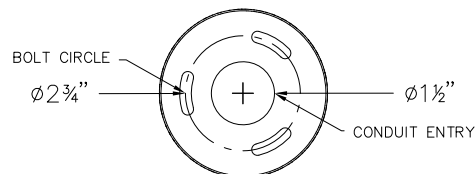


Notice to Installer for 99 552:

- See page 2 for specific product safety warnings.
- BEGA fixtures may be damaged if connected to conduit systems that contain water – Article 300-5G of the National Electric Code requires that "Conduits or raceways through which moisture may contact energized live parts shall be sealed or plugged at either or both ends".
- It is recommended that when installed in planting areas, the bollard base be slightly elevated to avoid prolonged submerging during heavy rains and irrigation.
- 79 824 anchorage kit is installed AFTER concrete pouring. There is no anchorage installation required during concrete pouring.
- This fixture is listed for wet locations. Wet location does not imply suitability for installation in applications where fixture is exposed to standing or running water for long periods of time.
- Anchorage used in finished concrete applications only.

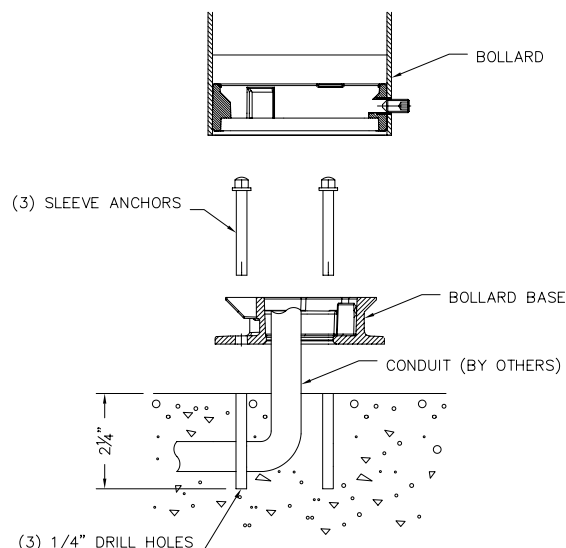
79 824 anchorage installation:

- Provide means to bring supply wiring to the bollard in accordance with local code and pour concrete for finished grade. The bollard base has a 1-1/2" conduit hole for conduit entry.
- Loosen the M8 set screw at the base of the fixture. Turn the base plate and remove from bollard.
- After establishing finished grade, mark the location of the (3) anchorage drill holes using the base plate of the fixture as a template.
- Drill (3) 1/4" holes in concrete at the marked locations.
- Align base plate holes with drill holes.
- Then, drive the sleeve anchors through the base plate and on into the drill holes until seated flush.
- Bolt the base plate to the mounting surface by tightening the (3) acorn nuts.



99 552 - installation:

- Make supply wiring connections to wire leads inside the fixture.
MAIN VOLTAGE SUPPLY WIRE TO BLACK FIXTURE WIRE
NEUTRAL (COMMON) SUPPLY WIRE TO WHITE FIXTURE WIRE
GREEN GROUND WIRE TO GREEN FIXTURE WIRE
Dimming (if applicable):
DIMMING CONTROL WIRE (+) TO POSITIVE DRIVER DIM CONTROL WIRE
DIMMING CONTROL WIRE (-) TO NEGATIVE DRIVER DIM CONTROL WIRE
- Place the bollard over the base plate so that the notches in the base plate align with the slots in the top. Lock the fixture into place by turning the bollard 1/4" turn.
- Secure the bollard by tightening the 4mm set screw at the base.



Relamping/Maintenance

Loosen (4) faceplate screws and disassemble faceplate. Clean dirt and deposits from the luminaire and glass using only solvent-free cleaners. Replace gasket if damaged. Reassemble faceplate.

Accessories

Please refer to the appropriate accessory installation sheet for further instruction when applicable.

Anchor Kit 79 824

Replacement Parts

Description	Part No
LED Driver (120-277V)	76024
LED Module (3000K)	LED-0219/830
LED Module (4000K)	LED-0219/840

Lamp: 5.8W LED

In the interest of product improvement, BEGA reserves the right to make technical changes without notice.

Product Safety Warnings

THIS PRODUCT MUST BE INSTALLED IN ACCORDANCE WITH THE APPLICABLE INSTALLATION CODE BY A PERSON FAMILIAR WITH THE CONSTRUCTION AND OPERATION OF THE PRODUCT AND THE HAZARDS INVOLVED. SUITABLE FOR WET LOCATIONS.

MIN 60°C SUPPLY CONDUCTORS.

CE PRODUIT DOIT ÊTRE INSTALLÉ SELON LE CODE D'INSTALLATION PERTINENT, PAR UNE PERSONNE QUI CONNAÎT BIEN LE PRODUIT ET SON FONCTIONNEMENT AINSI QUE LES RISQUES INHÉRENTS. CONVIENT AUX EMPLACEMENTS MOUILLÉS.

LES FILS D'ALIMENTATION 60°C MIN.