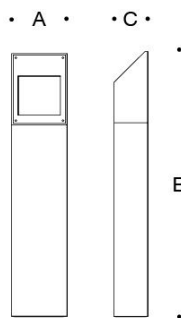


Tools Required:

- 6mm hex key
- 1/2" nut driver

Overview:

LED Watts: 17.6W
 System Watts: 30W
 Controllability: 0-10V, dimmable
 Weight: 18.7 lbs.
 Protection Class: IP65



Dimensions

A: 9-7/8"
 B: 43-3/8"
 C: 5-1/2"



Notice to Installer:

1. Fixture may be damaged if connected to conduit systems that contain water- Article 300-5G of the National Electric Code requires that "Conduits or race ways through which moisture may contact energized live parts shall be sealed or plugged at either or both ends."
2. 79817 anchorage kit (included) must be installed in concrete pad/foundation.
3. It is recommended that when installing in planting areas the bollard base be slightly elevated to avoid prolonged submersion during heavy rains.
4. Wet location listing does not imply suitability for exposure to standing water for long periods of time.
5. LED driver and LED module included in luminaire housing.

79817 anchorage installation for 99560:

1. Provide means to bring supply wiring to the bollard in accordance with local code. See Figure 1 for size the of the conduit entry opening.
 2. Assemble the anchorage kit. Unscrew the (3) base plates bolts from the female couplers and remove each bolt and washer. Align each anchor bolt with the hole in the template. Attach each anchor bolt to the template by replacing the washer and base plate bolt and tightening. Do not remove nuts and washers from bottom of anchor bolt; this provides the pullout force. See Figure 2.
 3. Install anchorage kit using either method:
 - Attach template to forming or cross bracing using the (2) nail holes provided in the template. Level template properly. Pour concrete.
 - Insert anchorage assembly into poured concrete. Concrete must be vibrated to ensure proper anchorage setting. Level template properly.
- NOTE: Allow adequate time for concrete to cure properly.
4. Remove (3) hex base plate bolts and washers once anchorage is set.
 5. Remove template. Smooth concrete pad as required.

Figure 1:

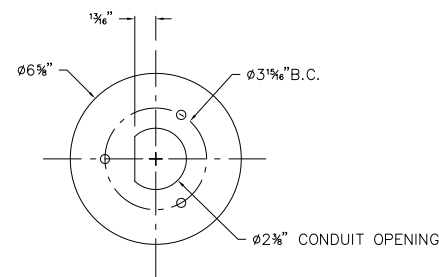
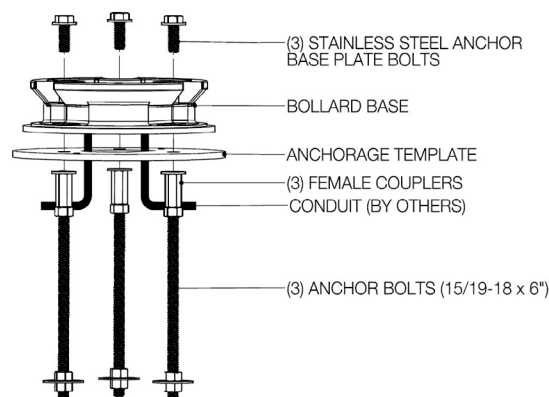


Figure 2:



Installation: 99560 luminaire:

1. Make supply wiring and luminaire wiring connections in the luminaire base
2. Align base plate holes with anchorage holes.
3. Bolt the base plate to the anchorage kit using the (3) hex base plate bolts and washers.
4. Make supply wiring connections to wire leads from ballast inside the fixture
 - MAIN VOLTAGE SUPPLY WIRE TO BLACK LUMINAIRE WIRE;
 - NEUTRAL (COMMON) SUPPLY WIRE TO WHITE LUMINAIRE WIRE;
 - GREEN GROUND WIRE TO GREEN LUMINAIRE WIRE
 - Dimming (if applicable):
 DIMMING CONTROL WIRE (+) TO POSITIVE DRIVER DIM CONTROL WIRE
 DIMMING CONTROL WIRE (-) TO NEGATIVE DRIVER DIM CONTROL WIRE
5. Place the bollard over the base plate so that the (3) notches in the base plate align with the top. Lock the fixture into place by turning the bollard 1/4 turn. Tighten 4mm set screw.

Accessories

Please refer to the appropriate accessory installation sheet for further instruction when applicable.

Maintenance:

Clean regularly with solvent-free cleaner removing dirt and debris. Do not use high pressure cleaners.

Replacement Parts

See label inside of fixture for LED replacement part number.

Consult factory for all other replacement components.

Product Safety Warnings:

**THIS PRODUCT MUST BE INSTALLED IN ACCORDANCE WITH THE APPLICABLE INSTALLATION CODE BY A PERSON FAMILIAR WITH THE CONSTRUCTION AND OPERATION OF THE PRODUCT AND THE HAZARDS INVOLVED.
SUITABLE FOR WET LOCATIONS.
MIN 60°C SUPPLY CONDUCTORS.**

**CE PRODUIT DOIT ÊTRE INSTALLÉ SELON LE CODE D'INSTALLATION PERTINENT, PAR UNE PERSONNE QUI CONNAÎT BIEN LE PRODUIT ET SON FONCTIONNEMENT AINSI QUE LES RISQUES INHÉRENTS.
CONVIENT AUX EMPLACEMENTS MOUILLÉS.
LES FILS D'ALIMENTATION 60°C MIN.**