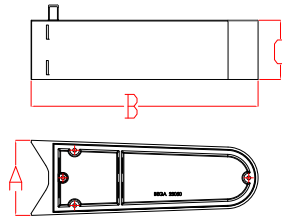


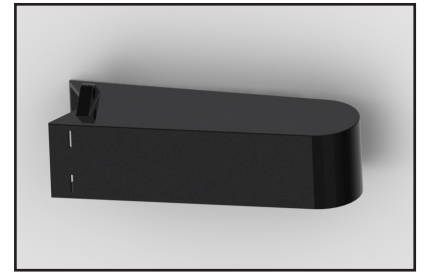
**Tools Required:**

3mm hex key  
6mm hex key  
Standard small screwdriver



**Dimensions**

A: 3-3/16 "  
B: 9-1/2 "  
C: 2-1/2 "



**Protection Class:** IP44

**EMS Accessory:**

**Material:** Outrigger arm made of alluminum alloy, mounting hardware made of stainless steel, motion sensor by others.

**Notice to the installer for EMS Accessory:**

1. See page 2 for specific product safety warnings.
2. For use with poletop luminaires.
3. If pole is supplied by BEGA, the pole will be supplied with threaded stainless steel inserts ready for installation.

**NOTE:** For poles not supplied by BEGA suitable threaded inserts are required for proper installation.

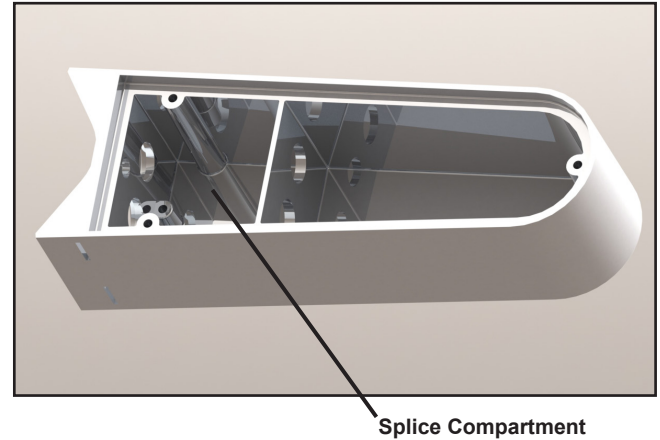
**EMS Accessory - installation:**

1. Lead supply wiring and fixture wiring through pole and into outrigger arm of EMS accessory.
2. Remove cover from EMS outrigger arm by unscrewing 3mm hex head screw.
3. Attach EMS outrigger arm to pole using the M8 x 35mm hex head mounting hardware (supplied by BEGA). See Figure 2 and Figure 3.
4. Make supply wiring, luminaire wiring, and motion sensor wiring connections in the EMS outrigger arm splice compartment (see Figure 1):

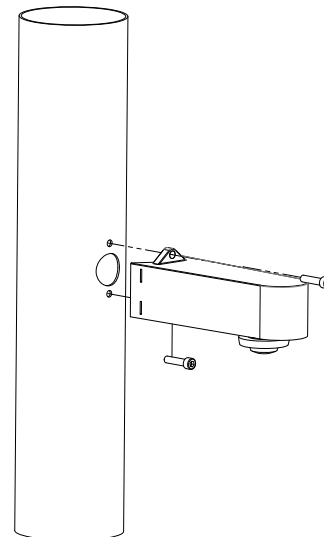
**NOTE:** Refer to Figure 4 for the EMS wiring diagram.

5. Replace splice compartment cover by tightening 3mm hex head screw.

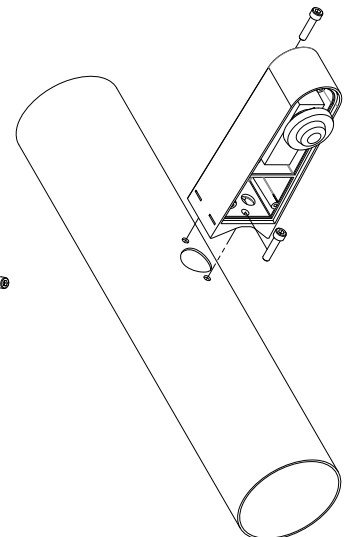
**Figure 1:**



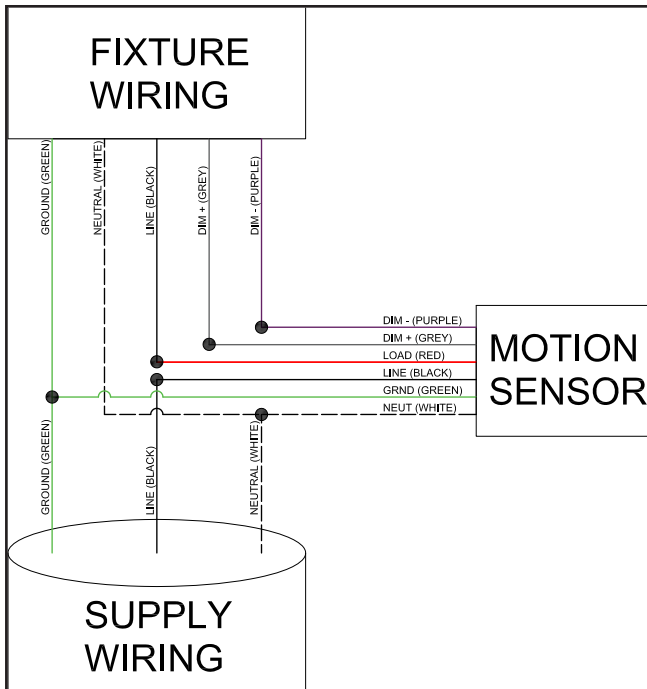
**Figure 2:**



**Figure 3:**



**Figure 4:**



## Product Safety Warnings:

**THIS PRODUCT MUST BE INSTALLED IN ACCORDANCE WITH THE APPLICABLE INSTALLATION CODE BY A PERSON FAMILIAR WITH THE CONSTRUCTION AND OPERATION OF THE PRODUCT AND THE HAZARDS INVOLVED. SUITABLE FOR WET LOCATIONS.**

**CE PRODUIT DOIT ÊTRE INSTALLÉ SELON LE CODE D'INSTALLATION PERTINENT, PAR UNE PERSONNE QUI CONNAÎT BIEN LE PRODUIT ET SON FONCTIONNEMENT AINSI QUE LES RISQUES INHÉRENTS. CONVIENT AUX EMPLACEMENTS MOUILLÉS.**

---